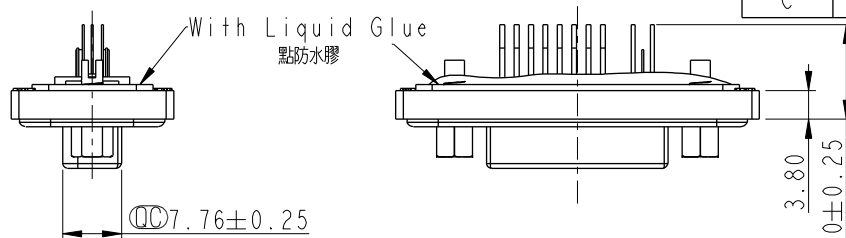
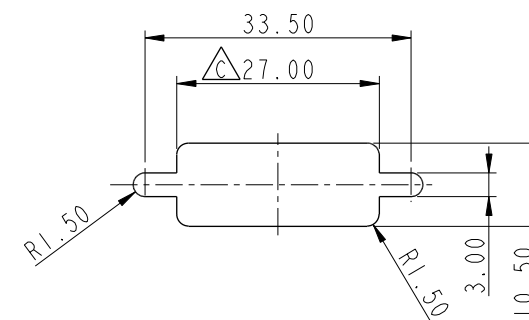


REV.	ECN NO.	DATE	SIGN	DESCRIPTION
A		2005/11/16	DAVID	Released Rev.A
B	LE3-710146	2006/12/13	Gao Ling	Move O-ring to ZSE00100842
C	LEN12C0092	2012/12/10	Ruru	Modify Dimension

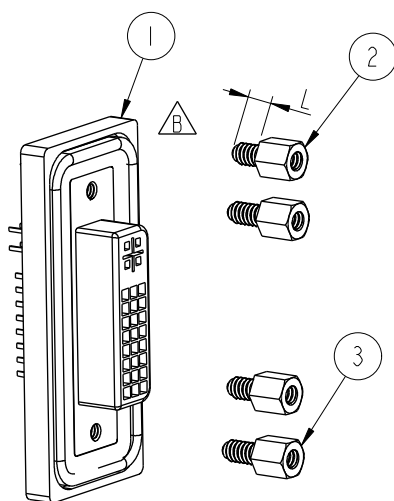
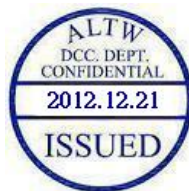
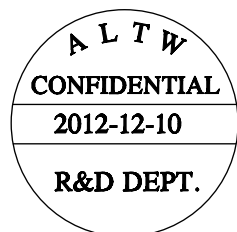


Screw L=5.0 For Panel Thickness
Under 1.2mm
適用板厚為1.2mm以下

Screw L=6.0 For Panel Thickness
Between 1.2~2.0mm
適用板厚為1.2~2.0mm



Recommended Panel Cut-Out
建議挖孔尺寸

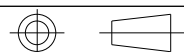


Note:

- * \varnothing Important Dimension.
- * Waterproof Rate : IP68
IP68:1M of depth of water 24 hours
(防水等級 : IP68)
(IP68:1 米水深 24 小時)
- * Do Mating Test After Glued
點膠後,須作對插測試
- * Add glue can't highly exceed pin
(點膠高度不得蓋過pin針)

- \triangle * DVI Conn. : Black Core , Nylon66
- \triangle * Plastic Jacket : Black , Nylon+GF
- \triangle * Pin : Copper Alloy , Gold Plated
- \triangle * Ring : Light Blue,Silicone
- \triangle * Screw : Copper Alloy,Nickel Plated,#4-40 UNC

UNIT:mm



TOLERANCE
.X ±0.25
.XX ±0.1
.XXX ±0.05
ANGLES ±1°

TITLE

Female DVI2S Connector(24+5)

SCALE 1:1

SIZE A4

SHEET 1 OF 1

REV. C

WC-REV. B.3

\varnothing Inspection item

Amphenol LTW
安費諾亮泰企業股份有限公司

ITEM NO

DID-29PFFS-SL8001

DWG NO

DID-29PFFS-SL8001

CUSTOMER

ALTW

DRAWN BY

Ruru

CHECKED BY

Rita

APPROVED BY

Maslow

DATE

2012-12-19

DATE

2012-12-19

DATE

2012-12-19

Mouser Electronics

Authorized Distributor

Click to View Pricing, Inventory, Delivery & Lifecycle Information:

[Amphenol:](#)

[LTWDID-29PFFS-SL8001](#) [DID-29PFFS-SL8001](#)