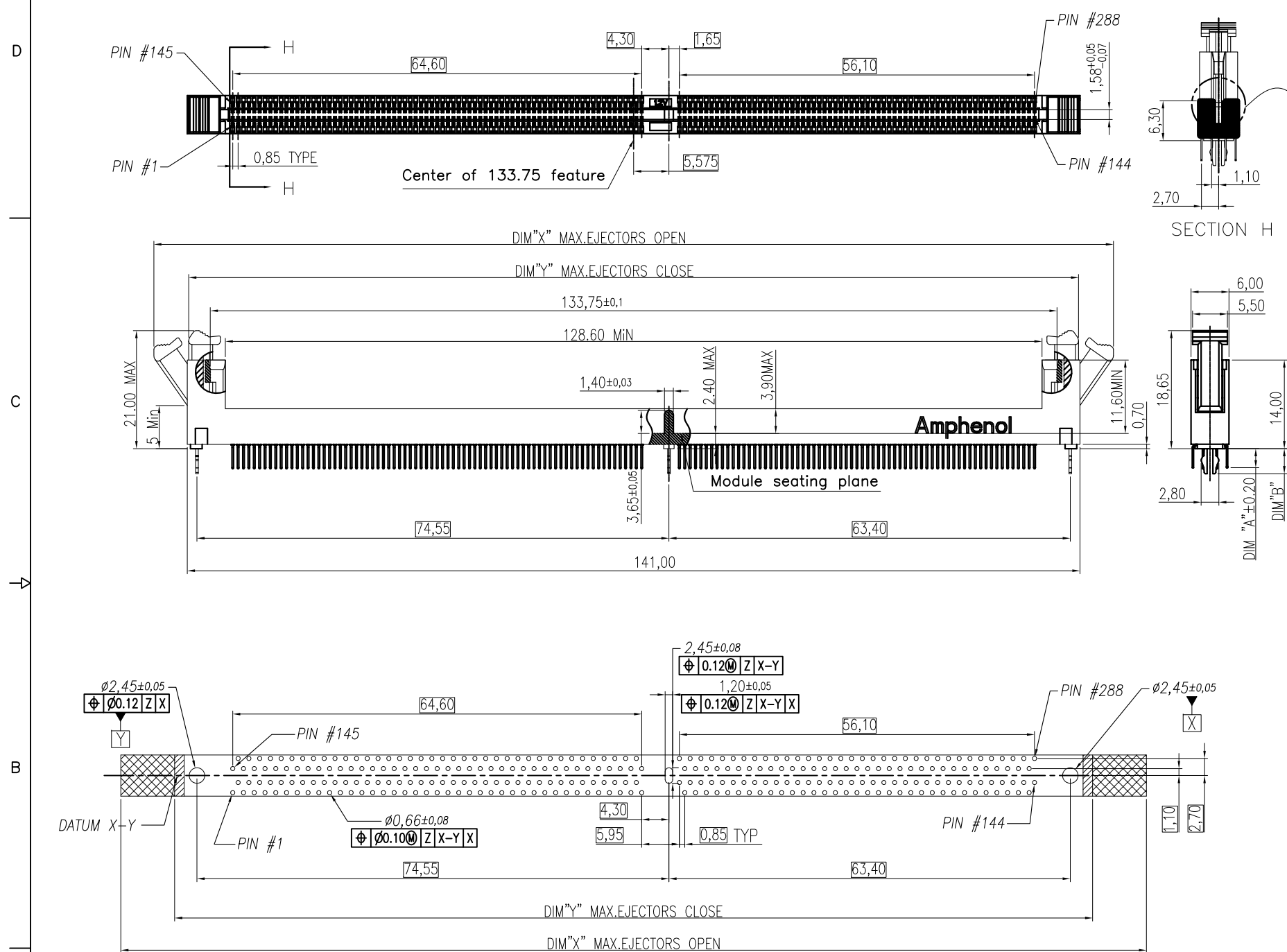


PRO/E GENERATED DRAWING,DO NOT CHANGE BY HAND

CUSTOMER DRAWING

REVISIONS

| SYM | ECN | DESCRIPTION | DATE | APPROVED |
|-----|------|---|----------|----------|
| 1 | HK-- | First Release | 12/16/13 | IP |
| 2 | HK-- | Added latch option and some dimensions,and modified the q'ty of packing | 08/21/14 | IP |
| 3 | HK-- | Added dimensions per customer's requirement | 08/26/14 | IP |
| 4 | HK-- | Added color options | 01/06/15 | IP |
| 5 | HK-- | Added a dimension and latch profile | 01/26/15 | IP |



SECTION H

NOTES:

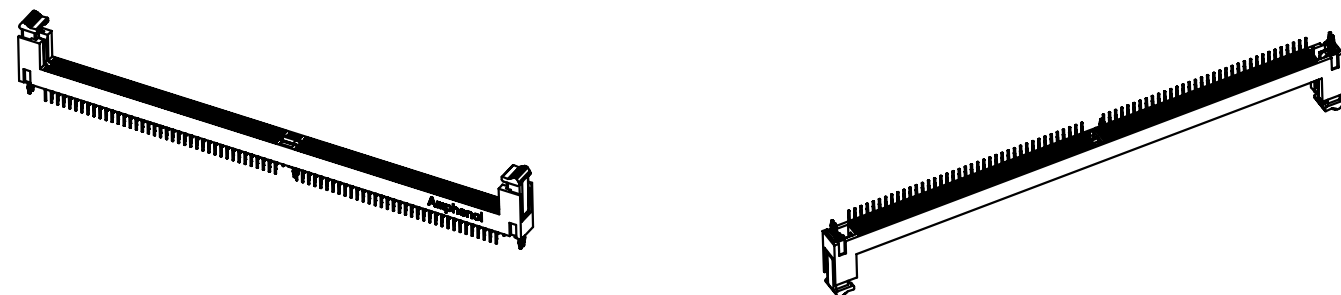
- MATERIAL:
HOUSING: HIGH TEMPERATURE THERMAL PLASTIC, OPTION, UL94V-0, COLOR:OPTION.
LATCH: HIGH TEMPERATURE THERMAL PLASTIC, OPTION, UL94V-0. COLOR: OPTION.
TERMINAL: COPPER ALLOY.
BOARDLOCK: COPPER ALLOY.
- FINISH:
TERMINAL:
CONTACT AREA: SELECTED GOLD PLATING;
SOLDERING AREA: MATTE TIN PLATING 100 μ THICKNESS MIN.;
UNDER PLATING: NICKEL PLATING 50 μ THICKNESS MIN. OVERALL.
BOARDLOCK:
NICKEL PLATING 80 μ THICKNESS MIN.;
- PACKING:PKS-ZDDR4-001, MPQ: 480pcs
- THIS PRODUCT IS HALOGEN-FREE COMPLIANT PRODUCT.
- Order p/n system:

DOUBLE DATA RATE 4 SERIES
NO. OF POSITIONS: 288 POS.
VERTICAL
SEQUENCE NUMBER:
{DIP OPTION (DIMA, DIMB, PCB)}
01: DIP=2.10MM, 3.94MM, 1.57 PCB
02: DIP=2.67MM, 3.94MM, 1.57 PCB
03: DIP=2.95MM, 4.60MM, 2.36 PCB
04: DIP=3.18MM, 4.60MM, 2.36 PCB
HOUSING/LATCH COLOR
1: NYLON, BLACK/ NYLON, BLACK
2: NYLON, BLACK/ NYLON, NATURAL(IVORY)
3: NYLON, NATURAL(IVORY)/ NYLON, BLACK
4: NYLON, NATURAL(IVORY)/ NYLON, NATURAL(IVORY)
5: NYLON, BLUE/ NYLON, NATURAL(IVORY)
6: NYLON, GREEN/ NYLON, NATURAL(IVORY)
7: NYLON, BLUE/ NYLON, BLUE
8: NYLON,YELLOW/NYLON,NATURAL(IVORY)

| | |
|----------------------------------|--|
| LATCH PROFILE | |
| NIL: DIM"X"=152MAX;DIM"Y"=142MAX | |
| F: DIM"X"=162MAX;DIM"Y"=145MAX | |

LATCH OPTION/REMARK:
NIL: DIM"X"=152MAX;DIM"Y"=142MAX
F: DIM"X"=162MAX;DIM"Y"=145MAX
PACKAGE CODE:
T: TRAY
CONTACT PLATED
0: GOLD FLASH
1: 15 μ GOLD
2: 20 μ GOLD
3: 30 μ GOLD
4: 3 μ GOLD OVER 12 μ PdNi
5: 3 μ GOLD OVER 27 μ PdNi

RECOMMENDED PCB LAYOUT (TOP VIEW)



| PART NO. | DIM."A" | DIM."B" | PCB THK |
|----------------|---------|---------|---------|
| DDR4288V01XXTX | 2.10 | 3.94 | 1.57 |
| DDR4288V02XXTX | 2.67 | 3.94 | 1.57 |
| DDR4288V03XXTX | 2.95 | 4.60 | 2.36 |
| DDR4288V04XXTX | 3.18 | 4.60 | 2.36 |

| | | | |
|---------------------------------------|--------|---------------------|-------------------|
| UNLESS OTHERWISE SPECIFIED TOLERANCES | | APPROVAL | DATE |
| U.S. | METRIC | DRAWN | Acon.Dal 01/26/15 |
| 0.0 | +/- | CHECKED | Dam.he 01/26/15 |
| 0.00 | +/- | CHECKED | |
| 0.000 | +/- | | |
| FRACTIONS +/- | | | |
| ANGLES +/- | 1° | | |
| FOR MATERIALS AND FINISHES SEE NOTES | | DRAWING FILE : | |
| REMOVE SHARP EDGES | | ANGLE OF PROJECTION | |
| DIMENSIONS | | | |
| U.S. | INCHES | | |
| (METRIC) | (MM) | | |

Amphenol

Amphenol East Asia Limited

TITLE Customer drawing For DDR4 Series, 288 pos.,0.85 pitch Vertical Dip Type

| | | |
|-------|-----------------------|--------------|
| SIZE | DRAWING NO. | REV. |
| A3 | DDR4-288-V-XX-X-X-T-X | 5 |
| SCALE | N/A | SHEET 1 OF 3 |

This document is the property of Amphenol Corporation and is delivered on the express condition that it is not to be disclosed, reproduced or used, in whole or in part, for manufacture or sale by anyone other than Amphenol Corporation without its prior consent, & that no right is granted to disclose or to use any information in this document.

PRO/E GENERATED DRAWING,DO NOT CHANGE BY HAND

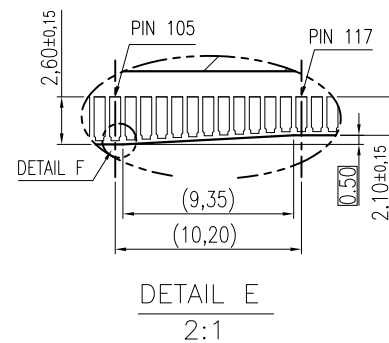
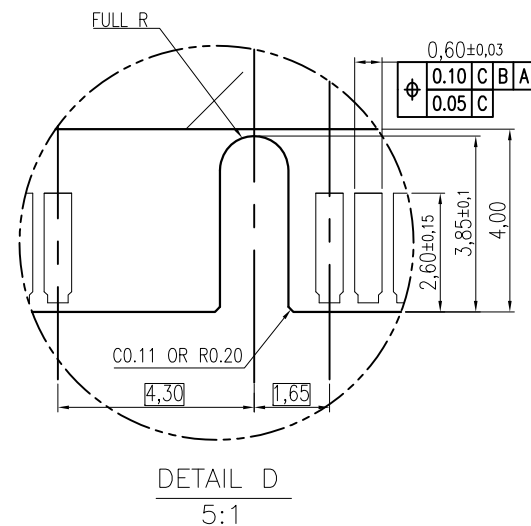
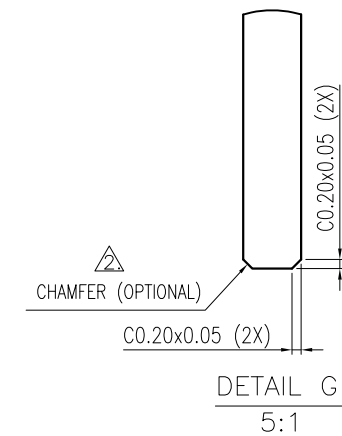
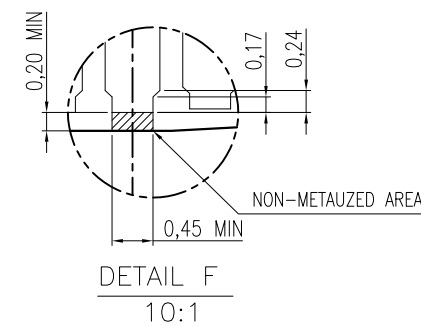
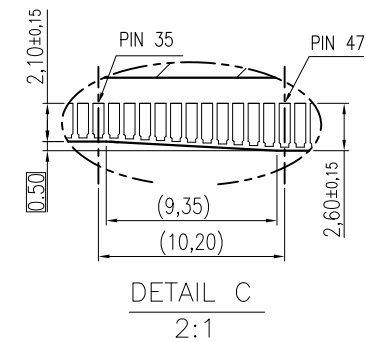
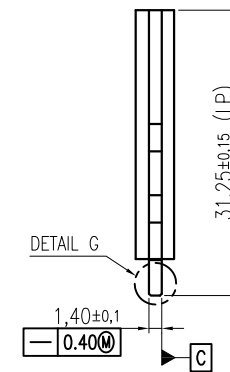
CUSTOMER DRAWING

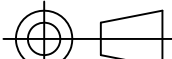

REVISIONS

| SYM | ECN | DESCRIPTION | DATE | APPROVED |
|-------------|-----|-------------|------|----------|
| SEE SHEET 1 | | | | |

NOTES:

- RECOMMENDED PLATING FOR CONTACT PADS:
PREFERRED: 0.76 MICROMETERS GOLD PLATING MIN.
OVER 2.00 MICROMETERS NICKEL.
ALTERNATIVE: 0.05~0.75 MICROMETERS GOLD PLATING
OVER 2.00 MICROMETERS NICKEL MUST USE AN ELECTRONIC
CONTACT GRADE CORROSIVE BARRIER LUBRICANT.
△ CHAMFER IS OPTIONAL AND IS NOT TO HIT GOLD PADS.



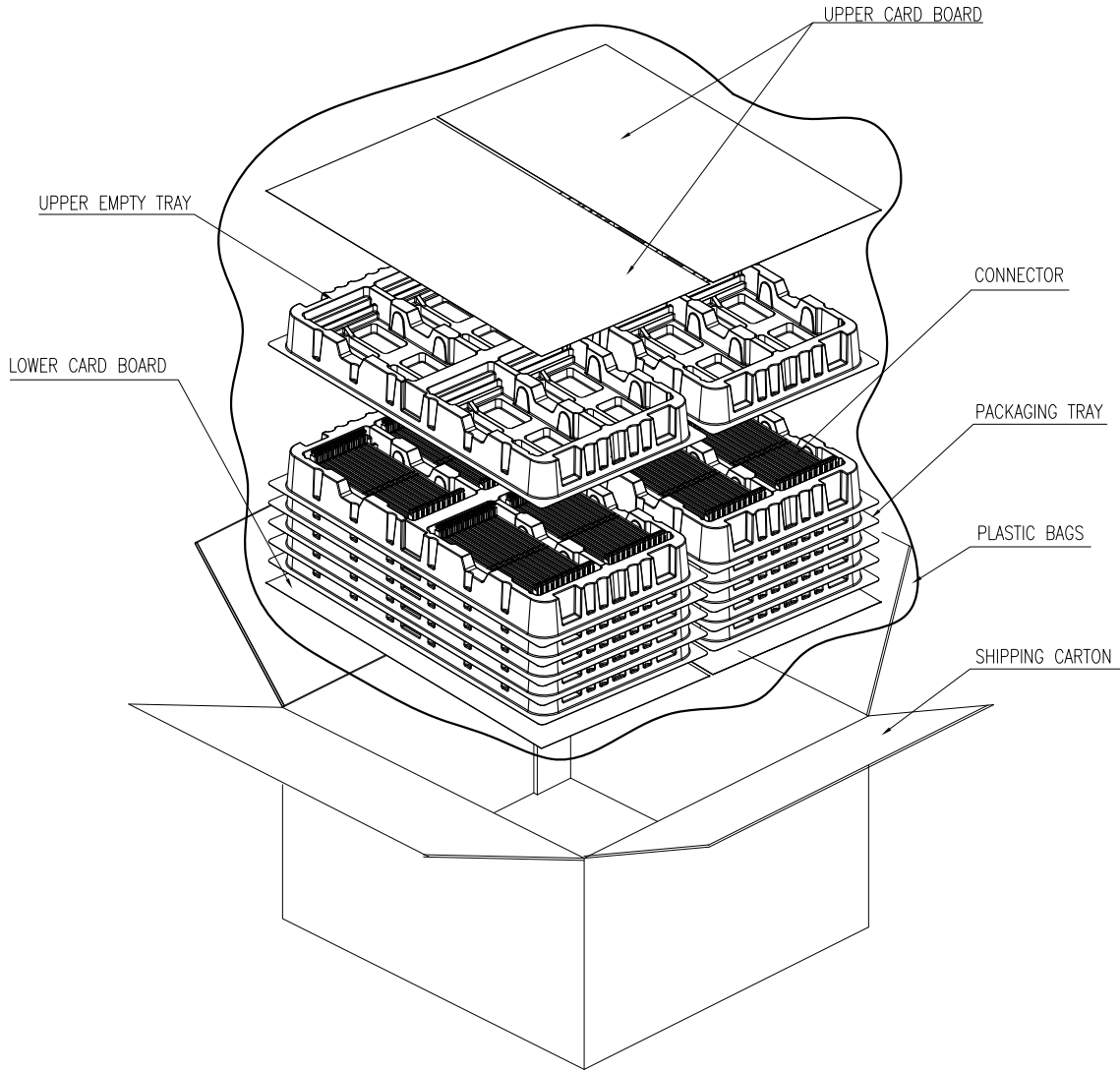
| | | | | | | | |
|---|--|---|----------|--------------------------|--|--|--|
| UNLESS OTHERWISE SPECIFIED TOLERANCES | | APPROVAL | | DATE | | Amphenol Amphenol East Asia Limited | |
| U.S. METRIC | | DRAWN | Acon.Dal | 01/26/15 | | | |
| 0.0 +/- 0.30 | | CHECKED | Dam.he | 01/26/15 | | TITLE Customer drawing For DDR4 Series, 288 pos.,0.85 pitch Vertical Dip Type | |
| 0.00 +/- 0.20 | | CHECKED | | | | | |
| 0.000 +/- 0.10 | | | | | | | |
| FRACTIONS +/- 1" | | DRAWING FILE : | | | | | |
| ANGLES +/- | | \DRAWING\DDR4\DDR4288V000TX-5 | | | | | |
| FOR MATERIALS AND FINISHES SEE NOTES | | ANGLE OF PROJECTION | | | | | |
| REMOVE SHARP EDGES | |  | | | | | |
| DIMENSIONS | | | | SIZE DRAWING NO. | | REV. | |
|  | | | | A3 DDR4-288-V-XX-X-X-T-X | | 5 | |
| U.S. INCHES | | | | SCALE N/A | | SHEET 2 OF 3 | |
| (METRIC) (MM) | | | | | | | |

This document is the property of Amphenol Corporation and is delivered on the express condition that it is not to be disclosed, reproduced or used, in whole or in part, for manufacture or sale by anyone other than Amphenol Corporation without its prior consent, & that no right is granted to disclose or to use any information in this document.

CUSTOMER DRAWING

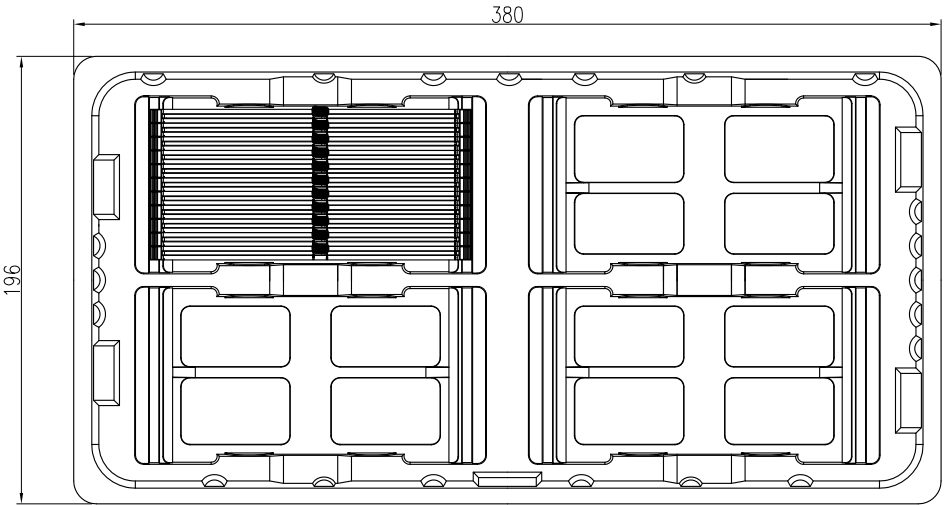
| REVISIONS | | | | |
|-------------|-----|-------------|------|----------|
| SYM | ECN | DESCRIPTION | DATE | APPROVED |
| SEE SHEET 1 | | | | |

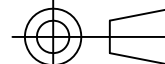

PRO/E GENERATED DRAWING,DO NOT CHANGE BY HAND



NOTES:
1. IN THE 14 PLASTIC TRAYS ,THE TWO TOP PLASTIC TRAYS ARE TO COVER THE CONNECTORS ,THE OTHERS ARE FILLED WITH CONNECTORS.

| TOTEL TRAY PER CARTON | QT*Y/TRAY | QT*Y/SHIPPING CARTON | PLASTIC BAGS QT*Y /SHIPPING CARTON | G.W. | N.W. |
|-----------------------|-----------|----------------------|------------------------------------|---------|---------|
| 14 | 40 | 480 | 1 | 5.2 KGf | 3.2 KGf |



| | | | | | | | | |
|---|-----|------|---|----------|----------|---|--|-----------------------|
| UNLESS OTHERWISE SPECIFIED TOLERANCES U.S. METRIC | | | APPROVAL | | DATE | Amphenol Amphenol East Asia Limited | | |
| | | | DRAWN | Acon.Dal | 01/26/15 | | | |
| 0.0 | +/- | 0.30 | CHECKED | Dem.he | 01/26/15 | TITLE Customer drawing For DDR4 Series, 288 pos.,0.85 pitch Vertical Dip Type | | |
| 0.00 | +/- | 0.20 | CHECKED | | | | | |
| 0.000 | +/- | 0.10 | DRAWING FILE : \\DRAWING\DDR4\DDR4288V\000TX-S | | | SIZE A3 | | |
| FRACTIONS +/- | | | | | | | | |
| ANGLES +/- | 1" | | ANGLE OF PROJECTION | | | DRAWING NO. | | REV. |
| FOR MATERIALS AND FINISHES SEE NOTES | | | | | | A3 | | DDR4-288-V-XX-X-X-T-X |
| REMOVE SHARP EDGES | | |  | | | SCALE | | N/A |
| DIMENSIONS | | | | | | SHEET 3 OF 3 | | |
|  | | | | | | | | |
| (METRIC) | | (MM) | | | | | | |
| | | | | | | | | |
| | | | | | | | | |

Mouser Electronics

Authorized Distributor

Click to View Pricing, Inventory, Delivery & Lifecycle Information:

Amphenol:

[DDR4288V0113T](#) [DDR4288V0121T](#) [DDR4288V0411T](#) [DDR4288V0413T](#) [DDR4288V0421T](#) [DDR4288V0423T](#)

FCI / Amphenol:

[DDR4288A0111TF](#) [DDR4288A0141TF](#)