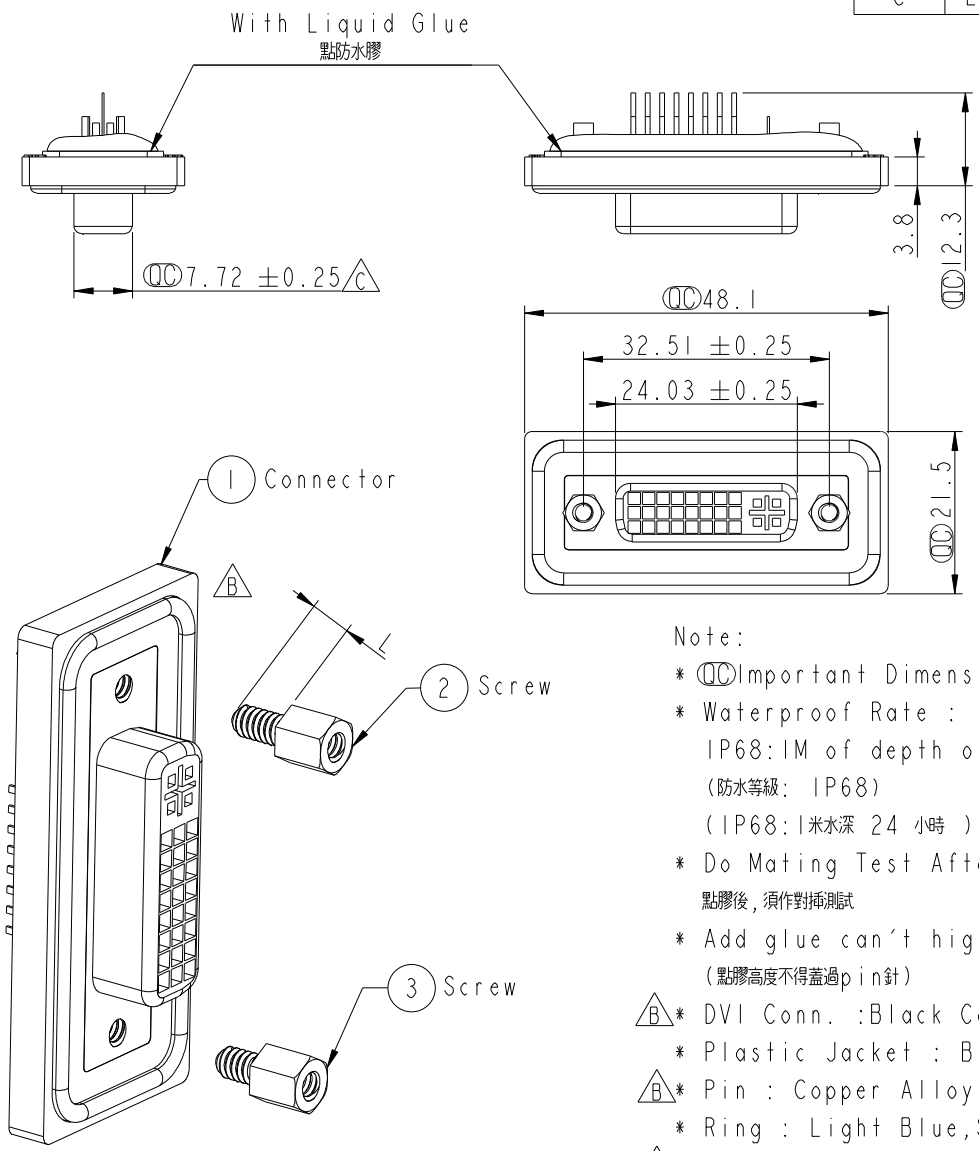


THIS DOCUMENT IS SUBJECT TO CHANGE WITHOUT NOTICE. IT IS CONFIDENTIAL AND A PROPERTY OF Amphenol LTW. DISCLOSURE TO THIRD PARTY HAS TO BE AUTHORIZED BY Amphenol LTW.

| REV. | ECN NO. | DATE | SIGN | DESCRIPTION |
|------|------------|------------|----------|----------------------------|
| B | LE3-710144 | 2006/12/13 | Gao Ling | Move O-ring to ZSE00100840 |
| C | LEN1380073 | 2013/08/02 | Sam | Modify Dimension |



ALTW
CONFIDENTIAL
2013-08-02
R&D DEPT.

ALTW
DCC. DEPT.
CONFIDENTIAL
2013.08.12
ISSUED

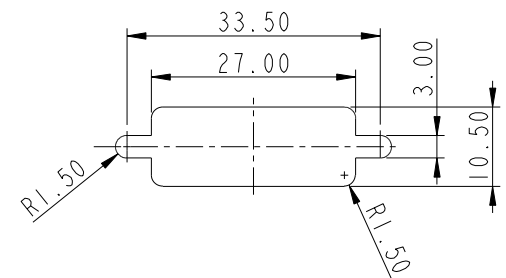
- Note:
- * \varnothing Important Dimension.
 - * Waterproof Rate : IP68
IP68: 1M of depth of water 24 hours
(防水等級: IP68)
(IP68: 1米水深 24 小時)
 - * Do Mating Test After Glued
點膠後, 須作對插測試
 - * Add glue can't highly exceed pin
(點膠高度不得蓋過 pin 針)
 - △ * DVI Conn. : Black Core , Nylon66
 - * Plastic Jacket : Black , Nylon+GF
 - △ * Pin : Copper Alloy , Gold Plated
 - * Ring : Light Blue, Silicone
 - △ * Screw : Copper Alloy, Nickel Plated, #4-40 UNC



Panel Thickness
面板厚度

Screw L=5.0 For Panel Thickness
Under 1.2mm
適用板厚為 1.2mm 以下

Screw L=6.0 For Panel Thickness
Between 1.2~2.0mm
適用板厚為 1.2~2.0mm



Recommended Panel Cut-Out
建議挖孔尺寸

| | | | |
|--|-------------------------------|--------------|-------------------------------------|
| UNIT: mm | | | TITLE Female DVI Connector(24+1) |
| TOLERANCE .X .XX .XXX ANGLES | ±0.25 ±0.1 ±0.05 ±1° | SCALE 1:1 | SIZE A4 |
| REV. C | WC-REV. A.6 | SHEET 1 | OF 1 |
| QC: Inspection item | | | |

Amphenol LTW
安費諾亮泰企業股份有限公司

| | | |
|------------------------------|-----------------------|--------------------|
| ITEM NO DDD-25PFFS-SL8001 | DRAWN BY SamChang | DATE 2013-08-02 |
| DWG NO DDD-25PFFS-SL8001 | CHECKED BY Rita | DATE 2013-08-02 |
| CUSTOMER ALTW | APPROVED BY Maslow | DATE 2013-08-02 |

Mouser Electronics

Authorized Distributor

Click to View Pricing, Inventory, Delivery & Lifecycle Information:

[Amphenol:](#)

[DDD-25PFFS-SL8001](#)