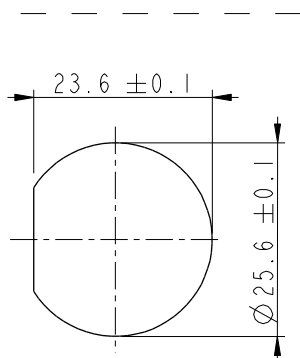
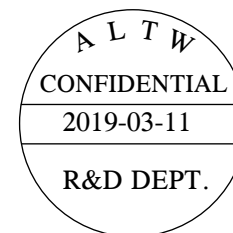
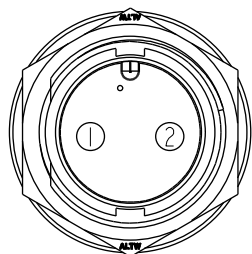


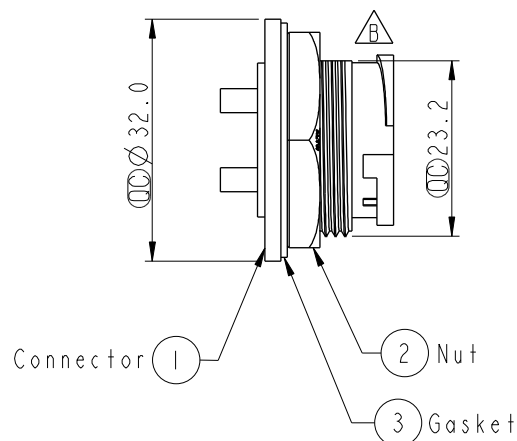
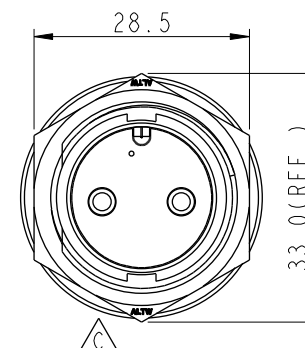
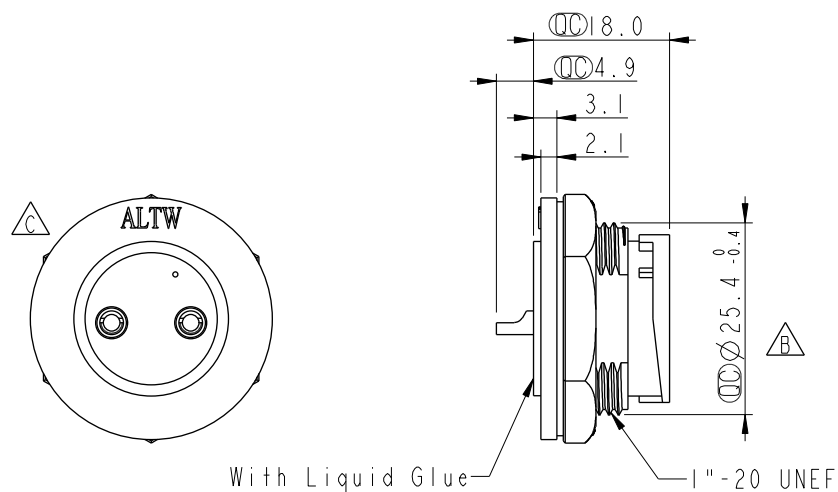
REV.	ECN NO.	DATE	SIGN	DESCRIPTION
B	LEN-8A0178	2008/09/15	Shin	Add Notes
C	LE3I630269	2016/03/15	Vicky	Update Logo
D	CI90310	2019/03/11	Ruru	Modify Note



Recommended  
Panel Cut-Out



Pin Assignments  
Front View



Note:

- \* Important Dimension
- \* Waterproof Rate: IP67, Unmated
- \* Housing: Thermoplastic, Black
- \* Pin: Copper Alloy, Gold Plated
- \* Nut: Thermoplastic, Black
- \* Gasket: Rubber, Black
- \* Use Waterproof Cap or Dust Cap  
Panel Thickness Max: 3.0mm
- \* Use without Waterproof Cap or Dust Cap  
Panel Thickness Max: 4.0mm
- \* Gasket and Nut are packed separately in PE bags.

UNIT:mm	
TOLERANCE	
.X	±0.25
.XX	±0.1
.XXX	±0.05
ANGLES	±1°

TITLE Lock Type Connector For Panel Mount 2Pin Male Connector Male Pin(20A)			
SCALE 1:1	SIZE A4	SHEET 1 OF 1	
REV. D	WC-REV. A.3	Inspection item	

**Amphenol LTW**  
安費諾亮泰企業股份有限公司

ITEM NO DC-02PMMS-LC7001	DRAWN BY Ruru	DATE 2019-03-11
DWG NO DC-02PMMS-LC7001	CHECKED BY Rita	DATE 2019-03-11
CUSTOMER ALTW	APPROVED BY Max	DATE 2019-03-11

# Mouser Electronics

Authorized Distributor

Click to View Pricing, Inventory, Delivery & Lifecycle Information:

[Amphenol:](#)

[1DC-02PMMS-LC7001](#) [DC-02PMMS-LC7001](#)