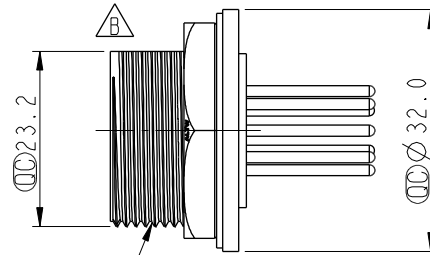
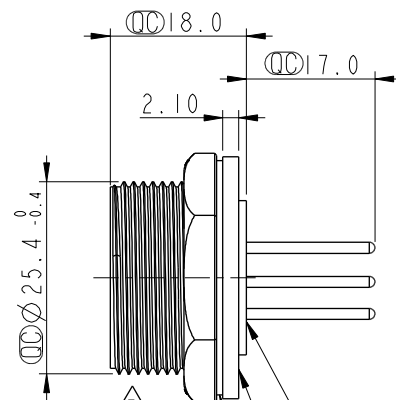
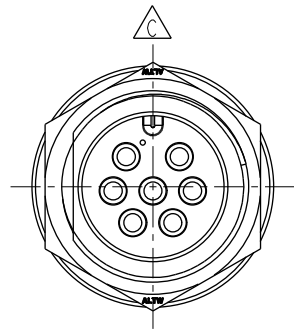


Pin Assignments
Front View



1"-20 UNEF

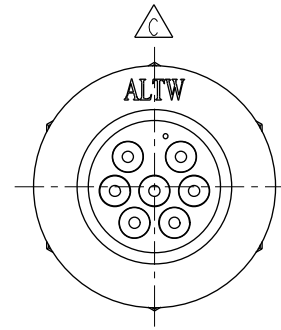


With Liquid Glue

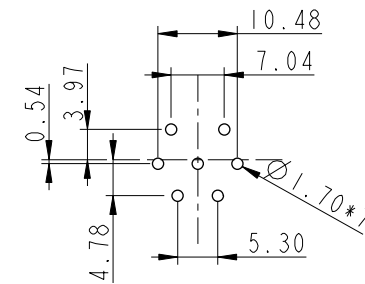
Nut (2)

(1) Connector

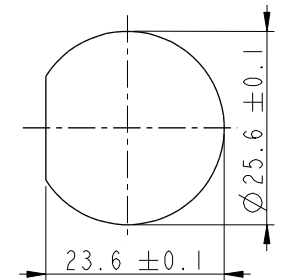
(3) Gasket



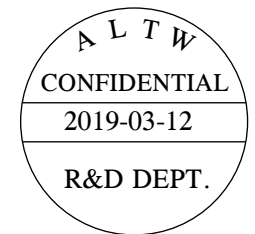
REV.	ECN NO.	DATE	SIGN	DESCRIPTION
C	LEN1730332	2017/03/22	Vicky	Update Logo
D	LEN1840064	2018/04/13	Ethan	Modify Panel Thickness
E	CI90314	2019/03/12	Ruru	Modify Note




7Pin Male Connector
Male Pin PCB Layout
7Pin 公接頭
PCB挖孔位置尺寸圖







Recommended
Panel Cut-Out

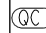


Note: 

- *  Important Dimension
- * Waterproof Rate: IP67, Unmated
- * Housing: Thermoplastic, Black
- * Pin: Copper Alloy, Gold Plated
- * Nut: Thermoplastic, Black
- * Gasket: Rubber, Black

-  * Use Waterproof Cap or Dust Cap
Panel Thickness Max: 1.8mm
-  * Use without Waterproof Cap or Dust Cap
Panel Thickness Max: 3.0mm
- * Gasket and Nut are packed separately
in PE bags.

UNIT:mm		
TOLERANCE	.X ±0.25	
.XX	±0.1	
.XXX	±0.05	
ANGLES	±1°	

TITLE Screw Type Connector For Panel Mount 7Pin Male Connector Male Pin(20A)			
SCALE 1:1	SIZE A4	SHEET 1 OF 1	
REV. E	WC-REV. A.3	 :Inspection item	

Amphenol LTW
安費諾亮泰企業股份有限公司

ITEM NO DC-07PMMP-SC7001	DRAWN BY Ruru	DATE 2019-03-12
DWG NO DC-07PMMP-SC7001	CHECKED BY Rita	DATE 2019-03-12
CUSTOMER ALTW	APPROVED BY Max	DATE 2019-03-12

Mouser Electronics

Authorized Distributor

Click to View Pricing, Inventory, Delivery & Lifecycle Information:

[Amphenol:](#)

[DC-07PMMP-SC7001](#)