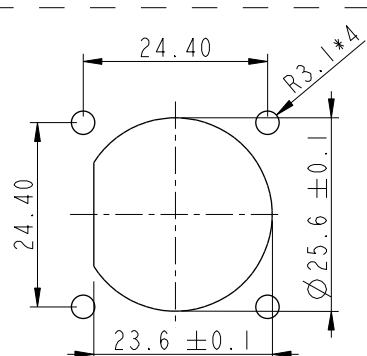
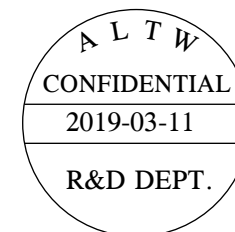
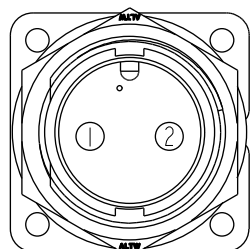


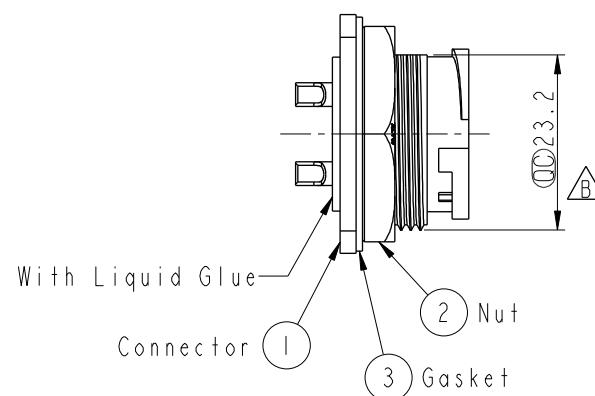
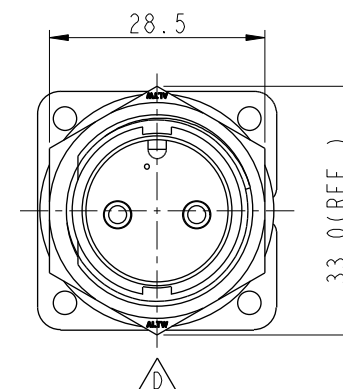
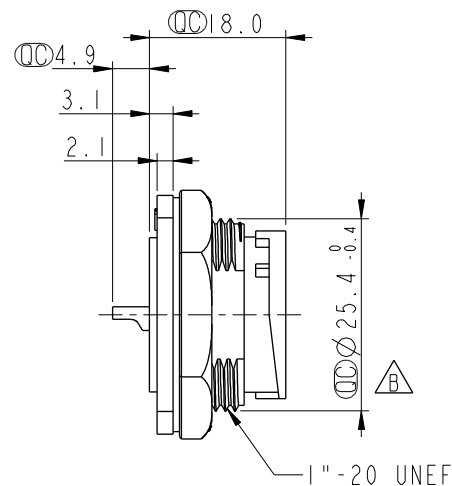
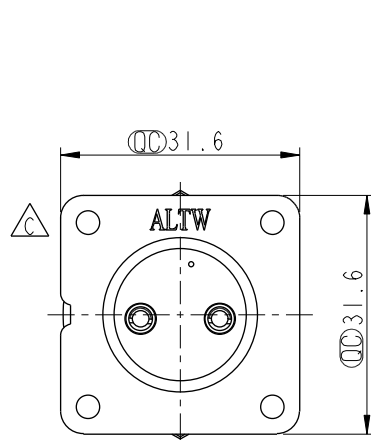
REV.	ECN NO.	DATE	SIGN	DESCRIPTION
C	LEN15A0330	2015/06/04	Jinhai	Change Logo
D	LEN1740957	2017/04/11	Vicky	Update Logo
E	CI90310	2019/03/11	Ruru	Modify Note



Recommended
Panel Cut-Out



Pin Assignments
Front View



Note:

- * Important Dimension
- * Waterproof Rate: IP67, Unmated
- * Housing: Thermoplastic, Black
- * Pin: Copper Alloy, Gold Plated
- * Nut: Thermoplastic, Black
- * Gasket: Rubber, Black
- * Use Waterproof Cap or Dust Cap
Panel Thickness Max: 3.0mm
- * Use without Waterproof Cap or Dust Cap
Panel Thickness Max: 4.0mm
- * Gasket and Nut are packed separately
in PE bags.

UNIT:mm		TITLE Large Panel Lock 2Pin M Conn M Pin			ITEM NO DC-02PMMS-LS7001		DRAWN BY Ruru		DATE 2019-03-11	
TOLERANCE .X ±0.25 .XX ±0.1 .XXX ±0.05 ANGLES ±1°		SCALE 1:1	SIZE A4	SHEET 1 OF 1	DWG NO DC-02PMMS-LS7001		CHECKED BY Rita		DATE 2019-03-11	
REV. E		WC-REV. A.4	Inspection item		CUSTOMER ALTW		APPROVED BY Max		DATE 2019-03-11	

Amphenol LTW
安費諾亮泰企業股份有限公司

Mouser Electronics

Authorized Distributor

Click to View Pricing, Inventory, Delivery & Lifecycle Information:

[Amphenol:](#)

[1DC-02PMMS-LS7001](#)