

4

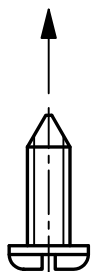
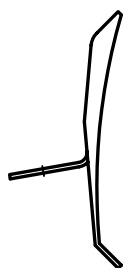
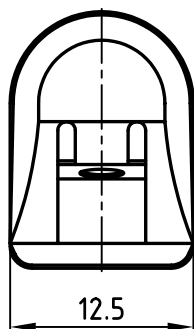
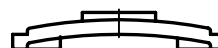
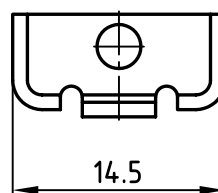
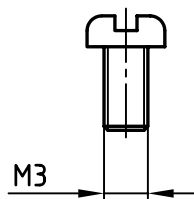
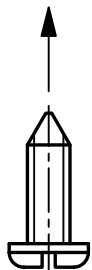
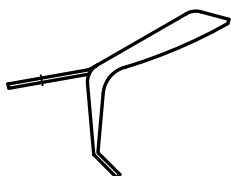
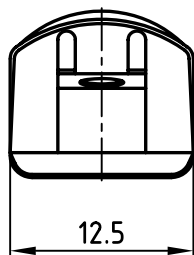
3

2

1

used for:

D-SUB



1 SET CONSISTS OF:
 2 LOCKING-LEVERS
 2 SELF-TAPPING SCREWS
 2 SCREEN HOOKS
 2 SCREWS M3
 2 SPRING RINGS
 2 NUTS M3

APPROVAL * FREIGABE * DEBLOCAGE * AUTORIZACION * APPROVAL

CUSTOMER APPROVAL DATE:

NAME:

TITLE:

COMPANY NAME:

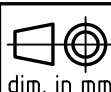
APPROVAL * FREIGABE * DEBLOCAGE * AUTORIZACION * APPROVAL

THIS DRAWING MAY NOT BE COPIED OR
 REPRODUCED IN ANY WAY, AND MAY NOT
 BE PASSED ON TO A THIRD PARTY WITHOUT
 WRITTEN PERMISSION.
 OWNERSHIP AND COPYRIGHT OF CONEC GmbH

DO NOT ALTER CAD DRAWING BY HAND

rev.	description	date	name

tolerance



dim. in mm

2005	date	name
drawn	04.08.	Lehmenkühler
appd.	04.08.	Mickenbecker
norm		
d-old		

scale:

2:1

material:

title:

SNAP LOCKING
 FOR SIDE CABLE EXIT
 9-37pos.

dwg no:

AutoCAD 2004

DIN-A

16K1A1476

4

sh: 1/1

part no:

160X10609X

4

3

2

1

Mouser Electronics

Authorized Distributor

Click to View Pricing, Inventory, Delivery & Lifecycle Information:

[Amphenol:](#)

[160X10609X](#)