

1. MATERIALS AND FINISHES:
BODY - BeCu, GOLD PLATING
CONTACT - BeCu, GOLD PLATING
INSULATOR - LCP EI30i

A. IMPEDANCE: 50 OHM
B. FREQUENCY RANGE: DC - 20 GHz
C. VSWR(RETURN LOSS): 1.10 MAX. (-26 dB MIN.) DC - 8 GHz
1.22 MAX. (-20 dB MIN.) 8 - 20 GHz
CONNECTOR ONLY, PERFORMANCE WILL VARY BASED ON
BOARD LAYOUT

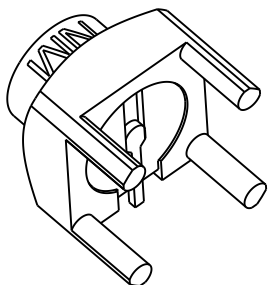
3. PHYSICAL:

A. DURABILITY: 1000 CYCLES MIN.
B. ENGAGEMENT FORCE: 2 LB (9 N) MAX
C. DISENGAGEMENT FORCE: 0.5 LB (2.2 N) MIN
D. INNER CONTACT RETENTION FORCE: 1.5 LB (7 N) MIN
E. TEMPERATURE RANGE: -65° C TO +165° C

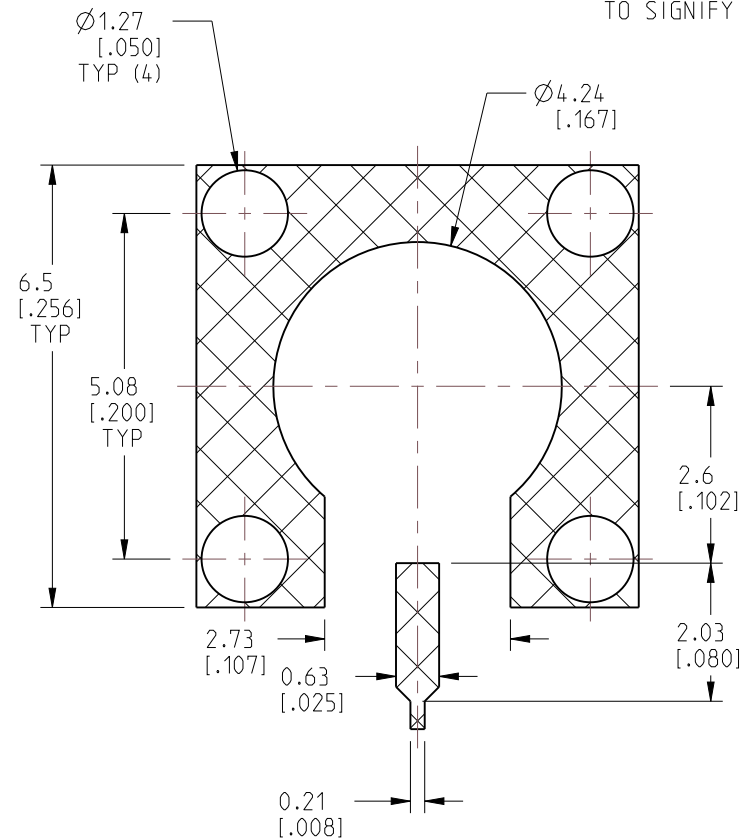
4. PACKAGING:

A. QUANTITY: 50 PCS TRAY
B. MARK BAG OR TAG:
"AMPHENOL REF. SMP-MSSB-PCT-NM. DATE CODE"

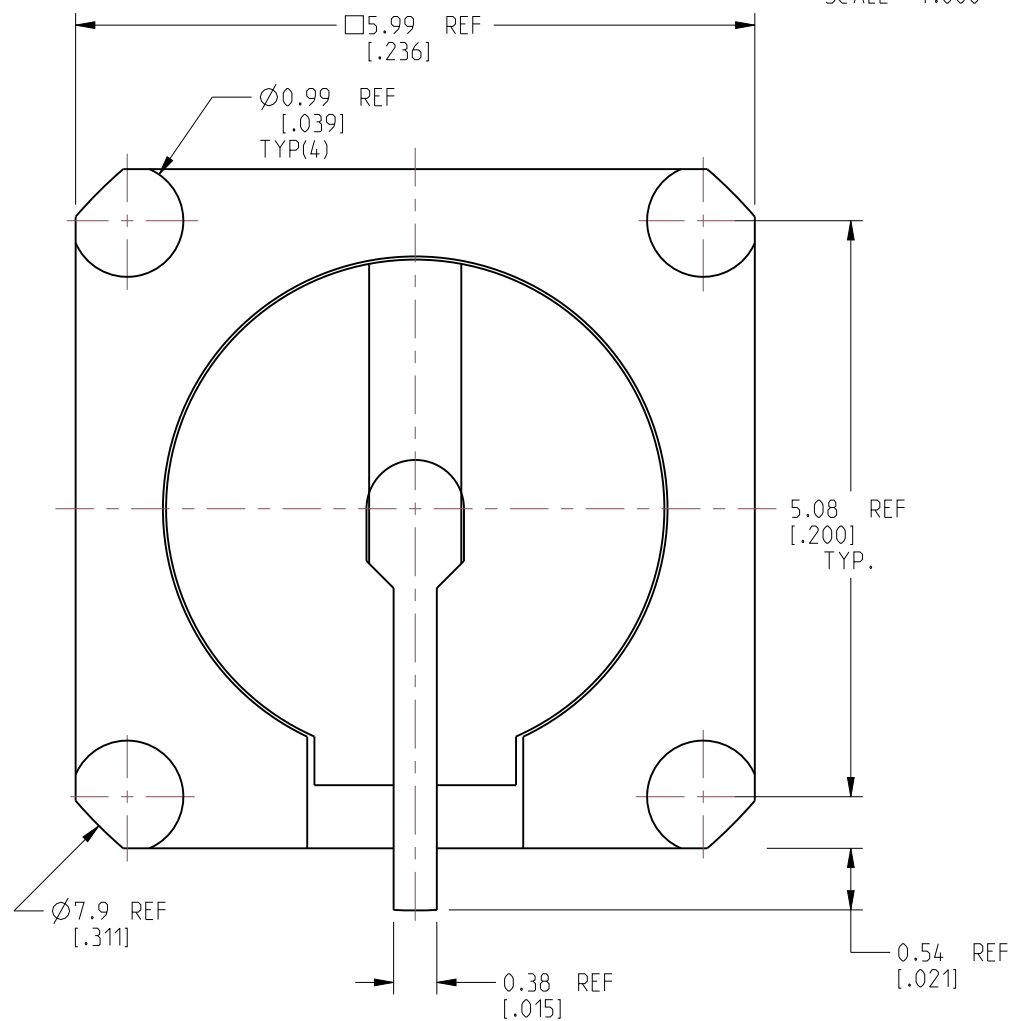
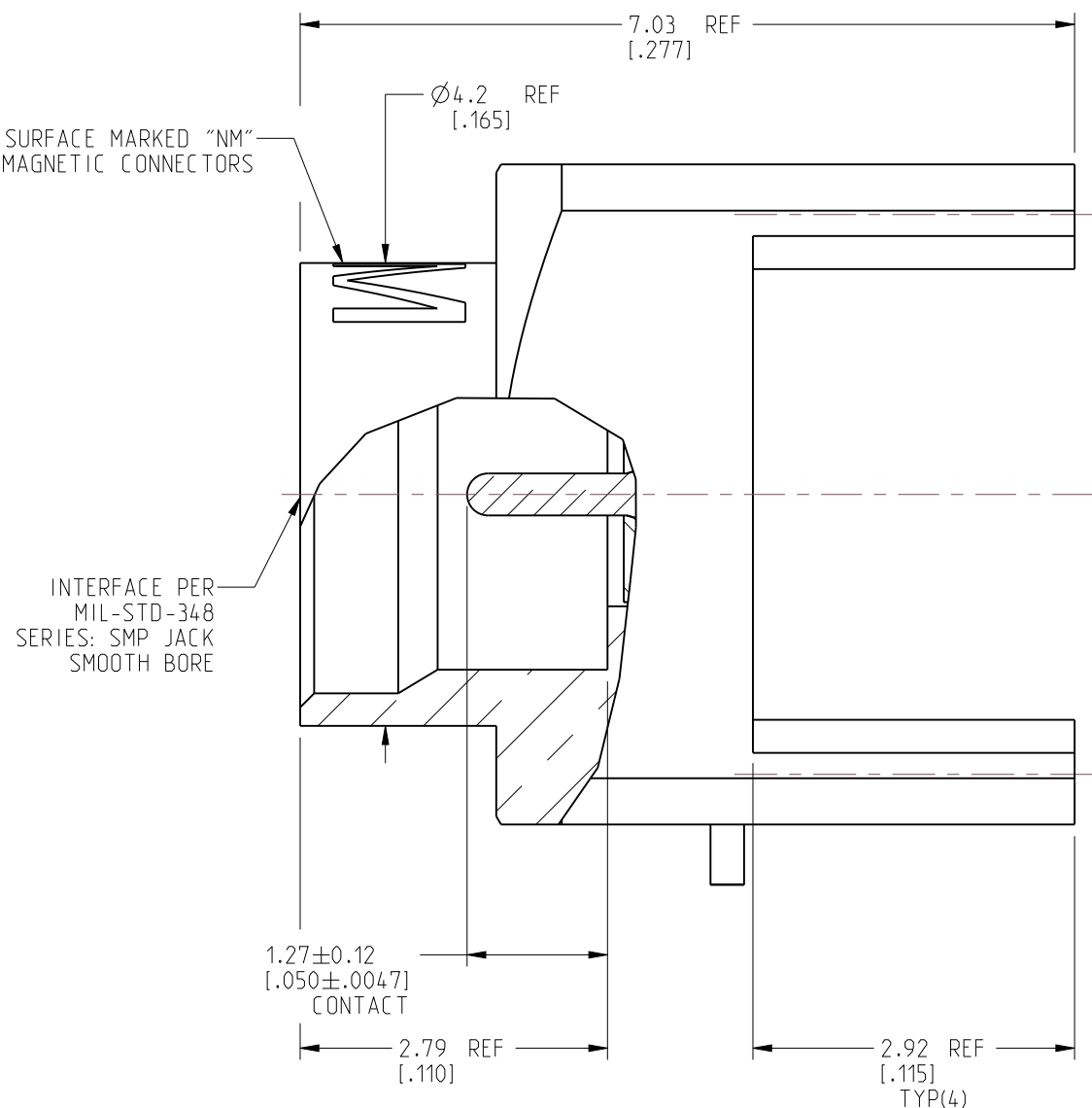
REVISIONS				
REV	DESCRIPTION	DATE	ECN	BY
A	RELEASE TO MFG.	18-Nov-22	16309	SH



SCALE 4.000



RECOMMENDED PCB PAD LAYOUT



CUSTOMER OUTLINE DRAWING

ALL OTHER SHEETS ARE FOR INTERNAL USE ONLY

NOTICE: These drawings, specifications, or other data (1) are, and remain the property of Amphenol corp. (2) must be returned upon request; and (3) are confidential and not to be disclosed to any person other than those to whom they are given by Amphenol Corp. The furnishing of these drawings, specifications, or other data by Amphenol Corp., or to any other person to anyone for any purpose is not to be regarded by implication or otherwise in any manner licensing, granting rights to permitting such holder or any other person to manufacture, use or sell any product, process or design, patented or otherwise, that may in any way be related to or disclosed by said drawings, specifications, or other data.

<0.5mm = ±0.05mm	[<0.020 = ±0.002]
0.5 - 6mm = ±0.1mm	[>0.020 - 0.236 = ±0.004]
>6.00 - 30mm = ±0.2mm	[>0.236 - 1.181 = ±0.008]
>30.00 - 120mm = ±0.3mm	[>1.181 - 4.725 = ±0.012]

ANGLES = $\pm 1^\circ$

SEE NOTES

ENGR.1
S.V0

ENGR.2
L.QIN

DATE	21-OCT-20
------	-----------

SMP JACK, PIN CONTACT
PCB RECEPTACLE
SMOOTH BORE
NON-MAGNETIC

SHEET NO. 2 OF 2

SCALE: 15.0:1.0

Amphenol RF

SIZE	DRAWING NO. SMP-MSSB-PC T-NM
------	------------------------------

ITEM NO. SMP-MSSB-PRT-NM

B	PART NO. SMP-MSSB-PC T-NM
---	---------------------------

RFV

A

Mouser Electronics

Authorized Distributor

Click to View Pricing, Inventory, Delivery & Lifecycle Information:

[Amphenol:](#)

[SMP-MSSB-PCT-NM](#)