

1. MATERIALS AND FINISHES:  
BODY - BeCu, GOLD PLATING  
CONTACT - BeCu, GOLD PLATING  
INSULATOR - LCP E130i

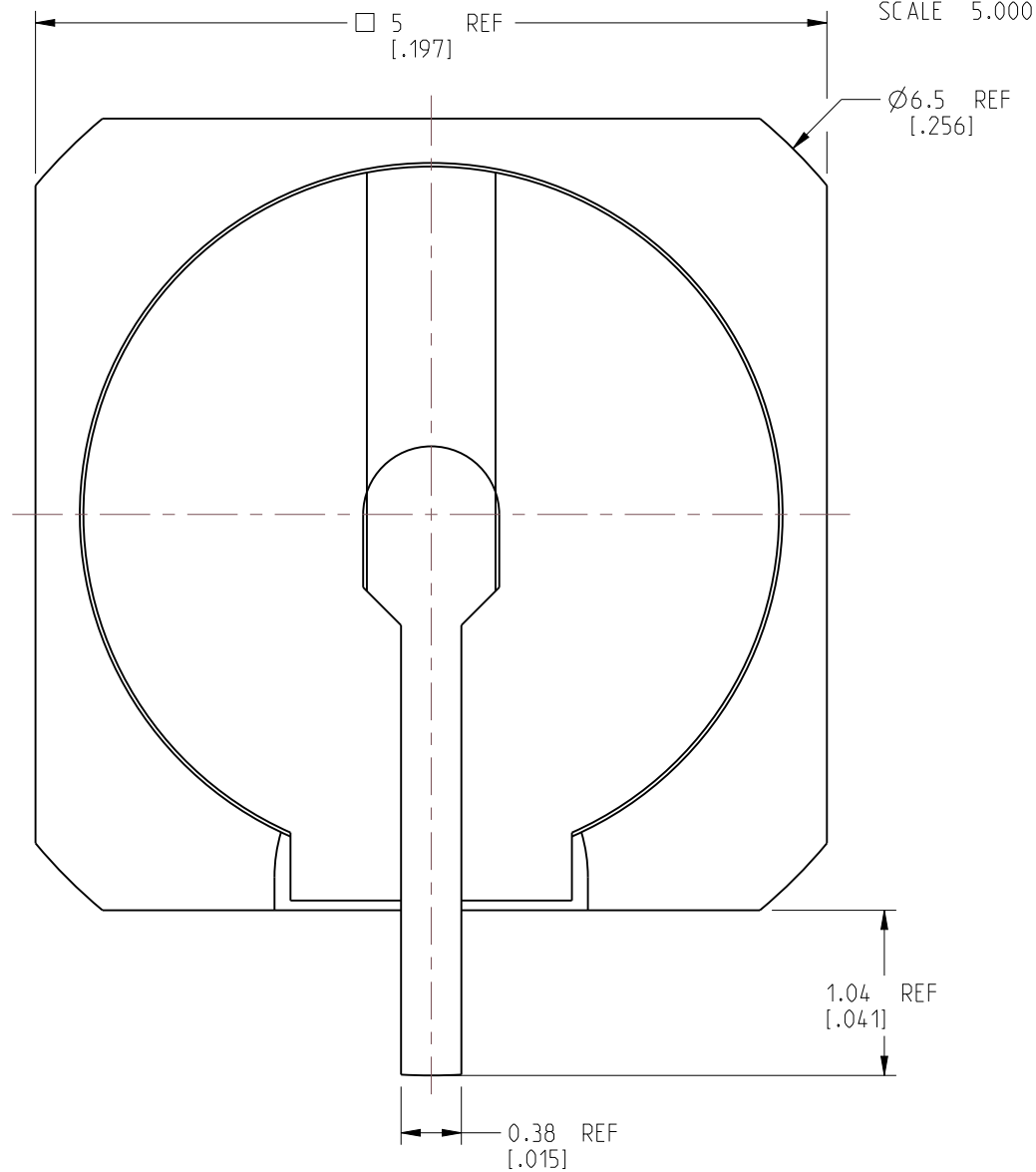
2. ELECTRICAL:

- A. IMPEDANCE: 50 OHM
- B. FREQUENCY RANGE: DC - 20 GHz
- C. VSWR (RETURN LOSS): 1.10 MAX. (-26.4 dB MIN.) @ DC - 8 GHz  
1.22 MAX. (-20 dB MIN.) @ 8 - 20 GHz  
CONNECTOR ONLY, PERFORMANCE WILL VARY  
BASED ON BOARD LAYOUT
- D. DIELECTRIC WITHSTANDING VOLTAGE: 335 VRMS, MIN.

3. MECHANICAL:

- A. DURABILITY: 1000 CYCLES MIN.
- B. TEMPERATURE RANGE: -65°C TO +165°C
- C. ENGAGEMENT FORCE: 2 LBS (9 N) MAX.
- D. DISENGAGEMENT FORCE: 0.5 LBS (2.2 N) MIN.
- E. INNER CONTACT RETENTION FORCE: 1.5 LBS (7 N) MIN.

4. PACKAGING:  
A. QUANTITY: 50 PIECES TRAY  
B. MARKING: TRAY TO BE MARKED  
"AMPHENOL RF, SMP-MSSB-PCS-NM, DATE CODE"



ALL OTHER SHEETS ARE FOR INTERNAL USE ONLY

NOTICE: These drawings, specifications, or other data (1) are, and remain the property of Amphenol corp. (2) must be returned upon request; and (3) are confidential and not to be disclosed to any person other than those to whom they are given by Amphenol Corp. The furnishing of these drawings, specifications, or other data by Amphenol Corp., or to any other person to anyone for any purpose is not to be regarded by implication or otherwise in any manner licensing, granting rights to permitting such holder or any other person to manufacture, use or sell any product, process or design, patented or otherwise, that may in any way be related to or disclosed by said drawings, specifications, or other data.

UNLESS OTHERWISE SPECIFIED  
DIMENSIONS ARE METRIC (INCHES) AND TOLERANCES ARE:

<0.5mm = ±0.05mm	[<0.020 = ±0.002]
0.5 - 6mm = ±0.1mm	[0.020 - 0.236 = ±0.004]
>6.00 - 30mm = ±0.2mm	[>0.236 - 1.181 = ±0.008]
>30.00 - 120mm = ±0.3mm	[>1.181 - 4.725 = ±0.012]

MATERIAL
SEE NOTES

TITLE
SMP STR JACK PCB
RECEPTACLE SMOOTH
BORE SURFACE MOUNT
NON-MAGNETIC

# Amphenol RF

SIZE B	DRAWING NO.	SMP-MSSB-PCS-NM
	ITEM NO.	SMP-MSSB-PCS-NM
	PART NO.	SMP-MSSB-PCS-NM

REV  
A

THIRD ANGLE PROJ. 

## REFERENCE

EAR#	8889
------	------

ANGLES =  $\pm 1^\circ$

ENGR.1  
S.VO

ENGR.2
L.QIN

DATE  
21-OCT-20

SHEET NO. 2 OF 2

SCALE: 21.0:1.0

SIZE

B

	A
--	---

# Mouser Electronics

Authorized Distributor

Click to View Pricing, Inventory, Delivery & Lifecycle Information:

[Amphenol:](#)

[SMP-MSSB-PCS-NM](#)