

NOTES:

1. MATERIALS AND FINISHES:  
BODY - BRASS, GOLD PLATING  
CONTACT - BeCu, GOLD PLATING  
INSULATOR - PTFE, NATURAL

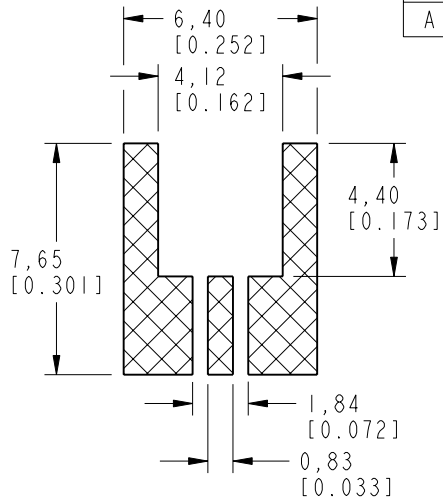
2. ELECTRICAL:  
A. IMPEDANCE: 50 OHM  
B. FREQUENCY RANGE: DC - 26.5 GHz  
C. VSWR(RETURN LOSS): 1.11 MAX (-26 dB MIN) @ DC-6 GHz  
1.22 MAX (-20 dB MIN) @ 6-18 GHz  
1.33 MAX (-17 dB MIN) @ 18-26.5 GHz  
CONNECTOR ONLY, PERFORMANCE WILL VARY  
BASED ON BOARD LAYOUT  
D. DIELECTRIC WITHSTANDING VOLTAGE: 500 VRMS, MIN.

3. MECHANICAL:  
A. DURABILITY: 500 CYCLES MIN.  
B. TEMPERATURE RANGE: -65°C TO +165°C  
C. ENGAGEMENT FORCE: 2 LBS (9 N) MAX.  
D. DISENGAGEMENT FORCE: 0.5 LBS (2.2 N) MIN.

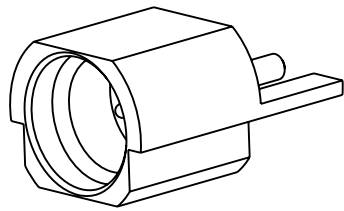
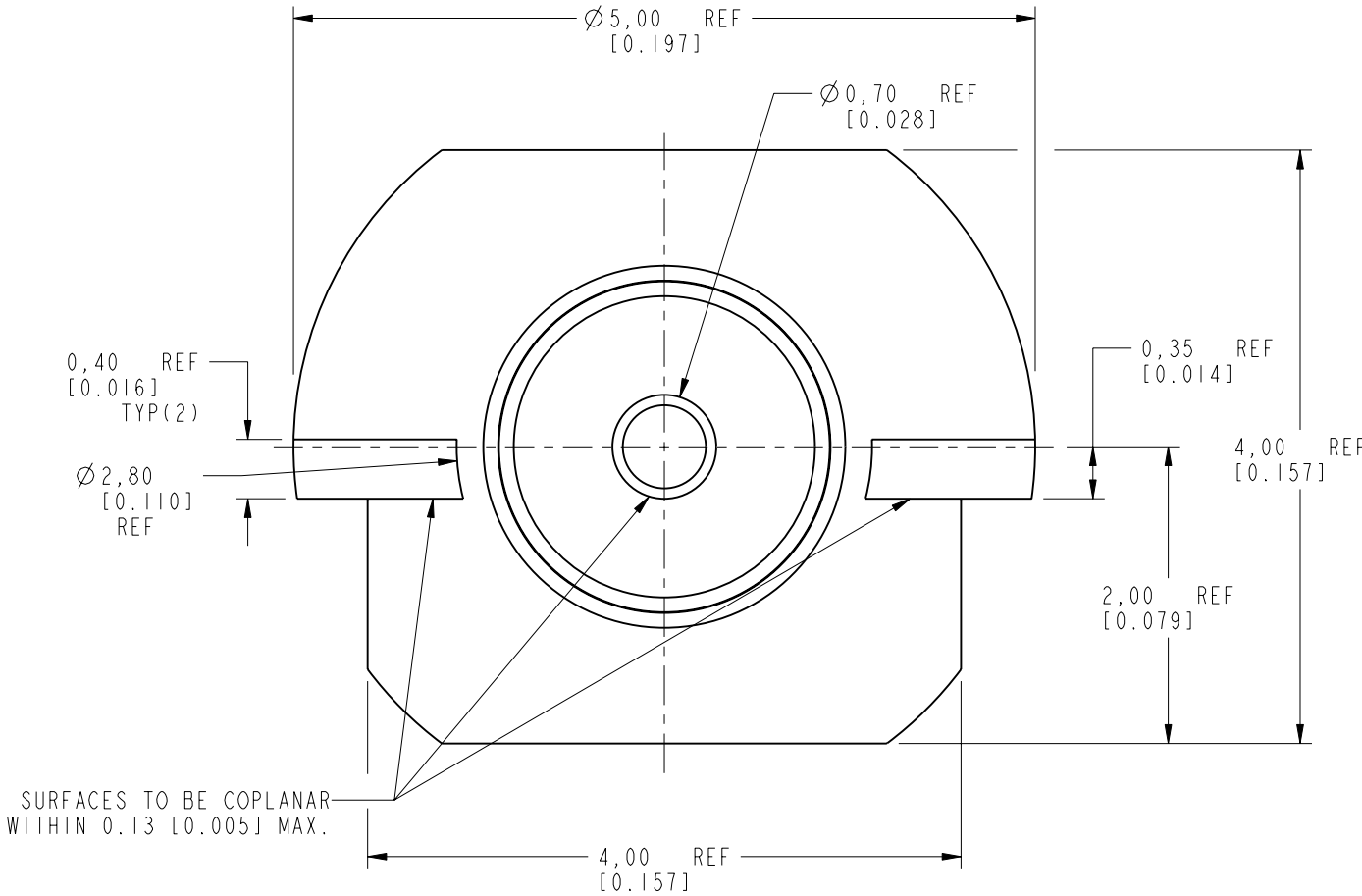
4. PACKAGING:  
A. QUANTITY: SEE TABLE  
B. MARKING: REEL OR TRAY TO BE MARKED  
"AMPHENOL RF, PART NUMBER, YYWW"

PART NUMBER	PACKAGING METHOD	QUANTITY
SMP-MSSB-PCE-4	TRAY	50
SMP-MSSB-PCE-4T	TAPE & REEL	1000

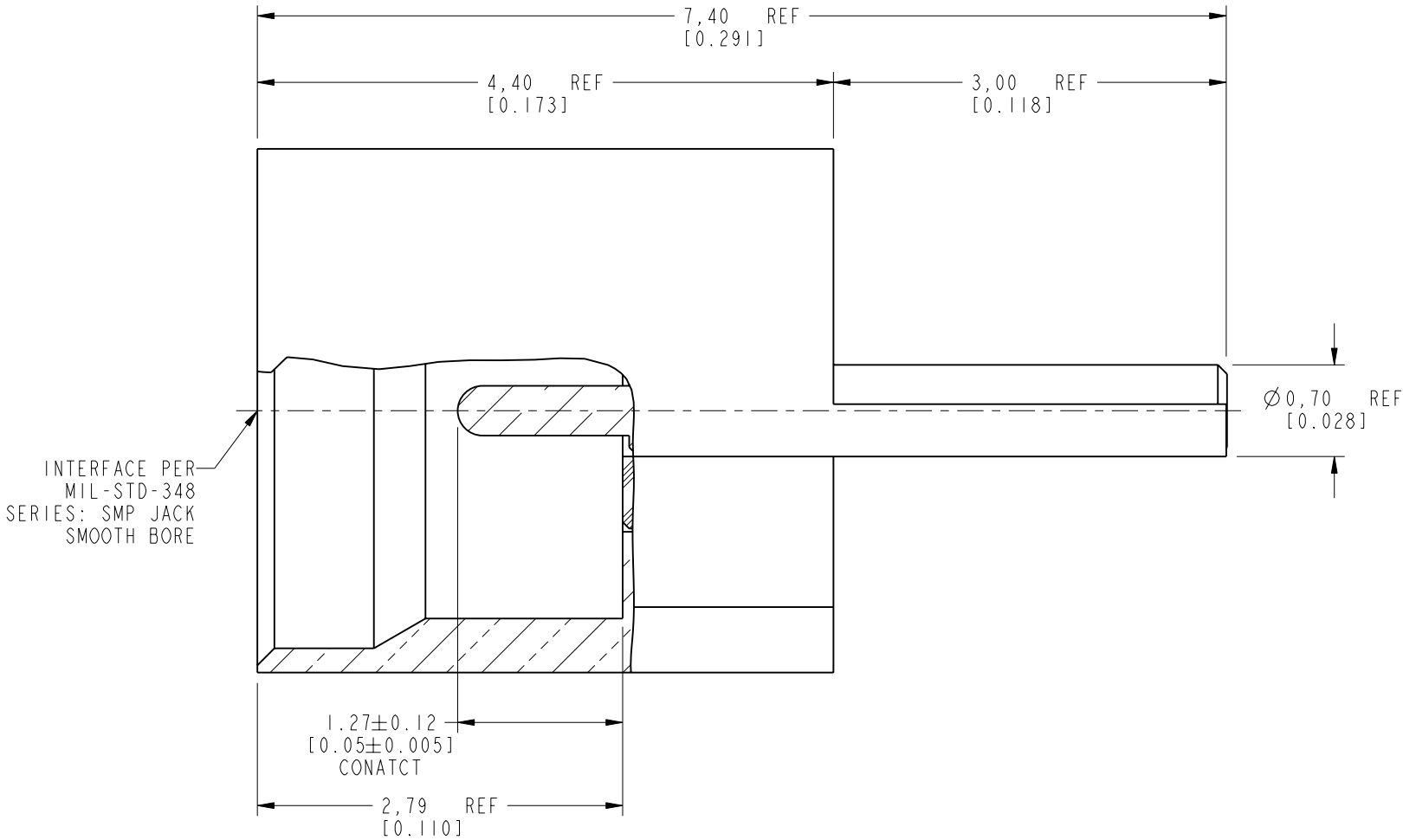
THIRD ANGLE PROJ.



RECOMMENDED  
PCB LAYOUT



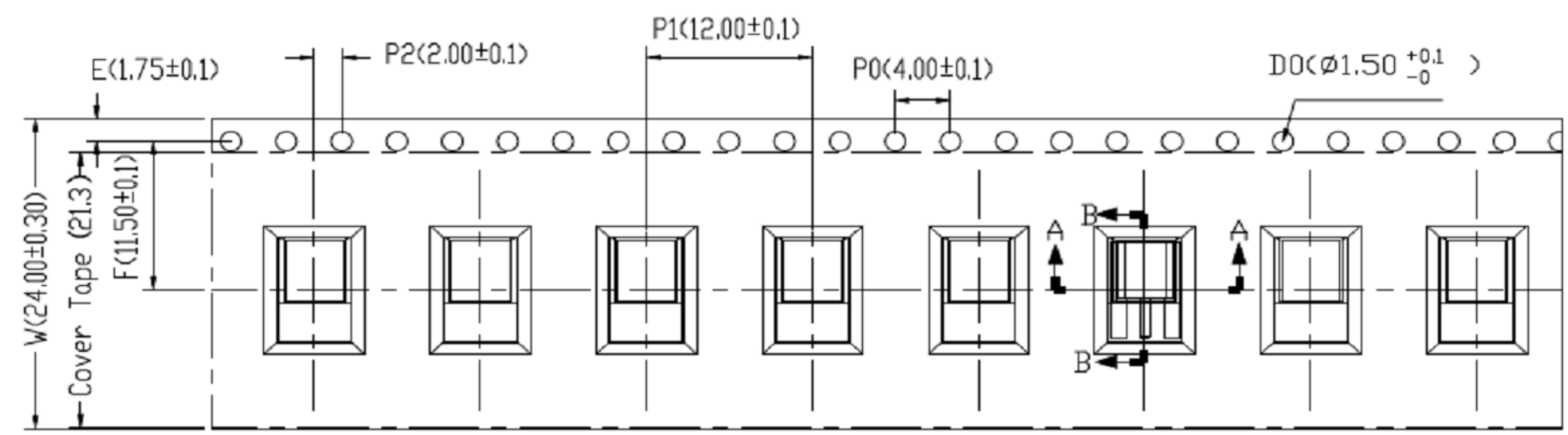
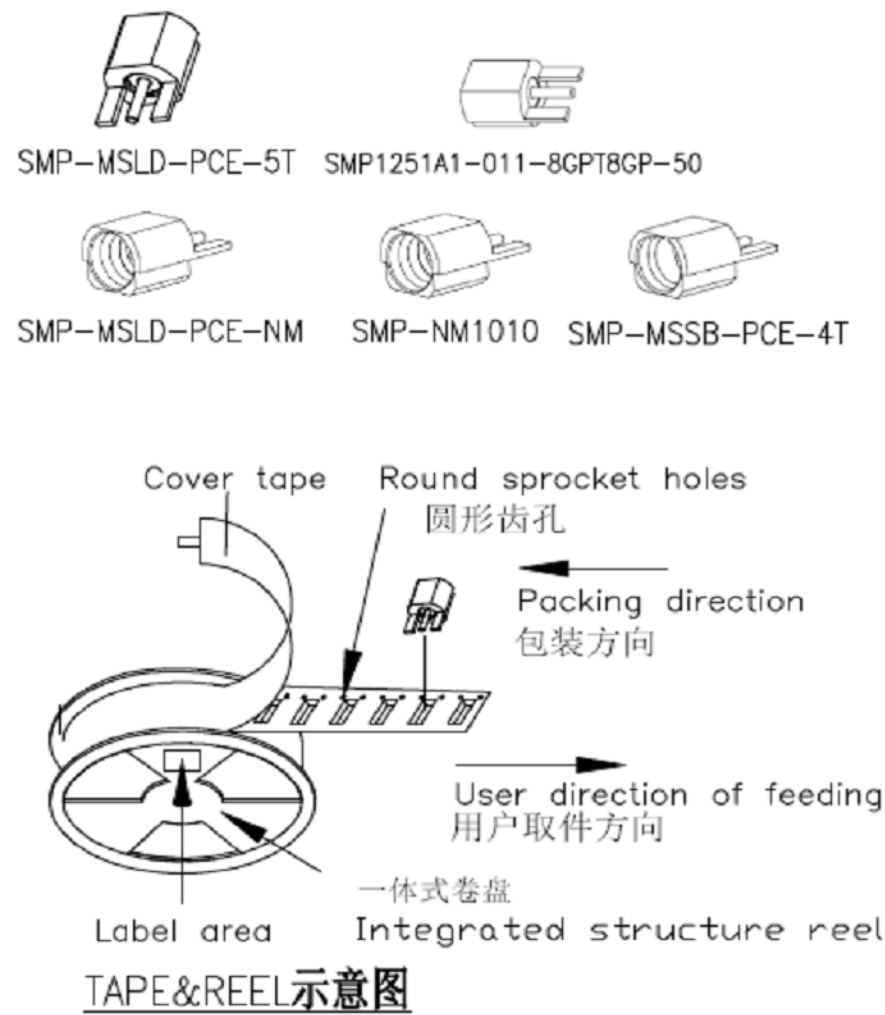
SCALE 5.000



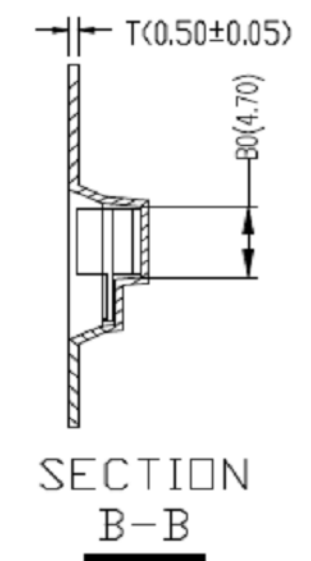
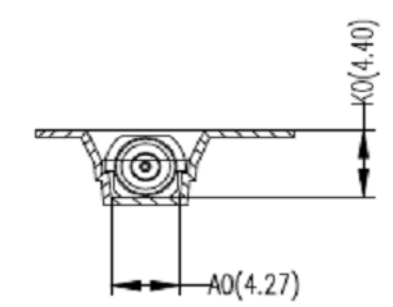
CUSTOMER OUTLINE DRAWING  
ALL OTHER SHEETS ARE FOR INTERNAL USE ONLY

UNLESS OTHERWISE SPECIFIED, DIMENSIONS ARE IN METRIC AND TOLERANCES ARE: <0.5mm      0.5 - 6mm      6 - 30mm      30 - 120mm      ANGLES ± 0.05mm    ±0.1mm      ±0.2mm      ± 0.3mm      ±1°  NOTICE - These drawings, specifications, or other data (1) are, and remain the property of Amphenol corp. (2) must be returned upon request; and (3) are confidential and not to be disclosed to any person other than those to whom they are given by Amphenol Corp. the furnishing of these drawings, specifications, or other data by Amphenol Corp., or to any other person to anyone for any purpose is not to be regarded by implication or otherwise in any manner licensing, granting rights to permitting such holder or any other person to manufacture, use or sell any product, process or design, patented or otherwise, that may in any way be related to or disclosed by said drawings, specifications, or other data.	MATERIAL	DRAWN	DATE	TITLE SMP STR JACK SMOOTH BORE EDGE MOUNT		Amphenol RF  www.amphenolrf.com	
	SEE NOTES	S. DUAN	28-Jun-19				
	REFERENCE	ENGINEER	DATE				
	EAR# 8533	KRISHNA S	31-Jan-19	SCALE: 20.0:1.0		SHEET 2 OF 3	
	REF: SMP-MSLD-PCE-5	APPROVED	DATE				
	CONFIGURATION LEVEL: In Work	CAD FILE	DWG SIZE		REV		
	FINISH		B			A	
				DRAWING NO. SMP-MSSB-PCE-4X			
				ITEM NO. SMP-MSSB-PCE-4X			
				PART NO. SMP-MSSB-PCE-4X			

REV	DESCRIPTION	DATE	ECN	APPR
A	RELEASE TO MFG.	28-Jun-19	11903	EH



用户取件方向  
User direction of feeding



- NOTES:
- 10 sprocket holes pitch cumulative tolerance  $\pm 0.20$  mm.
  - Carrier camber not to exceed 1 mm in 250 mm.
  - A0 and B0 measured on a plane 0.3 mm above the bottom of the pocket.
  - K0 measured from a plane on the inside bottom of the pocket to the top surface of the carrier.
  - All dimensions meet EIA-481-D requirements.
  - Material: Carrier TAPE, Black PS; REEL, Blue (RoHS Compliant)
  - Thickness:  $0.50 \pm 0.05$  mm.
  - Packing length per 13" reel: 12.96 Meters.
  - Component loader per 13" reel: 1000 pcs.

注: 未注公差为  $\pm 0.10$   
NOTE: ALL TOLERANCES ARE:  $\pm 0.10$ , EXCEPT WHERE NOTED

ITEM	W	A0	B0	K0	K1	P1	F	E	D0	D1	P0	P2	T
DIM	$24.00 \pm 0.3$	$4.27 \pm 0.1$	$4.70 \pm 0.1$	$4.40 \pm 0.1$		$12.00 \pm 0.1$	$11.50 \pm 0.1$	$1.75 \pm 0.1$	$1.50^{+0.10}_{-0.00}$		$4.00 \pm 0.1$	$2.00 \pm 0.1$	$0.50 \pm 0.05$

UNLESS OTHERWISE SPECIFIED, DIMENSIONS ARE IN METRIC AND TOLERANCES ARE: <0.5mm      0.5 - 6mm      6 - 30mm      30 - 120mm      ANGLES ± 0.05mm    ±0.1mm      ±0.2mm      ± 0.3mm      ±1°	MATERIAL		DRAWN S. DUAN		DATE 28-Jun-19		TITLE SMP STR JACK SMOOTH BORE EDGE MOUNT		Amphenol RF  www.amphenolrf.com	
	REFERENCE		ENGINEER KRISHNA S		DATE 31-Jan-19					
	EAR# 8533		APPROVED		DATE					
	REF: SMP-MSLD-PCE-5		CAD FILE		DWG SIZE B		REV A		DRAWING NO. SMP-MSSB-PCE-4X	
	CONFIGURATION LEVEL: In Work		FINISH		SHEET 3 OF 3		ITEM NO. SMP-MSSB-PCE-4X		PART NO. SMP-MSSB-PCE-4X	

# Mouser Electronics

Authorized Distributor

Click to View Pricing, Inventory, Delivery & Lifecycle Information:

[Amphenol:](#)

[SMP-MSSB-PCE-4T](#)