

1. MATERIALS AND FINISHES:
BODY - BeCu, GOLD PLATING
CONTACT - BeCu, GOLD PLATING
INSULATOR - LCP E130i

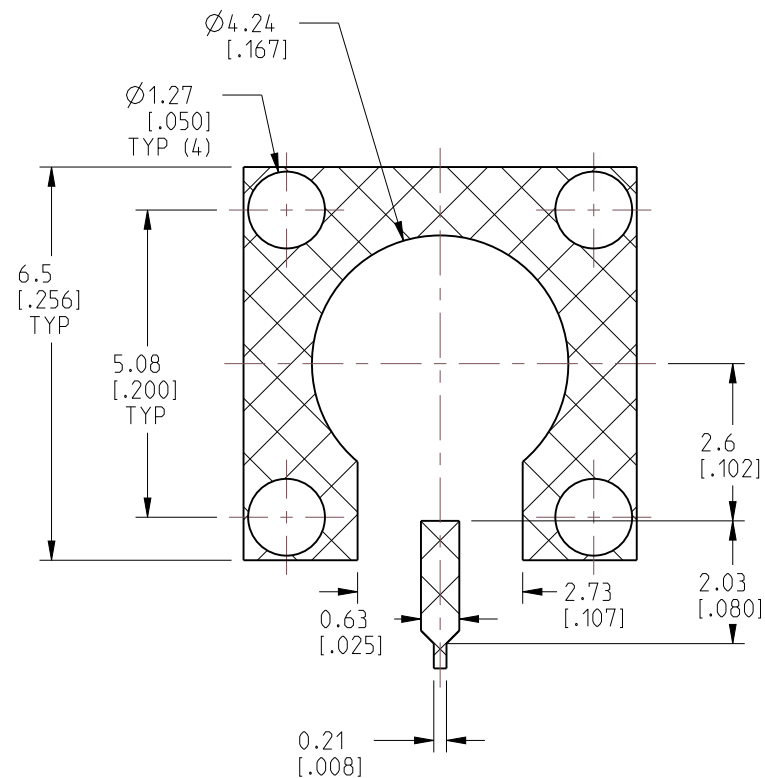
2. ELECTRICAL:

- A. IMPEDANCE: 50 OHM
- B. FREQUENCY RANGE: DC - 20 GHz
- C. RETURN LOSS: 1.10 MAX. (-26.4 dB MIN.), @ DC - 8 GHz
1.22 MAX. (-20 dB MIN.), @ 8 - 20 GHz
CONNECTOR ONLY, PERFORMANCE WILL VARY
BASED ON BOARD LAYOUT.
- D. DIELECTRIC WITHSTANDING VOLTAGE: 500 VRMS, MIN.

3. MECHANICAL:

- A. DURABILITY: 500 CYCLES MIN.
- B. ENGAGEMENT FORCE: 10 LBS (45 N) MAX.
- C. DISENGAGEMENT FORCE: 2 LBS (9 N) MIN.
- D. INNER CONTACT RETENTION FORCE: 1.5 LBS (7 N) MIN.
- E. TEMPERATURE RANGE: -65°C TO +165°C

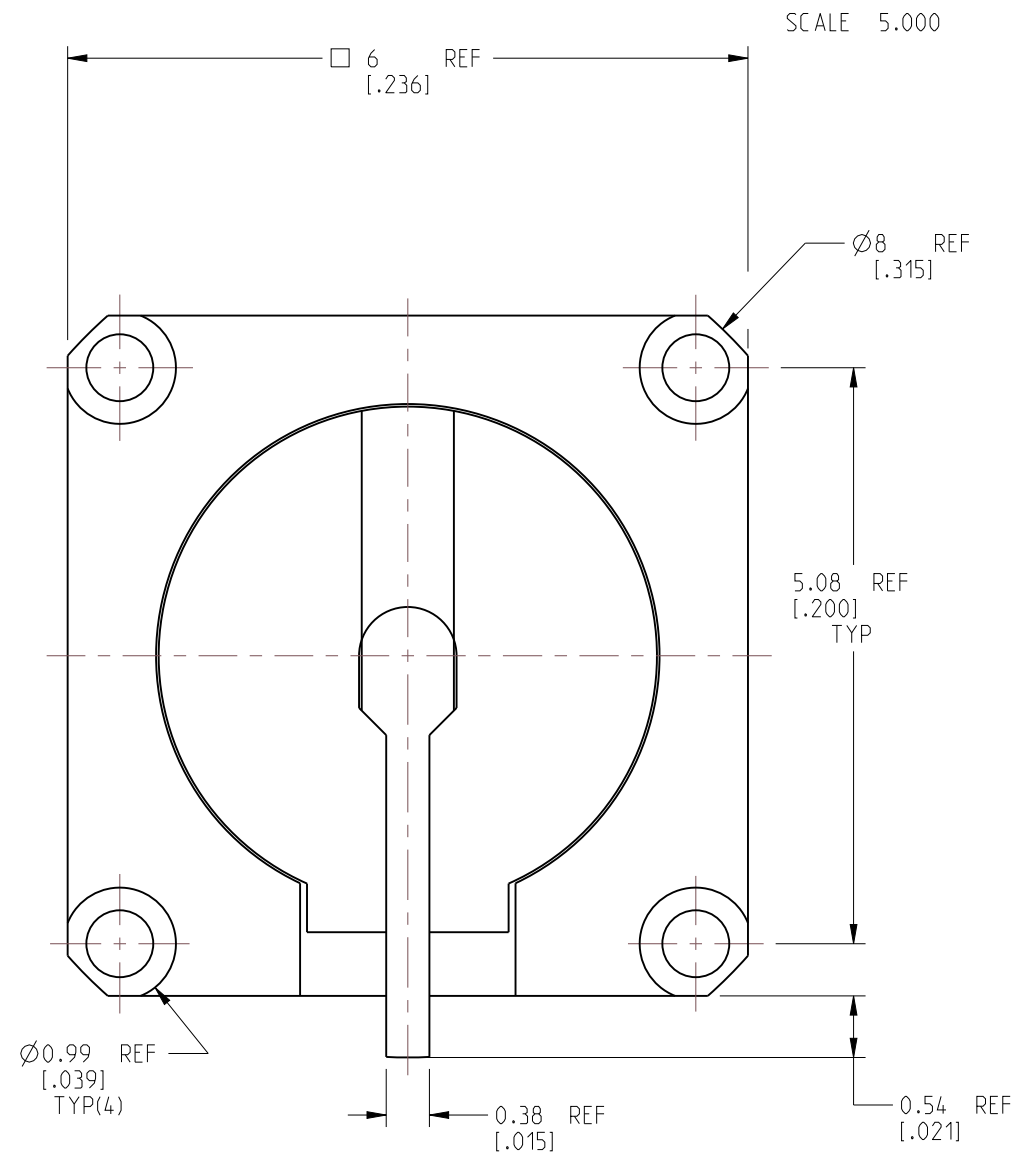
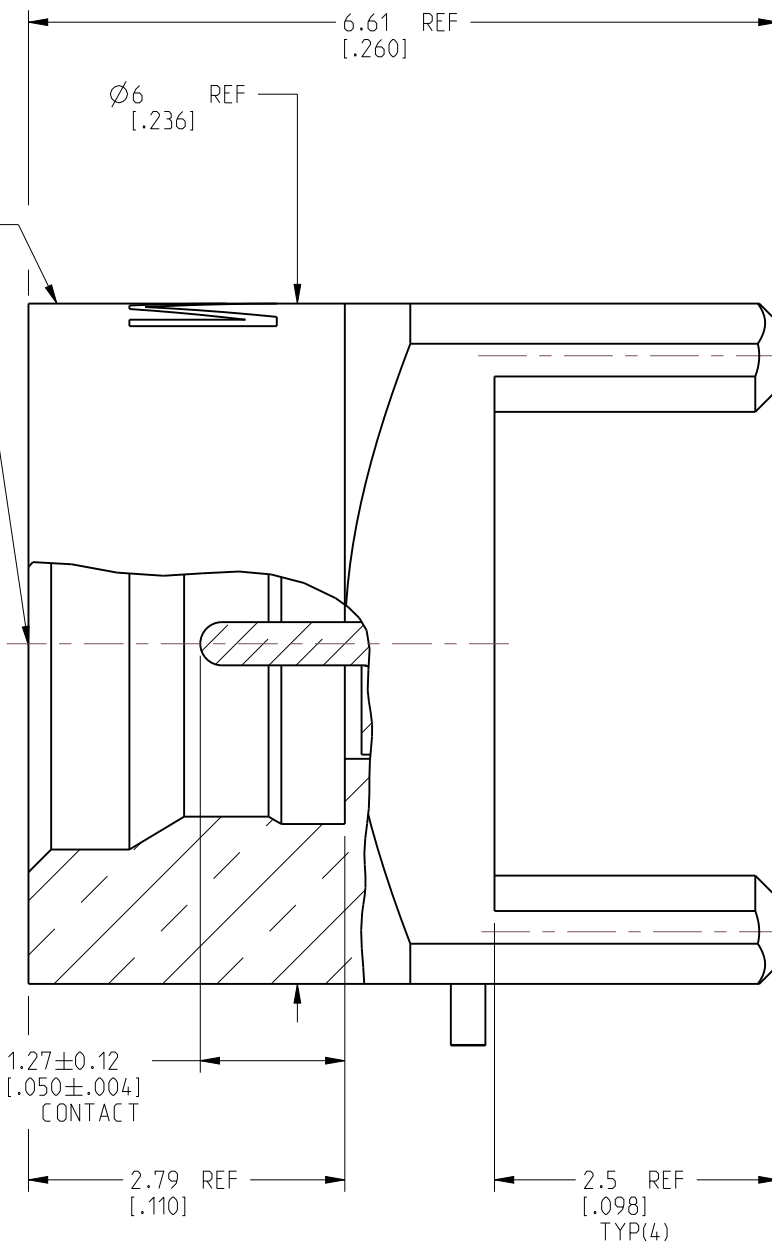
4. PACKAGING:
A. QUANTITY: 50 PCS TRAY
B. MARKING: BAG TO BE MARKED
"AMPHENOL RF, SMP-MSLD-PCT-NM AND DATE CODE"



RECOMMENDED PCB PAD LAYOUT

THIS SURFACE MARKED "NM"
TO SIGNIFY NON-MAGNETIC CONNECTORS

INTERFACE PER
MIL-STD-348
SERIES: SMP JACK
LIMITED DETENT



CUSTOMER OUTLINE DRAWING

ALL OTHER SHEETS ARE FOR INTERNAL USE ONLY

NOTICE: These drawings, specifications, or other data (1) are, and remain the property of Amphenol corp. (2) must be returned upon request; and (3) are confidential and not to be disclosed to any person other than those to whom they are given by Amphenol Corp. The furnishing of these drawings, specifications, or other data by Amphenol Corp., or to any other person to anyone for any purpose is not to be regarded by implication or otherwise in any manner licensing, granting rights to permitting such holder or any other person to manufacture, use or sell any product, process or design, patented or otherwise, that may in any way be related to or disclosed by said drawings, specifications, or other data.

UNLESS OTHERWISE SPECIFIED
DIMENSIONS ARE METRIC (INCHES) AND TOLERANCES ARE:

| | |
|-------------------------|---------------------------|
| <0.5mm = ±0.05mm | [<0.020 = ±0.002] |
| 0.5 - 6mm = ±0.1mm | [0.020 - 0.236 = ±0.004] |
| >6.00 - 30mm = ±0.2mm | [>0.236 - 1.181 = ±0.008] |
| >30.00 - 120mm = ±0.3mm | [>1.181 - 4.725 = ±0.012] |

| MATERIAL |
|----------|
|----------|

| |
|--------|
| ENGR.1 |
| S.VO |

ENGR.2
L.QIN

DATE 21-OCT-20

| TITLE |
|-------|
|-------|

SMP STR JACK
PCB RECEPTACLE
LIMITED DETENT
NON-MAGNETIC

SHEET NO. 2 OF 2

SCALE: 15.0:1.0

| SIZE |
|------|
|------|

| | |
|-------------|-----------------|
| DRAWING NO. | SMP-MSLD-PCT-NM |
| ITEM NO. | SMP-MSLD-PCT-NM |
| PART NO. | SMP-MSLD-PCT-NM |

EV

A

| REVISIONS | | | | |
|-----------|-----------------|-----------|-------|----|
| REV | DESCRIPTION | DATE | ECN | BY |
| A | RELEASE TO MFG. | 18-Nov-22 | 16309 | SH |

Mouser Electronics

Authorized Distributor

Click to View Pricing, Inventory, Delivery & Lifecycle Information:

[Amphenol:](#)

[SMP-MSLD-PCT-NM](#)