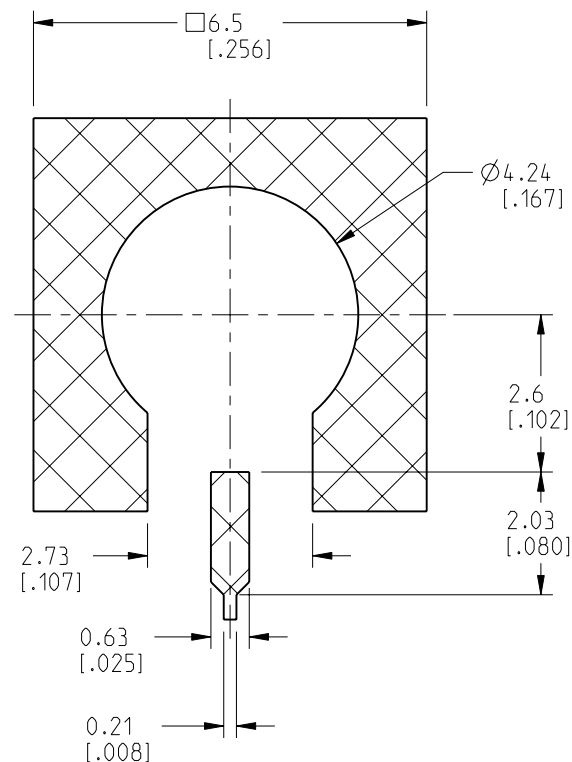
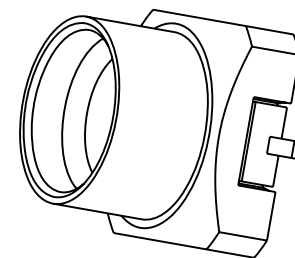
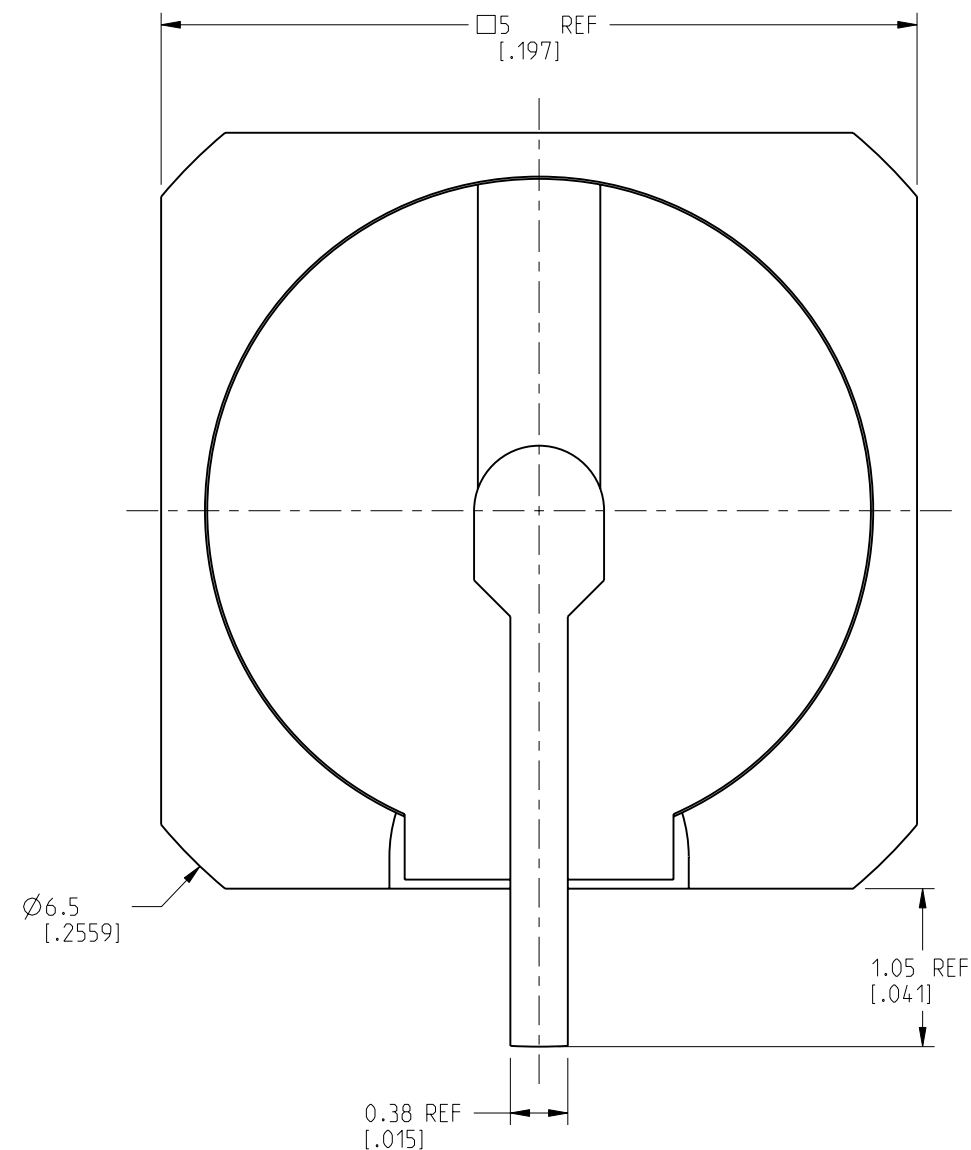
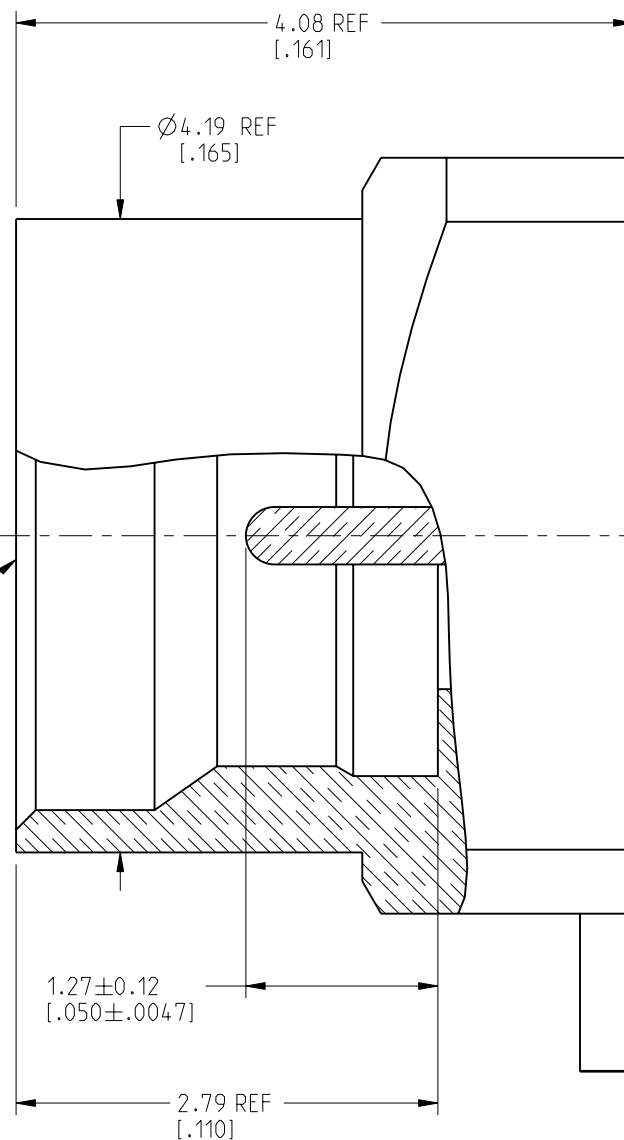


1. MATERIALS AND FINISHES:  
BODY - BRASS, GOLD PLATING  
CONTACT - BRASS, GOLD PLATING  
INSULATOR - LCP E130i, NATURAL
2. ELECTRICAL:  
A. IMPEDANCE: 50 OHM  
B. FREQUENCY RANGE: DC-20 GHz  
C. VSWR (RETURN LOSS): 1.10 (-26.4 dB MIN.) MAX. @ DC-8 GHz  
1.22 (-20 dB MIN.) MAX. @ 8-20 GHz  
D. DIELECTRIC WITHSTANDING VOLTAGE: 500 VRMS, MIN.
3. MECHANICAL:  
A. DURABILITY: 500 CYCLES MIN.  
B. TEMPERATURE RANGE: -40°C TO +85°C
4. PACKAGING:  
A. QUANTITY: 50 PCS/TRAY  
B. MARKING: PACKAGING TO BE MARKED  
"AMPHENOL RF, SMP-MSLD-PCS-20, DATE CODE"



INTERFACE PER  
MIL-STD-348  
SERIES: SMP JACK  
LIMITED DETENT



SCALE 6.000

REVISIONS				
REV	DESCRIPTION	DATE	ECN	APPR
A	RELEASE TO MFG.	20-Apr-20	14923	S.HSIEH

## CUSTOMER OUTLINE DRAWING

ALL OTHER SHEETS ARE FOR INTERNAL USE ONLY

NOTICE: These drawings, specifications, or other data (1) are, and remain the property of Amphenol corp. (2) must be returned upon request; and (3) are confidential and not to be disclosed to any person other than those to whom they are given by Amphenol Corp. The furnishing of these drawings, specifications, or other data by Amphenol Corp., or to any other person to anyone for any purpose is not to be regarded by implication or otherwise in any manner licensing, granting rights to permitting such holder or any other person to manufacture, use or sell any product, process or design, patented or otherwise, that may in any way be related to or disclosed by said drawings, specifications, or other data.

UNLESS OTHERWISE SPECIFIED  
DIMENSIONS ARE METRIC (INCHES) AND TOLERANCES ARE:

<0.5mm = $\pm 0.05$ mm	[<0.020 = $\pm 0.002$ ]
>0.5 - 6mm = $\pm 0.1$ mm	[>0.020 - 0.236 = $\pm 0.004$ ]
>6.00 - 30mm = $\pm 0.2$ mm	[>0.236 - 1.181 = $\pm 0.008$ ]
>30.00 - 120mm = $\pm 0.3$ mm	[>1.181 - 4.725 = $\pm 0.012$ ]

ENGINEER  
WIKIDATE  
16-Apr-20

TITLE	DESCRIPTION	QTY	UNIT	PRICE	TOTAL
SMP JACK					
SURFACE MOUNT					
LIMITED DETENT					

SHEET NO. 2 OF 2

SCALF: 20.0:1.0

SIZE  B	DRAWING NO.	SMP-MSLD-PCS-20
	ITEM NO.	SMP-MSLD-PCS-20
	PART NO.	SMP-MSLD-PCS-20

REV  
A

# Mouser Electronics

Authorized Distributor

Click to View Pricing, Inventory, Delivery & Lifecycle Information:

[Amphenol:](#)

[SMP-MSLD-PCS-20](#)