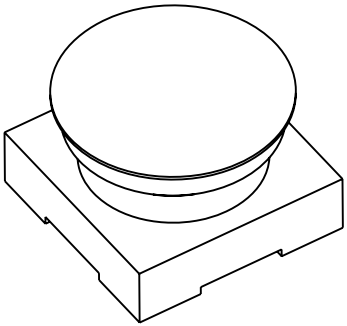
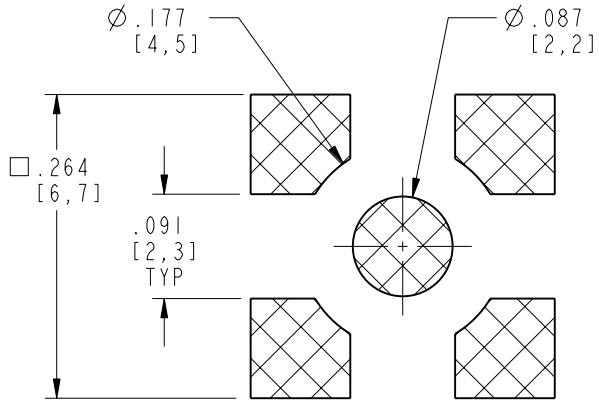


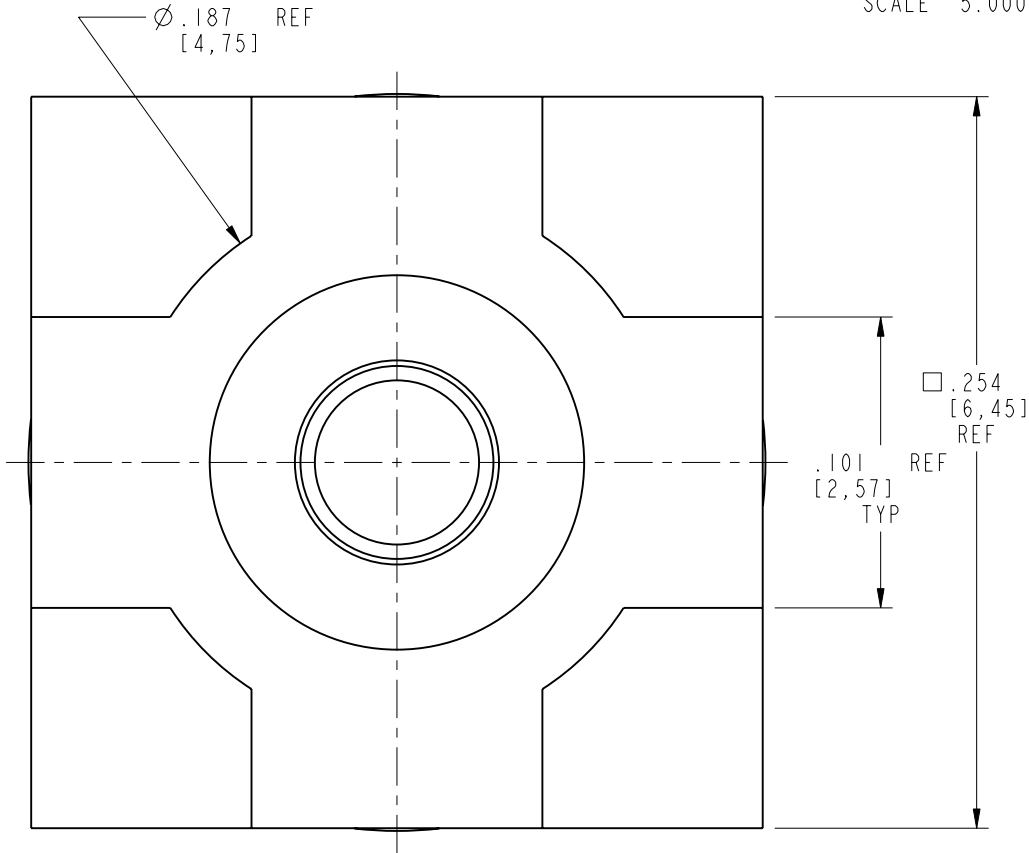
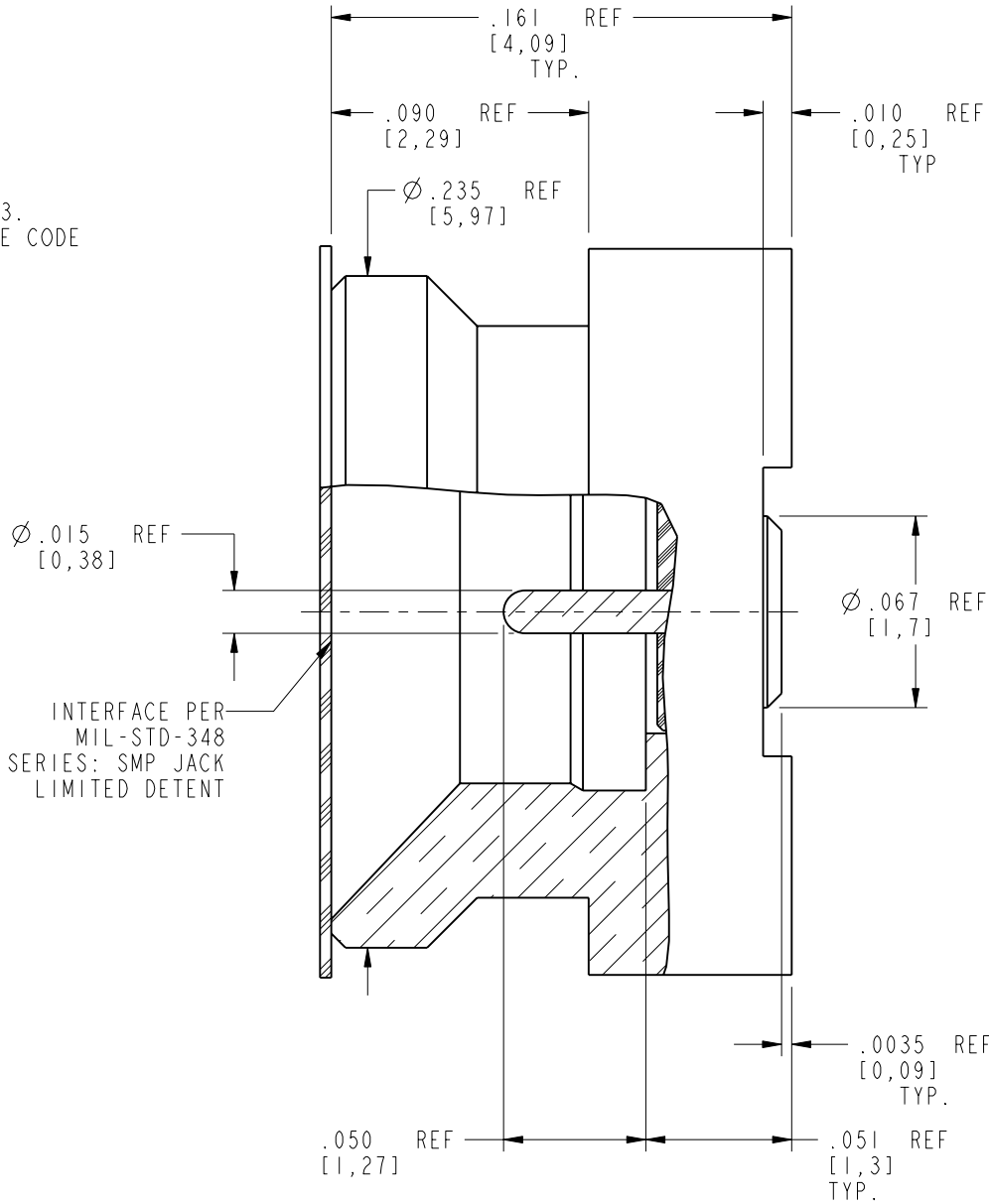
|  |  |           |                            |           |       |      |
|--|--|-----------|----------------------------|-----------|-------|------|
| NOTES:<br><br>1. MATERIALS AND FINISHES:<br>BODY - BRASS, GOLD PLATING<br>CONTACT - BERYLLIUM COPPER, GOLD PLATING<br>INSULATOR - PEEK, NATURAL<br>KAPTON FILM - POLYIMIDE, AMBER<br><br>2. ELECTRICAL:<br>A. IMPEDANCE: 50 OHM<br>B. FREQUENCY RANGE: DC - 10 GHz<br>C. VSWR: 1.25 MAX @ DC - 6 GHz<br>1.50 MAX @ 6 - 10 GHz<br>D. DIELECTRIC WITHSTANDING VOLTAGE: 500 VRMS, MIN.<br><br>3. PHYSICAL:<br>A. DURABILITY: 500 CYCLES MIN.<br>B. ENGAGEMENT FORCE: 10.0 LBS MAX<br>C. DISENGAGEMENT FORCE: 2.0 LBS MIN<br>D. TEMPERATURE RANGE: -65° C TO +165° C<br><br>4. PACKAGING:<br>A. TAPE AND REEL PACKAGING, QTY 1200 PCS, SEE SHEET 3.<br>B. MARK PACKAGING: AMPHENOL RF, SMP-MSLD-PCS-16, DATE CODE QTY 1200 | THIRD ANGLE PROJ.  | REVISIONS |                            |           |       |      |
|  |  | REV       | DESCRIPTION                | DATE      | ECO   | APPR |
|  |  | A         | RELEASE TO MFG.            | 05-Dec-17 | 06042 | BMG  |
|  |  | B         | UPDATED FREQUENCY AND VSWR | 25-AUG-20 | 15302 | EH   |
|  |  |           |                            |           |       |      |



SCALE 5.000



RECOMMENDED  
PCB LAYOUT



**CUSTOMER OUTLINE DRAWING**  
ALL OTHER SHEETS ARE FOR INTERNAL USE ONLY

|  |                              |                     |                   |  |          |                                   |  |
|--|------------------------------|---------------------|-------------------|--|----------|-----------------------------------|--|
| UNLESS OTHERWISE SPECIFIED, DIMENSIONS ARE IN METRIC AND TOLERANCES ARE:<br><0.5mm 0.5 - 6mm 6 - 30mm 30 - 120mm ANGLES<br>± 0.05mm ±0.1mm ±0.2mm ± 0.3mm ±1°<br><br>NOTICE - These drawings, specifications, or other data (1) are, and remain the property of Amphenol corp. (2) must be returned upon request; and (3) are confidential and not to be disclosed to any person other than those to whom they are given by Amphenol Corp. the furnishing of these drawings, specifications, or other data by Amphenol Corp., or to any other person to anyone for any purpose is not to be regarded by implication or otherwise in any manner licensing, granting rights to permitting such holder or any other person to manufacture, use or sell any product, process or design, patented or otherwise, that may in any way be related to or disclosed by said drawings, specifications, or other data. | MATERIAL<br>-                | DRAWN<br>WIKI       | DATE<br>27-Aug-20 | TITLE<br>SMP JACK<br>LIMITED DETENT<br>CATCHER'S MITT<br>SURFACE MOUNT |          | Amphenol RF<br>www.amphenolrf.com |  |
|  | REFERENCE<br>---- AND        | ENGINEER<br>SUNDE   | DATE<br>05-Dec-17 |  |          | DRAWING NO. SMP-MSLD-PCS-16       |  |
|  | CONFIGURATION LEVEL: In Work | APPROVED<br>S.HSIEH | DATE<br>27-Aug-20 |  |          | ITEM NO. SMP-MSLD-PCS-16          |  |
|  | FINISH                       | CAD FILE            |                   | SCALE: 15.0:1.0 SHEET 2 OF 3   |          | PART NO. SMP-MSLD-PCS-16          |  |
|  |                              |                     |                   | DWG SIZE<br>B  | REV<br>B |                                   |  |

THIRD ANGLE PROJ. 

## REVISIONS

| REV | DESCRIPTION     | DATE      | ECO   | APPR |
|-----|-----------------|-----------|-------|------|
| A   | RELEASE TO MFG. | 05-Dec-17 | 06042 | BMG  |
| B   | SEE SHEET 2     | 25-AUG-20 | 15302 | EH   |



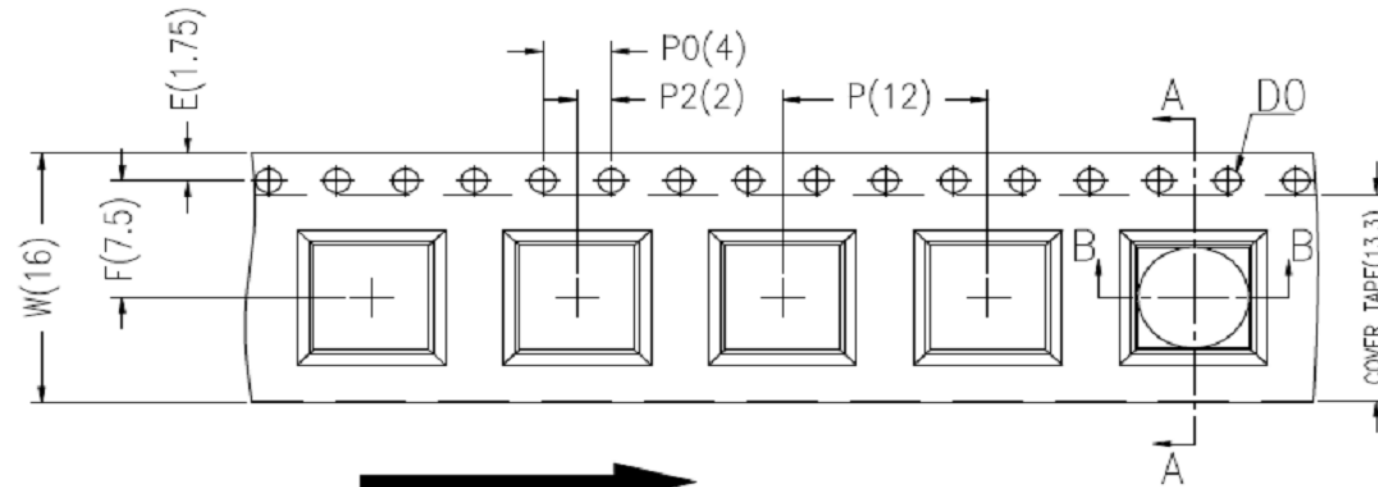
SMP-MSLD-PCS-14



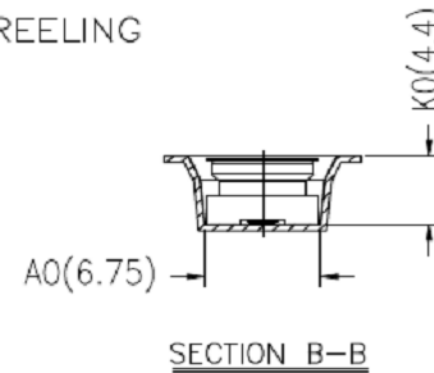
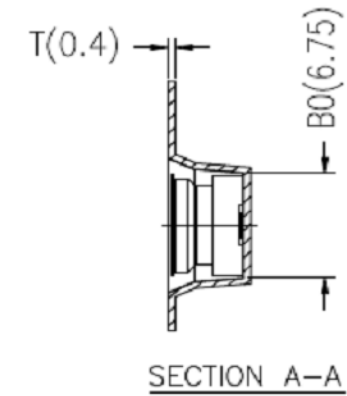
SMP-MSSB-PCS-14  
ADDED THE CAPTON FILM FOR CONNECTOR



SMP-MSLD-PCS-16  
WITH THE CAPTION FILM ON CONNECTOR



客户取件方向  
CUSTOMER DIRECTION OF UNREELING



SECTION B-B

NOTES:

1. 10 sprocket holes pitch cumulative tolerance  $\pm 0.20$  mm.
2. Carrier camber not to exceed 1 mm in 250 mm.
3. A0 and B0 measured on a plane 0.3 mm above the bottom of the pocket.
4. K0 measured from a plane on the inside bottom of the pocket to the top surface of the carrier.
5. All dimensions meet EIA-481-D requirements.
6. Material: Black PS (RoHS Compliant)
7. Thickness:  $0.40 \pm 0.05$  mm.
8. Packing length per 13" reel: 15.3 Meters.
9. Component loader per 13" reel: 1200 pcs.

注:未注公差為: $\pm 0.10$

NOTE: ALL TOLERANCES ARE:  $\pm 0.10$ , EXCEPT WHERE NOTED

| ITEM | W      | A <sub>0</sub> | B <sub>0</sub> | K <sub>0</sub> | K <sub>1</sub> | P      | F       | E        | D <sub>0</sub>                       | D <sub>1</sub> | P <sub>0</sub> | P <sub>2</sub> | T         |
|------|--------|----------------|----------------|----------------|----------------|--------|---------|----------|--------------------------------------|----------------|----------------|----------------|-----------|
| DIM  | 16±0.3 | 6.75±0.1       | 6.75±0.1       | 4.4±0.1        |                | 12±0.1 | 7.5±0.1 | 1.75±0.1 | 1.5 <sup>+0.1</sup> <sub>-0.00</sub> |                | 4.0±0.1        | 2.0±0.1        | 0.40±0.05 |

## CUSTOMER OUTLINE DRAWING

**ALL OTHER SHEETS ARE FOR INTERNAL USE ONLY**

|   |  |  |  |  |   |  |                      |  |                   |  |  |  |                                       |  |
|---|--|--|--|--|---|--|----------------------|--|-------------------|--|--|--|---------------------------------------|--|
| UNLESS OTHERWISE SPECIFIED, DIMENSIONS ARE IN METRIC AND TOLERANCES ARE:<br><0.5mm      0.5 - 6mm      6 - 30mm      30 - 120mm      ANGLES<br>± 0.05mm    ±0.1mm      ±0.2mm      ± 0.3mm      ±1°   |  |  |  |  | MATERIAL<br>-<br>-  |  | DRAWN<br>WIKI        |  | DATE<br>27-Aug-20 |  | TITLE<br>SMP JACK<br>LIMITED DETENT<br>CATCHER'S MITT<br>SURFACE MOUNT |  | Amphenol RF<br><br>www.amphenolrf.com |  |
| NOTICE - These drawings, specifications, or other data (1) are, and remain the property of Amphenol corp. (2) must be returned upon request; and (3) are confidential and not to be disclosed to any person other than those to whom they are given by Amphenol Corp. the furnishing of these drawings, specifications, or other data by Amphenol Corp., or to any other person to anyone for any purpose is not to be regarded by implication or otherwise in any manner licensing, granting rights to permitting such holder or any other person to manufacture, use or sell any product, process or design, patented or otherwise, that may in any way be related to or disclosed by said drawings, specifications, or other data. |  |  |  |  |   |  | ENGINEER<br>SUNDE    |  | DATE<br>05-Dec-17 |  |  |  |                                       |  |
|   |  |  |  |  | REFERENCE<br>---- AND<br><br>CONFIGURATION LEVEL: In Work |  | APPROVED<br>S. HSIEH |  | DATE<br>27-Aug-20 |  | SCALE: 15.0:1.0 SHEET 3 OF 3   |  |                                       |  |
|   |  |  |  |  |   |  | FINISH               |  | CAD FILE          |  | DWG SIZE<br>B  |  | REV<br>B                              |  |
|   |  |  |  |  | DRAWING NO. SMP-MSLD-PCS-16                               |  |                      |  |                   |  |  |  |                                       |  |
| ITEM NO. SMP-MSLD-PCS-16  |  |  |  |  |   |  |                      |  |                   |  |  |  |                                       |  |
| PART NO. SMP-MSLD-PCS-16  |  |  |  |  |   |  |                      |  |                   |  |  |  |                                       |  |

# Mouser Electronics

Authorized Distributor

Click to View Pricing, Inventory, Delivery & Lifecycle Information:

[Amphenol:](#)

[SMP-MSLD-PCS-16](#)