

NOTES:

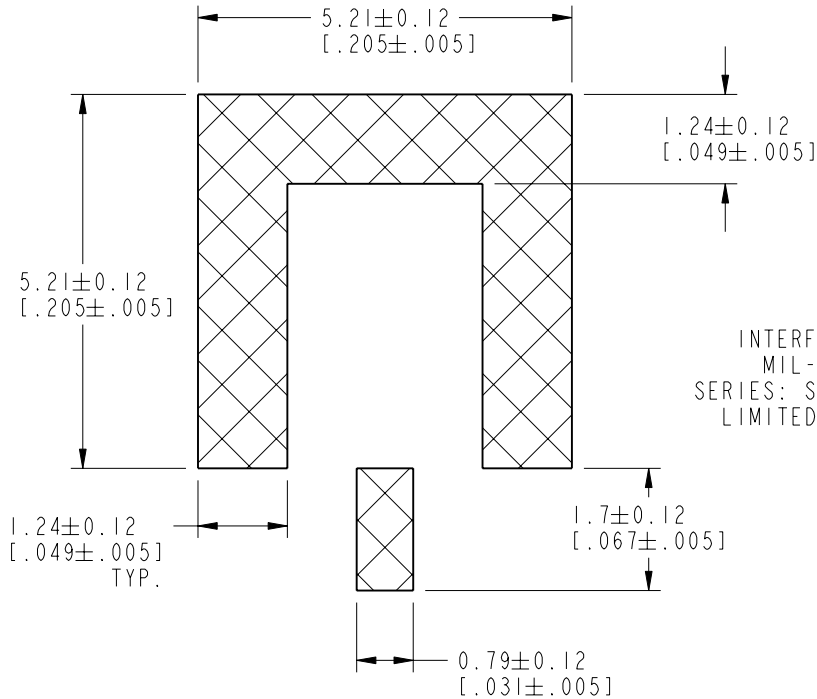
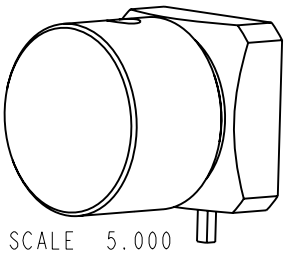
1. MATERIALS AND FINISHES:
BODY & CONTACT- BRASS, GOLD PLATING
INSULATOR - LCP EI30i
CAP - PTFE, NATURAL
2. ELECTRICAL:
A. IMPEDANCE: 50 OHM
B. FREQUENCY RANGE: DC - 18 GHz
C. VSWR (RETURN LOSS): 1.10 MAX. (-26.4 dB MIN.) @ DC - 6 GHz
1.15 MAX. (-23.1 dB MIN.) @ 6 - 10 GHz
1.30 MAX. (-17.7 dB MIN.) @ 10 - 18 GHz
CONNECTOR ONLY, PERFORMANCE WILL VARY
BASED ON BOARD LAYOUT
D. DIELECTRIC WITHSTANDING VOLTAGE: 500 VRMS, MIN.

3. MECHANICAL:
A. DURABILITY: 500 CYCLES MIN.
B. TEMPERATURE RANGE: -65°C TO +165°C
C. ENGAGEMENT FORCE: 10 LBS (45 N) MAX.
D. DISENGAGEMENT FORCE: 2 LBS (9 N) MIN.
E. INNER CONTACT RETENTION FORCE: 1.5 LBS (7 N) MIN.
4. PACKAGING:
A. QUANTITY: TAPE & REEL PACKAGING, 800 PCS/REEL
B. MARKING: REEL TO BE MARKED:
"AMPHENOL RF, SMP-MSLD-PCS17T AND DATE CODE"

THIRD ANGLE PROJ.

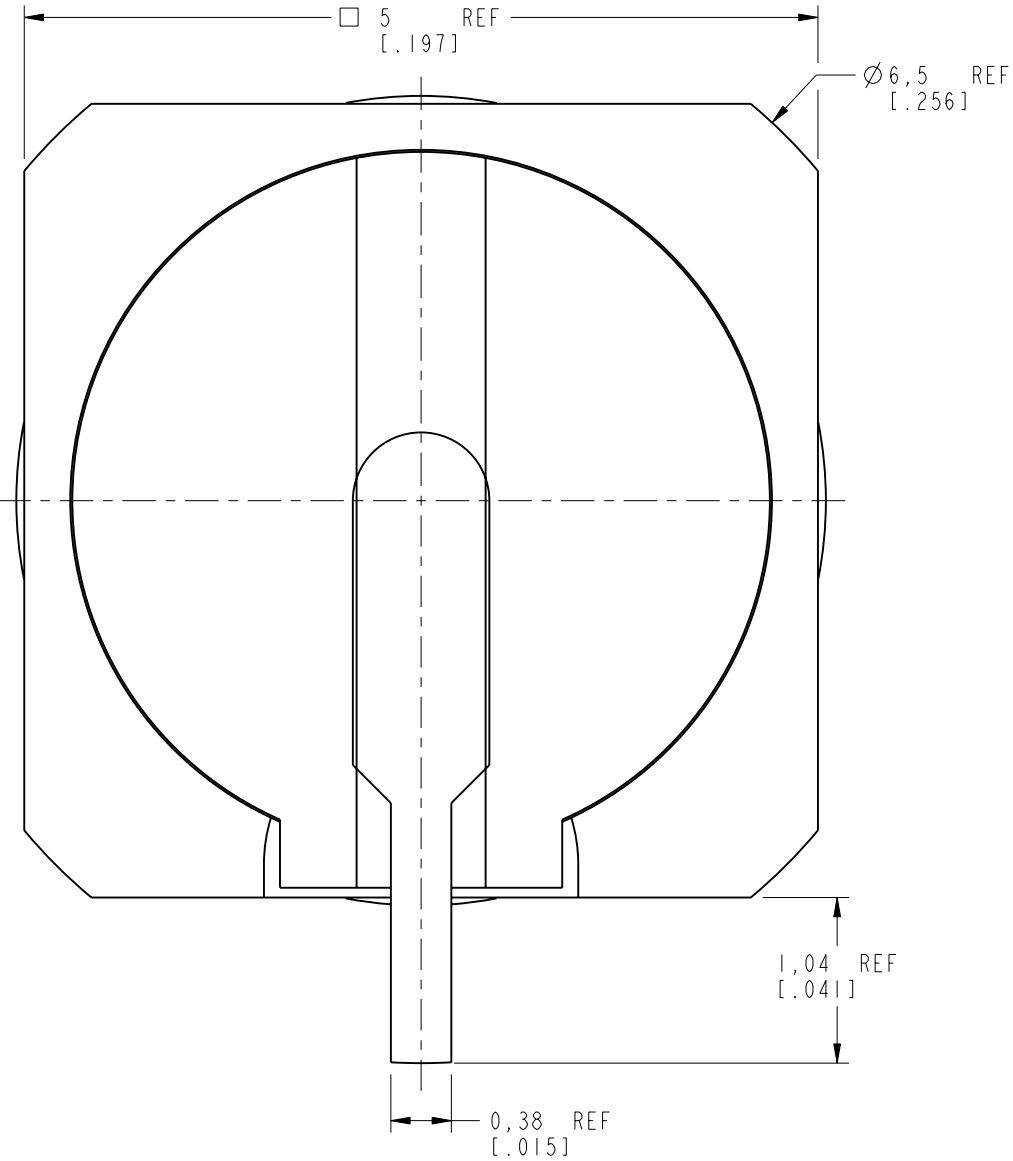
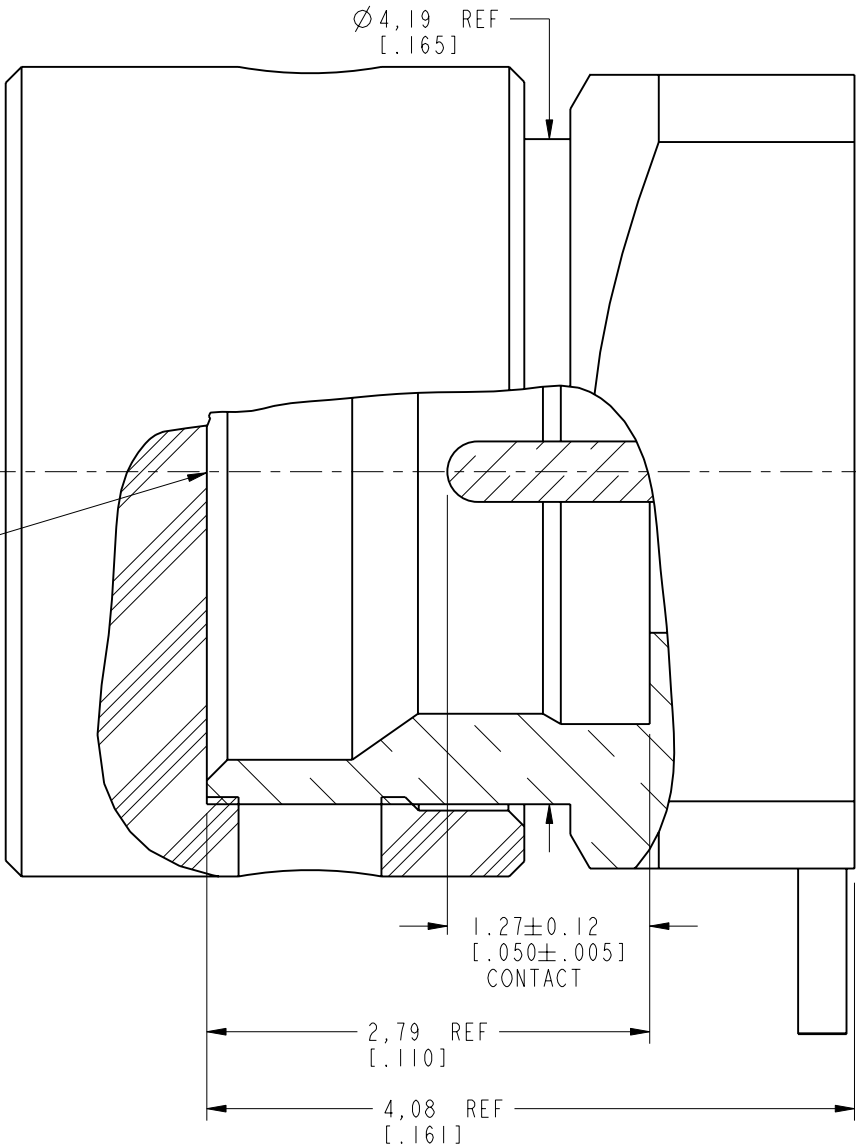
REVISIONS

REV	DESCRIPTION	DATE	ECO	APPR
A	RELEASE TO MFG.	07-Jun-18	08221	BMG



RECOMMENDED PCB LAYOUT DIMENSIONS

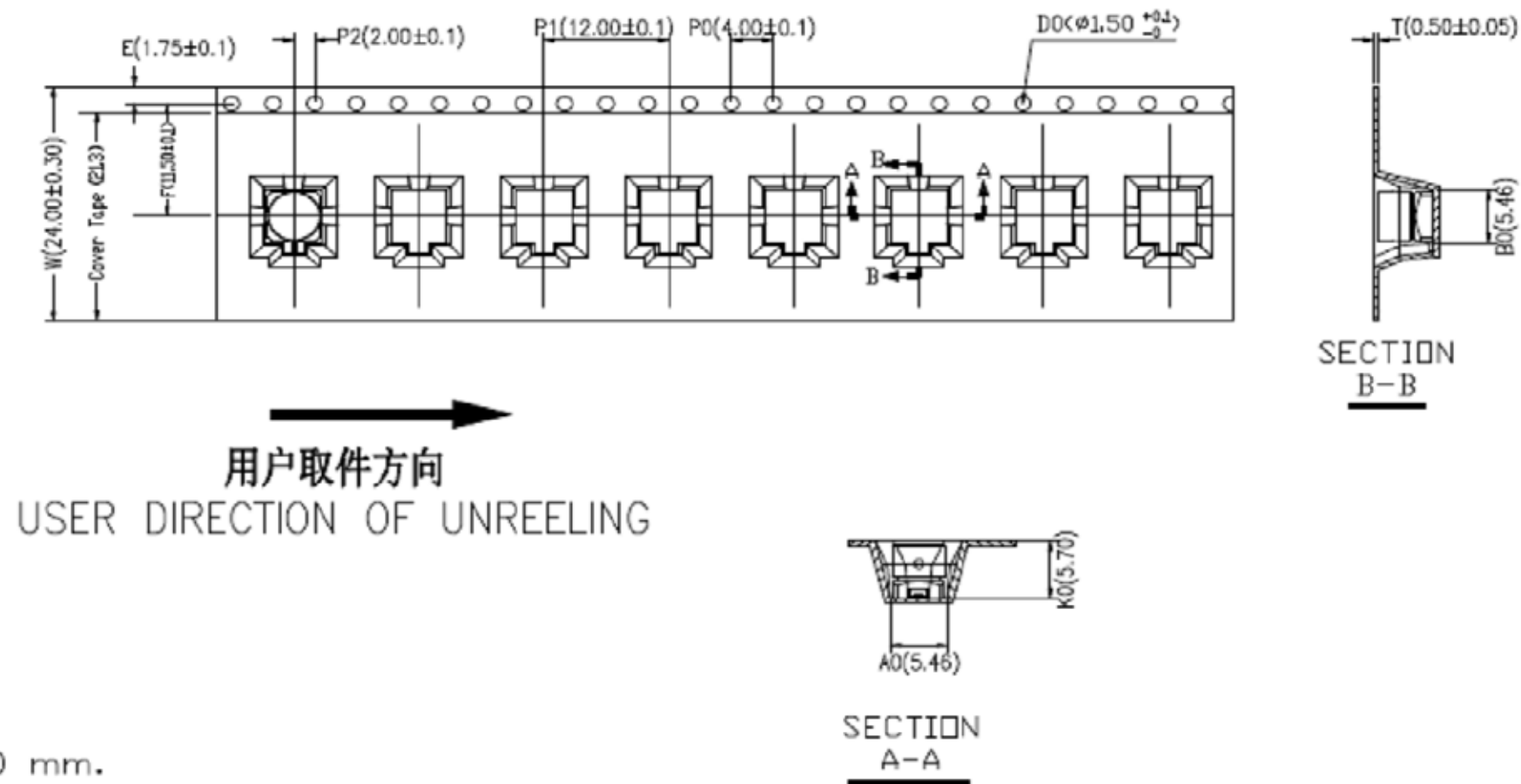
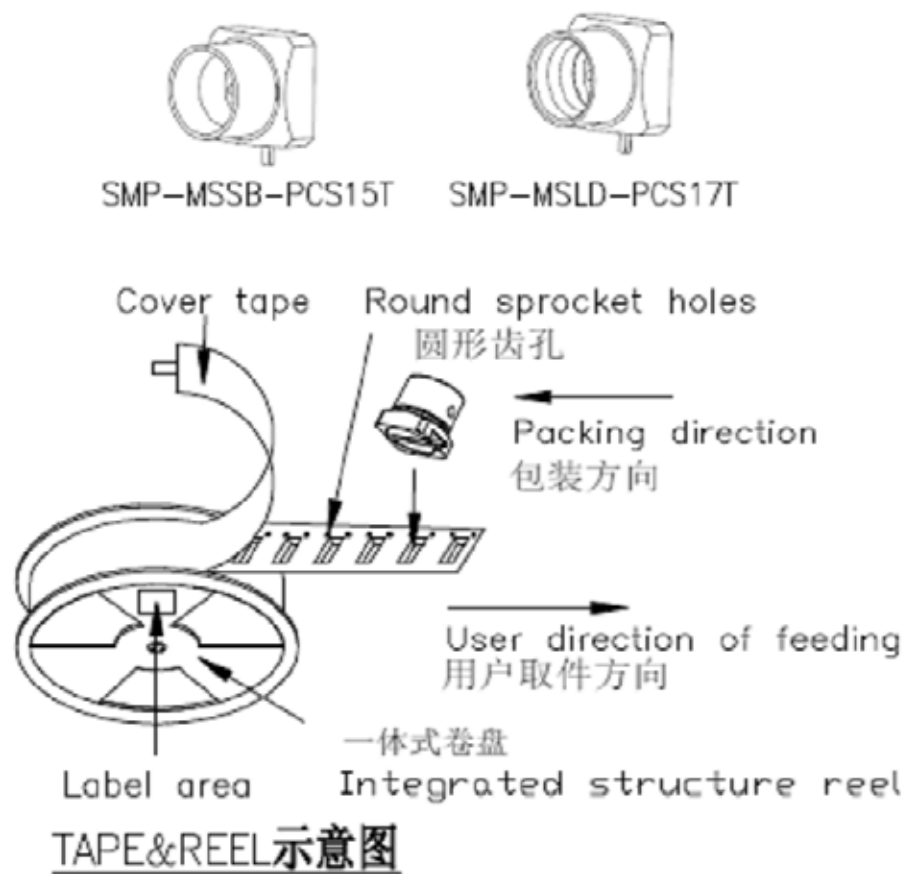
INTERFACE PER
MIL-STD-348
SERIES: SMP JACK
LIMITED DETENT



CUSTOMER OUTLINE DRAWING

ALL OTHER SHEETS ARE FOR INTERNAL USE ONLY

UNLESS OTHERWISE SPECIFIED, DIMENSIONS ARE IN METRIC AND TOLERANCES ARE: <0.5mm 0.5 - 6mm 6 - 30mm 30 - 120mm ANGLES ± 0.05mm ±0.1mm ±0.2mm ± 0.3mm ±1°	MATERIAL	DRAWN STAR	DATE 13-Jun-18	TITLE SMP STR JACK PCB RECEPTACLE LIMITED DETENT SURFACE MOUNT		Amphenol RF	
	-	ENGINEER SUNDE	DATE 13-Jun-18			www.amphenolrf.com	
	REFERENCE EAR # 8016 AND SMP-MSLD-PCS-5T	APPROVED S.HSIEH	DATE 13-Jun-18			DRAWING NO. SMP-MSLD-PCS17T	
	CONFIGURATION LEVEL: In Work	CAD FILE	SCALE: 21.0:1.0		SHEET 2 OF 3	ITEM NO. SMP-MSLD-PCS17T	
	FINISH		DWG SIZE B		REV A	PART NO. SMP-MSLD-PCS17T	
NOTICE - These drawings, specifications, or other data (1) are, and remain the property of Amphenol corp. (2) must be returned upon request; and (3) are confidential and not to be disclosed to any person other than those to whom they are given by Amphenol Corp. the furnishing of these drawings, specifications, or other data by Amphenol Corp., or to any other person to anyone for any purpose is not to be regarded by implication or otherwise in any manner licensing, granting rights to permitting such holder or any other person to manufacture, use or sell any product, process or design, patented or otherwise, that may in any way be related to or disclosed by said drawings, specifications, or other data.							



- NOTES:
- 10 sprocket holes pitch cumulative tolerance ± 0.20 mm.
 - Carrier camber not to exceed 1 mm in 250 mm.
 - A0 and B0 measured on a plane 0.3 mm above the bottom of the pocket.
 - K0 measured from a plane on the inside bottom of the pocket to the top surface of the carrier.
 - All dimensions meet EIA-481-D requirements.
 - Material: Black PS (RoHS Compliant)
 - Thickness: 0.50 ± 0.05 mm.
 - Packing length per 13" reel: 10.56 Meters.
 - Component loader per 13" reel: 800 pcs.

注:未注公差為 ± 0.10

NOTE: ALL TOLERANCES ARE: ± 0.10 , EXCEPT WHERE NOTED

ITEM	W	A ₀	A ₁	B ₀	B ₁	K ₀	K ₁	P ₁	F	E	D ₀	P ₀	P ₂	T
DIM	24.00±0.30	5.46±0.10		5.46±0.10		5.70±0.10		12.00±0.10	11.50±0.10	1.75±0.10	1.50 ^{+0.10} _{-0.00}	4.00±0.10	2.00±0.10	0.50±0.05

UNLESS OTHERWISE SPECIFIED, DIMENSIONS ARE IN METRIC AND TOLERANCES ARE: <0.5mm 0.5 - 6mm 6 - 30mm 30 - 120mm ANGLES ± 0.05mm ±0.1mm ±0.2mm ± 0.3mm ±1° NOTICE - These drawings, specifications, or other data (1) are, and remain the property of Amphenol corp. (2) must be returned upon request; and (3) are confidential and not to be disclosed to any person other than those to whom they are given by Amphenol Corp. the furnishing of these drawings, specifications, or other data by Amphenol Corp., or to any other person to anyone for any purpose is not to be regarded by implication or otherwise in any manner licensing, granting rights to permitting such holder or any other person to manufacture, use or sell any product, process or design, patented or otherwise, that may in any way be related to or disclosed by said drawings, specifications, or other data.	MATERIAL	DRAWN	DATE	TITLE SMP STR JACK PCB RECEPTACLE LIMITED DETENT SURFACE MOUNT		Amphenol RF www.amphenolrf.com		
	-	STAR	13-Jun-18					
		ENGINEER	DATE					
			SUNDE	13-Jun-18				
		REFERENCE EAR # 8016 AND SMP-MSLD-PCS-5T	APPROVED	DATE	SCALE: 21.0:1.0 SHEET 3 OF 3		DRAWING NO. SMP-MSLD-PCS17T	
	CONFIGURATION LEVEL: In Work	S.HSIEH	13-Jun-18			ITEM NO. SMP-MSLD-PCS17T		
	FINISH	CAD FILE		DWG SIZE B		REV A	PART NO. SMP-MSLD-PCS17T	

Mouser Electronics

Authorized Distributor

Click to View Pricing, Inventory, Delivery & Lifecycle Information:

[Amphenol:](#)

[SMP-MSLD-PCS17T](#)