
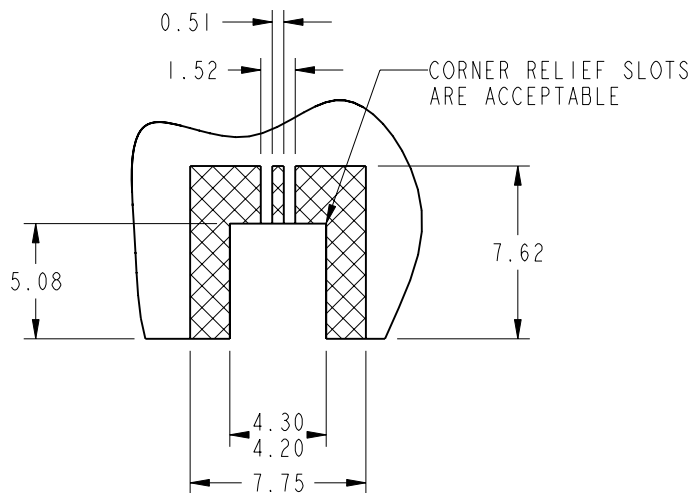
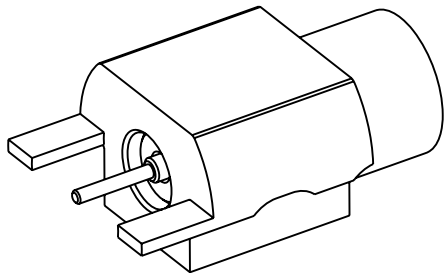
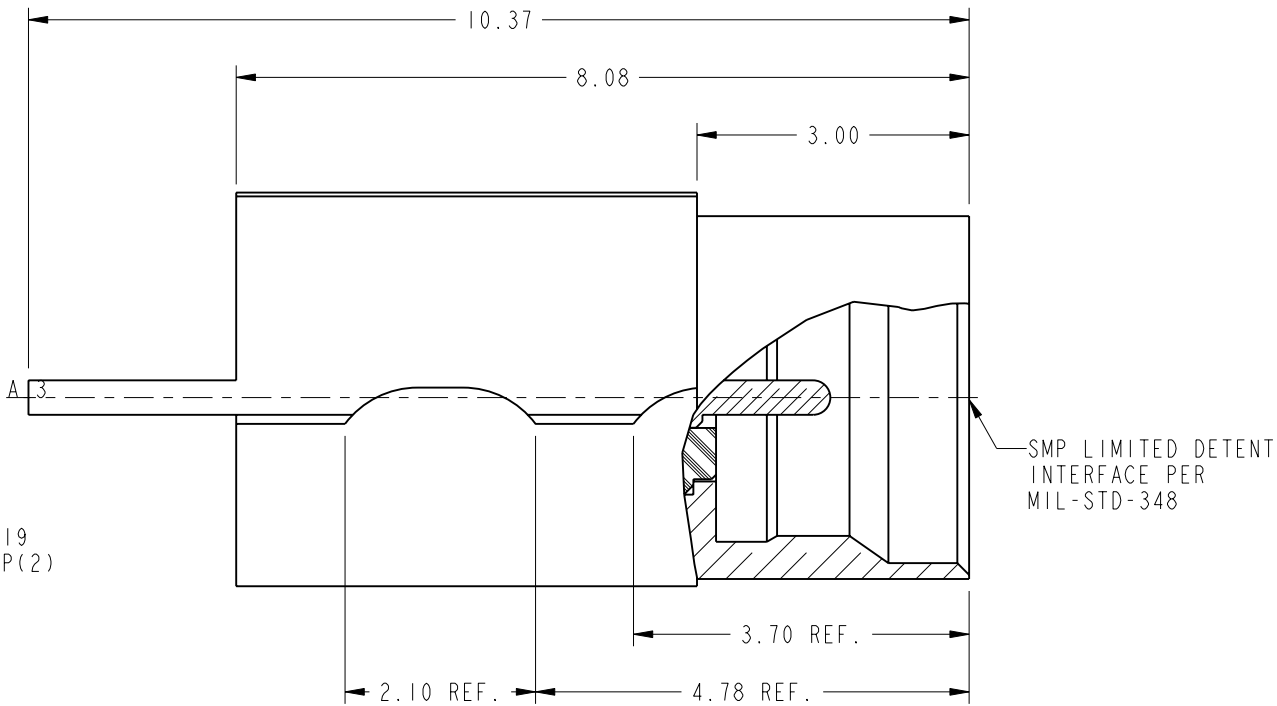
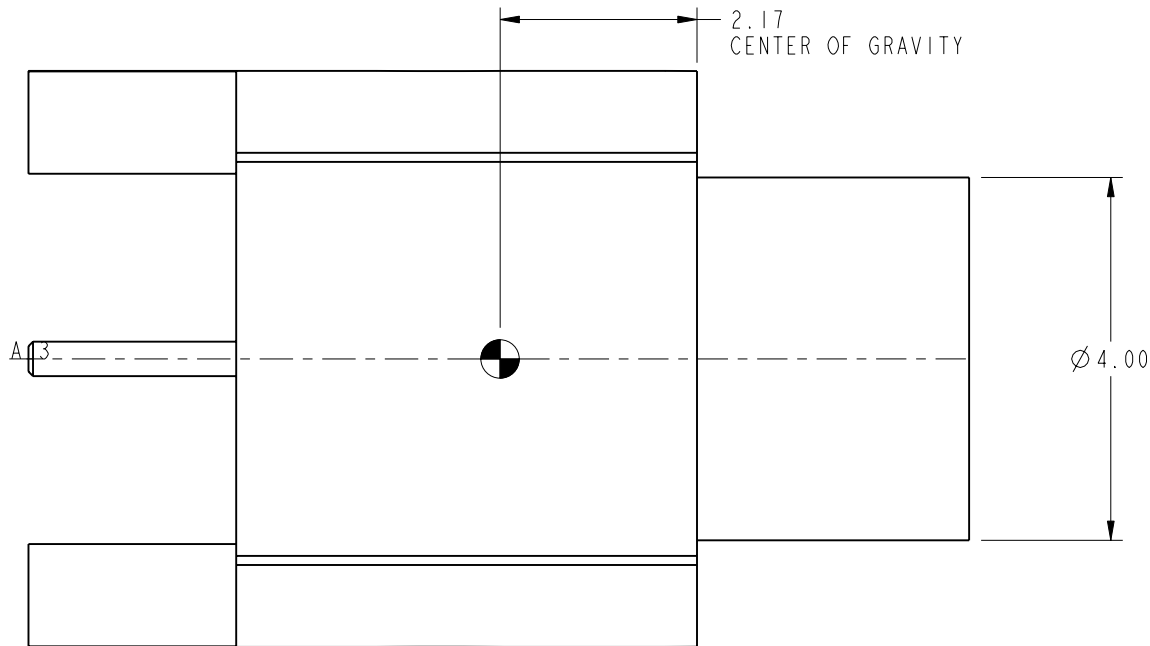
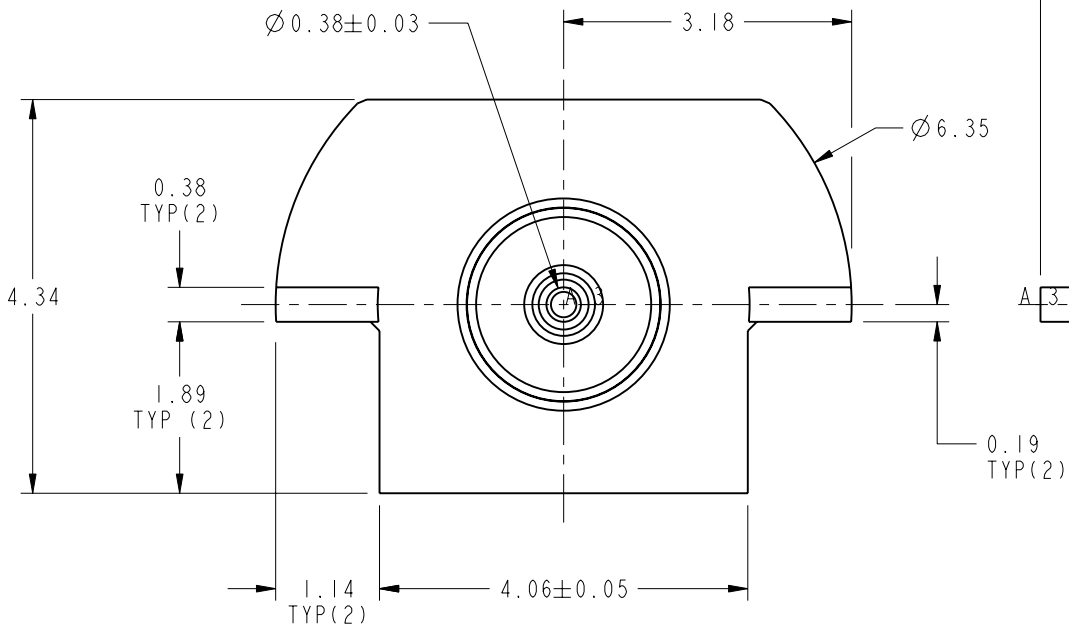
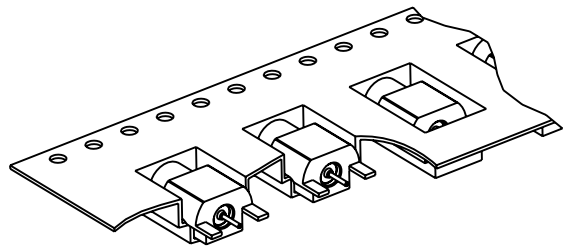
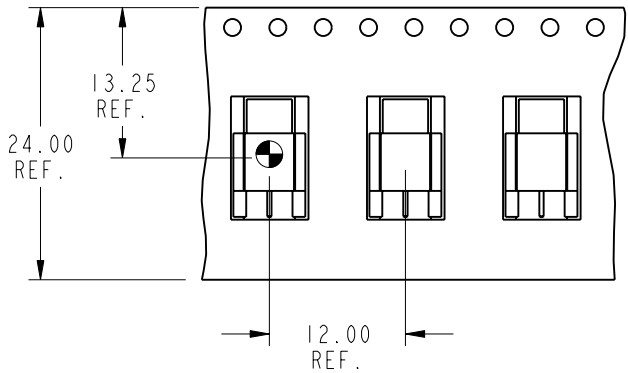


NOTES:

1. MATERIALS AND FINISHES:  
BODY - BERYLLIUM COPPER, GOLD PLATING  
CONTACT - BERYLLIUM COPPER, GOLD PLATING  
INSULATOR - PTFE
2. ELECTRICAL:  
A. IMPEDANCE: 50 OHM  
B. FREQUENCY RANGE: DC - 18 GHz  
C. VSWR: 1.15 FROM DC TO 6 GHz  
1.25 FROM 6 GHz TO 18 GHz  
D. DIELECTRIC WITHSTANDING VOLTAGE: 500 VRMS MIN
3. MECHANICAL:  
A. TEMPERATURE RANGE: -65° C TO +165° C  
B. DURABILITY: 500 CYCLES MIN.
4. : THE CENTER OF GRAVITY.
5. PACKAGING:  
A. TAPE AND REEL: 13" REEL. 1000 PCS PER REEL  
B. TAPE AND REEL TO BE MARKED  
"AMPHENOL RF, SMP-MSLD-PCE-3, AND DATE CODE (YYWW)"



**RECOMMENDED PCB  
CUT OUT AND TRACE**



**CUSTOMER OUTLINE DRAWING**

ALL OTHER SHEETS ARE FOR INTERNAL USE ONLY

UNLESS OTHERWISE SPECIFIED, DIMENSIONS ARE IN METRIC AND TOLERANCES ARE:  
<0.5mm ±0.05mm 0.5 - 6mm ±0.1mm 6 - 30mm ±0.2mm 30 - 120mm ±0.3mm ANGLES ±1°

NOTICE - These drawings, specifications, or other data (1) are, and remain the property of Amphenol corp. (2) must be returned upon request; and (3) are confidential and not to be disclosed to any person other than those to whom they are given by Amphenol Corp. the furnishing of these drawings, specifications, or other data by Amphenol Corp., or to any other person to anyone for any purpose is not to be regarded by implication or otherwise in any manner licensing, granting rights to permitting such holder or any other person to manufacture, use or sell any product, process or design, patented or otherwise, that may in any way be related to or disclosed by said drawings, specifications, or other data.

MATERIAL

SEE NOTES

REFERENCE

EAR #6036

FINISH

DRAWN  
R. MAO

ENGINEER  
T. SMITH

APPROVED  
S. HSIEH

CAD FILE

DATE  
10-Mar-14

DATE  
15-Oct-13

DATE  
19-Mar-14

TITLE  
ASSEMBLY, SMP JACK  
LIMITED DETENT  
EDGE MOUNT

SCALE: 12.0:1.0 SHEET 2 OF 2

DWG SIZE  
B

REV  
A

Amphenol RF

www.amphenolrf.com

DRAWING NO. SMP-MSLD-PCE-3

ITEM NO. SMP-MSLD-PCE-3

PART NO. SMP-MSLD-PCE-3

# Mouser Electronics

Authorized Distributor

Click to View Pricing, Inventory, Delivery & Lifecycle Information:

[Amphenol:](#)

[SMP-MSLD-PCE-3](#)