

NOTES:

1. MATERIALS AND FINISHES:

BODY - BRASS, GOLD PLATING, OVER HIGH PHOSPHOROUS NICKEL
CONTACT - BRASS, GOLD PLATING, OVER HIGH PHOSPHOROUS NICKEL
INSULATOR - PTFE

2. ELECTRICAL:

A. IMPEDANCE: 50 OHM
B. FREQUENCY RANGE: DC - 12 GHz
C. VSWR: 1.15 MAX
D. DIELECTRIC WITHSTANDING VOLTAGE: 500 VRMS MIN

3. MECHANICAL:

A. TEMPERATURE RANGE: -65°C TO +165°C
B. DURABILITY: 500 CYCLES MIN.

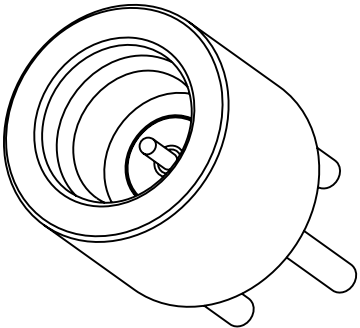
4. PACKAGING:

A. QUANTITY: SINGLE PACK
B. MARKING: BAG TO BE MARKED
"AMPHENOL RF, SMP-FS-SBPCT, AND DATE CODE"

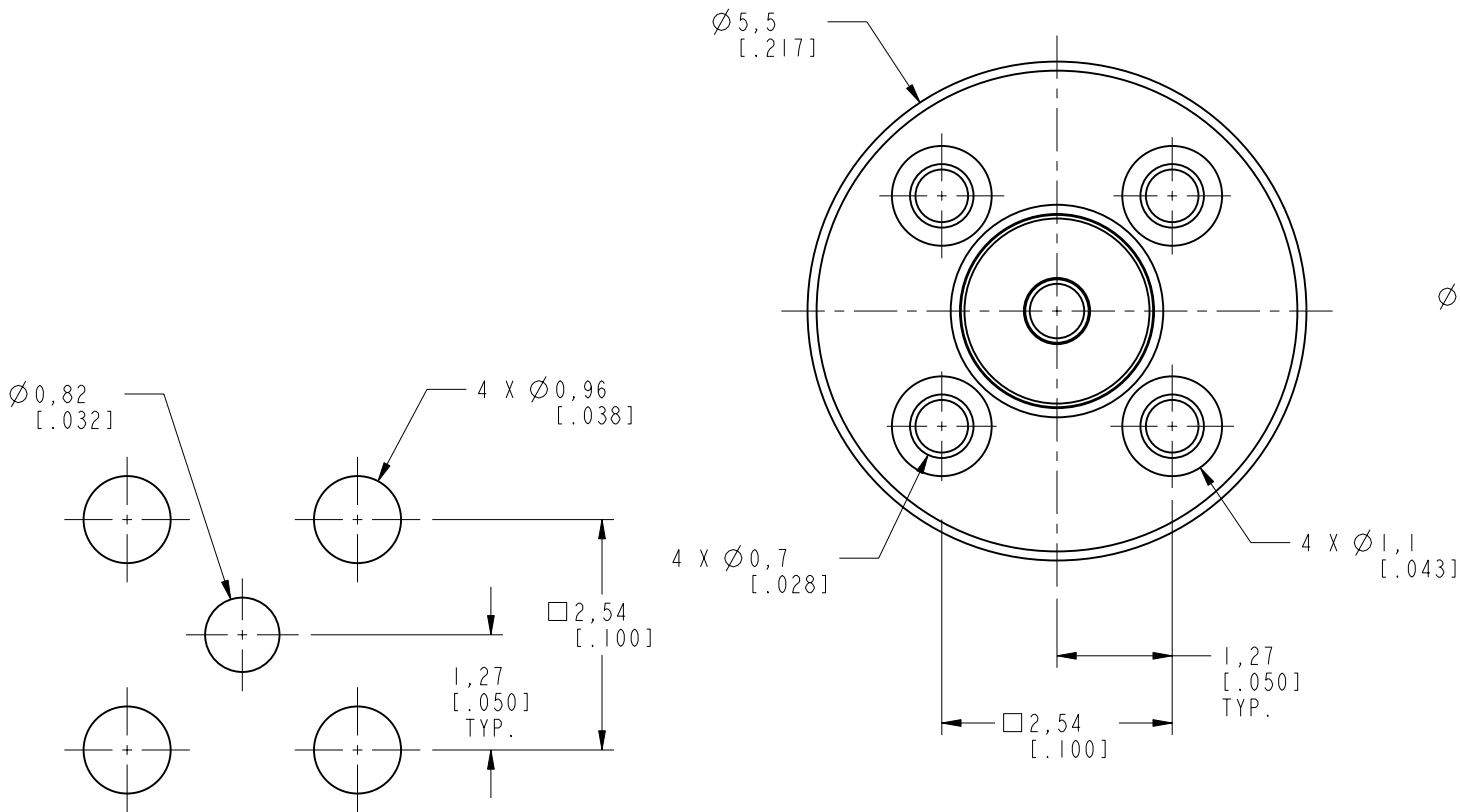
THIRD ANGLE PROJ. 

REVISIONS

| REV | DESCRIPTION | DATE | ECO | APPR |
|-----|-----------------|-----------|-------|------|
| A | RELEASED TO MFG | 13-Jan-17 | 47842 | NMV |



SCALE 6.000



SCALE 12.000
RECOMMENDED MOUNTING
HOLE DIMENSION

CUSTOMER OUTLINE DRAWING
ALL OTHER SHEETS ARE FOR INTERNAL USE ONLY

| | | | | | | |
|--|---|------------------------|-------------------|---|---------------------------------------|--------------------------|
| <div>UNLESS OTHERWISE SPECIFIED, DIMENSIONS ARE IN METRIC AND TOLERANCES ARE: <0.5mm 0.5 - 6mm 6 - 30mm 30 - 120mm ANGLES ± 0.05mm ±0.1mm ±0.2mm ± 0.3mm ±1°</div> <div>NOTICE - These drawings, specifications, or other data (1) are, and remain the property of Amphenol corp. (2) must be returned upon request; and (3) are confidential and not to be disclosed to any person other than those to whom they are given by Amphenol Corp. the furnishing of these drawings, specifications, or other data by Amphenol Corp., or to any other person to anyone for any purpose is not to be regarded by implication or otherwise in any manner licensing, granting rights to permitting such holder or any other person to manufacture, use or sell any product, process or design, patented or otherwise, that may in any way be related to or disclosed by said drawings, specifications, or other data.</div> | MATERIAL SEE NOTES | DRAWN M. ZHANG | DATE 13-Jan-17 | TITLE ASSEMBLY SMP, JACK SMOOTH BORE | Amphenol RF www.amphenolrf.com | |
| | | ENGINEER NISCHIT MV | DATE 03-Nov-09 | | | |
| | REFERENCE EAR # 2983 AND 615X-2333-200 | APPROVED S. HSIEH | DATE 18-Jan-17 | SCALE: 12.0:1.0 | SHEET 2 OF 2 | DRAWING NO. SMP-FS-SBPCT |
| | CONFIGURATION LEVEL: In Work | CAD FILE | DWG SIZE B | REV A | ITEM NO. SMP-FS-SBPCT | |
| | FINISH | | | | PART NO. SMP-FS-SBPCT | |

Mouser Electronics

Authorized Distributor

Click to View Pricing, Inventory, Delivery & Lifecycle Information:

[Amphenol:](#)

[SMP-FS-SBPCT](#)