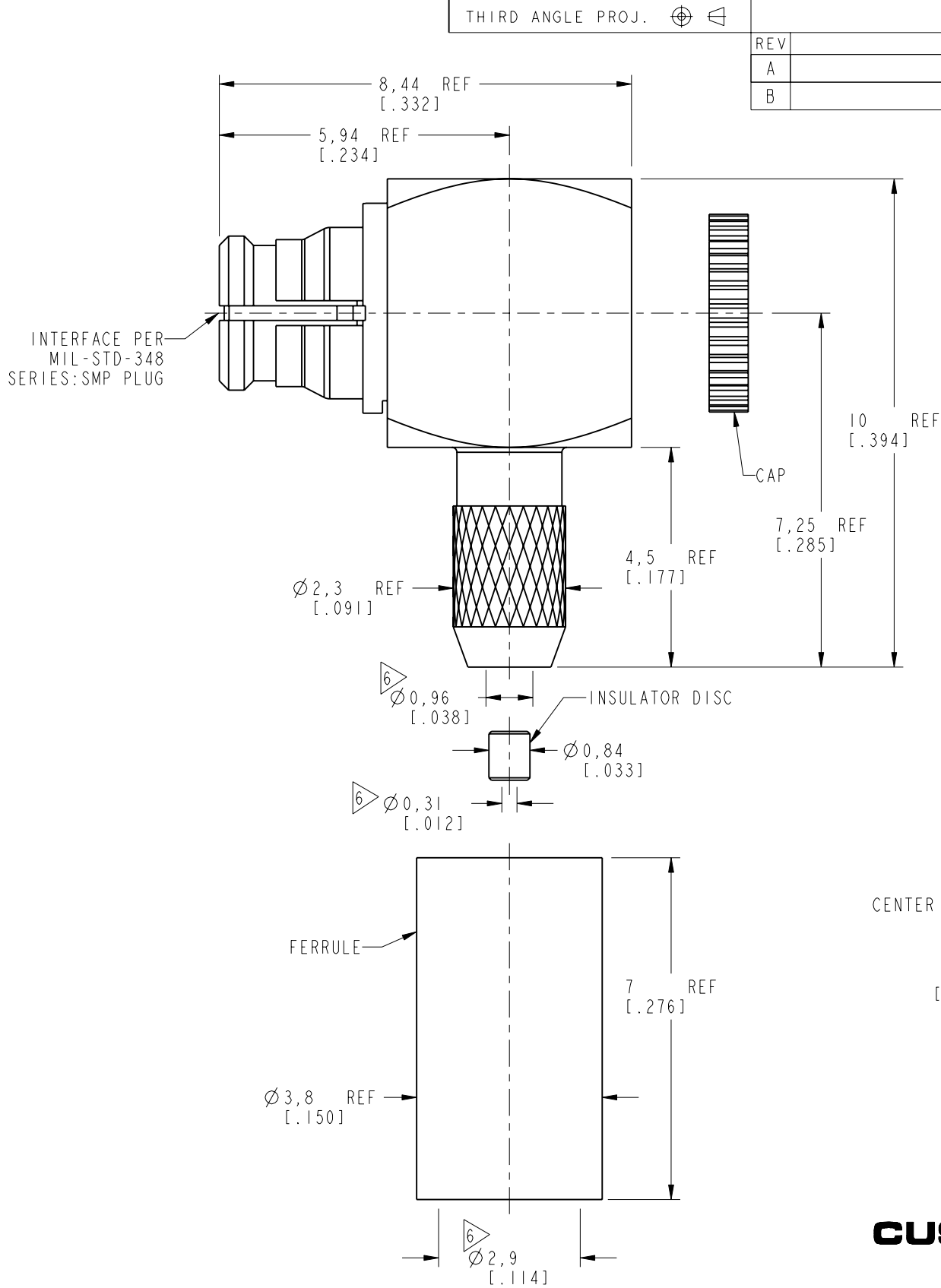


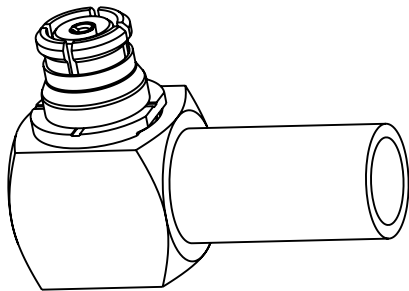
NOTES:

1. MATERIALS AND FINISHES:
BODY & CONTACT - BeCu, GOLD PLATING
BODY-REAR & CAP - BRASS, GOLD PLATING
RETAINING RING - BeCu, NICKEL PLATING
FERRULE - COPPER, NICKEL PLATING
INSULATOR - PTFE, NATURAL
INSULATOR DISC - PEEK, NATURAL
2. ELECTRICAL:
A. IMPEDANCE: 50 OHM
B. FREQUENCY RANGE: DC - 26.5 GHz.
C. VSWR (RETURN LOSS): 1.22 MAX. (-20 dB MIN.) @ DC - 3 GHz
1.43 MAX. (-15 dB MIN.) @ 3 - 12.4 GHz
D. DIELECTRIC WITHSTANDING VOLTAGE: 500 VRMS, MIN.
3. MECHANICAL:
A. DURABILITY: 100 CYCLES MIN. WHEN MATED FULL DETENT JACK
500 CYCLES MIN. WHEN MATED LIMITED DETENT JACK
1000 CYCLES MIN. WHEN MATED A SMOOTH BORE JACK
B. TEMPERATURE RANGE: -65°C TO 165°C
4. PACKAGING:
A. QUANTITY: SINGLE PACK
B. MARKING: BAG TO BE MARKED
"AMPHENOL RF, SMP-FR-C19 & DATE CODE"
5. CABLE ASSEMBLY INSTRUCTIONS:
A. TRIM CABLE AS SHOWN.
B. SLIDE FERRULE AND INSULATOR DISC ONTO CABLE.
C. SOLDER CABLE CENTER CONDUCTOR TO CONTACT.
D. CRIMP FERRULE OVER THE BRAID WITH .128" HEX.
E. PRESS CAP FLUSH.

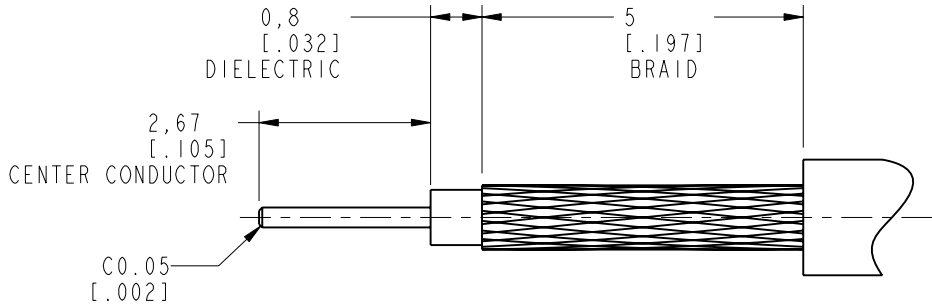
6 SHOWS CABLE ENTRY DIMENSIONS.



REVISIONS				
REV	DESCRIPTION	DATE	ECO	APPR
A	RELEASE TO MFG.	12-Nov-18	09542	EH
B	UPDATED NOTE 3	07-May-19	11421	SH



SCALE 4.000



RECOMMENDED CABLE
STRIPPING DIMENSIONS

CUSTOMER OUTLINE DRAWING
ALL OTHER SHEETS ARE FOR INTERNAL USE ONLY

UNLESS OTHERWISE SPECIFIED, DIMENSIONS ARE IN METRIC AND TOLERANCES ARE: <0.5mm 0.5 - 6mm 6 - 30mm 30 - 120mm ANGLES ± 0.05mm ±0.1mm ±0.2mm ± 0.3mm ±1° NOTICE - These drawings, specifications, or other data (1) are, and remain the property of Amphenol corp. (2) must be returned upon request; and (3) are confidential and not to be disclosed to any person other than those to whom they are given by Amphenol Corp. the furnishing of these drawings, specifications, or other data by Amphenol Corp., or to any other person to anyone for any purpose is not to be regarded by implication or otherwise in any manner licensing, granting rights to permitting such holder or any other person to manufacture, use or sell any product, process or design, patented or otherwise, that may in any way be related to or disclosed by said drawings, specifications, or other data.	MATERIAL SEE NOTES	DRAWN M. ZHANG	DATE 07-May-19	TITLE SMP RA PLUG WITH ROCK RING FOR RG 178 CABLE	Amphenol RF www.amphenolrf.com	
		ENGINEER VIJI K	DATE 04-Dec-17			
	REFERENCE EAR# 8025 AND SMP-FR-C08-1	APPROVED S. HSIEH	DATE 07-May-19		SCALE: 8.5:1.0	SHEET 2 OF 2
	CONFIGURATION LEVEL: In Work	CAD FILE		DWG SIZE B	REV B	ITEM NO. SMP-FR-C19
	FINISH					PART NO. SMP-FR-C19

Mouser Electronics

Authorized Distributor

Click to View Pricing, Inventory, Delivery & Lifecycle Information:

[Amphenol:](#)

[SMP-FR-C19](#)