

NOTES:

I. MATERIALS AND FINISHES:

BODY - BRASS, GOLD PL. .000005"[0.127um] THICK OVER PHOSPHORUS CONTENT 9%~13% ELECTROLESS
NICKEL PL. .000100"[2.5um] MIN THICK OVER COPPER PL. .000025"[0.64um] MIN. THICK

CONTACT- BRASS, GOLD PL. .000008"[0.2um] THICK OVER PHOSPHORUS CONTENT 9%~13% ELECTROLESS
NICKEL PL. .000100"[2.5um] MIN THICK OVER COPPER PL. .000025"[0.64um] MIN. THICK

THIRD ANGLE PROJ.

REVISIONS

REV	DESCRIPTION	DATE	ECO	APPR
A	RELEASE TO MFG.	18-Jun-15		AY
B	TITLE WAS CHANGED, ADDED PART NO. PSMP-MSLD-PCTIR ADDED RECOMMENDED MOUNTING HOLE	03-Dec-15	50842	SW
C	PLATING OF BODY WAS CHANGED\RD-DMI6042101TI	5/16/16	00781	SH

1. MATERIALS AND FINISHES:

BODY - BRASS, GOLD PL. .000005"[0.127um] THICK OVER PHOSPHORUS CONTENT 9%~13% ELECTROLESS
NICKEL PL. .000100"[2.5um] MIN THICK OVER COPPER PL..000025"[0.64um]MIN. THICK
CONTACT- BRASS, GOLD PL. .000008"[0.2um] THICK OVER PHOSPHORUS CONTENT 9%~13% ELECTROLESS
NICKEL PL. .000100"[2.5um] MIN THICK OVER COPPER PL..000025"[0.64um] MIN. THICK.
INSULATOR - LCP

2. ELECTRICAL:

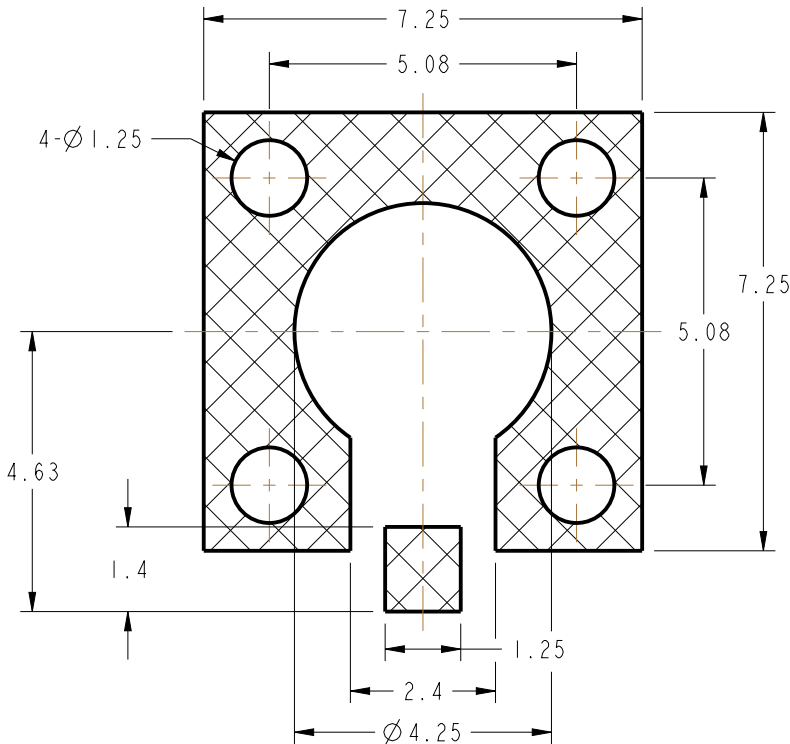
A. IMPEDANCE: 50 OHM
B. FREQUENCY RANGE: DC-10 GHz
C. RETURN LOSS: 30 dB MIN.@ DC-4 GHz
25 dB MIN.@ 4-6 GHz

D. INSERTION LOSS: 0.03X√f(GHz) dB MAX.

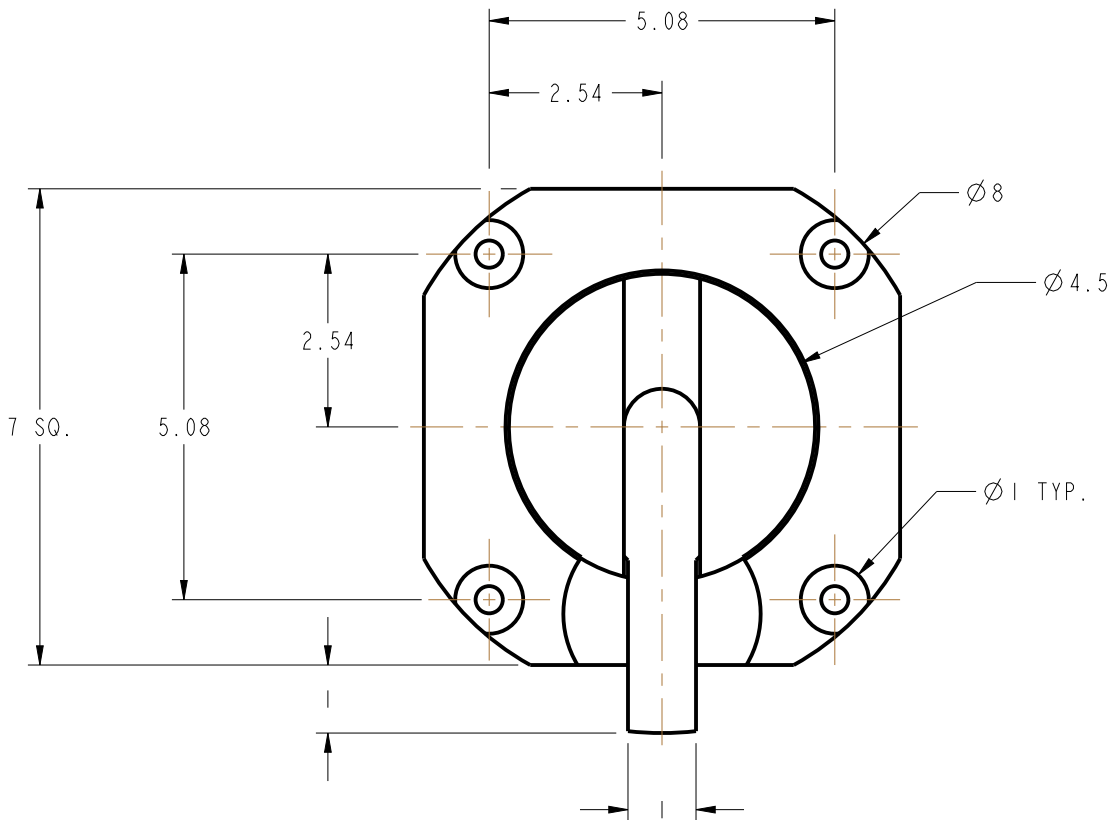
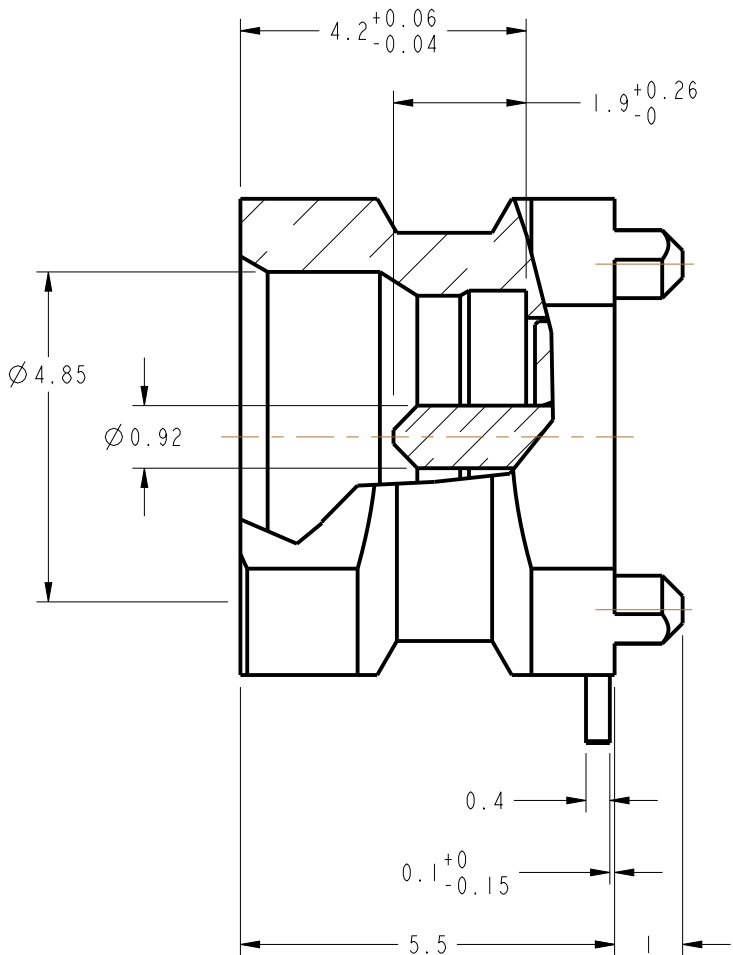
E. INSULATION RESISTANCE: 5 GΩ MIN.
F. DIELECTRIC WITHSTANDING VOLTAGE: 1000 VRMS MIN.
G. POWER HANDLING: 200 W MAX. @ 2.2 GHz AT 20°C, SEA LEVEL
H. INTERMODULATION(3rd ORDER): 160 dBc MIN. @ (2X43 dBm)

3. MECHANICAL:

A. MATING CYCLES: 100 MIN.
B. ENGAGEMENT FORCE: 45 N MAX
C. DISENGAGEMENT FORCE: 15 N MIN
D. INNER CONTACT RETENTION FORCE: 7 N MIN
E. TEMPERATURE RANGE: -65° C TO 165° C



RECOMMENDED MOUNTING HOLE



SCALE 3.000

CUSTOMER OUTLINE DRAWING
ALL OTHER SHEETS ARE FOR INTERNAL USE ONLY

UNLESS OTHERWISE SPECIFIED, DIMENSIONS ARE IN METRIC AND TOLERANCES ARE: <0.5mm ± 0.05mm 0.5 - 6mm ± 0.1mm 6 - 30mm ± 0.2mm 30 - 120mm ± 0.3mm ANGLES ± 1°	MATERIAL	DRAWN TANGOR	DATE 26-Apr-16	TITLE POWER-SMP STRAIGHT MALE FOR PCB LIMITED DETENT		Amphenol RF	
		ENGINEER RICKSON	DATE 26-Apr-16			www.amphenolrf.com	
		REFERENCE EAR 6577 PSMPI251D1-001-8GPAP8GPA-50 119S103-40ML5	APPROVED S.HSIEH	DATE 26-Apr-16	SCALE: 6.0:1.0	SHEET 2 OF 2	DRAWING NO.PSMP1251A2-8GPAP8GPA-50
		FINISH	CAD FILE		DWG SIZE B	REV C	ITEM NO. 671251ABR002C5F PART NO. PSMP-MSLD-PCTIR

Mouser Electronics

Authorized Distributor

Click to View Pricing, Inventory, Delivery & Lifecycle Information:

[Amphenol:](#)

[PSMP-MSLD-PCT1R](#)