

NOTES:

THIRD ANGLE PROJ.

REVISIONS

1. MATERIALS AND FINISHES:

BODY - BRASS, GOLD PL. .000008"[0.2um] THICK OVER PHOSPHORUS CONTENT 9%~13% ELECTROLESS  
NICKEL PL. .000100"[2.5um] THICK OVER MIN PL..000025"[0.64um] COPPER.  
CONTACT - BRASS, GOLD PL. .000008"[0.2um] THICK OVER PHOSPHORUS CONTENT 9%~13% ELECTROLESS  
NICKEL PL. .000100"[2.5um] THICK OVER MIN PL..000025"[0.64um] COPPER.  
INSULATOR - PEEK

2. ELECTRICAL:

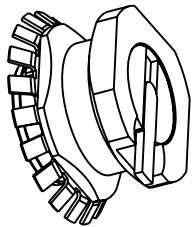
- A. IMPEDANCE:50 OHM
- B. FREQUENCY RANGE: DC-10 GHz
- C. RETURN LOSS: 30 dB MIN.@ DC-4 GHz  
25 dB MIN.@ 4-6 GHz
- D. INSERTION LOSS:  $0.03X\sqrt{f(\text{GHz})}$  dB MAX.
- E. INSULATION RESISTANCE:5 GΩ MIN.
- F. DIELECTRIC WITHSTANDING VOLTAGE: 1000 VRMS MIN.
- G. POWER HANDLING:200 W MAX.@ 2.2 GHz AT 20°C, SEA LEVEL,VSWR 1.0
- H. INTERMODULATION(3rd order):160 dBc MIN.@ (2X43dBm)

3. MECHANICAL:

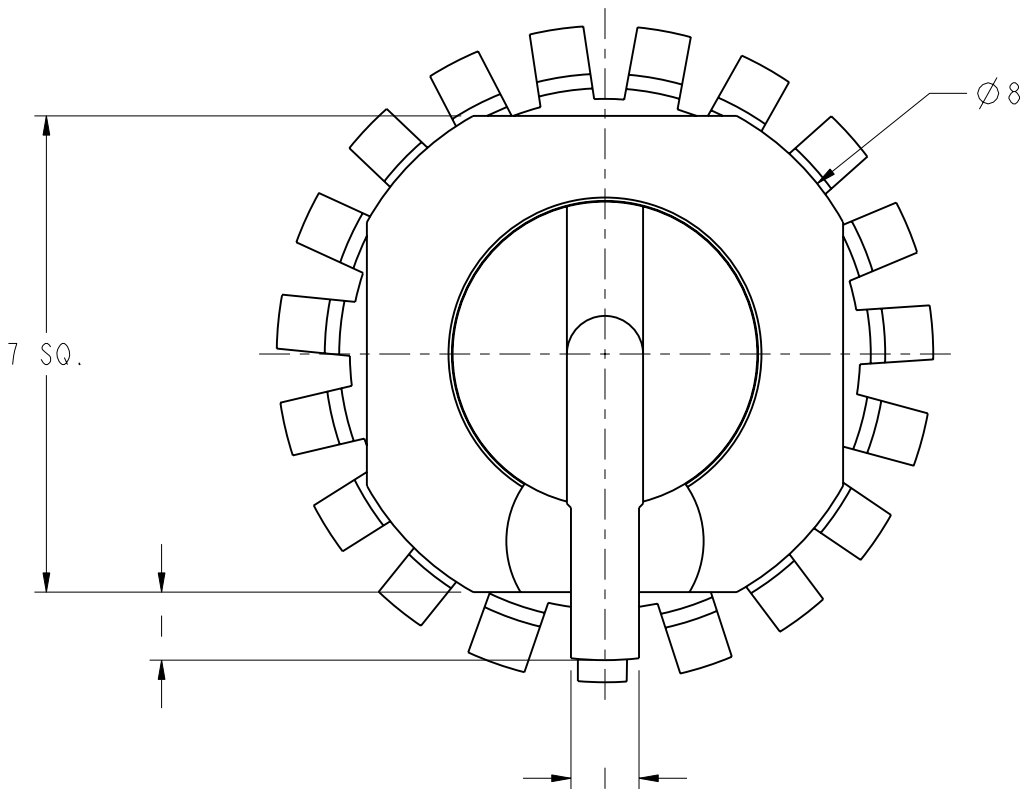
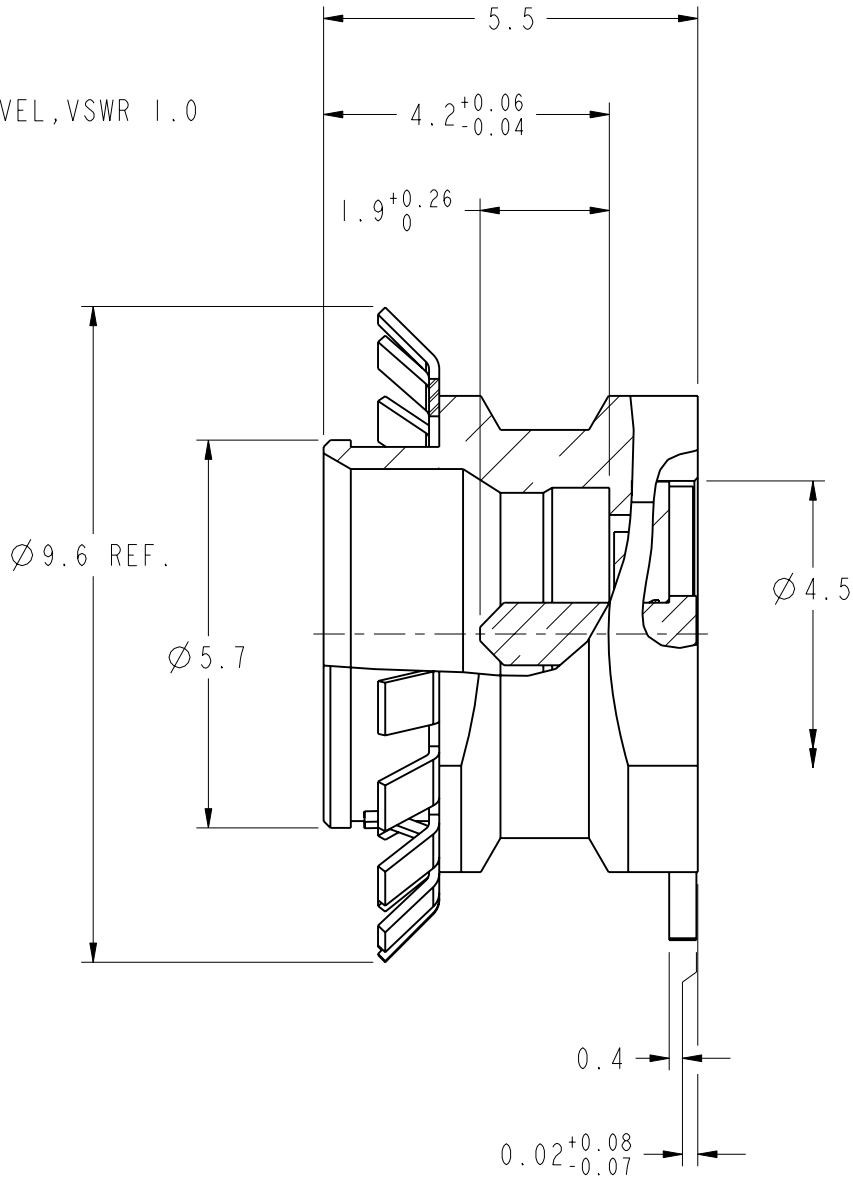
- A. MATING CYCLES:100 MIN.
- B. ENGAGEMENT FORCE: 10 N MAX
- C. DISENGAGEMENT FORCE: 2.2 N MIN
- D. INNER CONTACT RETENTION FORCE: 7 N MIN
- E. TEMPERATURE RANGE: -65° C TO 165° C

4. ALLOWABLE COMPRESSION OF EMI RING: 0.4 MM MAX.

5. ALL MATERIALS MUST BE "RoHS" COMPLIANT.



SCALE 3.000



**CUSTOMER OUTLINE DRAWING**  
ALL OTHER SHEETS ARE FOR INTERNAL USE ONLY

UNLESS OTHERWISE SPECIFIED, DIMENSIONS ARE IN METRIC AND TOLERANCES ARE: <0.5mm      0.5 - 6mm      6 - 30mm      30 - 120mm      ANGLES ± 0.05mm    ±0.1mm      ±0.2mm    ± 0.3mm      ±1°  NOTICE - These drawings, specifications, or other data (1) are, and remain the property of Amphenol corp. (2) must be returned upon request; and (3) are confidential and not to be disclosed to any person other than those to whom they are given by Amphenol Corp. the furnishing of these drawings, specifications, or other data by Amphenol Corp., or to any other person to anyone for any purpose is not to be regarded by implication or otherwise in any manner licensing, granting rights to permitting such holder or any other person to manufacture, use or sell any product, process or design, patented or otherwise, that may in any way be related to or disclosed by said drawings, specifications, or other data.	MATERIAL	DRAWN ALLEN	DATE 09-Dec-15	TITLE POWER-SMP STRAIGHT MALE FOR PCB LIMITED DETENT SCALE: 10.0:1.0   SHEET 2 OF 2		Amphenol RF Danbury CT USA, Tainan, Taiwan, Shenzhen, China www.amphenolrf.com	
		ENGINEER RICKSON	DATE 09-Dec-15			DRAWING NO. PSMP1251DI-002-8GPAP8GPA-50	
	REFERENCE EAR 06666 119S106-40MLS	APPROVED SCOTT	DATE 10-Dec-15			ITEM NO. 671251ABTA12C5F	
		CAD FILE			DWG SIZE B	REV A	PART NO. PSMP-MSLD-PCSEM
	FINISH	I:\PSMP\PSMP1251DI-002-8GPAP8GPA-50					

# Mouser Electronics

Authorized Distributor

Click to View Pricing, Inventory, Delivery & Lifecycle Information:

[Amphenol:](#)

[PSMP-MSLD-PCSEM](#)