

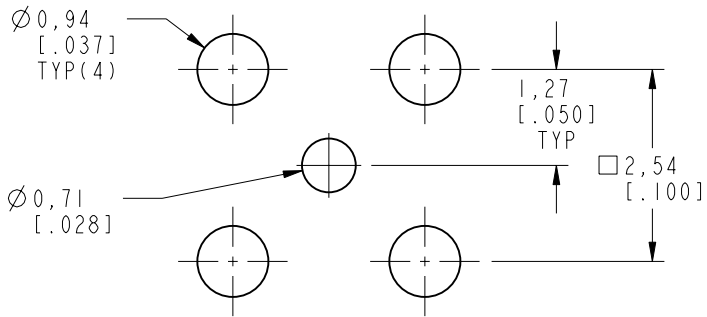
NOTES:

1. MATERIALS AND FINISHES:
BODY & CONTACT - BeCu, GOLD PLATING
INSULATOR - PTFE, NATURAL
2. ELECTRICAL:
A. IMPEDANCE: 50 OHM
B. FREQUENCY RANGE: DC - 40 GHz
C. VSWR: 1.15 MAX @ DC - 10 GHz
1.25 MAX @ 10 - 26.5 GHz
1.35 MAX @ 26.5 - 40 GHz
C. DIELECTRIC WITHSTANDING VOLTAGE: 335 VRMS, MIN.
3. MECHANICAL:
A. DURABILITY: 500 CYCLES MIN.
B. TEMPERATURE RANGE: -65°C TO +165°C
4. PACKAGING:
A. TRAY PACK: 50 PCS / TRAY
B. MARKING: TRAY TO BE MARKED
"AMPHENOL RF, 925-137J-51P, AND DATE CODE"

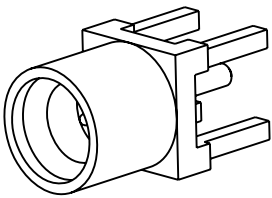
THIRD ANGLE PROJ.

REVISIONS

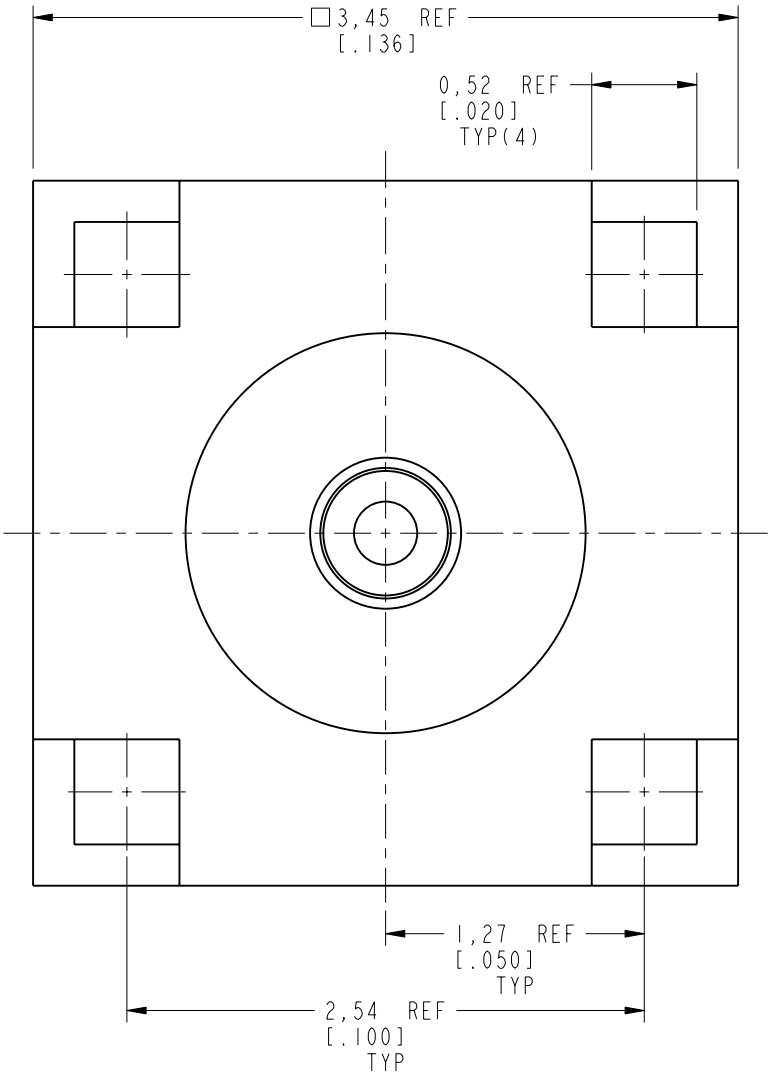
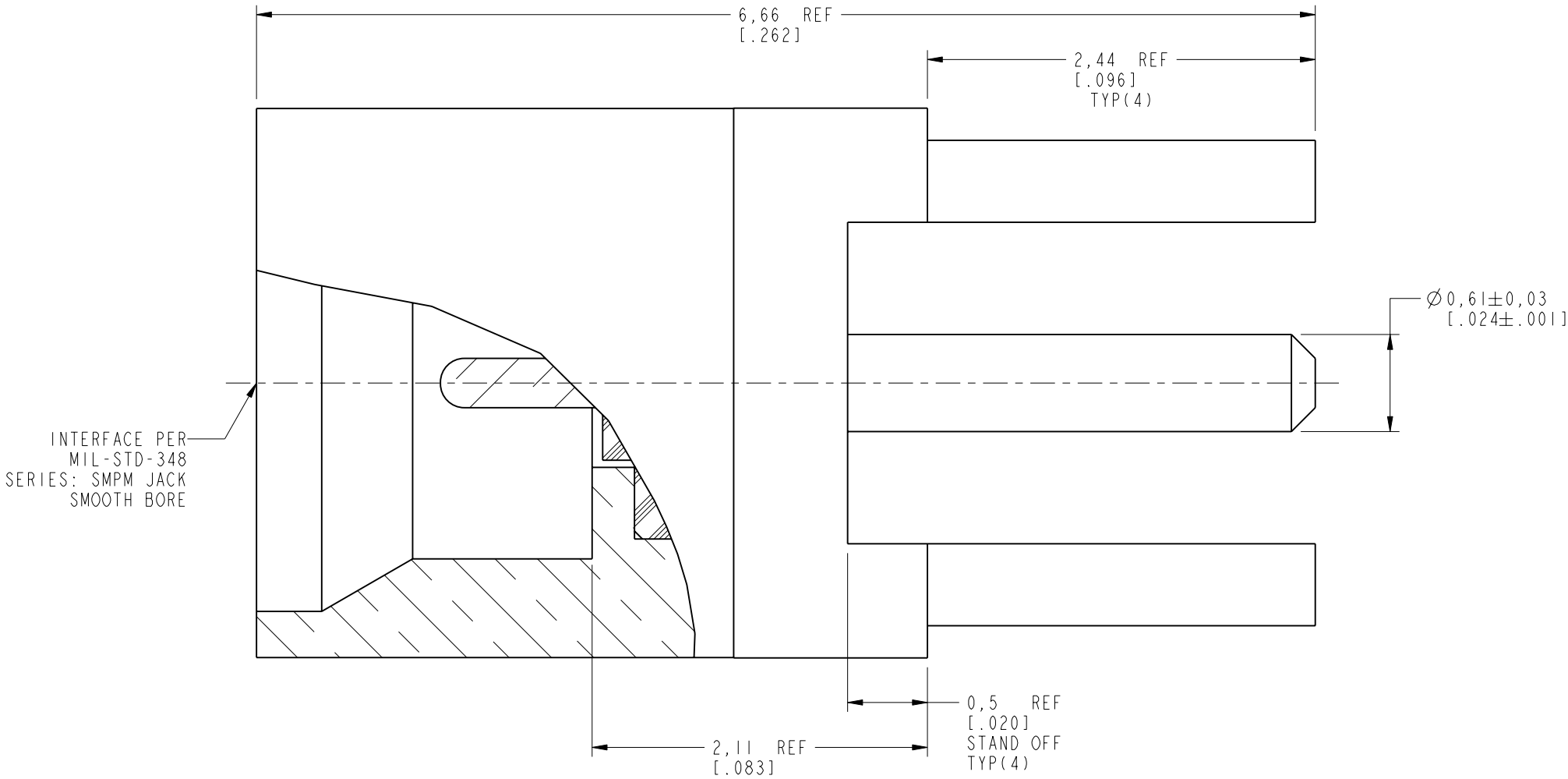
REV	DESCRIPTION	DATE	ECO	APPR
A	RELEASE TO MFG.	13-Jan-17	02722	RM



RECOMMENDED MOUNTING
HOLE DIMENSIONS



SCALE 5.000



CUSTOMER OUTLINE DRAWING
ALL OTHER SHEETS ARE FOR INTERNAL USE ONLY

UNLESS OTHERWISE SPECIFIED, DIMENSIONS ARE IN METRIC AND TOLERANCES ARE: <0.5mm ± 0.05mm 0.5 - 6mm ± 0.1mm 6 - 30mm ± 0.2mm 30 - 120mm ± 0.3mm ANGLES ±1° NOTICE - These drawings, specifications, or other data (1) are, and remain the property of Amphenol corp. (2) must be returned upon request; and (3) are confidential and not to be disclosed to any person other than those to whom they are given by Amphenol Corp. the furnishing of these drawings, specifications, or other data by Amphenol Corp., or to any other person to anyone for any purpose is not to be regarded by implication or otherwise in any manner licensing, granting rights to permitting such holder or any other person to manufacture, use or sell any product, process or design, patented or otherwise, that may in any way be related to or disclosed by said drawings, specifications, or other data.	MATERIAL SEE NOTES	DRAWN CLEMENT	DATE 15-Sep-16	TITLE SMPM STR JACK SMOOTH BORE PCB THROUGH HOLE 4 LEGS RECEPTACLE SCALE: 27.0:1.0 SHEET 2 OF 2	Amphenol RF www.amphenolrf.com	
	REFERENCE EAR # 7105	ENGINEER KARTHIK R	DATE 15-Sep-16		DRAWING NO. 925-137J-51P	
	CONFIGURATION LEVEL: In Work	APPROVED S.HSIEH	DATE 13-Jan-17		ITEM NO. 925-137J-51P	
	FINISH	CAD FILE			PART NO. 925-137J-51P	
					DWG SIZE B	REV A

Mouser Electronics

Authorized Distributor

Click to View Pricing, Inventory, Delivery & Lifecycle Information:

[Amphenol:](#)

[925-137J-51P](#)