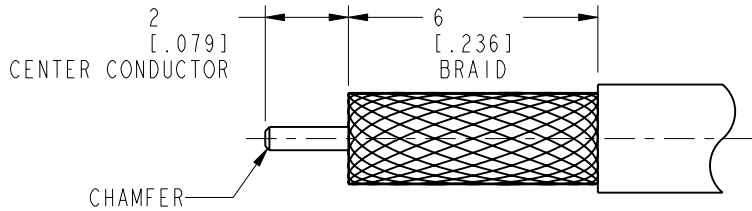
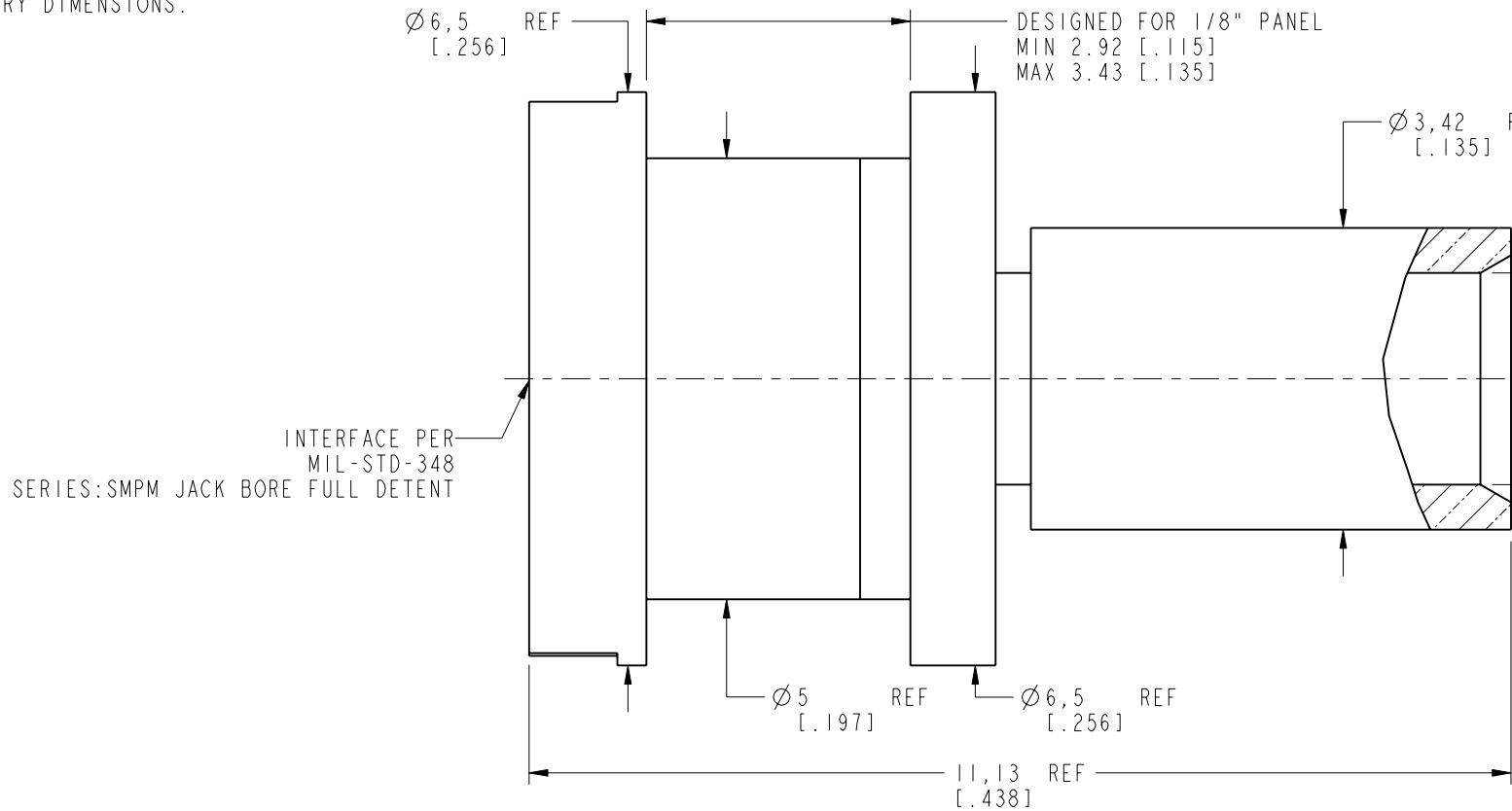


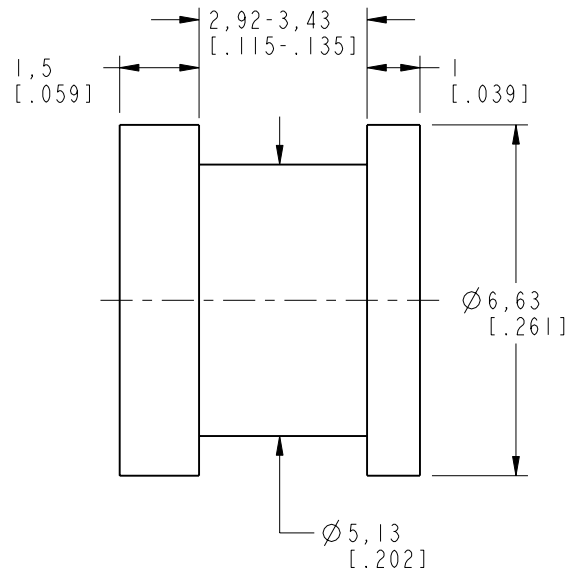
NOTES:

1. MATERIALS AND FINISHES:
BODIES - BRASS, GOLD PLATING
CONTACT - BeCu, GOLD PLATING
INSULATOR - PTFE,NATURAL
INSULATOR DISC - ULTEM 1000, NATURAL
2. ELECTRICAL:
A. IMPEDANCE: 50 OHM
B. FREQUENCY RANGE: DC -40 GHz
C. VSWR : 1.15:1 MAX @ DC -10 GHz
1.25:1 MAX @ 10 GHz -26.5 GHz
1.35:1 MAX @ 26.5 GHz -40 GHz
3. MECHANICAL:
A. DURABILITY: 100 MATING CYCLES MIN.
B. TEMPERATURE RANGE: -65° C TO +165° C
4. PACKAGING:
A. QUANTITY: SINGLE PACK
B. MARKING: BAG TO BE MARKED
"AMPHENOL RF, 925-135J-51S, AND DATE CODE"
5. CABLE ASSEMBLY INSTRUCTIONS.
A. TRIM CABLE AS SHOWN.
B. SLIDE INSULATOR DISC OVER THE CABLE CENTER CONDUCTOR.
C. SOLDER CENTER CONTACT TO CABLE CENTER CONDUCTOR.
D. INSERT CONTACT TO INSULATOR UNTIL CONTACT BOTTOMS.
E. SOLDER OUTER CONDUCTOR OF CABLE TO REAR BODY.

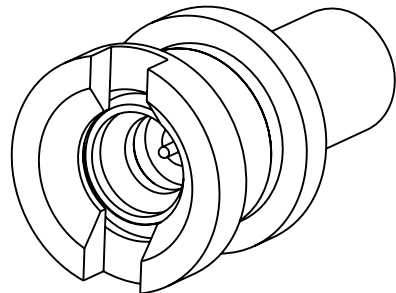
6 SHOWS CABLE ENTRY DIMENSIONS.



RECOMMENDED CABLE STRIPPING DIMENSIONS



RECOMMENDED MOUNTING HOLE DIMENSIONS



SCALE 5.000

CUSTOMER OUTLINE DRAWING
ALL OTHER SHEETS ARE FOR INTERNAL USE ONLY

<div>UNLESS OTHERWISE SPECIFIED, DIMENSIONS ARE IN METRIC AND TOLERANCES ARE: <0.5mm ± 0.05mm 0.5 - 6mm ± 0.1mm 6 - 30mm ± 0.2mm 30 - 120mm ± 0.3mm ANGLES ± 1°</div> <div>NOTICE - These drawings, specifications, or other data (1) are, and remain the property of Amphenol corp. (2) must be returned upon request; and (3) are confidential and not to be disclosed to any person other than those to whom they are given by Amphenol Corp. the furnishing of these drawings, specifications, or other data by Amphenol Corp., or to any other person to anyone for any purpose is not to be regarded by implication or otherwise in any manner licensing, granting rights to permitting such holder or any other person to manufacture, use or sell any product, process or design, patented or otherwise, that may in any way be related to or disclosed by said drawings, specifications, or other data.</div>	MATERIAL SEE NOTES		DRAWN M. ZHANG	DATE 12-Sep-16	TITLE SMPM STR JACK BHD FOR .086" CABLE		Amphenol RF www.amphenolrf.com	
	REFERENCE EAR # 5420		ENGINEER E WANKOFF	DATE 18-Feb-13			DRAWING NO. 925-135J-51S	
	CONFIGURATION LEVEL: In Work		APPROVED S. HSIEH	DATE 14-Sep-16	SCALE: 15.0:1.0 SHEET 2 OF 2		ITEM NO. 925-135J-51S	
	FINISH		CAD FILE		DWG SIZE B		REV A	
							PART NO. 925-135J-51S	

Mouser Electronics

Authorized Distributor

Click to View Pricing, Inventory, Delivery & Lifecycle Information:

[Amphenol:](#)

[925-135J-51S](#)