
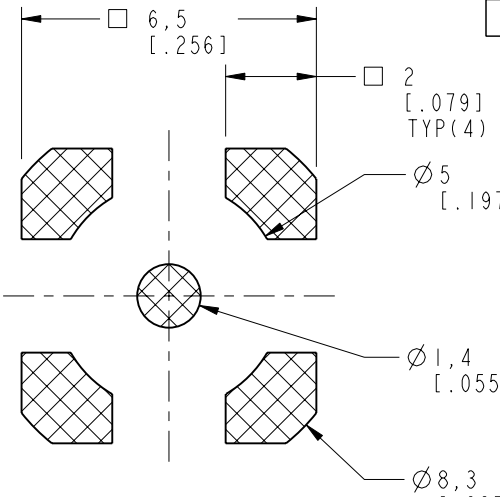


2. ELECTRICAL:

- A. IMPEDANCE: 50 OHM
- B. FREQUENCY RANGE: DC - 6 GHz
- C. RETURN LOSS (VSWR): 20dB (1.22) @ DC - 3 GHz
17dB (1.33) @ 3 - 6 GHz
- D. CONTACT RESISTANCE: CENTER CONTACT 5 mΩ MAX.
OUTER CONTACT 5 mΩ MAX.
- E. DIELECTRIC WITHSTANDING VOLTAGE: 1000 VRMS, MIN.
- F. INSERTION LOSS: 0.1dB @ DC-3GHz
- G. INSULATION RESISTANCE: 5000 MΩ MIN.
- H. POWER HANDLING: 40 W @ 2.6 GHz AT 95°C
120 W @ 2.5 GHz AT 95°C

THIRD ANGLE PROJ. 

RE
A



6,5
[.256]

2
[.079]
TYP (4)

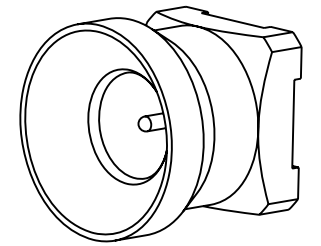
Ø5
[.197]

Ø1,4
[.055]

Ø8,3
[.327]

RECOMMENDED

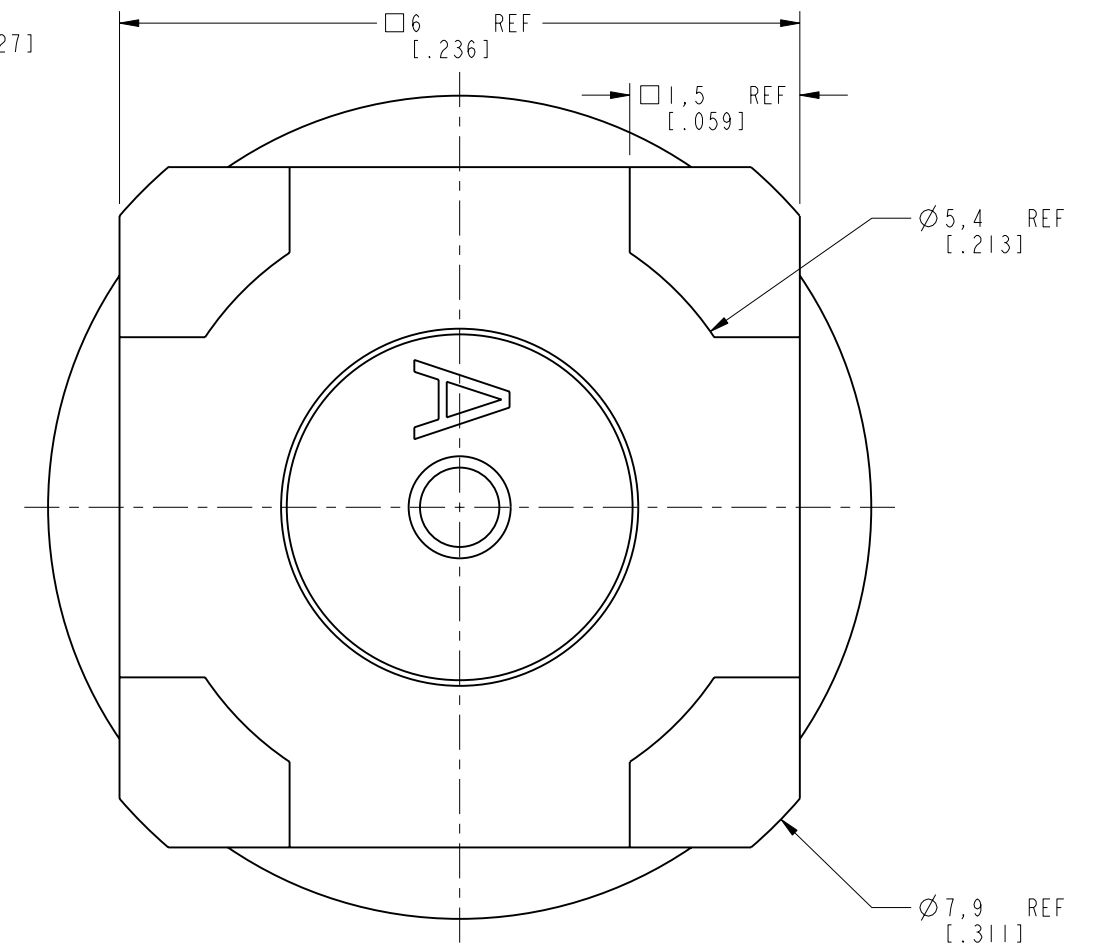
SOLDER FOOTPRINT ONLY
PERFORMANCE WILL VARY
BASED ON BOARD LAYOUT



Technical drawing of a mechanical part, likely a connector or plug, showing a cross-section. The drawing includes the following dimensions and features:

- Overall width: 6,45 REF [.254]
- Top hole diameter: $\varnothing 7,26$ REF [.286]
- Bottom hole diameter: $\varnothing 0,9$ REF [.035]
- Bottom hole depth: 0,05 REF [.002]
- Bottom hole offset from right edge: 0,3 REF [.012]
- Distance from bottom hole center to right edge: 1,52 REF [.060]
- Note: INTERFACE PER HD-EFI JACK SMOOTH BORE (pointing to the left side of the part)

The drawing shows a cross-section of a cylindrical component with a central bore. The left side is labeled "INTERFACE PER HD-EFI JACK SMOOTH BORE". The right side shows a cross-section of a plug or connector with a central bore. The dimensions are given in millimeters (REF) and inches (in brackets).



ALL OTHER SHEETS ARE FOR INTERNAL USE ONLY

UNLESS OTHERWISE SPECIFIED, DIMENSIONS ARE IN METRIC AND TOLERANCES ARE: <0.5mm 0.5 - 6mm 6 - 30mm 30 - 120mm ANGLES ± 0.05mm ± 0.1mm ±0.2mm ± 0.3mm ±1°	MATERIAL SEE NOTES REFERENCE
--	--

Mouser Electronics

Authorized Distributor

Click to View Pricing, Inventory, Delivery & Lifecycle Information:

[Amphenol:](#)

[920-501J-53P](#)