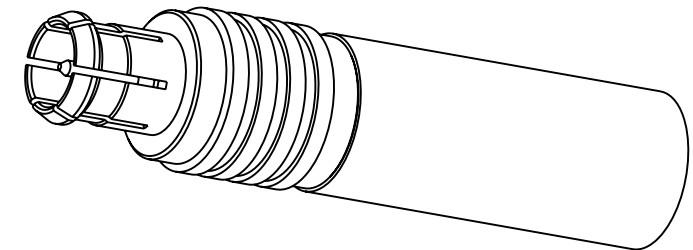


NOTES:

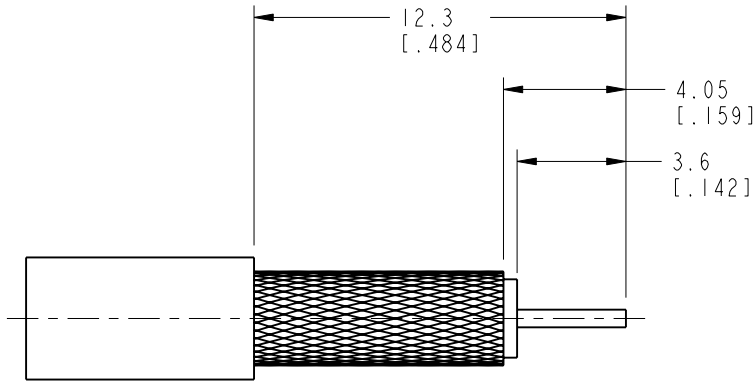
1. MATERIALS AND FINISHES:
FERRULE - COPPER, NICKEL PLATING
BODY - BERYLLIUM COPPER, GOLD PLATING
REAR BODY - BRASS, GOLD PLATING
CONTACT - BRASS, GOLD PLATING
INSULATOR - PTFE, NATURAL
INSULATOR BEAD - PTFE, NATURAL
2. ELECTRICAL:
A. IMPEDANCE: 75 OHM
B. FREQUENCY RANGE: DC-12 GHz
C. VSWR(RETURN LOSS): 1.22 (20 dB) MAX. @ DC-6 GHz
1.43 (15 dB) MAX. @ 6-12 GHz
D. DIELECTRIC WITHSTANDING VOLTAGE: 500 VRMS, MIN.
3. MECHANICAL:
A. DURABILITY: 500 CYCLES MIN.
B. TEMPERATURE RANGE: -65°C TO +165°C
C. DISENGAGEMENT FORCE: 8 LBS MAX.
4. CABLE ASSEMBLY INSTRUCTIONS:
A. TRIM CABLE AS SHOWN.
B. SLIDE FERRULE ONTO CABLE.
C. INSERT INSULATOR BEAD ONTO CENTER CONDUCTOR.
D. SOLDER CONTACT TO CABLE CENTER CONDUCTOR.
E. INSERT CABLE INTO CONNECTOR WITH FOIL ENTERING CONNECTOR AND BRAID OVER KNURL.
F. CRIMP FERRULE USING .178" HEX DIE.
5. SHOWS CABLE ENTRY DIMENSIONS.
6. PACKAGING:
A. QUANTITY: SINGLE PACK
B. MARKING: PACKAGING TO BE MARKED
"AMPHENOL RF, 919-421P-71S12G & DATE CODE"

THIRD ANGLE PROJ.

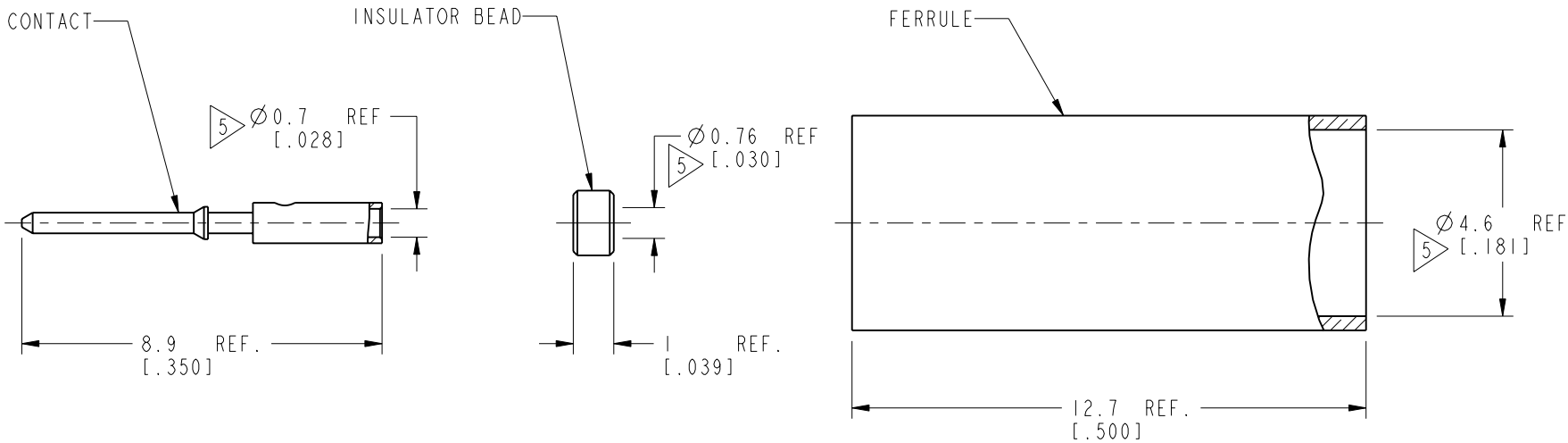
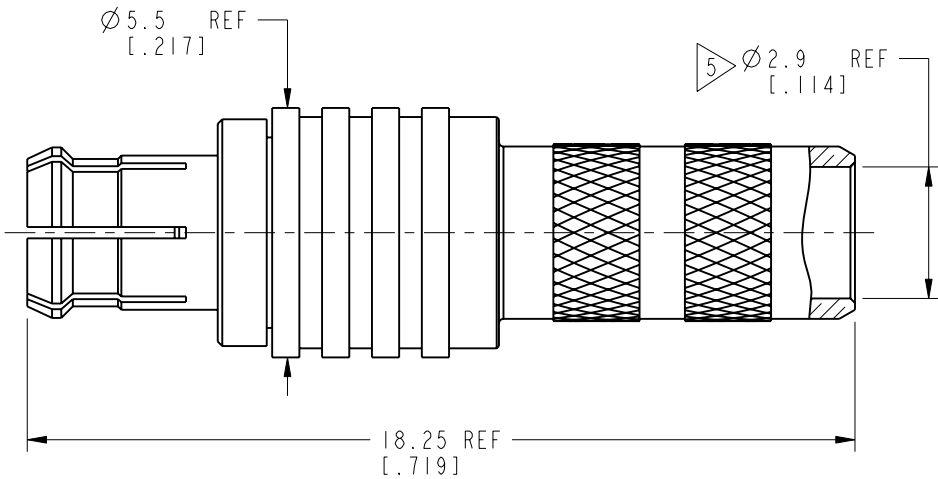
REVISIONS				
REV	DESCRIPTION	DATE	ECN	APPR
A	RELEASE TO MFG.	09-Aug-19	12525	EH



SCALE 4.000



RECOMMENDED
CABLE STRIPPING DIMENSIONS



CUSTOMER OUTLINE DRAWING
ALL OTHER SHEETS ARE FOR INTERNAL USE ONLY

UNLESS OTHERWISE SPECIFIED, DIMENSIONS ARE IN METRIC AND TOLERANCES ARE: <0.5mm 0.5 - 6mm 6 - 30mm 30 - 120mm ANGLES ± 0.05mm ±0.1mm ±0.2mm ± 0.3mm ±1° NOTICE - These drawings, specifications, or other data (1) are, and remain the property of Amphenol corp. (2) must be returned upon request; and (3) are confidential and not to be disclosed to any person other than those to whom they are given by Amphenol Corp. the furnishing of these drawings, specifications, or other data by Amphenol Corp., or to any other person to anyone for any purpose is not to be regarded by implication or otherwise in any manner licensing, granting rights to permitting such holder or any other person to manufacture, use or sell any product, process or design, patented or otherwise, that may in any way be related to or disclosed by said drawings, specifications, or other data.	MATERIAL NOTE 1	DRAWN M. ZHANG	DATE 09-Aug-19	TITLE 75 OHM MCX PLUG FOR BELDEN 4855R		Amphenol RF www.amphenolrf.com	
	REFERENCE	ENGINEER E. HILL	DATE 13-May-19				
	EAR# 8605	APPROVED S.HSIEH	DATE 14-Aug-19	SCALE: 6.0:1.0		SHEET 2 OF 2	DRAWING NO. 919-421P-71S12G
	REF: ---	CAD FILE		DWG SIZE B			REV A
	CONFIGURATION LEVEL: In Work						PART NO. 919-421P-71S12G
FINISH							

Mouser Electronics

Authorized Distributor

Click to View Pricing, Inventory, Delivery & Lifecycle Information:

[Amphenol:](#)

[919-421P-71S12G](#)