

NOTES:

1. MATERIALS AND FINISHES:

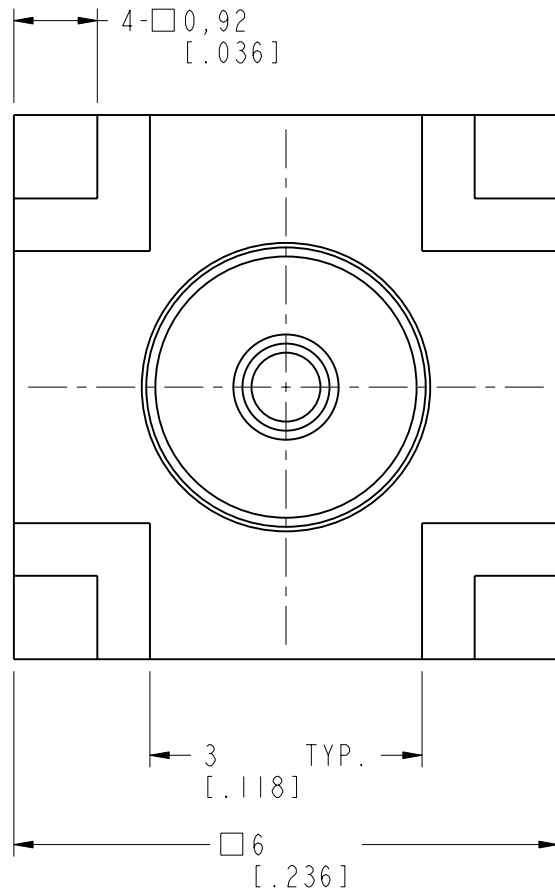
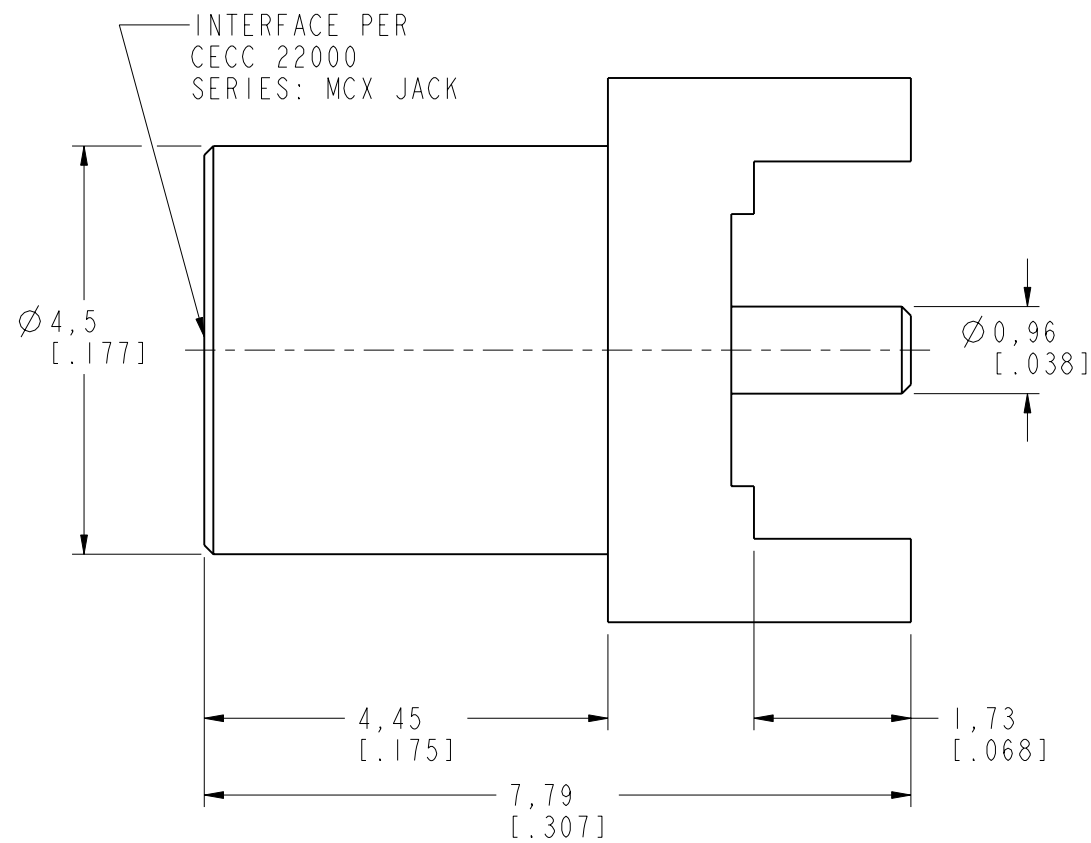
BODY - BRASS, GOLD PLATING (.000003" MIN. THICK)
CONTACT - BeCu, GOLD PLATING (.000005" MIN. THICK)
INSULATOR - PTFE, NATURAL

2. ELECTRICAL:

A. IMPEDANCE: 50 OHM
B. FREQUENCY RANGE: DC - 6 GHz
C. D.W.V: 1000 VRMS, MIN.

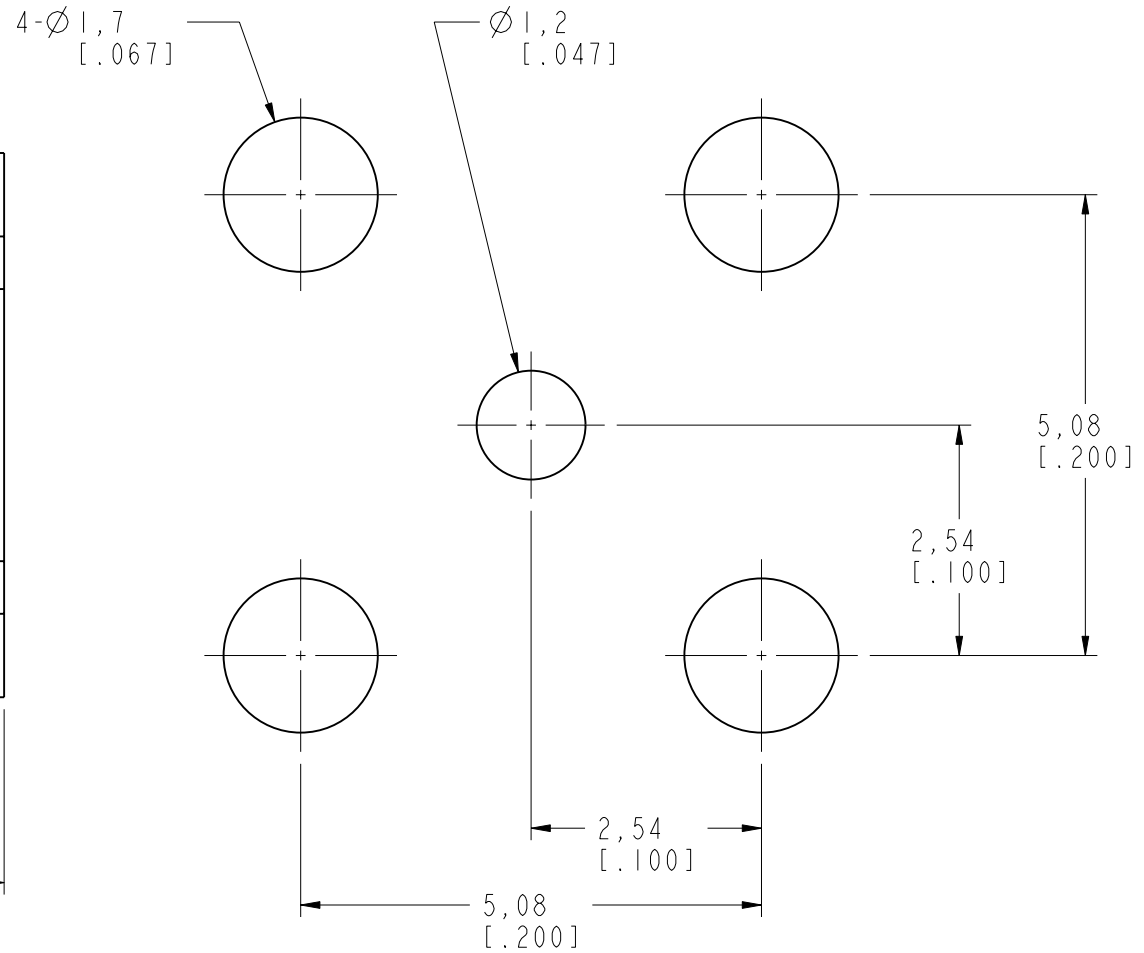
3. MECHANICAL:

A. DURABILITY: 500 CYCLES MIN.
B. TEMPERATURE RANGE: -65°C TO +165°C



SCALE 5.000

REVISIONS				
REV	DESCRIPTION	DATE	ECO	APPR
A	RELEASE TO MFG.	04-Jul-16	01326	MZ



RECOMMENDED
PCB MOUNTING HOLE

CUSTOMER OUTLINE DRAWING
ALL OTHER SHEETS ARE FOR INTERNAL USE ONLY

UNLESS OTHERWISE SPECIFIED, DIMENSIONS ARE IN METRIC AND TOLERANCES ARE: <0.5mm ± 0.05mm 0.5 - 6mm ± 0.1mm 6 - 30mm ± 0.2mm 30 - 120mm ± 0.3mm ANGLES ± 1°	MATERIAL -	DRAWN M. ZHANG	DATE 04-Jul-16	TITLE MCX P.C. BOARD RECEPT. JACK (.068" LEGS)		Amphenol RF www.amphenolrf.com	
		ENGINEER S. DUAN	DATE 04-Jul-16				
		REFERENCE AND CONFIGURATION LEVEL: In Work	APPROVED S. HSIEH DATE 04-Jul-16	SCALE: 12.0:1.0	SHEET 2 OF 2	DRAWING NO. 919-382J-51P	ITEM NO. 919-382J-51P
		FINISH	CAD FILE	DWG SIZE B	REV A	PART NO. 919-382J-51P	

Mouser Electronics

Authorized Distributor

Click to View Pricing, Inventory, Delivery & Lifecycle Information:

[Amphenol:](#)

[919-382J-51P](#)