

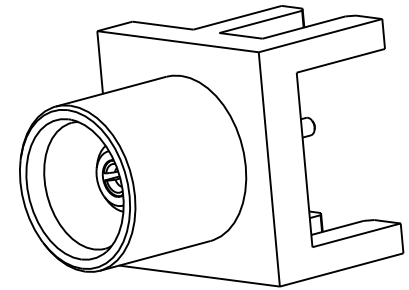
1. MATERIALS AND FINISHES  
BODY - BRASS, GOLD PLATING  
CONTACT - BERYLLIUM COPPER, GOLD PLATING  
INSULATOR - PTFE

A. IMPEDANCE: 50 OHM  
B. FREQUENCY RANGE: DC-2.6 GHz

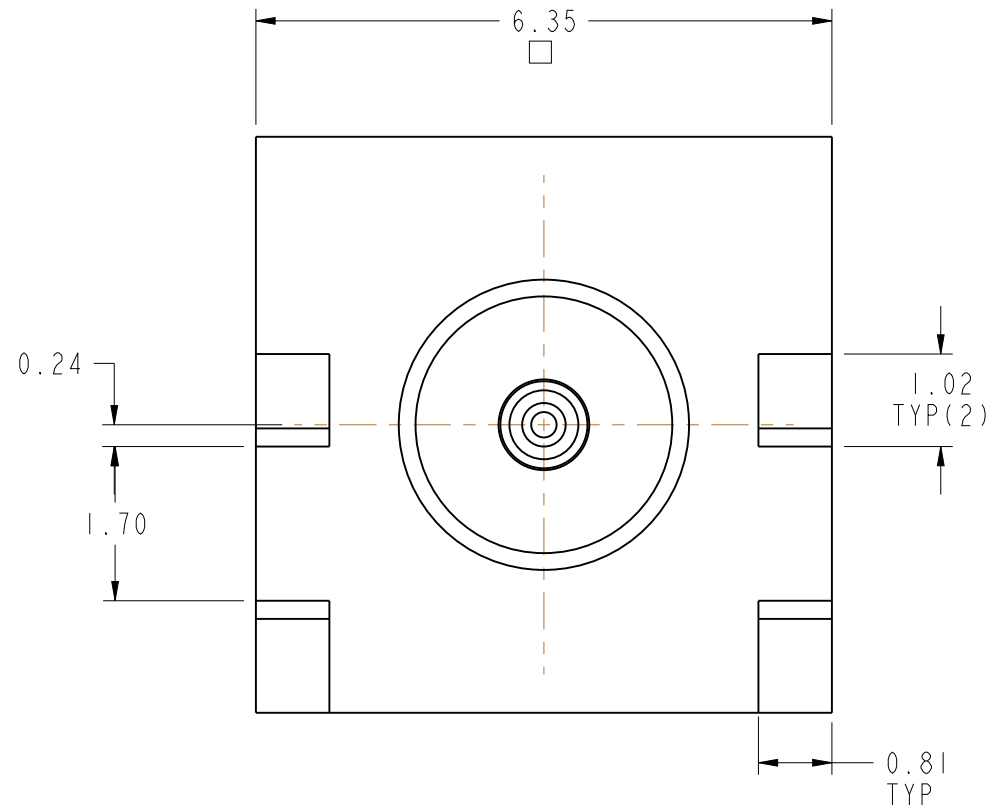
A. DURABILITY: 500 CYCLES MIN.  
B. TEMPERATURE RANGE: -65°C TO +165°C

A. QUANTITY: SINGLE PACK  
B. MARKING: BAG TO BE MARKED  
"AMPHENOLRF, 919-246J-51S AND DATE CODE"

REV	DESCRIPTION	DATE	ECO	APPR
A	RELEASE TO MFG.	1/28/11	48436	CL



SCALE 5.000



# CUSTOMER OUTLINE DRAWING

ALL OTHER SHEETS ARE FOR INTERNAL USE ONLY

UNLESS OTHERWISE SPECIFIED, DIMENSIONS ARE IN METRIC AND TOLERANCES ARE: <0.5mm    0.5 - 6mm    6 - 30mm    30 - 120mm    ANGLES ± 0.05mm    ±0.1mm    ±0.2mm    ± 0.3mm    ±1° NOTICE - These drawings, specifications, or other data (1) are, and remain the property of Amphenol corp. (2) must be returned upon request; and (3) are confidential and not to be disclosed to any person other than those to whom they are given by Amphenol Corp. the furnishing of these drawings, specifications, or other data by Amphenol Corp., or to any other person to anyone for any purpose is not to be regarded by implication or otherwise in any manner licensing, granting rights to permitting such holder or any other person to manufacture, use or sell any product, process or design, patented or otherwise, that may in any way be related to or disclosed by said drawings, specifications, or other data.	MATERIAL  SEE NOTES	DRAWN KARTHIK R	DATE 22-Nov-10	TITLE ASSEMBLY MCX, JACK EDGE MOUNT	Amphenol RF www.amphenolrf.com	
		ENGINEER KARTHIK R	DATE 22-Nov-10		DRAWING NO. 919-246J-51S	
		REFERENCE EAR # 4445	APPROVED K. CAPOZZI	DATE 1/28/11	SCALE: 12.0:1.0	SHEET 2 OF 2
		CONFIGURATION LEVEL: In work	CAD FILE		DWG SIZE B	REV A
	FINISH					PART NO. 919-246J-51S

# Mouser Electronics

Authorized Distributor

Click to View Pricing, Inventory, Delivery & Lifecycle Information:

[Amphenol:](#)

[919-246J-51S](#)