

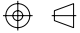
NOTES:

1. MATERIALS AND FINISHES (PLATING THICKNESS IN MICRO-INCHES):  
① SHELL : COPPER ALLOY, NICKEL 50 MIN. THICK OVERALL, SOLDERING AREA GOLD 2 MIN. THICK  
② PIN 1 : STAINLESS STEEL, NICKEL 50 MIN. THICK OVERALL, SOLDERING AREA GOLD 2 MIN. THICK, CONTACT AREA GOLD 5 MIN. THICK  
③ PIN 2 : STAINLESS STEEL, NICKEL 50 MIN. THICK OVERALL, SOLDERING AREA GOLD 2 MIN. THICK, CONTACT AREA GOLD 5 MIN. THICK  
④ TOP HOUSING : LCP UL94V-0, BLACK  
⑤ BOTTOM HOUSING : LCP UL94V-0, BLACK

2. ELECTRICAL:  
A. IMPEDANCE: 50 OHM  
B. FREQUENCY RANGE: DC - 11 GHz  
C. VSWR : 1.20 MAX. @ DC-3 GHz,  
1.30 MAX. @ 3-6 GHz,  
1.50 MAX. @ 6-11 GHz  
D. DIELECTRIC WITHSTANDING VOLTAGE: 300V AC FOR 1 MINUTE  
E. INITIAL CONTACT RESISTANCE: 70 mΩ MAX (WITHOUT CONDUCTOR RESISTANCE)  
F. INSULATION RESISTANCE: 500 MEGOHMS MIN.  
G. INSERTION LOSS: 0.10 dB MAX. @ DC-3 GHz  
0.20 dB MAX. @ 3-6 GHz  
0.50 dB MAX. @ 6-11 GHz  
H. ISOLATION: 20 dB MIN. @ DC-3 GHz  
15 dB MIN. @ 3-6 GHz  
10 dB MIN. @ 6-11 GHz  
I. VOLTAGE RATING: 60V AC MAX  
J. POWER RATING: 2 W

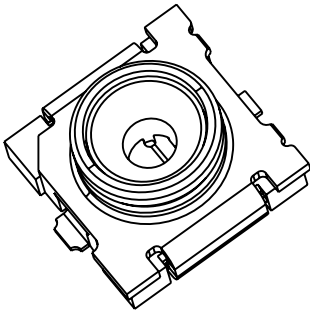
3. MECHANICAL:  
A. TEMPERATURE RANGE: -40°C TO +85°C  
B. DURABILITY: 100 CYCLES

4. PACKAGING:  
A. QUANTITY: TAPE AND REEL, 3000 PCS/REEL  
B. MARKING: BAG TO BE MARKED  
"AMPHENOL RF, 902-9235, AND DATE CODE"

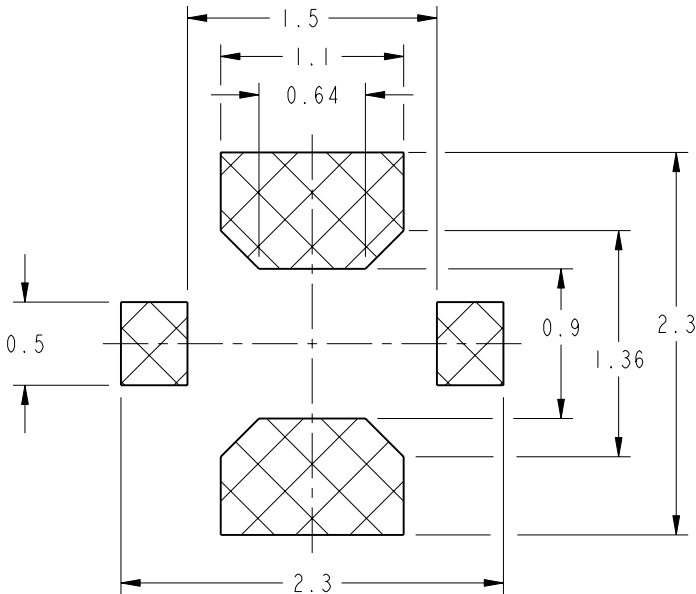
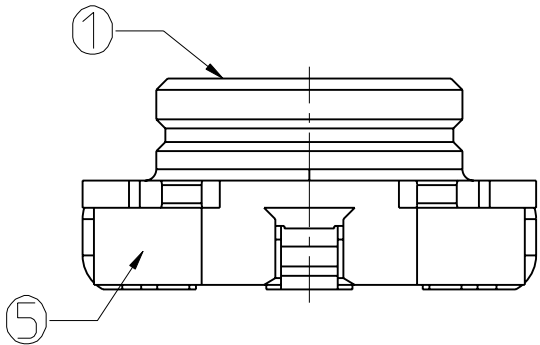
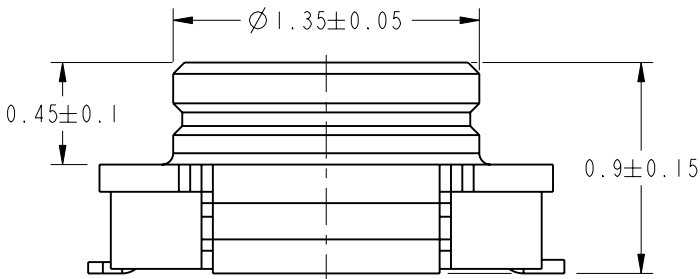
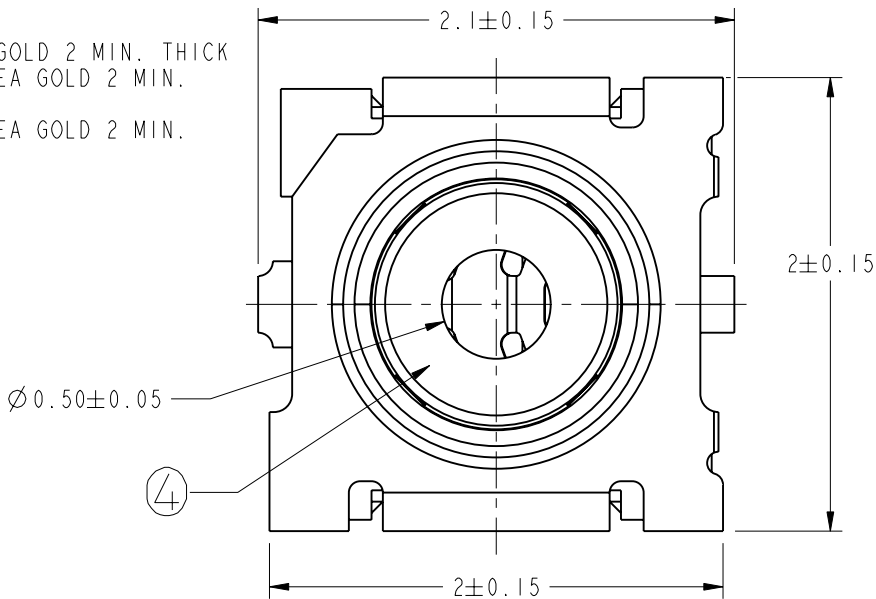
THIRD ANGLE PROJ. 

REVISIONS

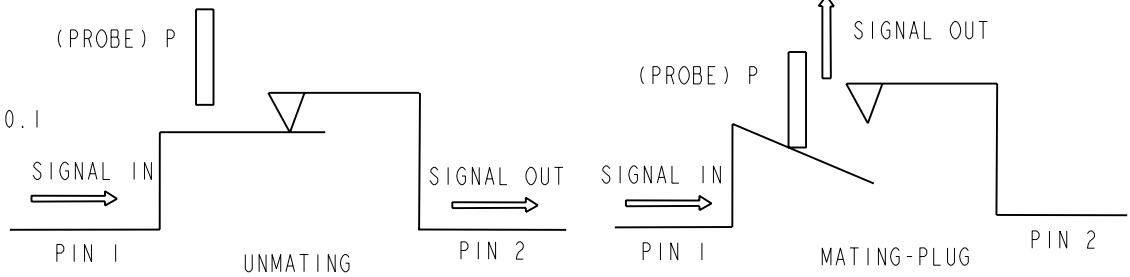
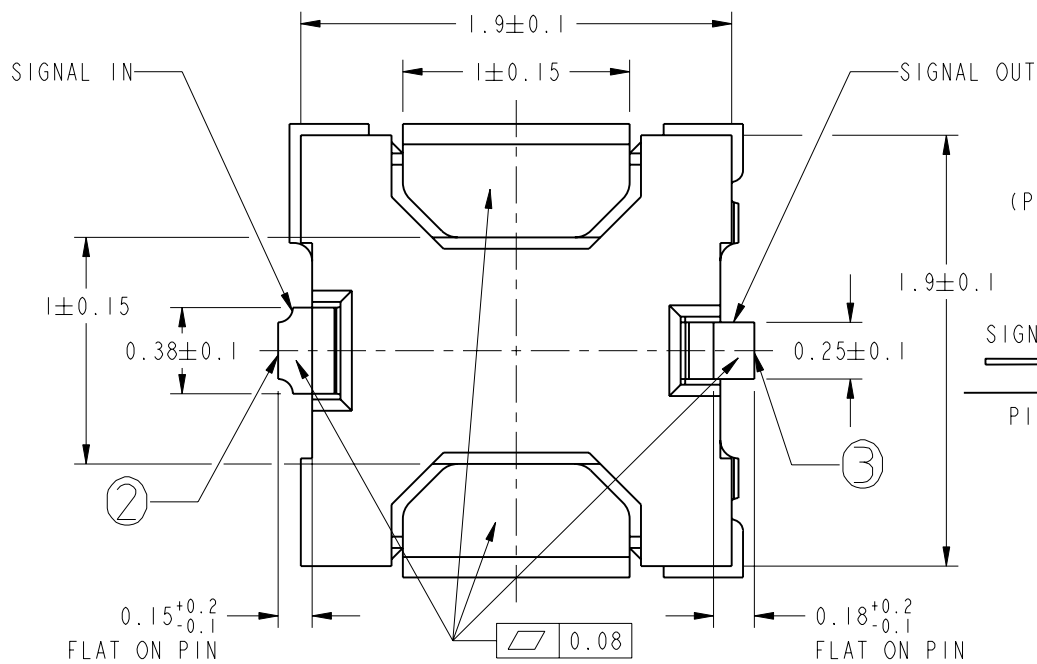
REV	DESCRIPTION	DATE	ECO	APPR
A	RELEASE TO MFG.	5/6/15	50282	EW
B	CORRECTED MATERIAL AND PLATING DETAILS VRD-DMI7021801T3	13-Mar-17	50604	TL



SCALE 15.000



RECOMMENDED PCB  
LAYOUT DIMENSIONS



**CUSTOMER OUTLINE DRAWING**  
ALL OTHER SHEETS ARE FOR INTERNAL USE ONLY

UNLESS OTHERWISE SPECIFIED, DIMENSIONS ARE IN METRIC AND TOLERANCES ARE:  
<0.5mm ±0.05mm 0.5 - 6mm ±0.1mm 6 - 30mm ±0.2mm 30 - 120mm ±0.3mm ANGLES ±1°

NOTICE - These drawings, specifications, or other data (1) are, and remain the property of Amphenol corp. (2) must be returned upon request; and (3) are confidential and not to be disclosed to any person other than those to whom they are given by Amphenol Corp. the furnishing of these drawings, specifications, or other data by Amphenol Corp., or to any other person to anyone for any purpose is not to be regarded by implication or otherwise in any manner licensing, granting rights to permitting such holder or any other person to manufacture, use or sell any product, process or design, patented or otherwise, that may in any way be related to or disclosed by said drawings, specifications, or other data.

MATERIAL

SEE NOTES

REFERENCE  
EAR # 6126

CONFIGURATION LEVEL: In Work

FINISH

DRAWN  
TOM

ENGINEER  
E WANKOFF

APPROVED  
S.H

CAD FILE

DATE  
13-Mar-17

DATE  
04-Mar-14

DATE  
13-Mar-17

TITLE  
RF SWITCH

SCALE: 30.0:1.0 SHEET 2 OF 2

DWG SIZE  
B

REV  
B

Amphenol RF

www.amphenolrf.com

DRAWING NO. 902-9235

ITEM NO. 902-9235

PART NO. 902-9235

# Mouser Electronics

Authorized Distributor

Click to View Pricing, Inventory, Delivery & Lifecycle Information:

[Amphenol:](#)

[902-9235](#)