

- NOTES:
1. MATERIALS AND FINISHES:  
BODY-FRONT, BODY-REAR,CAP,  
OUTER CONTACT,COUPLING NUT -BRASS, NICKEL PLATING  
CONTACT - BRASS, GOLD PLATING  
INSULATOR - PTFE  
INSULATOR REAR - ULTEM 1000  
FERRULE- BRASS, NICKEL PLATING
2. ELECTRICAL:  
A. IMPEDANCE: 50 OHM  
B. FREQUENCY RANGE: DC - 6 GHz  
C. VSWR : 1.15 MAX @ DC-6 GHz  
D. DIELECTRIC WITHSTANDING VOLTAGE: 1000 VRMS, MIN.

3. MECHANICAL:  
A. DURABILITY: 500 CYCLES MIN.  
B. TEMPERATURE RANGE: -65° C TO +165° C

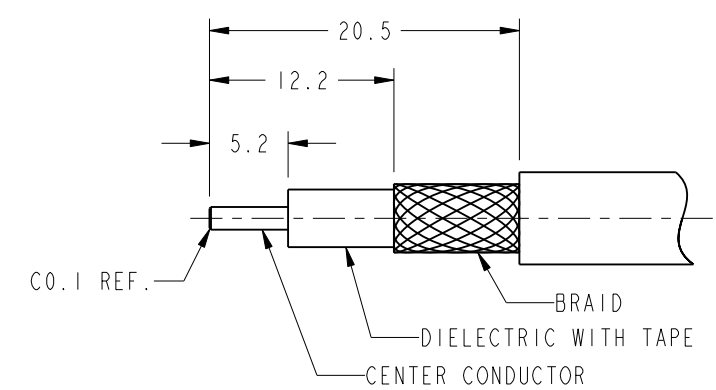
4. PACKAGING:  
A. QUANTITY: SINGLE PACK  
B. MARKING: BAG TO BE MARKED  
"AMPHENOL RF, 82-6557 AND DATE CODE"

5. RECOMMENDED CABLE ASSEMBLY INSTRUCTIONS:  
A. TRIM CABLE AS SHOWN.  
B. SLIDE HEAT SHRINK TUBE,FERRULE & REAR INSULATOR ONTO CABLE.  
C. INSERT CABLE WITH FOIL ENTERING CONNECTOR AND BRAID OVER KNURL.  
D. SOLDER CABLE CENTER CONDUCTOR TO CONTACT.  
E. CRIMP FERRULE OVER BRAID WITH 0.255" HEX DIE.  
F. APPLY HEAT SHRINK TUBING OVER FERRULE.  
G. HEAT SHRINK TUBING SHOULD FULLY (360 DEG) COVER THE BUMP ON BODY AND END WITHIN AREA "A"

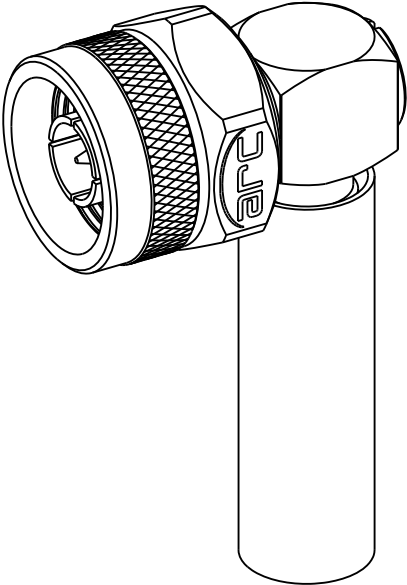
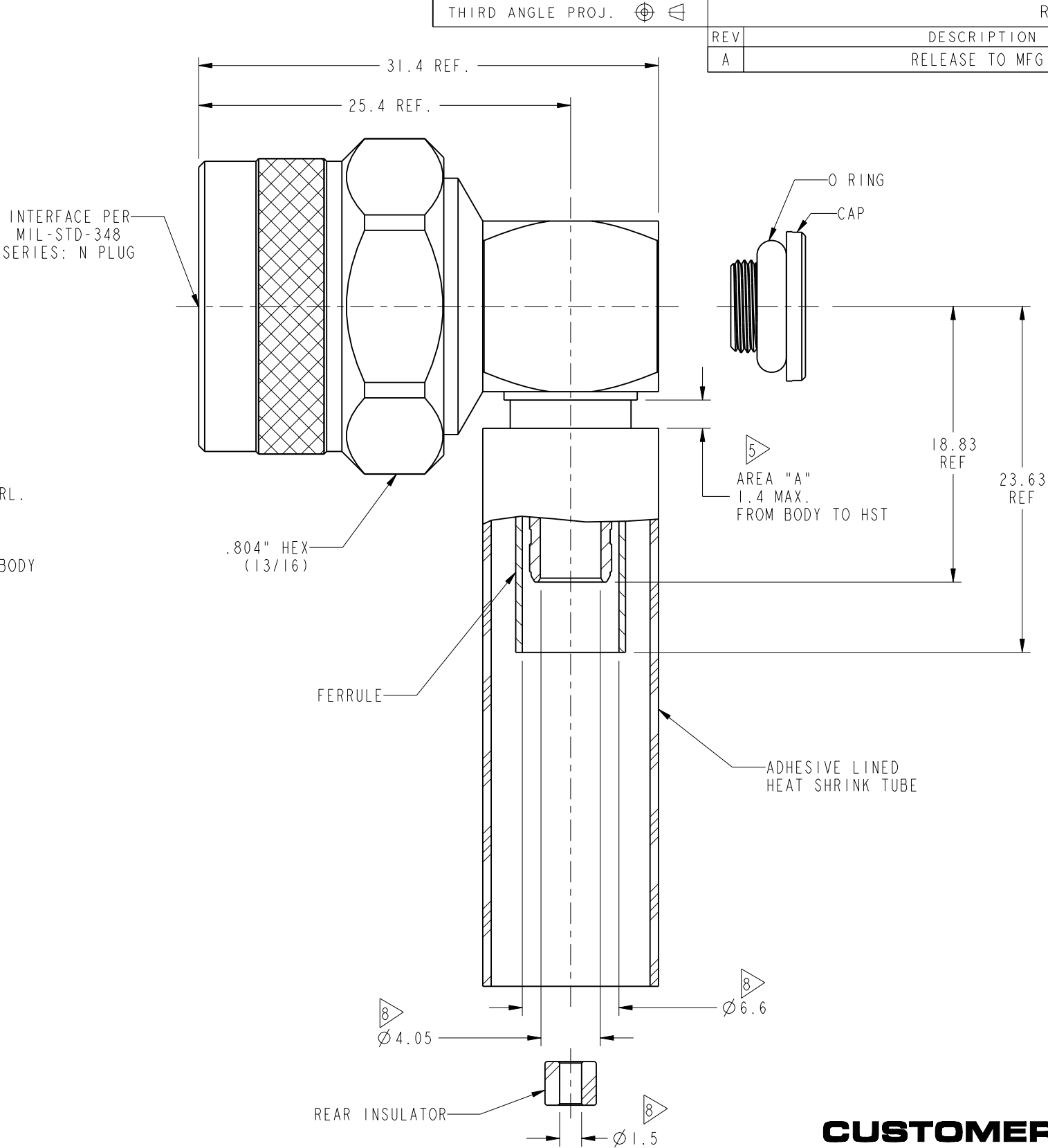
6. CAP ASSEMBLY INSTRUCTIONS:  
A. PLACE O-RING ON CAP AS SHOWN.  
B. ASSEMBLE CAP TO BODY WITH 15 IN-LBS TORQUE.

7. RECOMMENDED COUPLING TORQUE : 6-10 IN-LBS.

8. SHOWS CABLE ENTRY DIMENSIONS.



**RECOMMENDED CABLE  
STRIPPING DIMENSIONS**



SCALE 1.500

**CUSTOMER OUTLINE DRAWING**

ALL OTHER SHEETS ARE FOR INTERNAL USE ONLY

UNLESS OTHERWISE SPECIFIED, DIMENSIONS ARE IN METRIC AND TOLERANCES ARE:  
<0.5mm ± 0.05mm 0.5 - 6mm ±0.1mm 6 - 30mm ±0.2mm 30 - 120mm ± 0.3mm ANGLES ±1°

NOTICE - These drawings, specifications, or other data (1) are, and remain the property of Amphenol corp. (2) must be returned upon request; and (3) are confidential and not to be disclosed to any person other than those to whom they are given by Amphenol Corp. the furnishing of these drawings, specifications, or other data by Amphenol Corp., or to any other person to anyone for any purpose is not to be regarded by implication or otherwise in any manner licensing, granting rights to permitting such holder or any other person to manufacture, use or sell any product, process or design, patented or otherwise, that may in any way be related to or disclosed by said drawings, specifications, or other data.

MATERIAL

SEE NOTES

REFERENCE  
EAR # 5423

CONFIGURATION LEVEL:

FINISH

DRAWN  
T.DENG

ENGINEER  
ABHAYA KISHORE

APPROVED  
S.HSIEH

CAD FILE

DATE  
19-Mar-13

DATE  
10-Aug-12

DATE  
19-Mar-13

TITLE  
N PLUG R/A IP-67  
FOR LMR-240-UF CABLE

SCALE: 2.8:1.0 SHEET 2 OF 2

DWG SIZE  
B

REV  
A

Amphenol RF

www.amphenolrf.com

DRAWING NO.82-6557

ITEM NO. 82-6557

PART NO. 82-6557

# Mouser Electronics

Authorized Distributor

Click to View Pricing, Inventory, Delivery & Lifecycle Information:

[Amphenol:](#)

[082-6557](#)