

NOTES:  
1. MATERIALS AND FINISHES:  
BODY, SLEEVE, -BRASS, GOLD PLATING  
RETAINING RING - BRASS, NICKEL PLATING  
CONTACT - BERYLLIUM COPPER, GOLD PLATING  
INSULATOR - PTFE

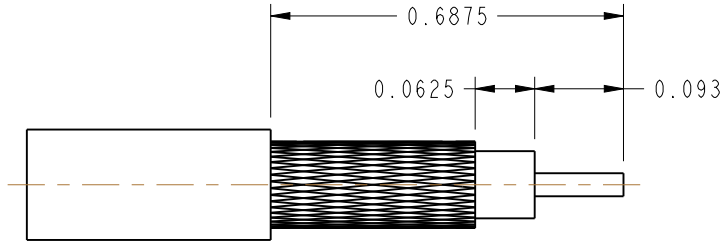
2. SHOWS CABLE ENTRY DIMENSIONS

3. PACKAGING:  
A. QUANTITY: SINGLE PACK  
B. MARKING: BAG TO BE MARKED  
"AMPHENOLRF, 27-1, AND DATE CODE"

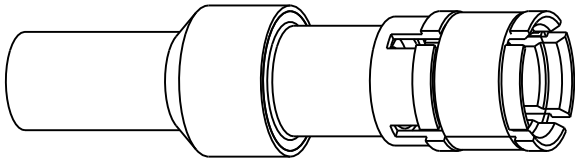
THIRD ANGLE PROJ.

REVISIONS

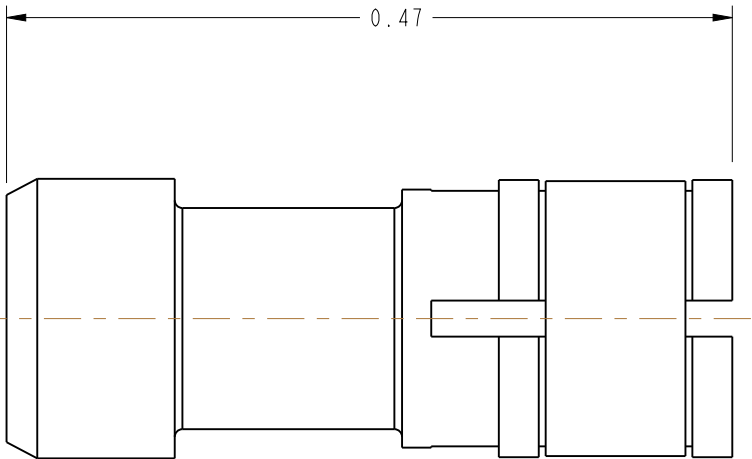
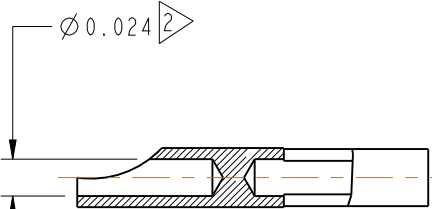
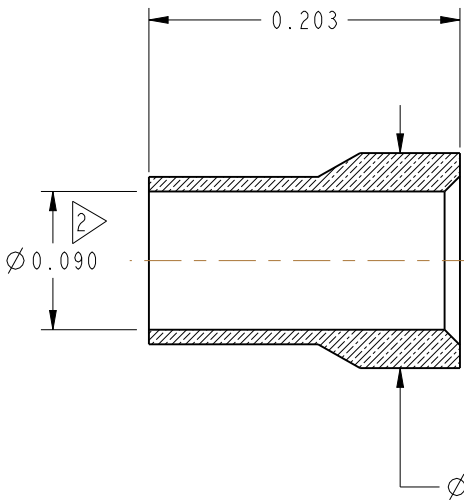
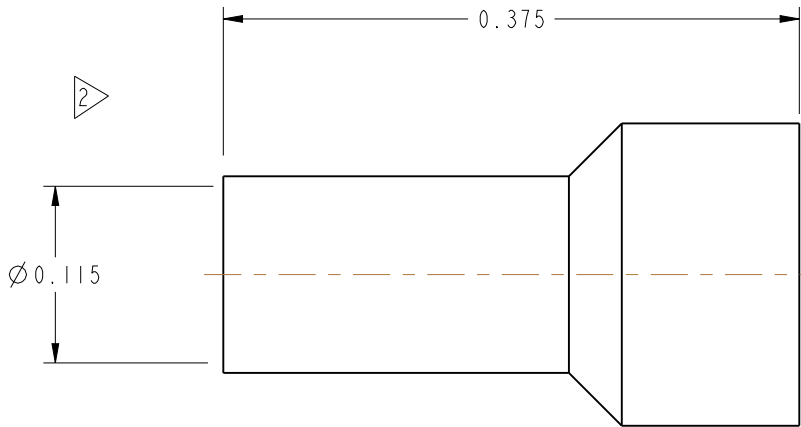
REV	DESCRIPTION	DATE	ECO	APPR
J	REDRAWN -UPDATED PER EPA 862156	09-Sep-65	12485	S.P.
T	REVISED NOTE 6	06-May-91	30546	V.T./B.R.
U	SEE SHEET 1	10/13/11	48761	HR



RECOMMENDED CABLE  
STRIPPING DIMENSIONS



SCALE 4.000



CUSTOMER OUTLINE DRAWING  
ALL OTHER SHEETS ARE FOR INTERNAL USE ONLY

UNLESS OTHERWISE SPECIFIED, DIMENSIONS ARE IN INCHES AND TOLERANCES ARE: 2 PLACE DECIMAL 3 PLACE DECIMAL ANGLES ±.015 (0.381 mm) ±.005 (0.127 mm) ± 1° NOTICE - These drawings, specifications, or other data (1) are, and remain the property of Amphenol corp. (2) must be returned upon request; and (3) are confidential and not to be disclosed to any person other than those to whom they are given by Amphenol Corp. the furnishing of these drawings, specifications, or other data by Amphenol Corp., or to any other person to anyone for any purpose is not to be regarded by implication or otherwise in any manner licensing, granting rights to permitting such holder or any other person to manufacture, use or sell any product, process or design, patented or otherwise, that may in any way be related to or disclosed by said drawings, specifications, or other data.	MATERIAL SEE NOTES	DRAWN HARI R	DATE 26-Aug-11	TITLE ASSEMBLY SMB, PLUG 50 OHM		Amphenol RF www.amphenolrf.com	
		ENGINEER	DATE --				
	REFERENCE AND CONFIGURATION LEVEL: In Work	APPROVED K. CAPOZZI	DATE 9/28/11	SCALE: 8.0:1.0 SHEET 2 OF 2		DRAWING NO.27-1	
		FINISH	CAD FILE	DWG SIZE B	REV U	ITEM NO.27-1 PART NO.27-1	

# Mouser Electronics

Authorized Distributor

Click to View Pricing, Inventory, Delivery & Lifecycle Information:

[Amphenol:](#)

[027-1](#)