

This document is the property of Amphenol Corporation and is delivered on the express condition that it is not to be disclosed, reproduced or used, in whole or in part, for manufacture or sale by anyone other than Amphenol Corporation without its prior consent, and that no right is granted to disclose or to use any information in this document.

The marking on this product doesn't contain environmental hazardous materials per directive 2011/65/EU & 2015/863/EU for RoHS compliant & per IEC 61249-2-21 for Halogen-Free compliant.

ORIGINAL



REVISIONS			
SYM	ECN No.	DESCRIPTION	DATE BY
A	NE-22202	RELEASE TO PRODUCTION	2022-10-13 Sondra Sang
B	NE-23037	CHANGED 3.05 TOL. FROM +/-0.20 TO BE +0.20/-0.05	2023-02-13 Sondra Sang
C	NE-23084	CORRECT POST OD TOLERANCE TO BE 1.00+/-0.05 MODIFIED SHELL ON BOTTOM VIEW	2023-05-11 Sondra Sang

PART NUMBER  
**G97RXXXXXXHR**

MINI COOL EDGE IO  
INTEGRATED CONNECTOR

RIGHT ANGLE TYPE

CONNECTOR SPEED  
2: PCIE GEN5

PIN QTY/ CHANNEL  
1: 38 PIN (4X+SB OR 6X)  
2: 74 PIN (8X+SB OR 12X)  
4: 124 PIN (16X+SB OR 20X)  
6: 148 PIN (20X+SB OR 24X)

•SB: SIDEBAND

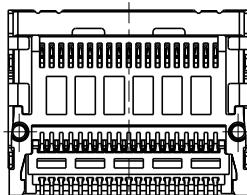
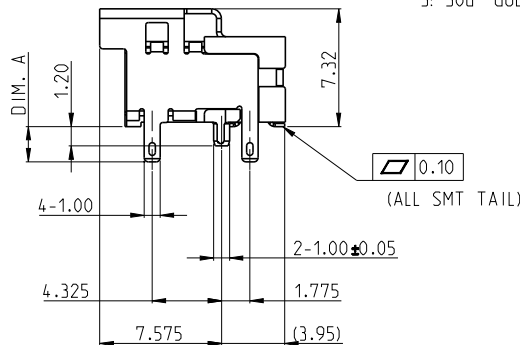
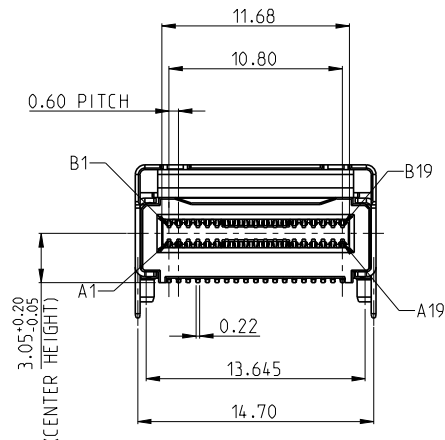
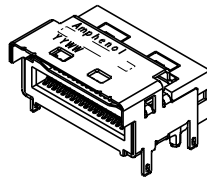
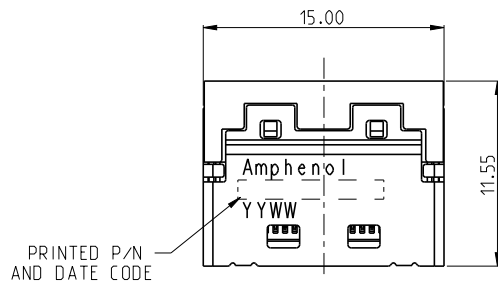
CONTACT FINISH  
2: 15u" GOLD  
3: 30u" GOLD

COMPLIANT CODE  
HR: HALOGEN FREE & RoHS

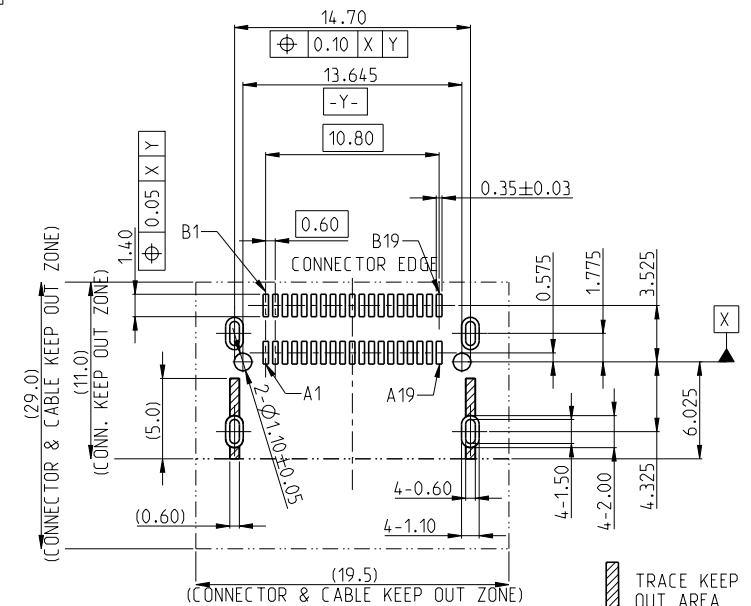
VARIATION CODE  
BLANK: STANDARD

PACKING CODE  
2: TAPE & REEL  
5: TAPE & REEL FOR CUSTOMIZED

SHELL TAIL LENGTH OPTIONS (DIM. A)  
1: 1.50 mm  
2: 2.20 mm  
3: 3.00 mm  
4: 4.20 mm  
5: 1.20 mm  
7: 2.60 mm



38 PIN



- NOTES:
- HOUSING/ SPACER: LCP, UL 94V-0, COLOR-BLACK
  - TERMINAL: COPPER ALLOY, 0.20mm THICKNESS, SELECTED GOLD PLATING ON CONTACT AREA, 100u" MIN. MATTE TIN ON SOLDERING TAIL, 50u" MIN. NICKEL UNDER-PLATING OVERALL
  - METAL SHELL: STAINLESS STEEL, 0.30mm THICKNESS, 50u" MIN. SOLDERABLE NICKEL PLATING ON SOLDERING TAIL
  - PRODUCT SPECIFICATION REFERS TO PS-7755
  - THIS PRODUCT DOESN'T CONTAIN ENVIRONMENTAL HAZARDOUS MATERIALS PER DIRECTIVE 2011/65/EU AND 2015/863/EU FOR RoHS AND PER IEC 61249-2-21 FOR HALOGEN FREE COMPLIANT.

TOLERANCE	DRAWN	APPROVALS	DATE	TITLE		UNIT		SIZE	PART No.	
X.X	DESIGNED	Sondra Sang	2023-05-11	MINI COOL EDGE IO INTEGRATED CONNECTOR 0.6 PITCH, 85 OHM RIGHT ANGLE FOR PCIE TYPE		mm		A3	G97RXXXXXXHR	
X.XX ±0.20	CHECKED	Joan Lu	2023-05-11							
X.XXX ±0.10	APPROVED	Hank Hsu	2023-05-12							
ANGULAR ±2°	DWG TYPE	CUST DWG	PROJECT CODE	T687			SCALE	NA	SHEET	1 OF 6
UNLESS OTHERWISE SPECIFIED								DWG No.	G97RXXXXXXHR	REV. C

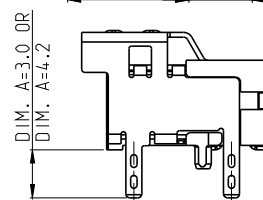
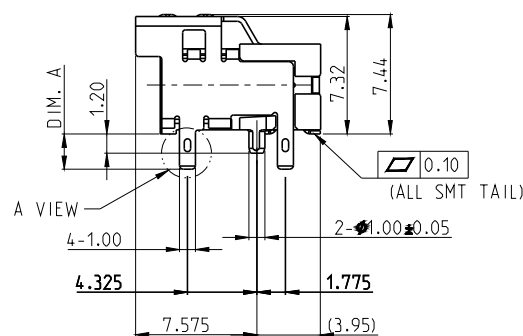
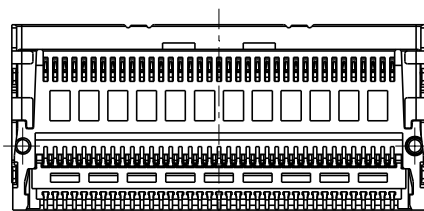
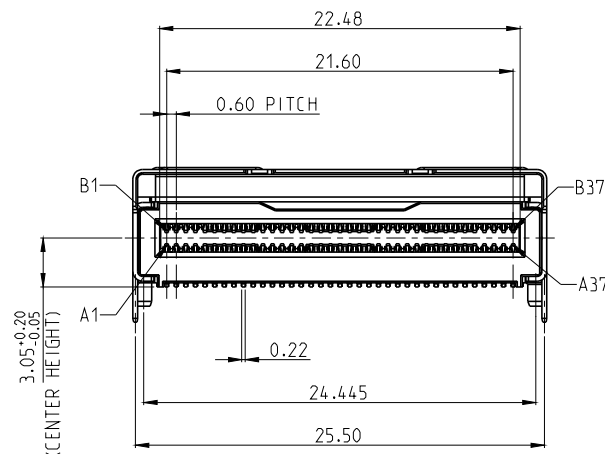
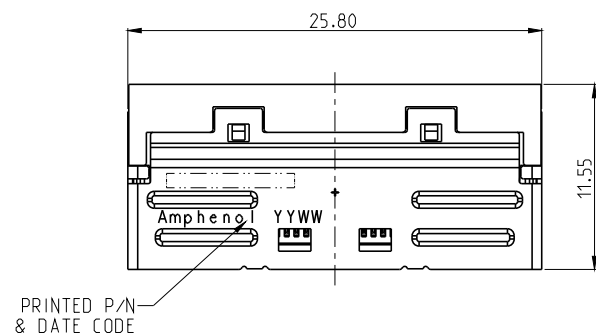
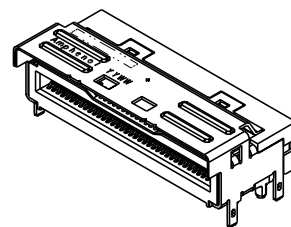
**Amphenol®**  
Amphenol Corporation  
Amphenol Taiwan Corporation

The marking on this product doesn't contain environmental hazardous materials per directive 2011/65/EU & 2015/863/EU for RoHS compliant & per IEC 61249-2-21 for Halogen-Free compliant.

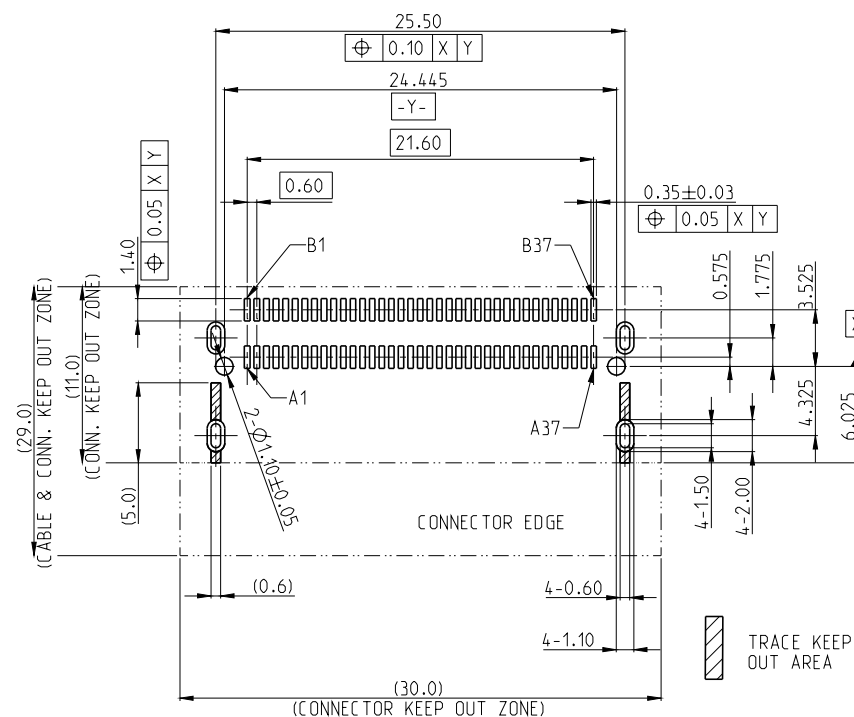
# ORIGINAL






REVISIONS				
SYM	ECN No.	DESCRIPTION	DATE	BY
A	NE-22202	RELEASE TO PRODUCTION	2022-10-13	Sondra Sang
B	NE-23037	CHANGED 3.05 TOL. FROM +/-0.20 TO BE +0.20/-0.05	2023-02-13	Sondra Sang
C	NE-23084	CORRECT POST OD TOLERANCE TO BE 1.00+/-0.05 MODIFIED SHELL ON BOTTOM VIEW	2023-05-11	Sondra Sang



A VIEW  
(SHELL TAIL LENGTH IS 3.0 & 4.2)



RECOMMENDED PCB LAYOUT (TOP VIEW)  
(GENERAL TOLERANCES:  $\pm 0.05$ )

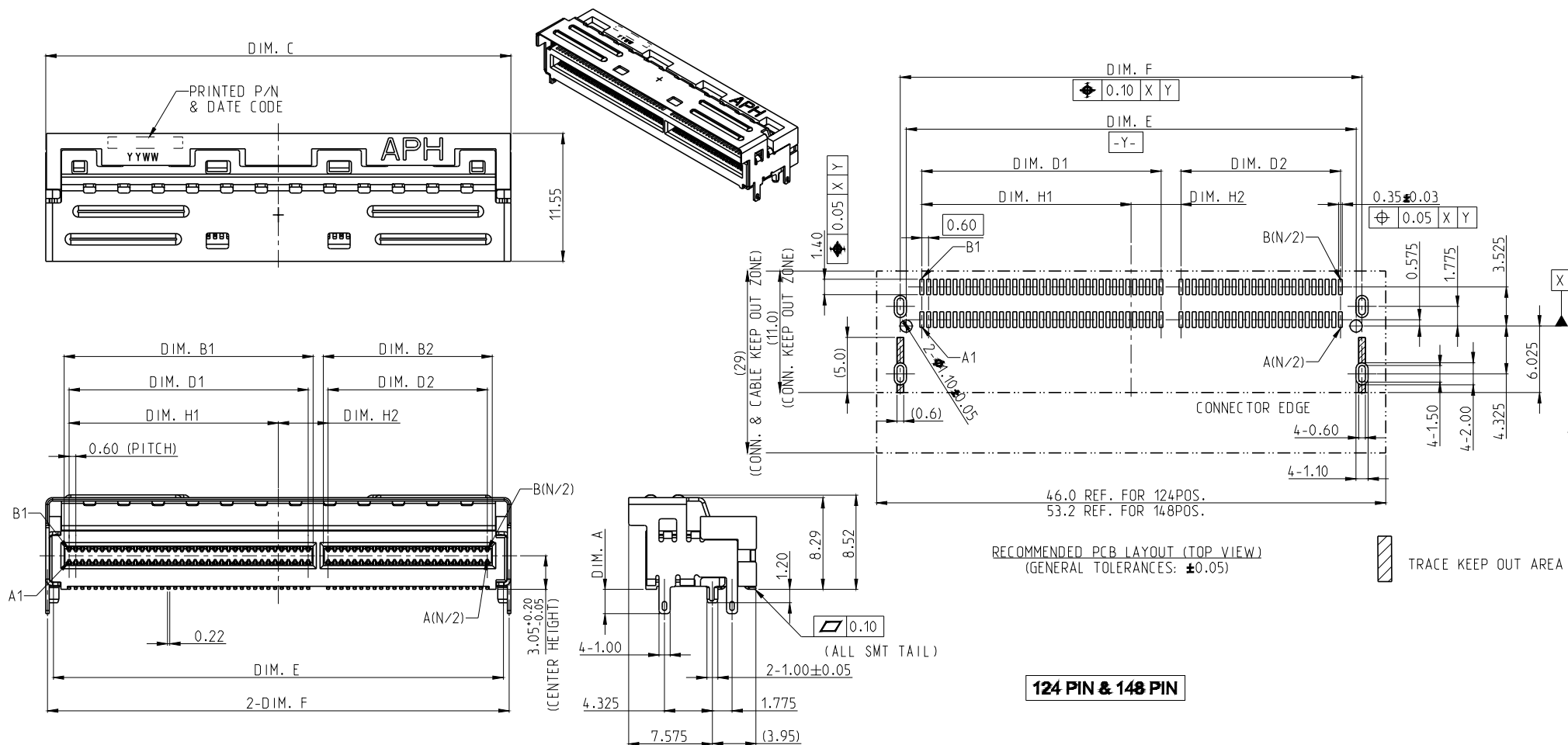
TOLERANCE		DRAWN APPROVALS		DATE	TITLE			Amphenol® Amphenol Corporation Amphenol Taiwan Corporation						
X. X.X ±0.30 X.XX ±0.20 X.XXX ±0.10	DESIGNED	Sondra Sang		2023-05-11	MINI COOL EDGE IO INTEGRATED CONNECTOR 0.6 PITCH, 85 OHM RIGHT ANGLE FOR PCIE TYPE									
	CHECKED	Joan Lu		2023-05-11										
	APPROVED	Hank Hsu		2023-05-12										
ANGULAR ±2°						UNIT	mm	SIZE	A3	PART No.	G97RXXXXXXHR			
UNLESS OTHERWISE SPECIFIED	DWG TYPE	CUST DWG		PROJECT CODE	T687		SCALE	NA	SHEET	2 OF 6	DWG No.	G97RXXXXXXHR	REV.	C

The marking on this product doesn't contain environmental hazardous materials per directive 2011/65/EU & 2015/863/EU for RoHS compliant & per IEC 61249-2-21 for Halogen-Free compliant.



# ORIGINAL



REVISIONS			
SYM	ECN No.	DESCRIPTION	DATE BY
A	NE-22202	RELEASE TO PRODUCTION	2022-10-13 Sondra Sang
B	NE-23037	CHANGED 3.05 TOL. FROM +/-0.20 TO BE +/-0.20/-0.05	2023-02-13 Sondra Sang
C	NE-23084	CORRECT POST OD TOLERANCE TO BE 1.00 +/-0.05 MODIFIED SHELL ON BOTTOM VIEW	2023-05-11 Sondra Sang



PART NUMBER	POS. (N)	DIM. B1	DIM. B2	DIM. C	DIM. D1	DIM. D2	DIM. E	DIM. F	DIM. H1	DIM. H2
G97RX4XXXXHR	124	22.48	15.28	42.00	21.60	14.40	40.645	41.70	18.90	4.50
G97RX6XXXXHR	148	22.48	22.48	49.20	21.60	21.60	47.845	48.90	22.50	0.90

TOLERANCE	DRAWN APPROVALS		DATE	TITLE			<div>Amphenol®</div> <div>Amphenol Corporation</div> <div>Amphenol Taiwan Corporation</div>					
X. X.X ±0.30 X.XX ±0.20 X.XXX ±0.10	DESIGNED	Sondra Sang	2023-05-11	<div>MINI COOL EDGE IO INTEGRATED CONNECTOR 0.6 PITCH, 85 OHM RIGHT ANGLE FOR PCIE TYPE</div>								
	CHECKED	Joan Lu	2023-05-11									
	APPROVED	Hank Hsu	2023-05-12									
ANGULAR ±2°					UNIT mm	SIZE A3	PART No.	G97RXXXXXXHR				
UNLESS OTHERWISE SPECIFIED	DWG TYPE	CUST DWG		PROJECT CODE	T687			SCALE NA	SHEET 3 OF 6	DWG No.	G97RXXXXXXHR	REV. C

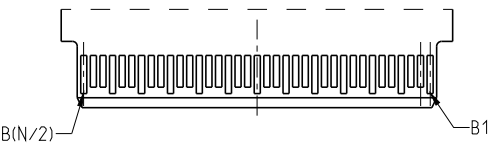
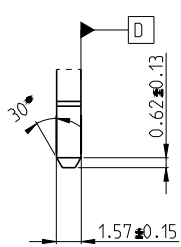
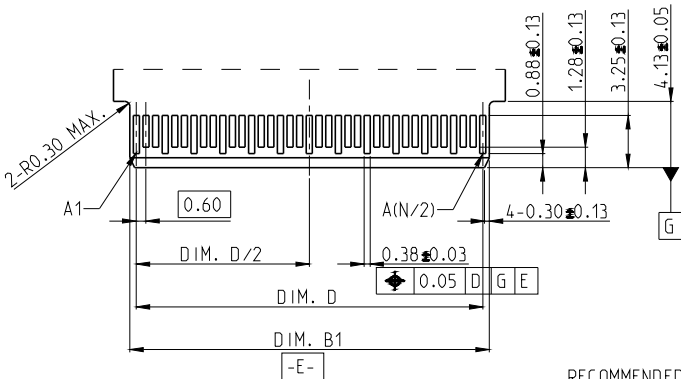
This document is the property of Amphenol Corporation and is delivered on the express condition that it is not to be disclosed, reproduced or used, in whole or in part, for manufacture or sale by anyone other than Amphenol Corporation without its prior consent, and that no right is granted to disclose or to use any information in this document.

The marking on this product doesn't contain environmental hazardous materials per directive 2011/65/EU & 2015/863/EU for RoHS compliant & per IEC 61249-2-21 for Halogen-Free compliant.

ORIGINAL

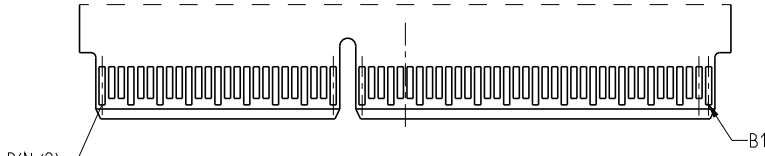
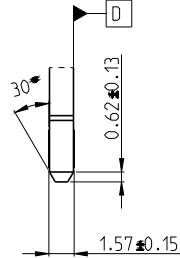
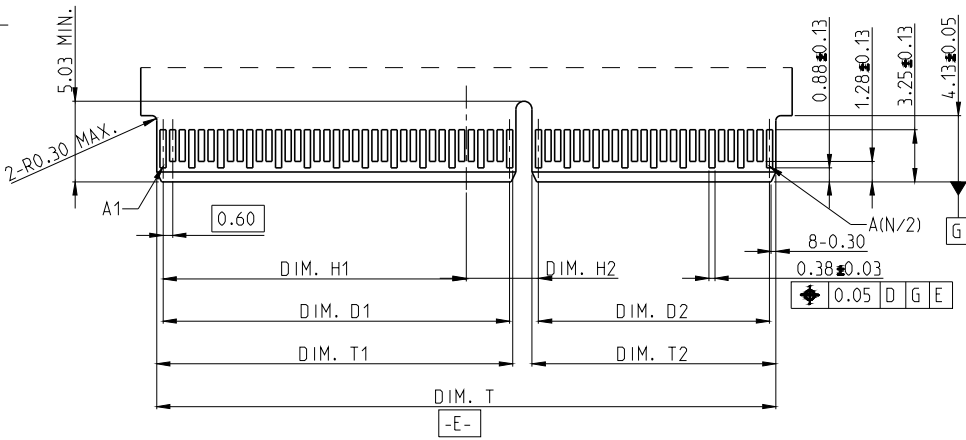


REVISIONS			
SYM	ECN No.	DESCRIPTION	DATE
A	NE-22202	RELEASE TO PRODUCTION	2022-10-13
B	NE-23037	CHANGED 3.05 TOL. FROM +/-0.20 TO BE +0.20/-0.05	2023-02-13
C	NE-23084	CORRECT POST OD TOLERANCE TO BE 1.00+/-0.05 MODIFIED SHELL ON BOTTOM VIEW	2023-05-11





RECOMMENDED MATING CARD (38PIN & 74PIN)  
(GENERAL TOLERANCES: ±0.05)

PART NUMBER	POS. (N)	DIM. B1	DIM. D
G97RX1XXXXHR	38	11.60	10.80
G97RX2XXXXHR	74	22.40	21.60



PART NUMBER	POS. (N)	DIM. D1	DIM. D2	DIM. H1	DIM. H2	DIM. T	DIM. T1	DIM. T2
G97RX4XXXXHR	124	21.60	14.40	18.90	4.50	38.60	22.40	15.20
G97RX6XXXXHR	148	21.60	21.60	22.50	0.90	45.80	22.40	22.40

RECOMMENDED MATING CARD (124PIN & 148PIN)  
(GENERAL TOLERANCES: ±0.05)

TOLERANCE		DRAWN APPROVALS		DATE	TITLE				Amphenol®  Amphenol Corporation Amphenol Taiwan Corporation						
X. X.X X.XX X.XXX	±0.30	DESIGNED	Sondra Sang	2023-05-11	MINI COOL EDGE IO INTEGRATED CONNECTOR 0.6 PITCH, 85 OHM RIGHT ANGLE FOR PCIE TYPE				PART No. G97RXXXXXXHR						
	±0.20	CHECKED	Joan Lu	2023-05-11											
	±0.10	APPROVED	Hank Hsu	2023-05-12											
ANGULAR ±2°		DWG TYPE		CUST DWG	PROJECT CODE		T687			UNIT	mm	SIZE	A3	DWG No. G97RXXXXXXHR	
UNLESS OTHERWISE SPECIFIED								SCALE	NA	SHEET	4 OF 6	REV. C			

Amphenol®  
Amphenol Corporation  
Amphenol Taiwan Corporation

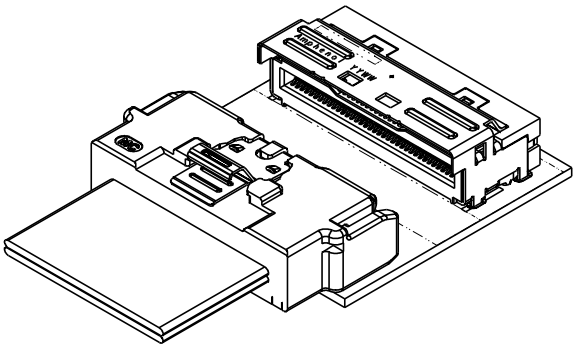
This document is the property of Amphenol Corporation and is delivered on the express condition that it is not to be disclosed, reproduced or used, in whole or in part, for manufacture or sale by anyone other than Amphenol Corporation without its prior consent, and that no right is granted to disclose or to use any information in this document.

The marking on this product doesn't contain environmental hazardous materials per directive 2011/65/EU & 2015/863/EU for RoHS compliant & per IEC 61249-2-21 for Halogen-Free compliant.

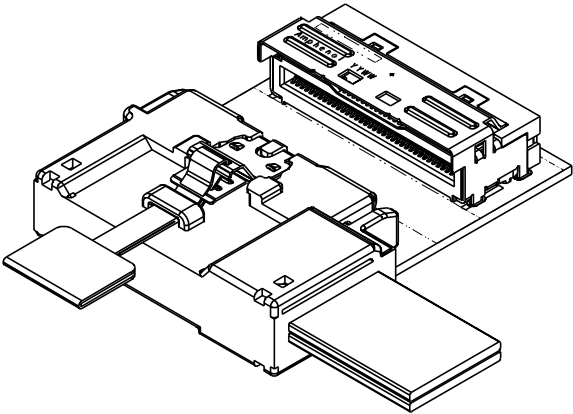
ORIGINAL



REVISIONS				
SYM	ECN No.	DESCRIPTION	DATE	BY
A	NE-22202	RELEASE TO PRODUCTION	2022-10-13	Sondra Sang
B	NE-23037	CHANGED 3.05 TOL. FROM +/-0.20 TO BE +0.20/-0.05	2023-02-13	Sondra Sang
C	NE-23084	CORRECT POST OD TOLERANCE TO BE 1.00 +/-0.05 MODIFIED SHELL ON BOTTOM VIEW	2023-05-11	Sondra Sang



RECEPTACLE- RIGHT ANGLE TYPE



RECEPTACLE- RIGHT ANGLE TYPE

PLUG- SIDE ENTRY TYPE

PLUG- STRAIGHT TYPE

RECOMMENDED MATING STYLE

TOLERANCE		APPROVALS		DATE	TITLE				<div>Amphenol®</div> <div>Amphenol Corporation</div> <div>Amphenol Taiwan Corporation</div>			
X. X.X ±0.30 X.XX ±0.20 X.XXX ±0.10	DESIGNED Sondra Sang		2023-05-11		MINI COOL EDGE 10 INTEGRATED CONNECTOR 0.6 PITCH, 85 OHM RIGHT ANGLE FOR PCIE TYPE							
	CHECKED Joan Lu		2023-05-11									
	APPROVED Hank Hsu		2023-05-12									
ANGULAR ±2°		DWG TYPE CUST DWG		PROJECT CODE T687				UNIT mm	SIZE A3	PART No. G97RXXXXXXHR		
UNLESS OTHERWISE SPECIFIED								SCALE NA	SHEET 5 OF 6	DWG No. G97RXXXXXXHR		REV. C

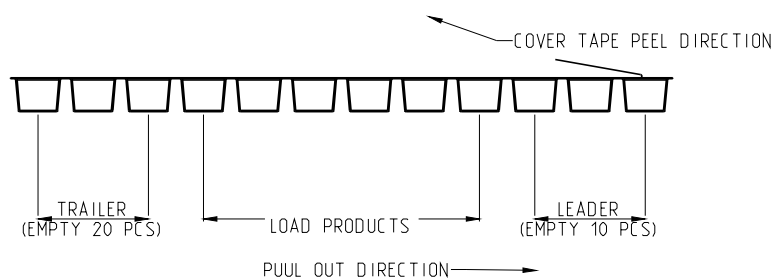
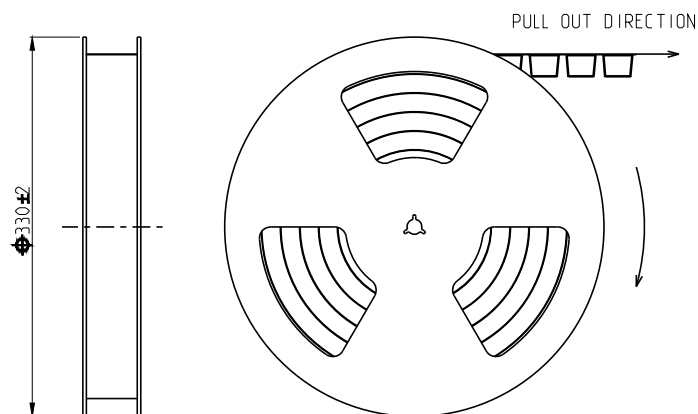
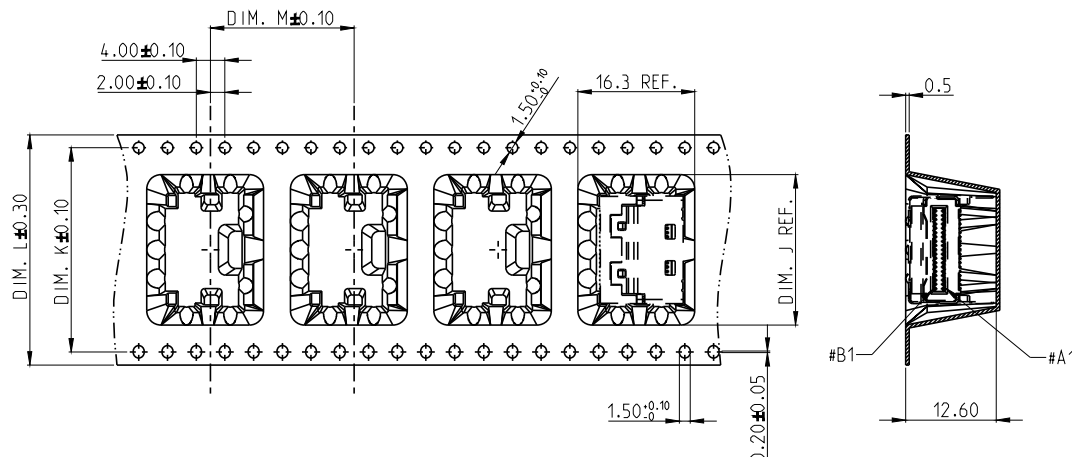
The marking on this product doesn't contain environmental hazardous materials per directive 2011/65/EU & 2015/863/EU for RoHS compliant & per IEC 61249-2-21 for Halogen-Free compliant.

# ORIGINAL

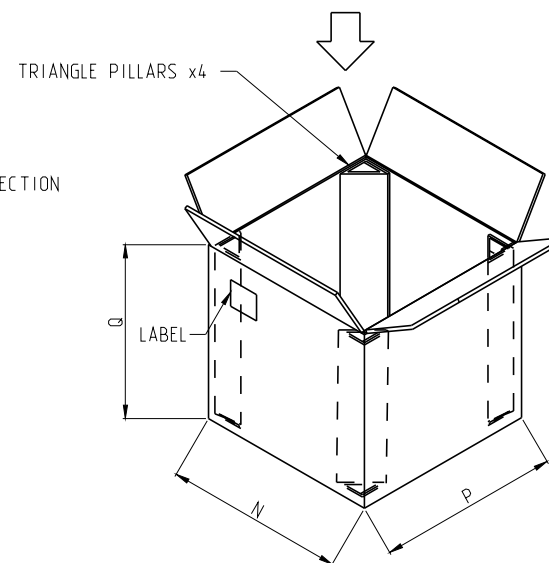
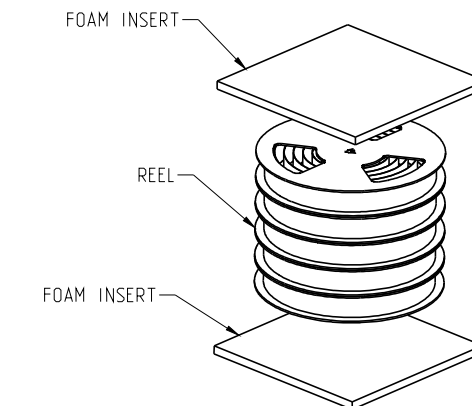


REVISIONS				
SYM	ECN No.	DESCRIPTION	DATE	BY
A	NE-22202	RELEASE TO PRODUCTION	2022-10-13	Sondra Sang
B	NE-23037	CHANGED 3.05 TOL. FROM +/-0.20 TO BE +/-0.20/-0.05	2023-02-13	Sondra Sang
C	NE-23084	CORRECT POST OD TOLERANCE TO BE 1.00+/-0.05 MODIFIED SHELL ON BOTTOM VIEW	2023-05-11	Sondra Sang

PART NUMBER	POS. (N)	DIM. J	DIM. K	DIM. L	DIM. M	REEL (PC S)	CARTON (PC S)	N x P x Q (mm)
G97RX1XXXXHR	38	(20.9)	28.40	32.00	20.00	225	1350	355x355x265
G97RX2XXXXHR	74	(32.5)	40.40	44.00	20.00	250	1250	355x355x290
G97RX4XXXXHR	124	(39.5)	68.40	72.00	20.00	220	660	355x355x290
G97RX6XXXXHR	148	(49.4)	68.40	72.00	20.00	220	660	355x355x290





NOTE 2:  
1. CARTON SIZE  
340L X 340W X 265H  
2. PREFER TO AMTA LABELING STANDARD.  
3. CARTON CLOSURES MUST BE SEALS WITH TAPE.



NOTE :

- 1.MATERIAL:  
CARRIER TAPE: POLYSTYRENE, BLACK  
COVER TAPE: TRANSPARENT POLYSTYRENE  
REEL: POLYSTYRENE, BLACK
2. ALL TAPE AND REEL SPECIFICATION FOLLOW EIA-481 STANDARD.
3. THIS PRODUCT DOESN'T CONTAIN ENVIRONMENTAL HAZRODOUS  
DIRECTIVE 2011/65/EU AND 2015/863/EU FOR RoHS AND  
PER IEC 61249-2-21 FOR HALOGEN FREE COMPLIANT.

TOLERANCE	DRAWN APPROVALS	DATE	TITLE			<h1>Amphenol®</h1> <p><b>Amphenol Corporation</b> <b>Amphenol Taiwan Corporation</b></p>		
X. X.X ±0.30 X.XX ±0.20 X.XXX ±0.10	DESIGNED Sondra Sang	2023-05-11	MINI COOL EDGE IO INTEGRATED CONNECTOR 0.6 PITCH, 85 OHM RIGHT ANGLE FOR PCIE TYPE					
	CHECKED Joan Lu	2023-05-11						
	APPROVED Hank Hsu	2023-05-12						
ANGULAR ±2°				UNIT mm	SIZE A3	PART No. G97RXXXXXXHR		
UNLESS OTHERWISE SPECIFIED	DWG TYPE CUST DWG	PROJECT CODE T687		SCALE NA	SHEET 6 OF 6	DWG No. G97RXXXXXXHR		REV. C

# Mouser Electronics

Authorized Distributor

Click to View Pricing, Inventory, Delivery & Lifecycle Information:

[Amphenol:](#)

[G97R26322HR](#) [G97R26332HR](#)