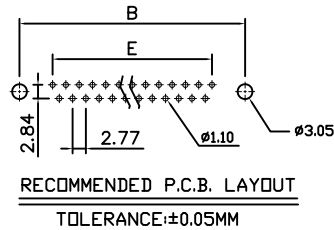
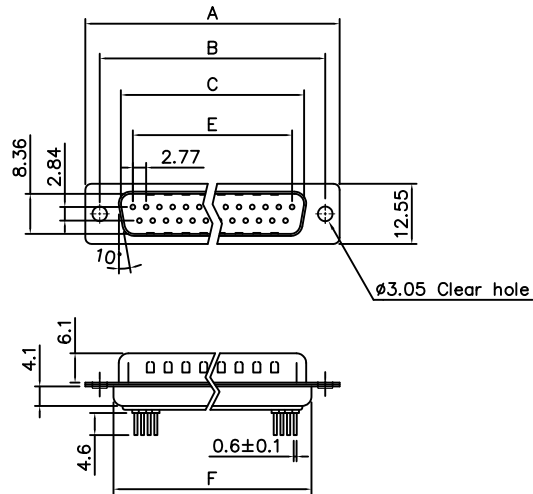


This document is the property of Amphenol Corporation and is delivered on the express condition that it is not to be disclosed, reproduced or used, in whole or in part, for manufacture or sale by anyone other than Amphenol Corporation without its prior consent, & that no right is granted to disclose or to use any information in this document.

Customer Drawing



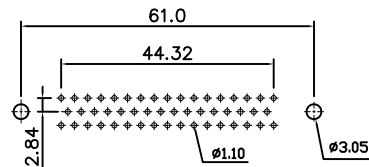
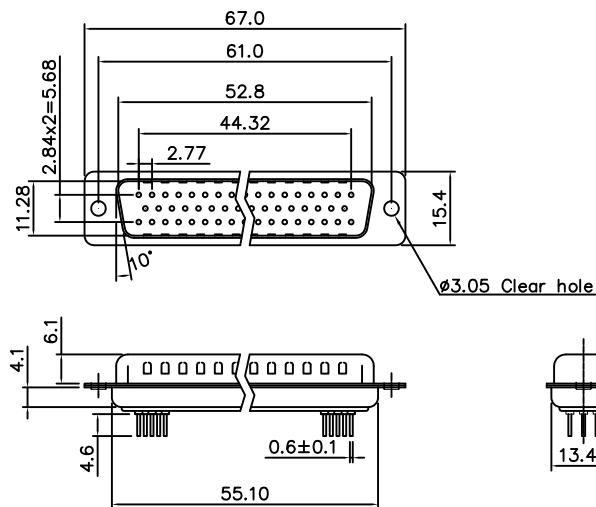
RECOMMENDED P.C.B. LAYOUT
TOLERANCE:±0.05MM



09,15,25,37 POSITIONS

Dimensions

Shell size	Positions	A	B	C	E	F
E	9	30.81	24.99	16.92	11.08	19.20
A	15	39.20	33.30	25.25	19.39	27.70
B	25	53.04	47.04	38.96	33.24	41.10
C	37	69.40	63.50	55.42	49.86	57.30



RECOMMENDED P.C.B. LAYOUT
TOLERANCE:±0.05MM

50 POSITIONS

REVISIONS

SYM	ECN	DESCRIPTION	DATE	APPROVED
1	HK--	First Release Drawing	03/15/17	Tony.Tang
2	HK--	Added pin OD	11/07/22	Tony.Tang

D-SUB TECHNICAL DATA

SHELL : Steel, 100u" min tin over 50u" min nickel over 50u" copper
BODY : Glass-Filled Thermoplastic PBT,UL94V-0 Black.
CONTACTS : Copper Alloy
Gold flash over 50u" min nickel on mating area.
100u" min tin over 50u" min nickel on solder area.
ELECTRICAL : Voltage rating 250 V Rms.
Current rating 3A.
Withstanding Voltage >1000 V Rms
Insulation resistance >1000 M Ohms
Contact resistance 20 mOhms max.
MARKING : Amphenol...(Series No.)
Commercial reference
Manufacturing date

PRODUCT CODE

L 717 SD X XX P OL2 R210

L: RoHS compliance

SD:Standard density

Shell Size :E,A,B,C,D

Configuration:
09,15,25,37,50

R210=Rubber marking

Termination:
Straight for PCB

Contact type:
P: Pin

UNLESS OTHERWISE SPECIFIED TOLERANCES		APPROVAL	DATE
U.S.	METRIC	DRAWN	DATE
.X +/-	0.50	CHECKED	DATE
.XX +/-	0.30	CHECKED	DATE
.XXX +/-	0.20	CHECKED	DATE
FRACTIONS +/-	5'		
ANGLES +/-			
FOR MATERIALS AND FINISHES SEE NOTES		DRAWING FILE :	
REMOVE SHARP EDGES		ANGLE OF PROJECTION	
DIMENSIONS			
U.S.	INCHES		
METRIC	MM		

Amphenol

TITLE
D-SUB connector, SD Series

SIZE	DRAWING NO.	REV.
A4	L717SDXXXPOL2R210	2
SCALE	NONE	SHEET 1 OF 1

Mouser Electronics

Authorized Distributor

Click to View Pricing, Inventory, Delivery & Lifecycle Information:

[Amphenol:](#)

[L717SDB25POL2R210](#)