

4

3

2

DWG NO.  
GE-2157


SH  
1

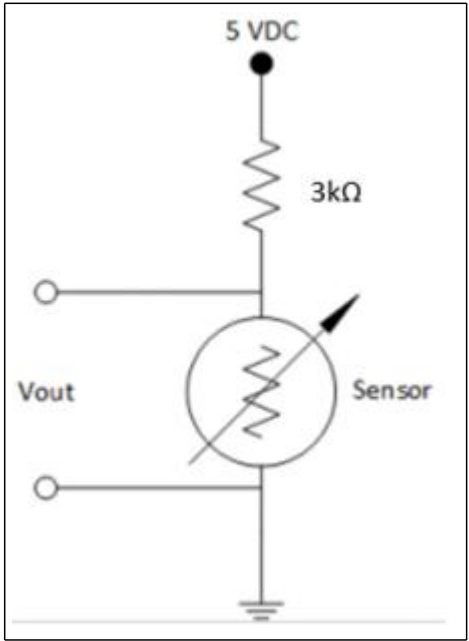
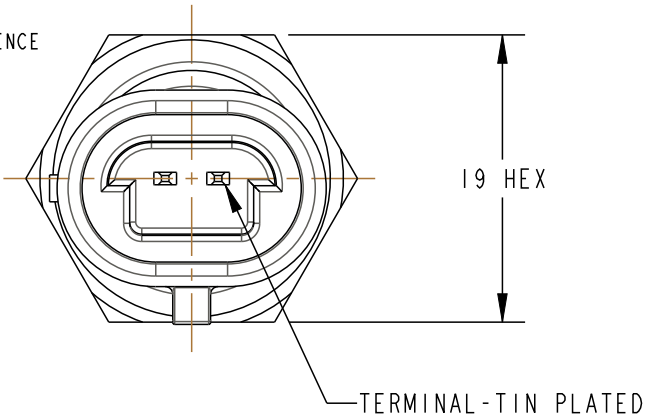
REV  
D

1

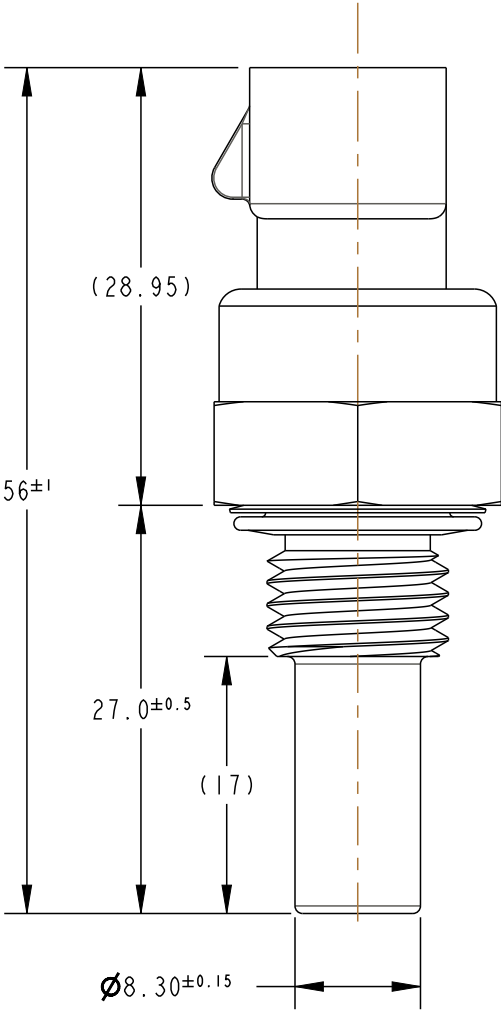
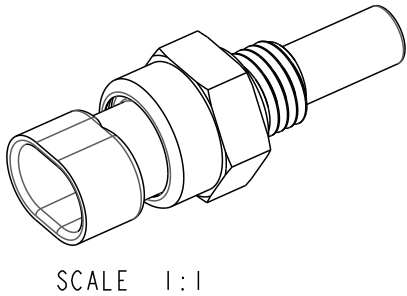
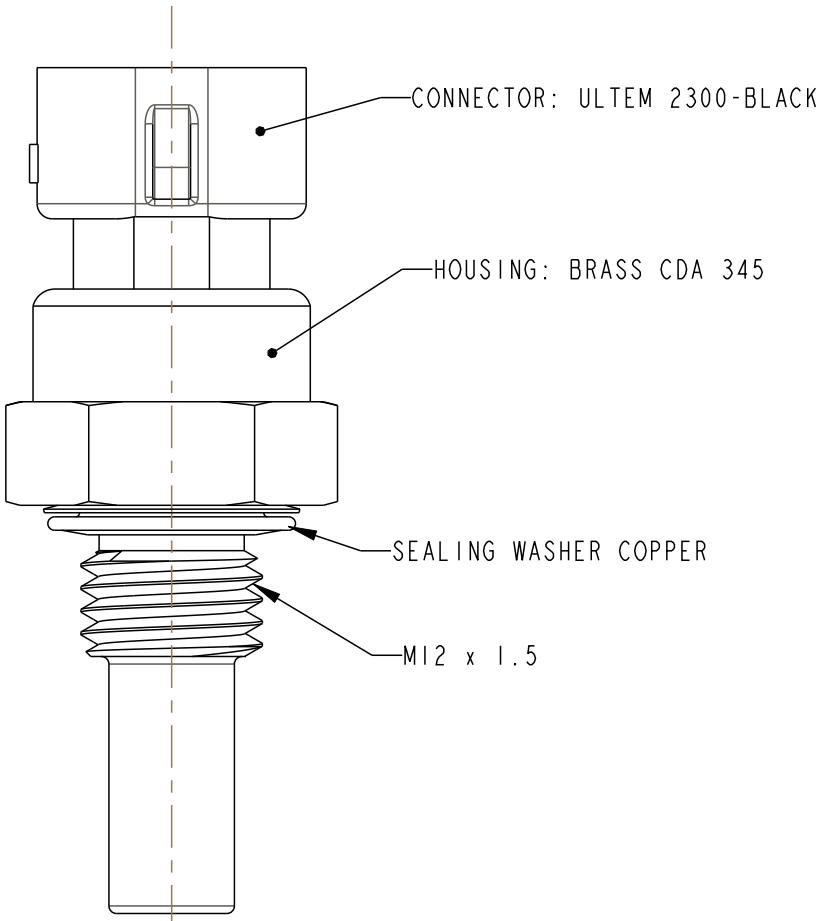
PROPRIETARY NOTICE: THE INFORMATION CONTAINED IN THIS DOCUMENT IS PROPRIETARY TO AMPHENOL AND SHALL NOT BE DISCLOSED IN WHOLE OR IN PART IN ANY FORM OR FOR ANY REASON EXCEPT AS EXPRESSLY STATED IN WRITING BY AMPHENOL.



NOTES:

- CONTINUOUS OPERATING TEMPERATURE -40°C TO 150°C
- CONNECTOR: METRI-PACK 150.2 OR GT150 3.5mm  MATING APTIV(DEPLH) NUMBER:12162193,15336004, OR EQUIVILANT
- VOLTAGE: 5V
- SENSOR INSTALATION TORQUE: TIGHTEN PROBES TO 20Nm TO 25Nm REFERENCE
- LOCTITE 503,516 OR 517 THREAD SEALANT APPLIED TO THE THREADS



TYPICAL 25°C CIRCUIT



Amphenol					
Advanced Sensors		St. Marys, PA 15857			
TITLE					
FLUID TEMPERATURE SENSOR					
UNLESS OTHERWISE SPECIFIED DIMENSIONS ARE IN MM TOLERANCES ARE:  .X ± 0.5                      ANGLES .XX ± 0.25                   ± 2°		APPROVALS		DATE	
		DRAWN                      DAM/MED		06/01/18	
		CHECKED                   STS		06/01/2018	
DO NOT SCALE DRAWING		ENGR                      JD		06/01/2018	
THIRD ANGLE PROJECTION					
INTERPRET DRAWING IAW ASME Y14.5				QC	
MATERIAL                      SEE DRAWING				MFG	
SIZE		DWG NO.		REV	
B		GE-2157		D	
SCALE 2:1				SHEET 1 OF 1	

LEGAL NOTICE - THIS DRAWING AND ANY INTELLECTUAL PROPERTY RIGHTS THERE IN ARE PROPERTY OF AMPHENOL AND NO LICENSES ARE GRANTED UNDER THOSE RIGHTS.

4

3

2

1

# Mouser Electronics

Authorized Distributor

Click to View Pricing, Inventory, Delivery & Lifecycle Information:

[Amphenol:](#)

[GE-2157](#)