

4

3

2

DWG NO.
GE-2156


SH
1

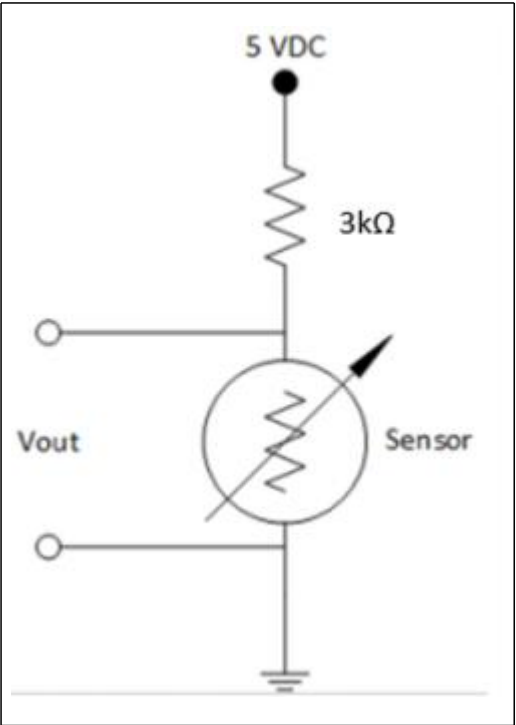
REV
C

1

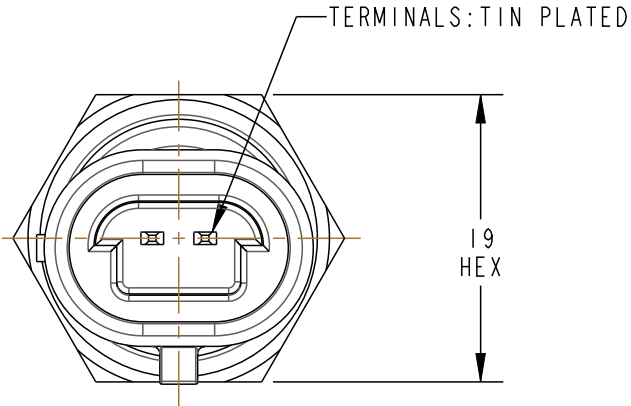
PROPRIETARY NOTICE: THE INFORMATION CONTAINED IN THIS DOCUMENT IS PROPRIETARY TO AMPHENOL AND SHALL NOT BE DISCLOSED IN WHOLE OR IN PART IN ANY FORM OR FOR ANY REASON EXCEPT AS EXPRESSLY STATED IN WRITING BY AMPHENOL.

NOTES:

1. CONTINUOUS OPERATING TEMPERATURE -40°C TO 150°C
2. CONNECTOR: METRI-PACK 150.2 OR GT150 3.5mm  MATING APTIV(DEPLHI) NUMBER: 12162193,15336004, OR EQUIVILANT
- 3 VOLTAGE: 5V
4. NEEDS A SEALING GASKET, A COPPER CRUSH WASHER OR POSSIBLY AN O-RING.
5. RECOMENDED INSTALLATION TORQUE OF 25 NM, REFERENCE.

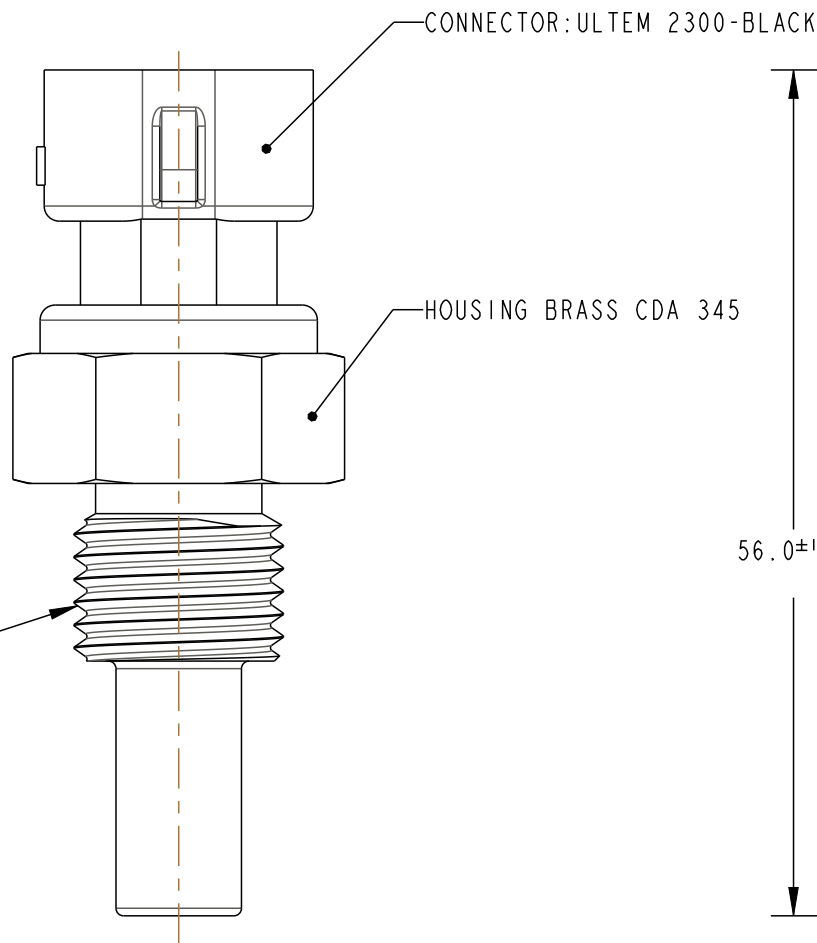


TYPICAL, 25°C CIRCUIT



TERMINALS:TIN PLATED

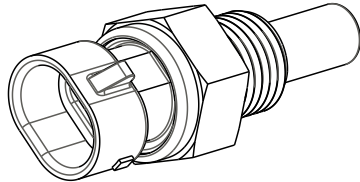
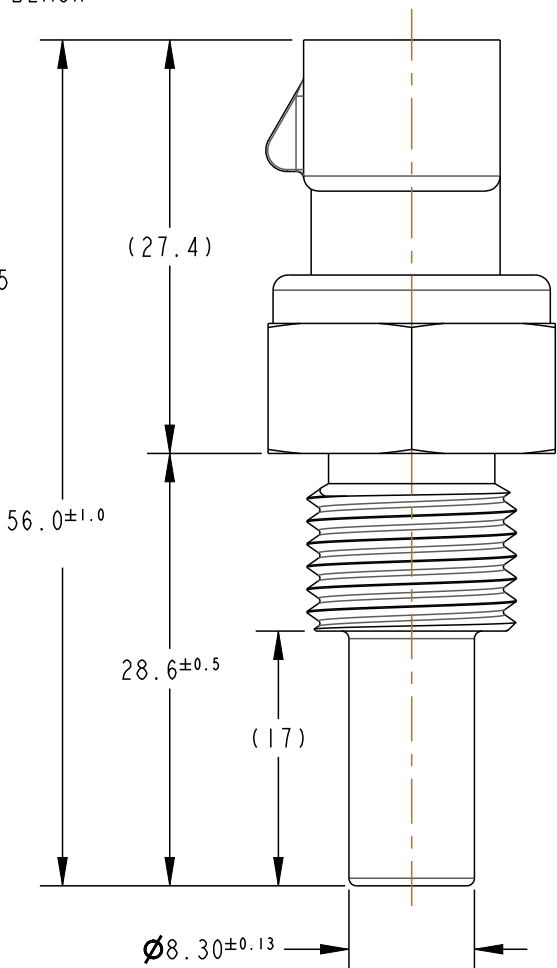
19
HEX



CONNECTOR:ULTEM 2300-BLACK

HOUSING BRASS CDA 345

M14 x 1.5



SCALE 1:1

Amphenol

Advanced Sensors

St. Marys, PA 15857

TITLE				
FLUID TEMPERATURE SENSOR				
UNLESS OTHERWISE SPECIFIED DIMENSIONS ARE IN MM TOLERANCES ARE: .X ± 0.5 .XX ± 0.25		APPROVALS		DATE
		DRAWN	DAM/MED	05/31/18
		CHECKED	STS	05/31/18
DO NOT SCALE DRAWING		ENGR	JJD	05/31/18
THIRD ANGLE PROJECTION		QC		
INTERPRET DRAWING IAW ASME Y14.5		MFG		
MATERIAL SEE DRAWING				
SIZE B		DWG NO. GE-2156		REV C
SCALE 1:1				SHEET 1 OF 1

LEGAL NOTICE - THIS DRAWING AND ANY INTELLECTUAL PROPERTY RIGHTS THERE IN ARE PROPERTY OF AMPHENOL AND NO LICENSES ARE GRANTED UNDER THOSE RIGHTS

4

3

2

1

Mouser Electronics

Authorized Distributor

Click to View Pricing, Inventory, Delivery & Lifecycle Information:

[Amphenol:](#)

[GE-2156](#)