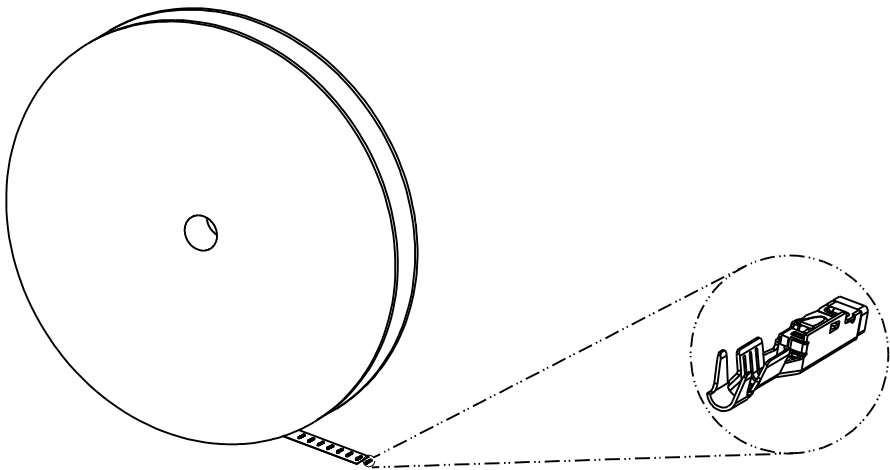
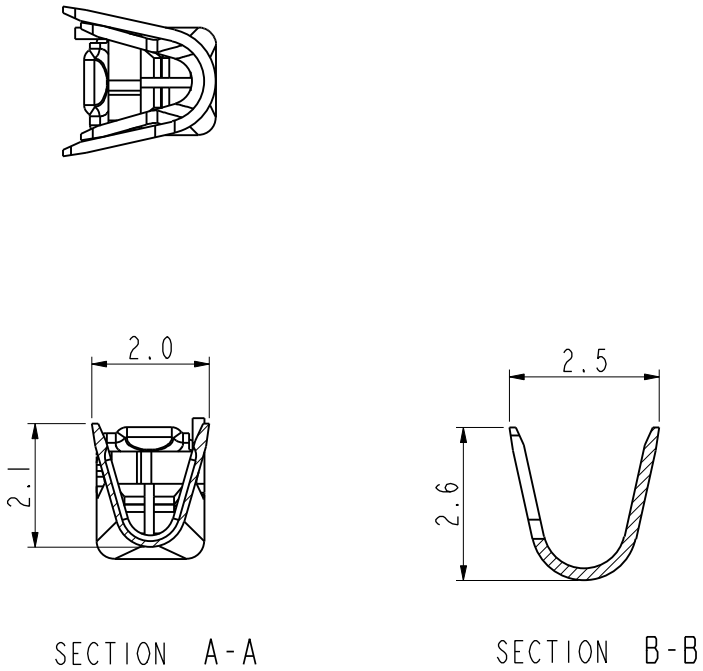
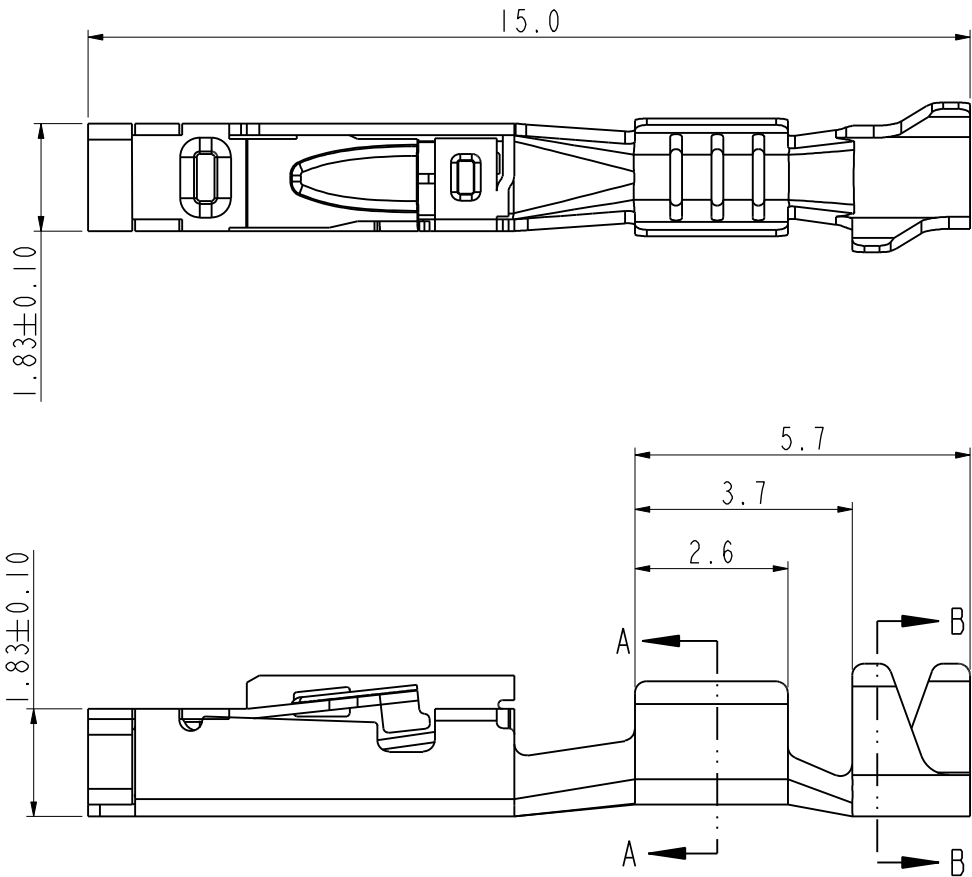


REV	ECN	DESCRIPTION	DATE	MODIFIED
A		FIRST RELEASE	2018.06.25	ROY.QU
B	C3331N	ADD CABLE INSULATION	2019.05.16	ROY.QU

Amphenol PCDSZ
ORIGINAL
PDF Format
R&D



安费诺精密连接器(深圳)有限公司
Amphenol PCD Shenzhen
受 控 文 件
2019年5月21日

- TECHNICAL FEATURES
- 1.MATERIAL:COPPER ALLOY
 - 2.CONTACT FINISH:TIN PLATED
 3. WIRE SIZE RANGE:0.35~0.75 MM²
INSULATION OD: ϕ 1.1~ ϕ 1.75MM
 - 4.CURRENT CARRYING CAPACITY:
UP TO 5 AMPERE (AT 20° C AMBIENT TEMPERATURE)

DIMENSIONS	TOLERANCES	PROJECTION	Amphenol Pcd Shenzhen		TITLE 12*0.6 FEMALE PIN				
ANSI Y14.5M	.X ±0.5		ENGR						
UNITS: MM	.XX ±0.05		ROY.QU 2018.06.25						
Pro/E FILE	ANGLES ±0.5°				SIZE	DWG NO.		REV	
ORIGINAL	THIS DOCUMENT CONTAINS PROPRIETARY INFORMATION WHICH IS THE CONFIDENTIAL PROPERTY OF AMPHENOL PCD SHENZHEN		CHKD		A3	C-C310003614S		B	
			APPD						
					CODE: 58982	SCALE: 2:1	SHEET 1 OF 1		

Mouser Electronics

Authorized Distributor

Click to View Pricing, Inventory, Delivery & Lifecycle Information:

[Amphenol:](#)

[C310003614S](#)