

GSD

M39012/28-0022

REVISIONS

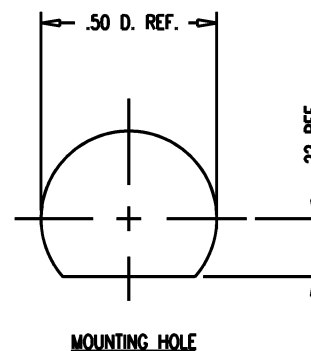
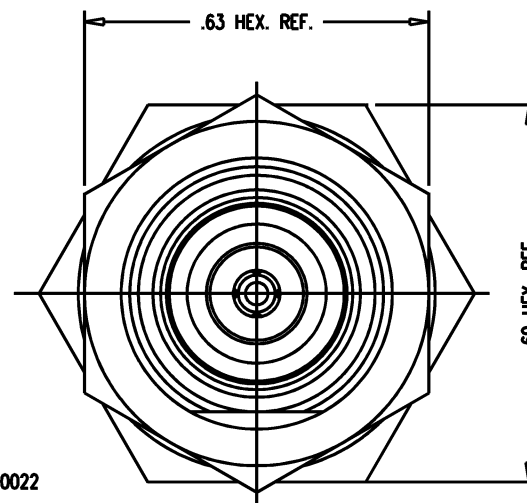
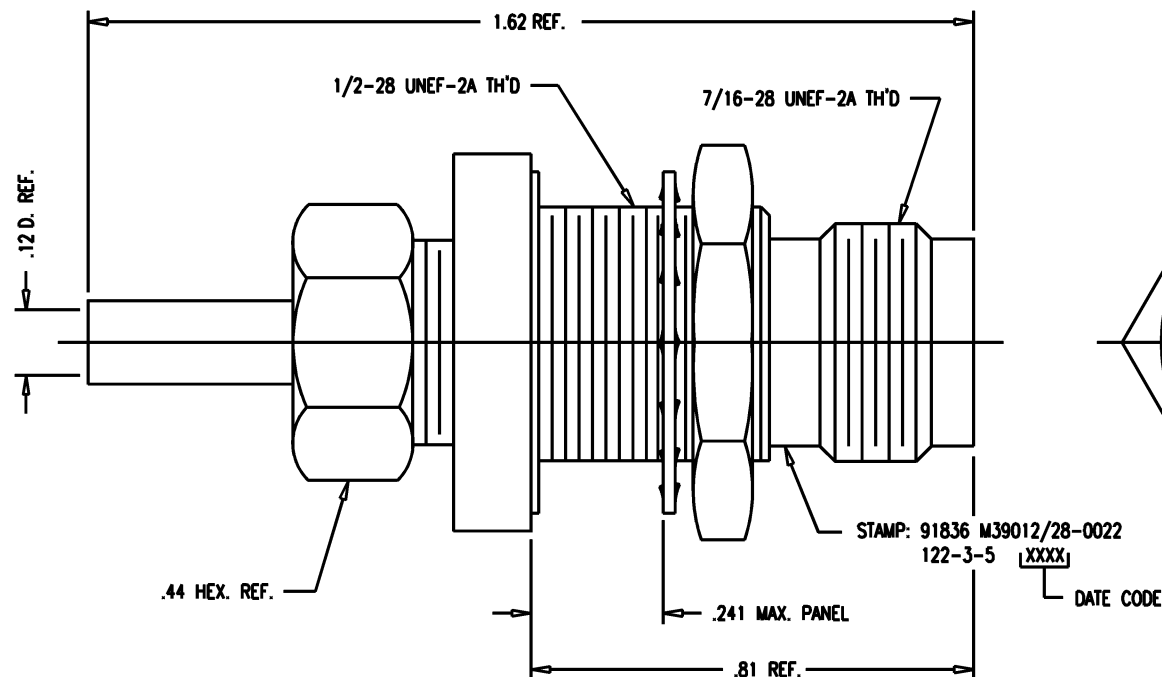
ISSUE	CHANGES
1	CN 32302 A LNM 06/20/90

KAM5825

SCALE	4:1
APPROX SURFACE AREA	122-3-5
USED ON	
REF:	
JACK, BULKHEAD, TNC	
DRAWN KH	DATE 06/23/95
DESIGN MJB	DATE 06/26/95
APPR.	DATE

KINGS
ELECTRONICS CO., INC.
TUCKAHOE, NEW YORK 10707

M39012/28-0022



NOTES:

- FOR USE WITH M17/119-RG174 & M17/113-RG316 CABLE.
- FOR CABLING INSTRUCTIONS SEE CP-465.
- FOR CRIMPING USE DIE KTH-2011.
- INTERFACE PER MIL-STD-348, FIG. 313-2.
- MATERIALS:
INSULATOR: TEFLON, ASTM-D-4894
CENTER CONTACT: BER. COPPER, ASTM-B-196
GASKET: SILICONE RUBBER, ZZ-R-750
LOCKWASHER: PHOSPHOR BRONZE, ASTM-B-103
K-GRIP SLEEVE: COM. BRONZE, ASTM-B-140
ALL OTHER METAL PARTS: BRASS, ASTM-B16
- FINISHES:
CENTER CONTACT: GOLD PLATE, PER MIL-G-45204
ALL OTHER METAL PARTS: SILVER PLATE PER QQ-S-365
- ELECTRICAL CHARACTERISTICS:
NOMINAL IMPEDANCE: 50 OHMS
WORKING VOLTAGE: 500 VRMS
FREQUENCY RANGE: DC TO 11 GHz

GSD

Mouser Electronics

Authorized Distributor

Click to View Pricing, Inventory, Delivery & Lifecycle Information:

[Amphenol:](#)

[M39012/28-0022](#)