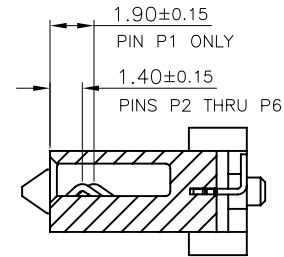
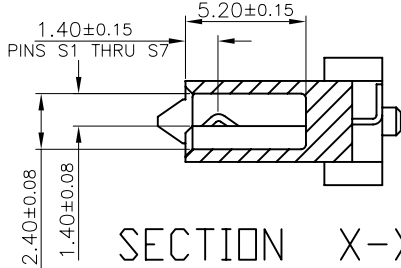
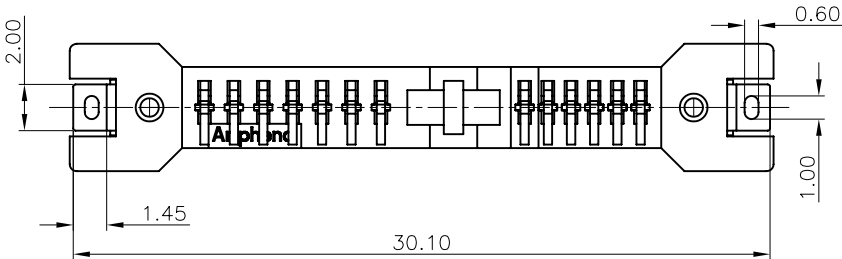
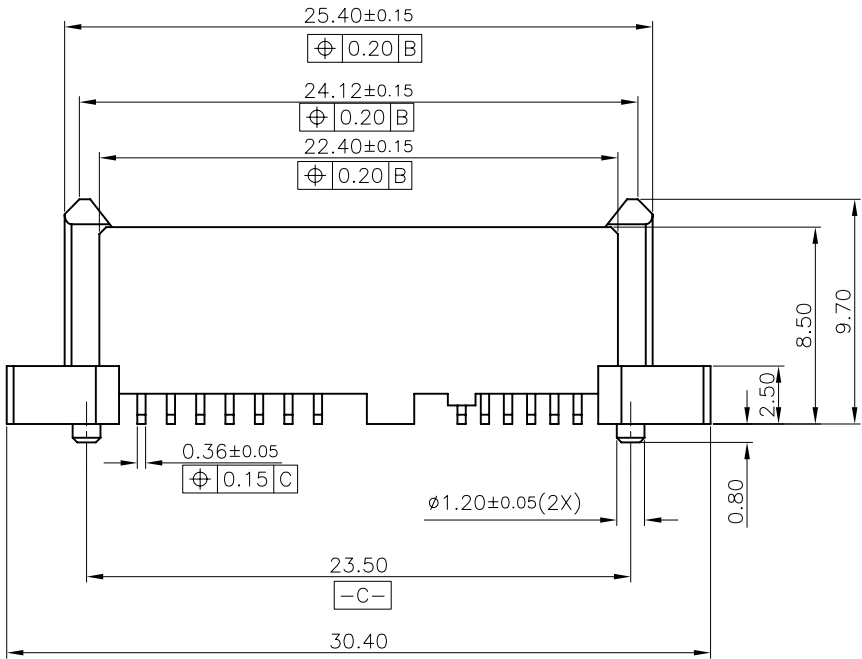
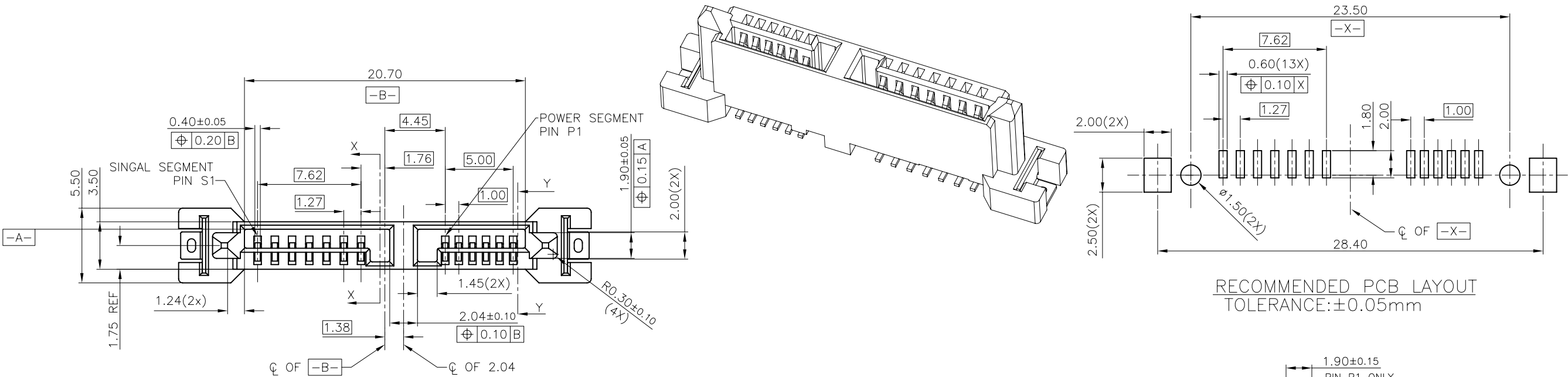


CUSTOMER DRAWING


REVISIONS				
SYM	ECN	DESCRIPTION	DATE	APPROVED
A		RELEASED TO CUSTOMER	4/15/06	IP



- NOTE:
- MATERIAL: HOUSING: HIGH TEMPERATURE THERMAL PLASTIC, UL94V-0 BLACK
TERMINAL: COPPER ALLOY, THICKNESS=0.25MM
SCREW NAL: STAINLESS, THICKNESS=0.35MM
 - PLATING: CONTACT AREA: SEE P/N SYSTEM
SOLDERTAIL: TIN PLATING
UNDERPLATE: NICKEL PLATING
 - PACKING: TRAY
 - MATERIAL SHOULD BE FULFILLED AMPHENOL SPEC, SSN2002
 - P/N SYSTEM:
SSATA-101-0102-1-X

1:0.76um Au PLATING ON CONTACT AREA;
2:0.38um Au PLATING ON CONTACT AREA;
3:GOLD FLASH ON CONTACT AREA.



UNLESS OTHERWISE SPECIFIED TOLERANCES			APPROVAL		DATE		Amphenol											
U.S.		METRIC	DRAWN	Maya.Lu	4/15/06													
0.0	+/-	0.30	CHECKED	IP	4/15/06													
0.00	+/-	0.15	CHECKED															
FRACTIONS +/-			DRAWING FILE : DRAWING\SATA\CSSATA10101021X.DWG				TITLE SLIMLINE SATA REC CONNECTOR											
ANGLES +/-											3"							
FOR MATERIALS AND FINISHES SEE NOTES			ANGLE OF PROJECTION				SIZE A3				DRAWING NO. C SSATA-101-0102-1-X				REV. A			
REMOVE SHARP EDGES																		
DIMENSIONS							SCALE				NONE				SHEET 1 OF 1			
U.S.		INCHES																
(METRIC)		(MM)																

Mouser Electronics

Authorized Distributor

Click to View Pricing, Inventory, Delivery & Lifecycle Information:

[Amphenol:](#)

[SSATA101010212](#)