

GENERAL PURPOSE LEVEL ULTRASONIC SENSOR



SSI Technologies, LLC
— an Amphenol Company —

The SSI Technologies GPLUS sensor is a compact, competitively priced solution for continuous fluid level monitoring. Constructed of PPS plastic, GPLUS is compatible with a wide range of chemicals and temperatures. Ultrasonic technology, combined with an on-board thermistor for temperature compensation provides a more accurate sensor than alternative low-cost level sensing technologies. GPLUS comes with a simple analog output, diagnostics, a programmed fluid averaging filter, and a simple twist-lock installation making it the perfect solution for your fluid level measurement needs.



FEATURES AND BENEFITS

- Continuous level output
- Compact, ultrasonic level sensor
- Standard Twist-lock mount with O-Ring
- Standard housing made of PPS, compatible with over 250 different chemicals
- Greater accuracy than other technologies
- Custom profiling available for your specific tank dimensions
- Level is compensated for changes in temperature using an on-board thermistor.
- Input voltage: 5V
- Output: 0.5V to 4.0V
- Cost effective

APPLICATIONS

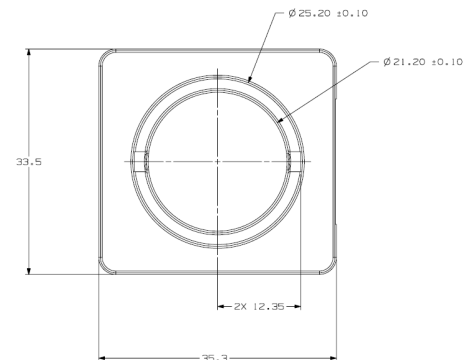
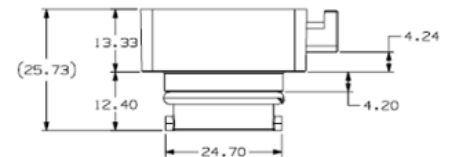
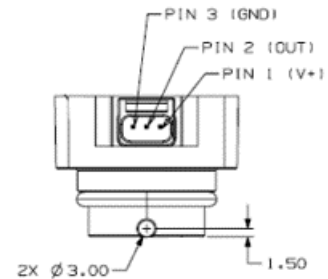
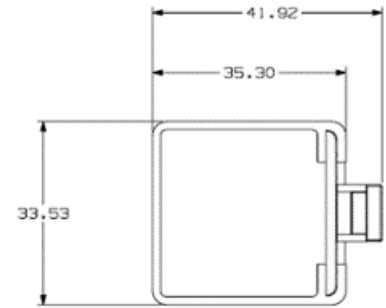
- Coolant level
- Fuel cells
- Chemical
- Water
- Pumps
- Small tank fluid handling
- Food and Beverage

GPLUS Performance Specifications & Dimensions

Specifications	
Part Number for Ordering	See PN Configurator
Classification	General Purpose
Fluid Compatibility	Liquids: water, coolant, transmission fluids, diesel, gas, fuel oils. Contact SSI for other fluid compatibility. .
Materials	
Housing	PPS
Connector	Polyamide 66, 35% GF
Adapter	Polyamide 66, 35% GF
O-Ring	Buna-N Contact SSI for other options.
Performance Characteristics	
Level Range	15mm - 221mm (0.59 in - 8.7 in) of fluid height
Level Resolution	<0.5mm
Level Accuracy	±2mm from 15mm to 100mm ±2% of scale from 100mm to 221mm
Dead Band (from surface of read face)	15mm
Beam Angle	+/- 6° typical
Level Response Time	TBD
Angle Performance	6° typical
Temperatures	
Storage	-35°C to 121° C
Operating	-35°C to 121° C **
Electrical Characteristics	
Supply Voltage	4.9 - 5.1 Vdc
Max. Average Operating Current	20mA
Max. Peak Operating Current	30mA
Max. In-rush Current	325mA
Output	0.5V to 4.0V
Environmental	
Ingress (connector)	IP67
Mechanical Interface	
Sensor	Quarter turn twist-lock*
Connector (Mating, recommended)	TE PN 2-2834074-3
Mounting Orientation	
Agency Approvals	RoHS, REACH

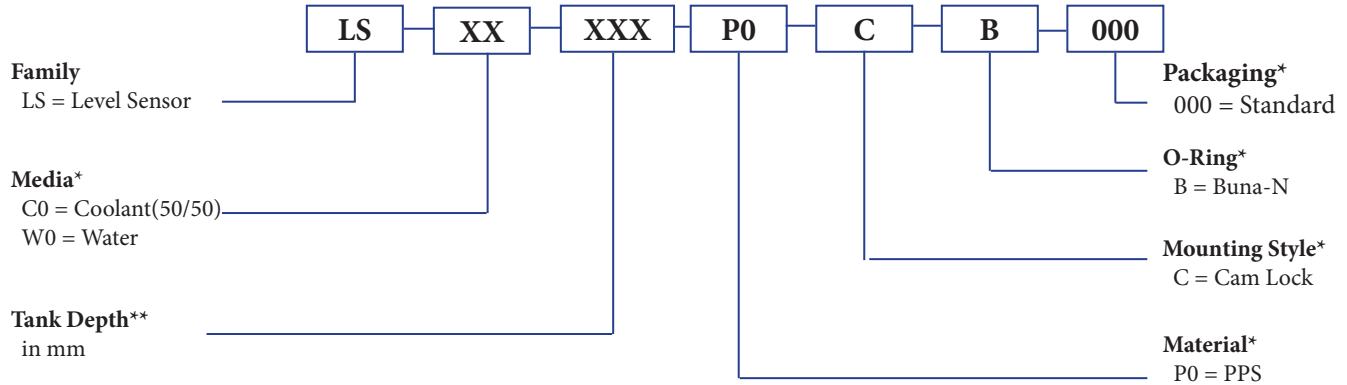
* Other options may be available. Contact SSI for technical assistance.

** Valid fluid measurement when fluid is in a fully liquid state



SPECIFICATIONS ARE SUBJECT TO CHANGE WITHOUT NOTICE.

GPLUS Part Number Configurator



* Other options may be available. Contact SSI for technical assistance.

** Physical maximum read distance varies based on media type. Contact SSI for assistance.

WARRANTY

LIMITED WARRANTY: All SSI products are warranted against defective materials and workmanship for a period of one (1) year from the date of delivery to the original purchaser. Any product that is found to be defective within the one year period will be replaced at the discretion of SSI. **THIS WARRANTY IS IN LIEU OF ALL OTHER WARRANTIES, EXPRESS OR IMPLIED, OF MERCHANTABILITY, FITNESS FOR PARTICULAR PURPOSE, PERFORMANCE, OR OTHERWISE.** SSI is not an expert in the customer's technical field and therefore does not warrant the suitability of its products for the applications selected by the customer. SSI accepts no responsibility for misuse, misapplication or unauthorized modification of its products.

LIMITATION OF LIABILITY: SSI's obligation under this limited warranty is strictly and exclusively limited to the repair or replacement free of charge of such articles as are found to be defective in material or workmanship on the conditions that the purchaser gives prompt written notice to SSI of any claim to breach of warranty within the warranty period, and, if requested, returns the defective articles to SSI. SSI will not assume any expenses or liability for repairs made to its articles outside of its plant, without its prior written consent. SSI reserves the right to satisfy its warranty obligation in full, with respect to defective articles, by the payment of the purchaser of all sums paid by the purchaser to SSI for such articles. **IN NO EVENT SHALL SSI BE LIABLE FOR CLAIMS (BASED UPON BREACH OF EXPRESS OR IMPLIED WARRANTY, NEGLIGENCE OR OTHERWISE) FOR ANY DAMAGES, WHETHER DIRECT, IMMEDIATE, INCIDENTAL, FORESEEABLE, CONSEQUENTIAL, OR SPECIAL.**

TERMS & CONDITIONS

Please visit www.ssi-sensors.com/contact/supplier-portal for information regarding the SSI Technologies, LLC Terms & Conditions of Sale.



SSI Technologies, LLC
— an Amphenol Company —

For more information, please visit www.ssi-sensors.com, or contact one of our sales specialists at:

www.ssi-sensors.com/contact/sales-and-support

SSI Technologies, LLC
3200 Palmer Drive
Janesville, WI 53546
Tel: 1-608-757-2000

Mouser Electronics

Authorized Distributor

Click to View Pricing, Inventory, Delivery & Lifecycle Information:

[Amphenol:](#)

[LS-CO-XXX-P0-C-B-000](#) [LS-W0-XXX-P0-C-B-000](#)