

4

3

2

DWG NO.  
GE-2093


SH  
1

REV  
B

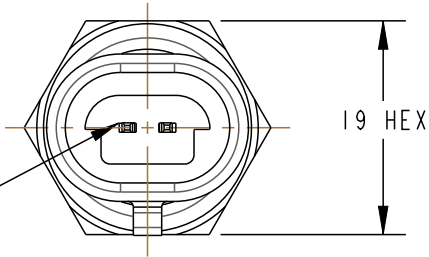
1

PROPRIETARY NOTICE: THE INFORMATION CONTAINED IN THIS DOCUMENT IS PROPRIETARY TO AMPHENOL AND SHALL NOT BE DISCLOSED IN WHOLE OR IN PART IN ANY FORM OR FOR ANY REASON EXCEPT AS EXPRESSLY STATED IN WRITING BY AMPHENOL.

NOTES:

1. CONTINUOUS OPERATING TEMPERATURE: -40° TO 150°C
2. CONNECTOR: METRI-PACK 150.2 OR GT150 3.5mm  MATING APTIV(DELPHI) PART NUMBER: 12162193, 15336004 OR EQUIVELENT
3. VOLTAGER : 5V

TERMINAL: TIN PLATED

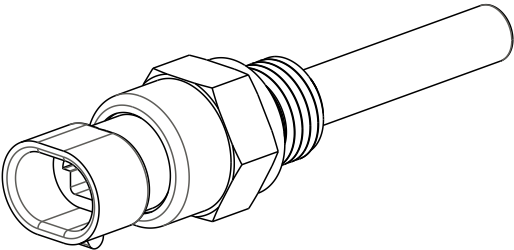
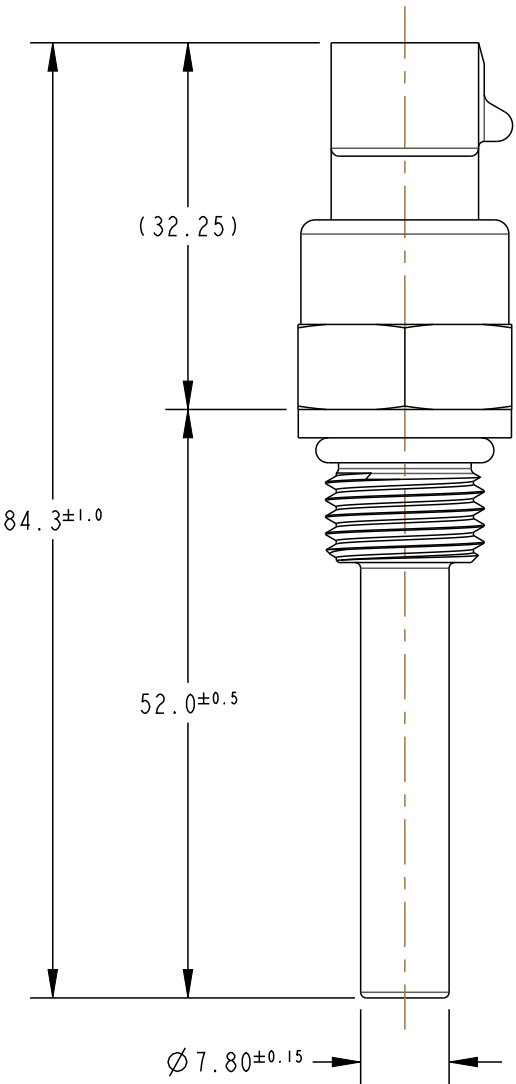


CONNECTOR: ULTEM 2310-BLACK

HOUSING: BRASS CDA 345

O-RING: 90 DURO NITRILE  
GROOVE PER ISO 6149-3

M14 x 1.5



SCALE 1:1

LEGAL NOTICE - THIS DRAWING AND ANY INTELLECTUAL PROPERTY RIGHTS THERE IN ARE PROPERTY OF AMPHENOL AND NO LICENSES ARE GRANTED UNDER THOSE RIGHTS.

4

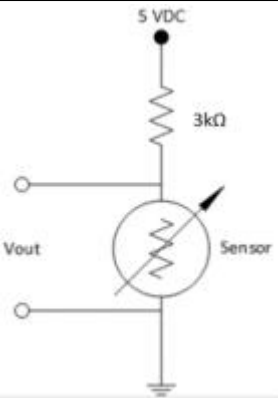
3

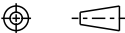
2

1

TEMP (°C)	RESISTANCE (OHMS)	RES TOL (+%)	RES TOL (-%)
-40°C	101770	5.74	9.27
25°C	2820	5.15	4.86
50°C	988.1	NOMINAL	
100°C	179.6	2.82	2.51
125°C	89.11	2.96	3.46

REVISIONS				
REV	REVISION HISTORY	DATE	DWN	APVD
A	INITIAL DRAFT	5/30/19	MED	STS
B	UPDATED RvT TABLE	02/07/19	JNJ	STS



Amphenol				
Advanced Sensors			St. Marys, PA 15857	
TITLE				
FLUID TEMPERATURE SENSOR				
UNLESS OTHERWISE SPECIFIED DIMENSIONS ARE IN MM TOLERANCES ARE:  .X ± 0.5                      ANGLES .XX ± 0.25                    ± 2°		APPROVALS		DATE
		DRAWN	MED	05/30/2019
		CHECKED	STS	05/30/2019
		ENGR	JJD	05/30/2019
DO NOT SCALE DRAWING				
THIRD ANGLE PROJECTION				
INTERPRET DRAWING IAW ASME Y14.5				
MATERIAL		SEE DRAWING		
SIZE		DWG NO.		REV
B		GE-2093		B
SCALE		SHEET 1 OF 1		
3:2				

# Mouser Electronics

Authorized Distributor

Click to View Pricing, Inventory, Delivery & Lifecycle Information:

[Amphenol:](#)

[GE-2093](#)