

4

3


2

1

DWG NO.	SH	REV
GE-1337	1	C

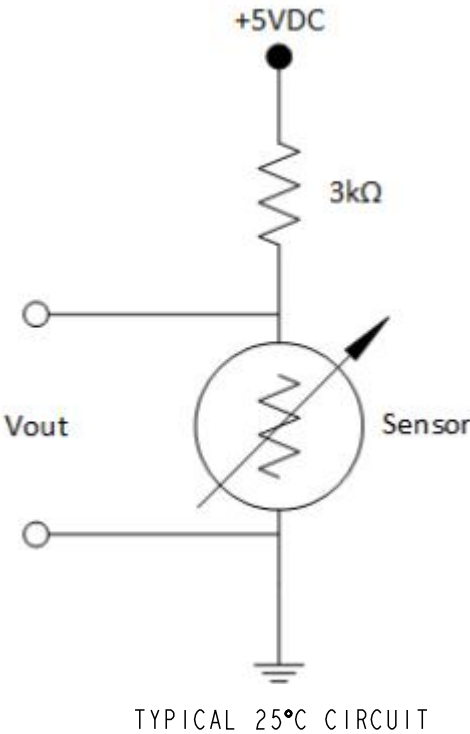
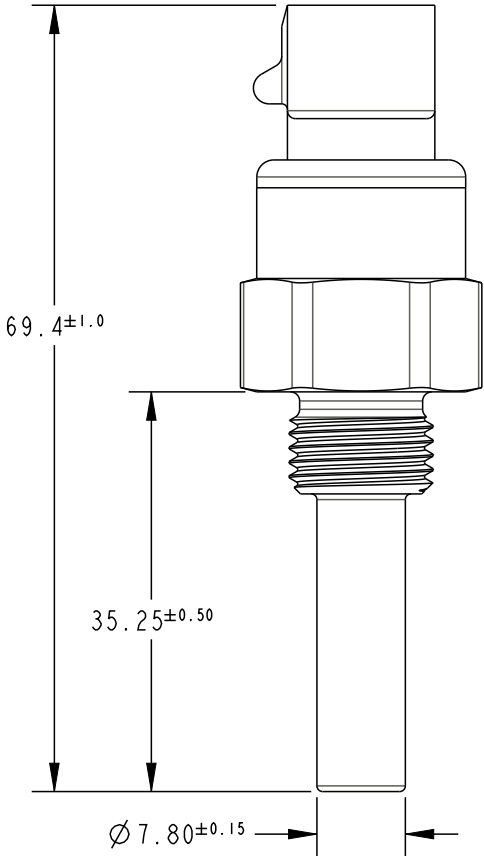
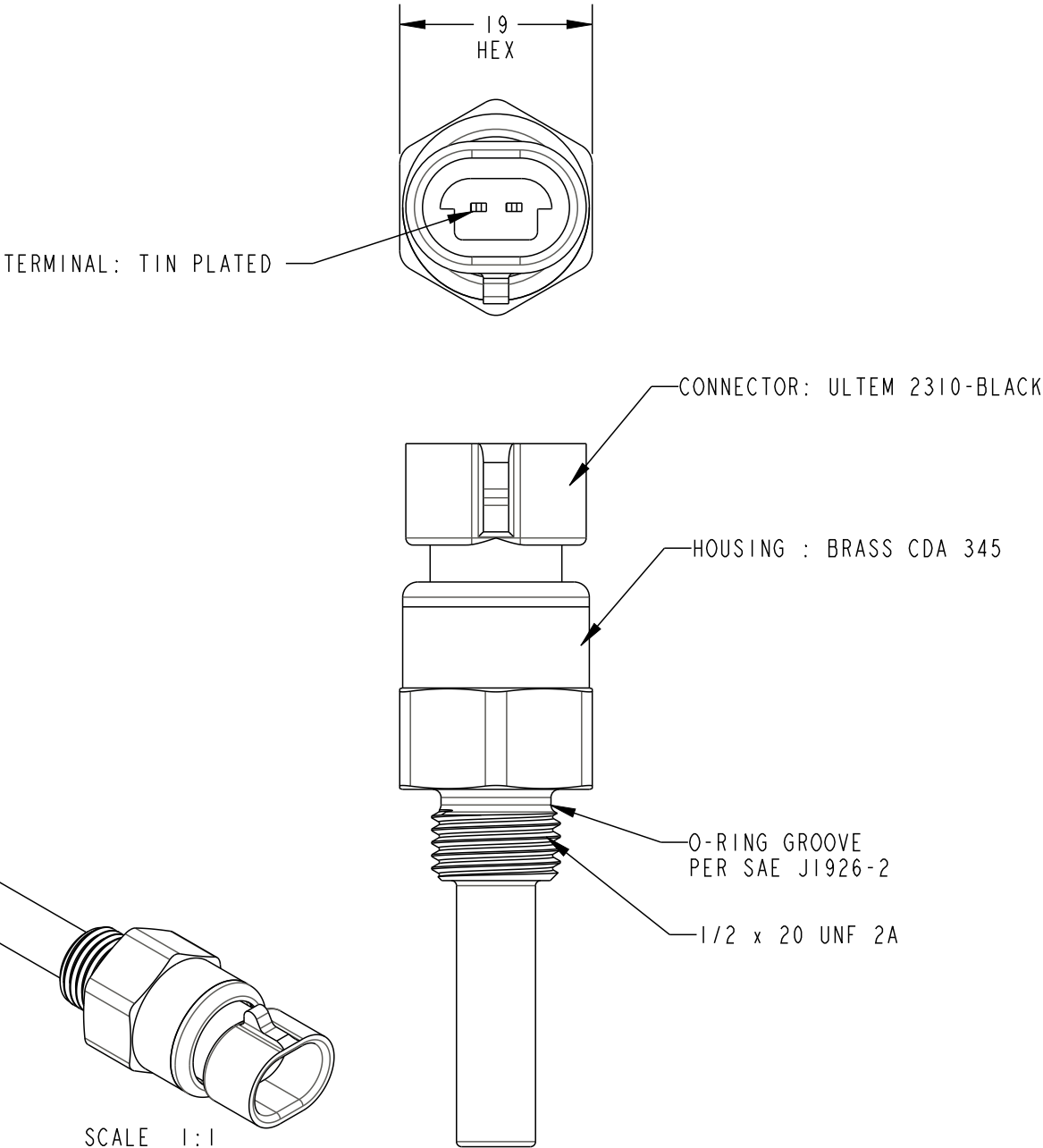
PROPRIETARY NOTICE: THE INFORMATION CONTAINED IN THIS DOCUMENT IS PROPRIETARY TO AMPHENOL AND SHALL NOT BE DISCLOSED IN WHOLE OR IN PART IN ANY FORM OR FOR ANY REASON EXCEPT AS EXPRESSLY STATED IN WRITING BY AMPHENOL.


NOTES:

1. CONTINUOUS OPERATING TEMPERATURE: -40° TO 125°C
2. CONNECTOR: METRI-PACK 150.2 or GT150 3.5mm   
MATING APTIV(DELPHI) PART NUMBER: 12162193,15336004, OR EQUIVILANT
3. VOLTAGE: 5V

TEMP (°C)	RESISTANCE (OHMS)	RES TOL (+%)	RES TOL (-%)
-40°C	101770	5.74	9.27
25°C	2820	5.15	4.86
50°C	988.1	NOM	
100°C	179.6	2.82	2.51
125°C	88.11	2.96	3.46

REVISIONS				
REV	REVISION HISTORY	DATE	DWN	APVD
A	INITIAL DRAFT	9/14/18	MED	JD
B	19.0 WAS 19.05, UPDATED TOL'S & RES-TABLE, REVISED NOTES, ADDED O-RING, TERMINAL & CIRCUIT NOTES	1/29/19	MED	STS
C	UP-DATED NOTES & RES TBL, 69.4+/-1 WAS 69.35+/-1.0, 35.3+/--.5 WAS 35.25+/--.50, ULTEM 2300-BLACK WAS ULTEM 2300	06/4/19	MED	STS





Advanced Sensors

St. Marys, PA 15857

TITLE

FLUID TEMPERATURE SENSOR

UNLESS OTHERWISE SPECIFIED  
DIMENSIONS ARE IN MM  
TOLERANCES ARE:  
.X ± 0.5  
.XX ± 0.25

APPROVALS  
DRAWN MED  
CHECKED JD  
ENGR MED  
QC  
MFG

DATE  
09/14/18  
09/14/18  
09/14/18

DO NOT SCALE DRAWING

THIRD ANGLE PROJECTION

INTERPRET DRAWING IAW ASME Y14.5

MATERIAL SEE DRAWING

SIZE  
B

SCALE  
3:2

DWG NO.  
GE-1337

REV  
C

SHEET 1 OF 1

LEGAL NOTICE - THIS DRAWING AND ANY INTELLECTUAL PROPERTY RIGHTS THERE IN ARE PROPERTY OF AMPHENOL AND NO LICENSES ARE GRANTED UNDER THOSE RIGHTS.

4

3

2

1

# Mouser Electronics

Authorized Distributor

Click to View Pricing, Inventory, Delivery & Lifecycle Information:

[Amphenol:](#)

[GE-1337](#)