

4


3

2

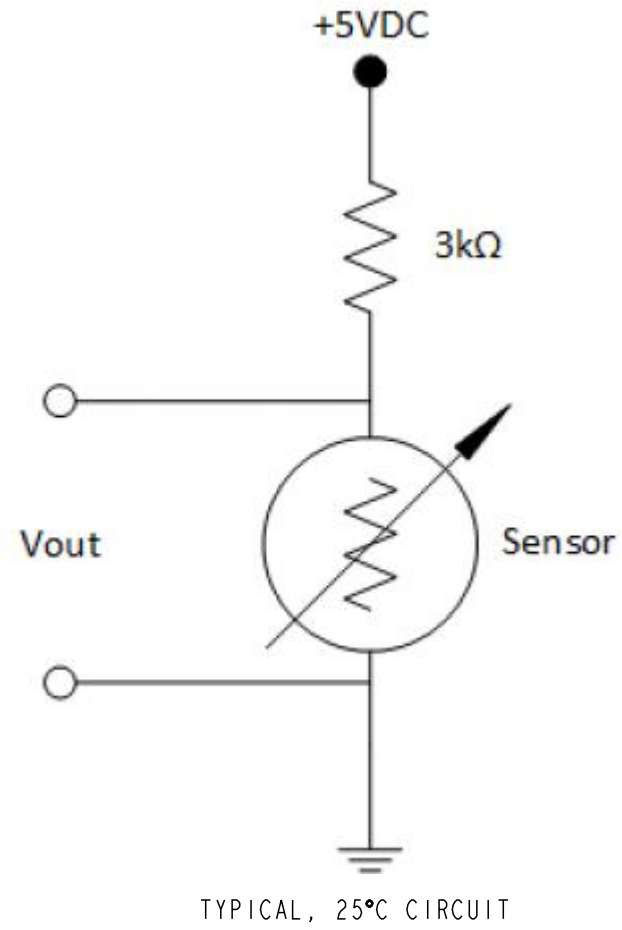
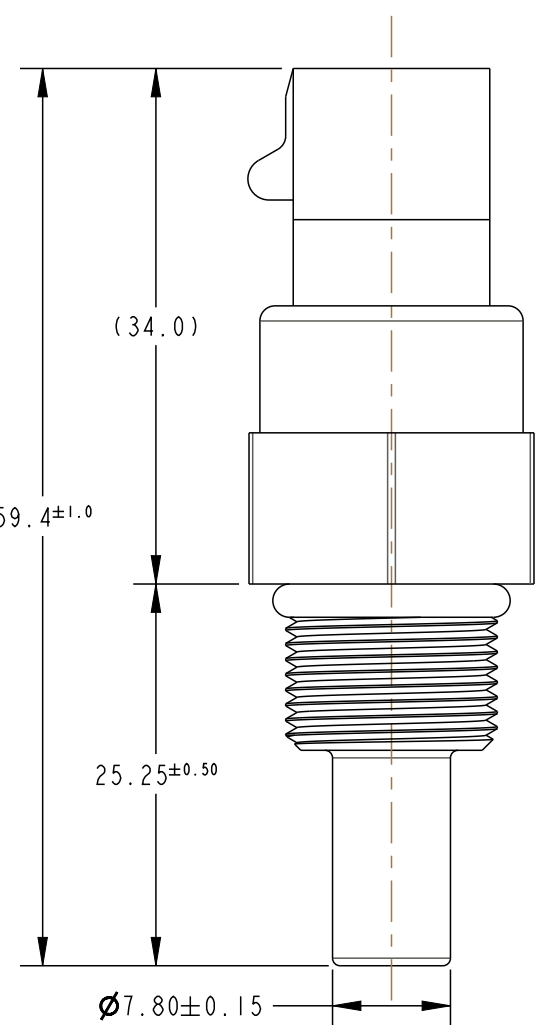
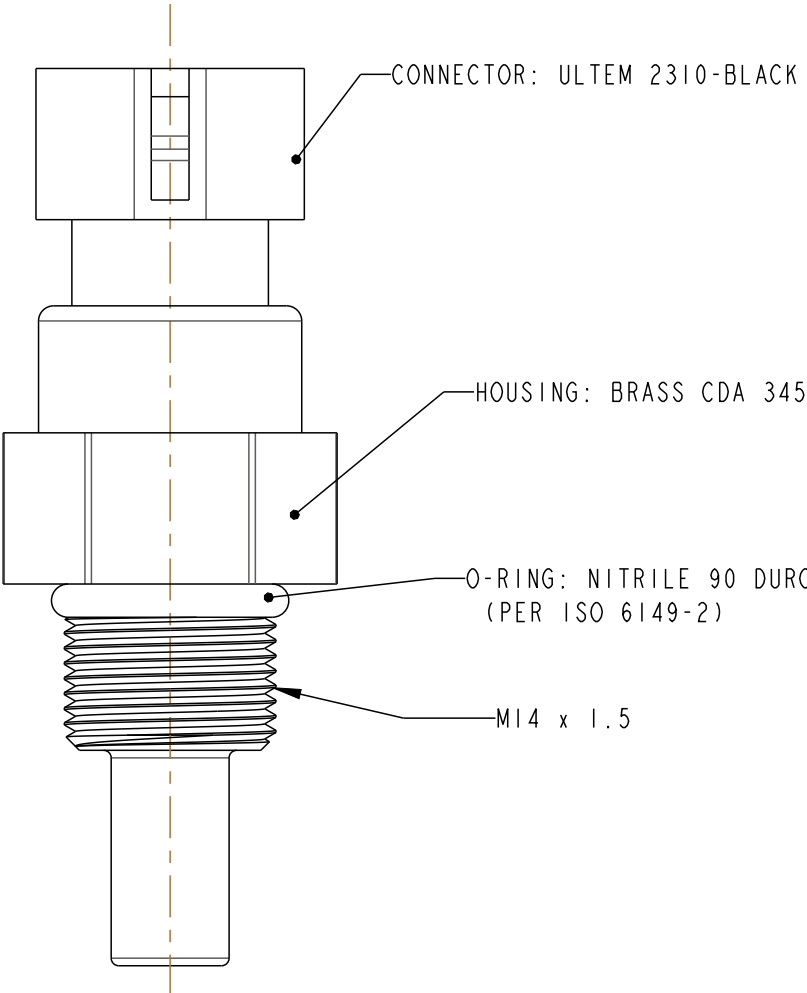
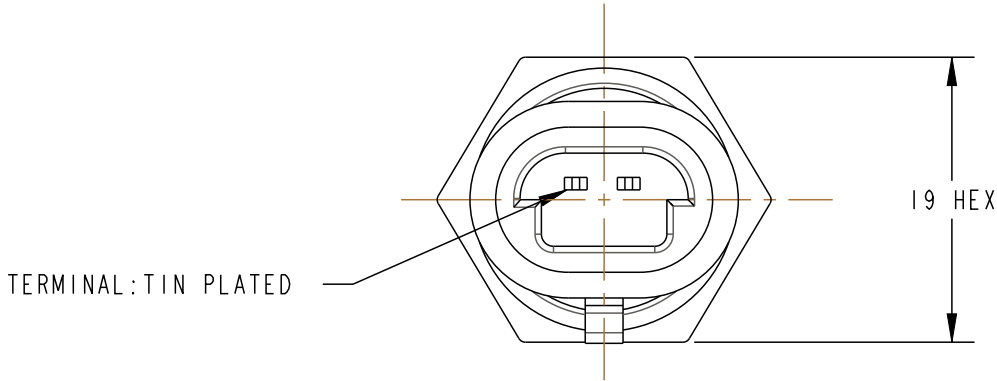
1

|         |    |     |
|---------|----|-----|
| DWG NO. | SH | REV |
| GE-1022 | 1  | C   |

PROPRIETARY NOTICE: THE INFORMATION CONTAINED IN THIS DOCUMENT IS PROPRIETARY TO AMPHENOL AND SHALL NOT BE DISCLOSED IN WHOLE OR IN PART IN ANY FORM OR FOR ANY REASON EXCEPT AS EXPRESSLY STATED IN WRITING BY AMPHENOL.

- NOTES:
- CONTINUOUS OPERATING TEMPERATURE -40 TO 150 DEGREES CELCIUS.
  - CONNECTOR: METRI-PACK 150.2 OR GT150 3.5mm   
MATING APTIV(DELPHI) PART NUMBER: 12162193,15336004 OR EQUIVILANT)
  - VOLTAGE: 5V

| TEMP<br>(°C) | RESISTANCE<br>(OHMS) | RES TOL<br>(+%) | RES TOL<br>(-%) | REVISIONS |  |          |     |      |
|--------------|----------------------|-----------------|-----------------|-----------|--|----------|-----|------|
|              |                      |                 |                 | REV       | REVISION HISTORY   | DATE     | DWN | APVD |
| -40          | 101770               | 5.74            | 9.27            | A         | INITIAL DRAFT  | 11/21/17 | DAM |      |
| 25           | 2820                 | 5.15            | 4.86            | B         | UPDATED TOL'S & RES-TABLE , REVISED NOTES & ULTEM ADDED TERMINAL O-RING & CIRCUIT NOTES                        | 1/29/19  | MED | STS  |
| 50           | 988.1                | NOMINAL         |                 | C         | UPDATED NOTES & RES TBL,ULTEM 2300-BLACK WAS ULTEM 2300, 59.4+/-1.0 WAS 59.35+/-1.0,25.3+/- .5 WAS 25.25+/- .5 | 5/31/19  | MED | STS  |
| 100          | 179.6                | 2.82            | 2.51            |           |  |          |     |      |
| 125          | 89.11                | 2.96            | 3.46            |           |  |          |     |      |



Amphenol

Advanced Sensors

St. Marys, PA 15857

TITLE

FLUID TEMPERATURE SENSOR

UNLESS OTHERWISE SPECIFIED  
DIMENSIONS ARE IN MM  
TOLERANCES ARE:  
.X ± 0.5  
.XX ± 0.25

APPROVALS  
DRAWN DAM  
CHECKED STS  
ENGR STS  
QC  
MFG

DATE  
11/21/2017  
11/21/2017  
11/21/2017

DO NOT SCALE DRAWING

THIRD ANGLE  
PROJECTION

INTERPRET DRAWING IAW ASME Y14.5

MATERIAL  
SEE DRAWING

SIZE  
B

SCALE  
2:1

DWG NO.  
GE-1022

REV  
C

SHEET 1 OF 1

SCALE 1:1

LEGAL NOTICE - THIS DRAWING AND ANY INTELLECTUAL PROPERTY RIGHTS THERE IN ARE PROPERTY OF AMPHENOL AND NO LICENSES ARE GRANTED UNDER THOSE RIGHTS.

# Mouser Electronics

Authorized Distributor

Click to View Pricing, Inventory, Delivery & Lifecycle Information:

[Amphenol:](#)

[GE-1022](#)