

Active In-car
Sensor

AIF003A005



Description

Amphenol Advanced Sensor's Active In-car Temperature Sensors use fast response, highly accurate NTC thermistors packaged to meet the stringent requirements of today's automotive applications.

Application

- For in cabin vehicle temperature measurement for vehicles that have an automated temperature control system

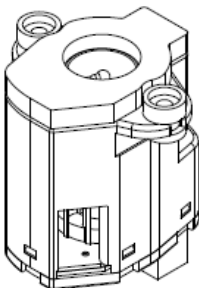
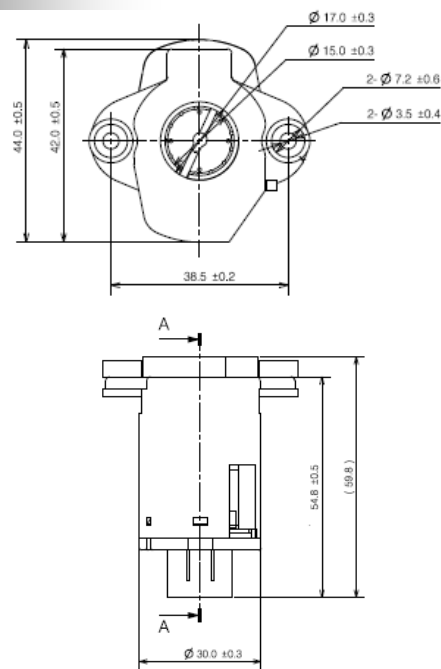
Features

- Alternate Thermistor RvT curves available
- Available with / without humidity sensor
- Different geometries to meet package requirements
- Alternate connector packages to meet needs

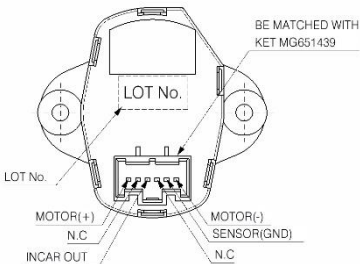
Specification

- Supply Voltage : DC 12.0V(9V~16V)
- Operating Temperature Range: -40°C to 85°C
- R@25°C: 30Kohm±1.2%
- B(0/50): 3887±1.0%
- Response Time(25/50): <10 seconds
- Low Noise: MAX 38dB(A)

Dimension



ISO VIEW



Thermistor RvT

TEMP(°C)	RESISTANCE(KOhm)
-30	528.2±4.35%
-15	218.2±3.43%
0	97.83±2.61%
15	47.12±1.45%
25	30.00±1.20%
35	19.60±1.44%
60	7.478±2.82%
80	3.225±3.69%

Mouser Electronics

Authorized Distributor

Click to View Pricing, Inventory, Delivery & Lifecycle Information:

[Amphenol:](#)

[AIF003A005](#)