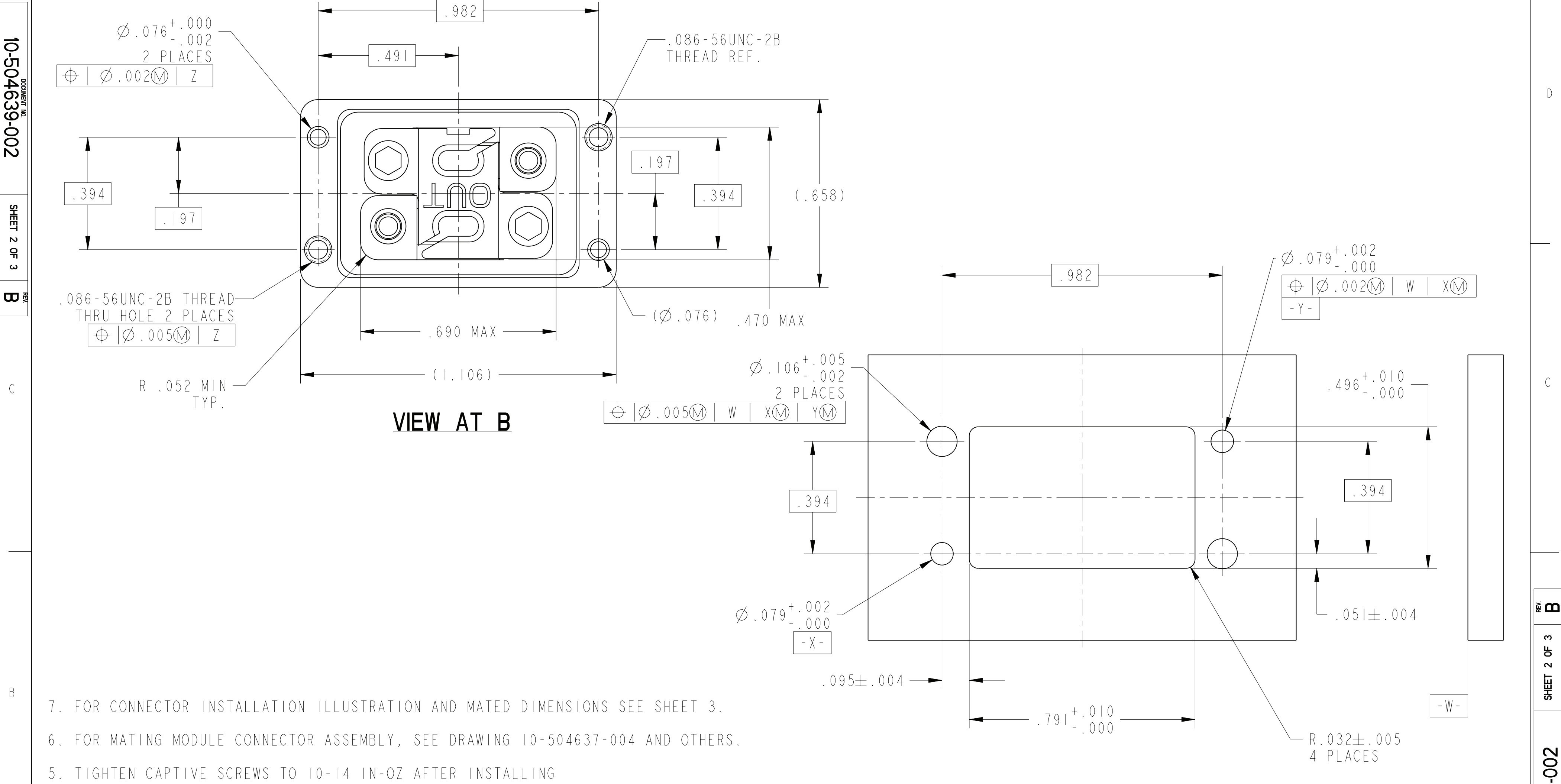


D

4

55

<h1>AMPHENOL CORPORATION</h1> <p>40-60 DELAWARE AVENUE SIDNEY, N.Y. 13838</p>			
<p>CONNECTOR, FIBER OPTIC, BACKPLANE, 2 MT</p>			
SIZE C	CASE CODE 77820	DOCUMENT NO. 10-504639-002	REV. B
SCALE: 3.0		REF: 10-504639-001	SHEET 1 OF 3



7. FOR CONNECTOR INSTALLATION ILLUSTRATION AND MATED DIMENSIONS SEE SHEET 3.

6. FOR MATING MODULE CONNECTOR ASSEMBLY, SEE DRAWING 10-504637-004 AND OTHERS.

5. TIGHTEN CAPTIVE SCREWS TO 10-14 IN-OZ AFTER INSTALLING MT FERRULE (NOT INCLUDED).

4. FIBER OPTIC INSERT IS DESIGNED FOR MT TYPE FERRULES TERMINATED TO NON-STRENGTH MEMBERED RIBBON CABLE.

3. INDICATED CAVITIES WILL ACCOMODATE A STANDARD 12 CHANNEL MT FERRULE PER IEC 1754-5-4.

2. BLACK INK STAMP "AMPHENOL" PART NUMBER AND DATE CODE ON INDICATED SURFACE PER 9-3856-5. DATE CODE PER 9-3895. CHARACTERS TO BE .062±.020 HIGH. ADDITIONAL INFORMATION MAY BE REQUESTED BY PURCHASE ORDER.

1. PARTS ARE SHIPPED UNASSEMBLED.

THE USE OF THIS DOCUMENT IS UNLIMITED. HOWEVER, DOCUMENTS REFERENCED HEREON MAY CONTAIN LIMITED RIGHTS DATA.

10-504639-002

DOCUMENT NO.

SHEET 2 OF 3

REV. B

IMAGED / Mar . 13 2012, 2:51:05 PM

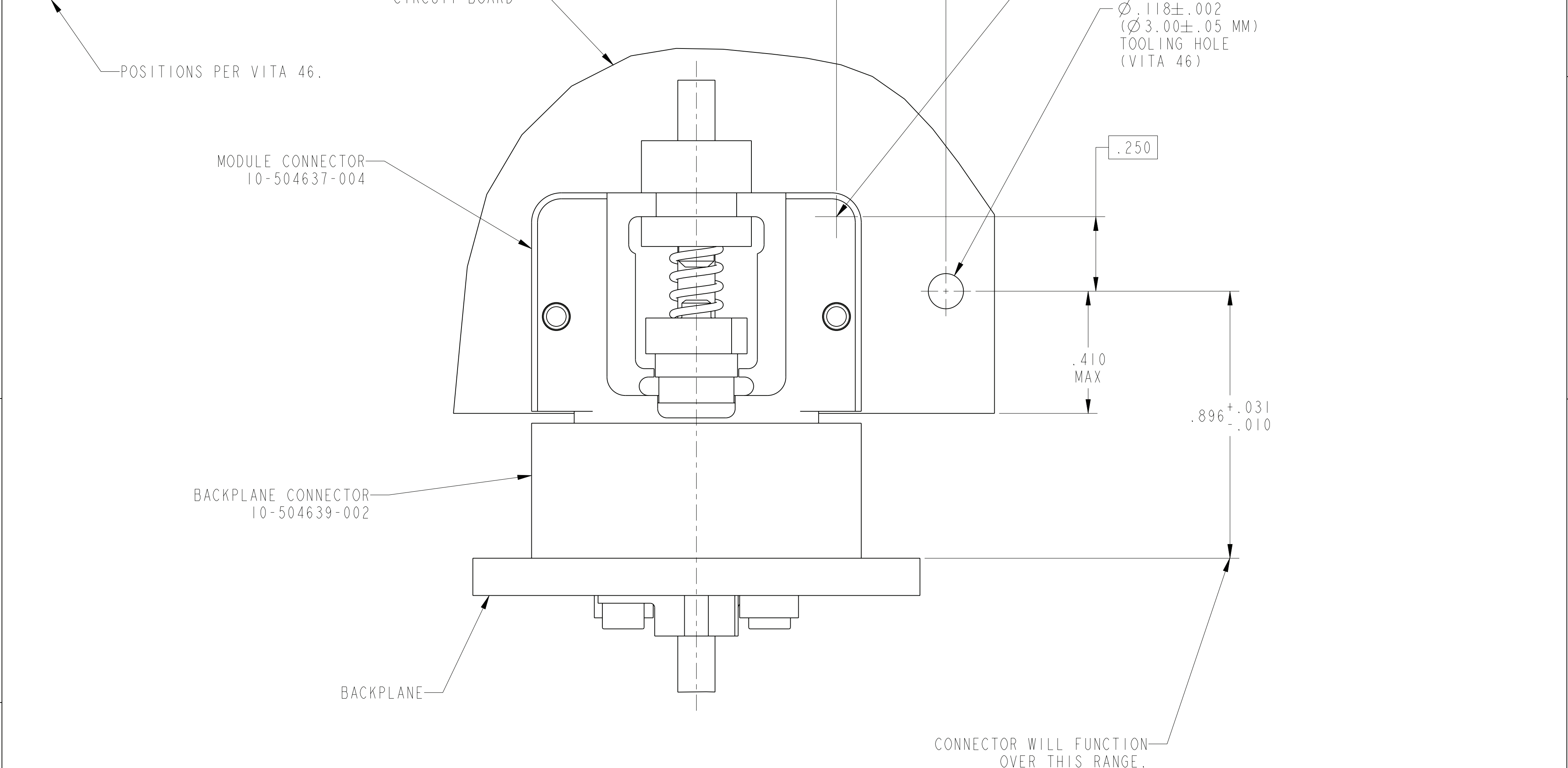
10-504639-002

DOCUMENT NO.

SHEET 2 OF 3

REV. B

CONNECTOR LOCATION ON MODULE PCB	
POSITION	DIM "X" MM (INCH)
P2	53.73 (2.1154)
P3	96.55 (3.8012)
P4	125.35 (4.9350)
P5	154.15 (6.0689)
P6	182.95 (7.2028)



THE USE OF THIS DOCUMENT IS UNLIMITED.
HOWEVER, DOCUMENTS REFERENCED HEREON
MAY CONTAIN LIMITED RIGHTS DATA.

**CONNECTOR INSTALLATION ILLUSTRATION
AND MATED DIMENSIONS**

SCALE 4.000

SIZE	CAGE CODE	DOCUMENT NO.	REV.
C	77820	10-504639-002	B
SCALE: 3.0		REF. 10-504639-001	SHEET 3 OF 3

Mouser Electronics

Authorized Distributor

Click to View Pricing, Inventory, Delivery & Lifecycle Information:

[Amphenol:](#)

[10-504639-002](#)