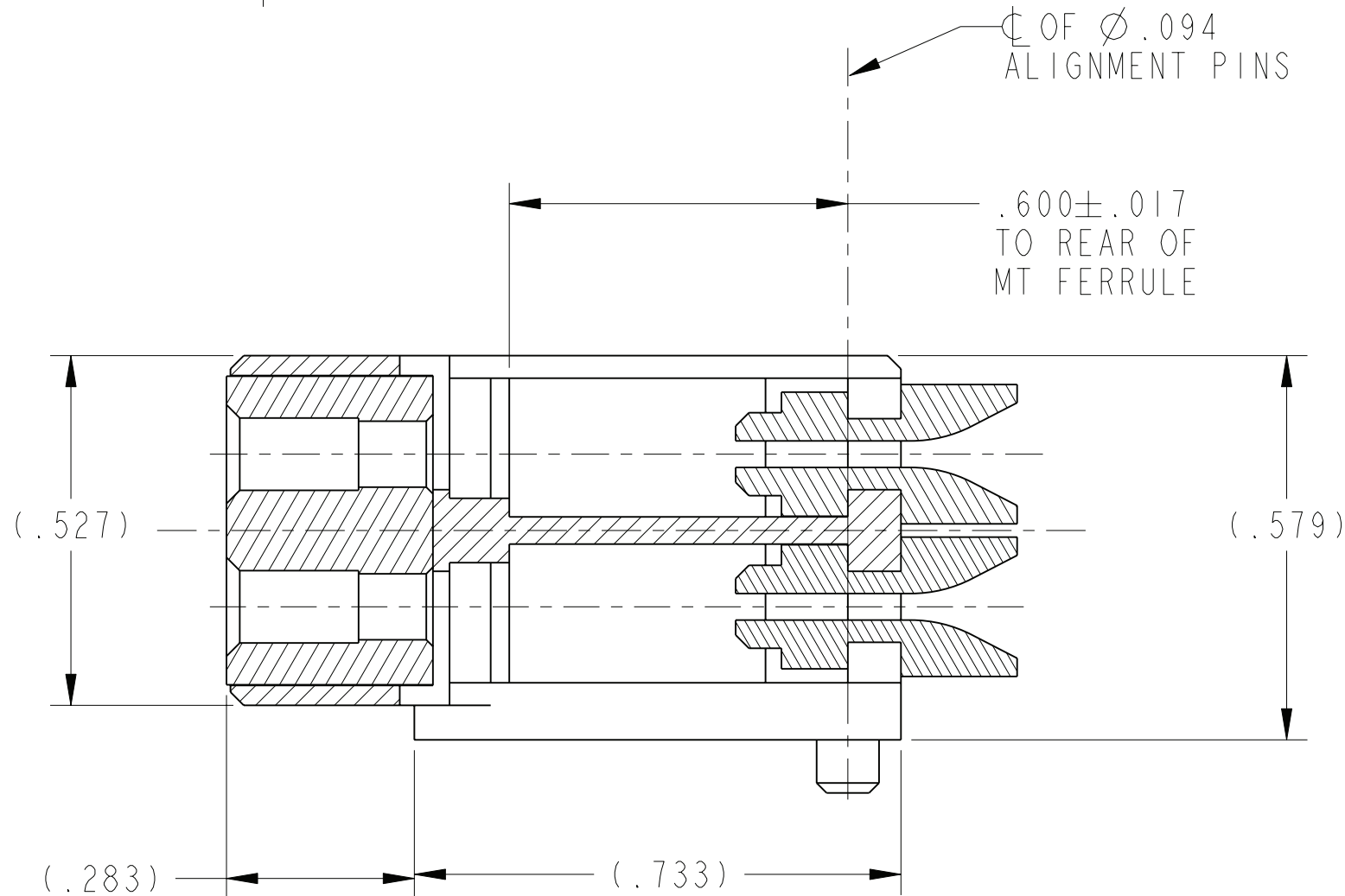
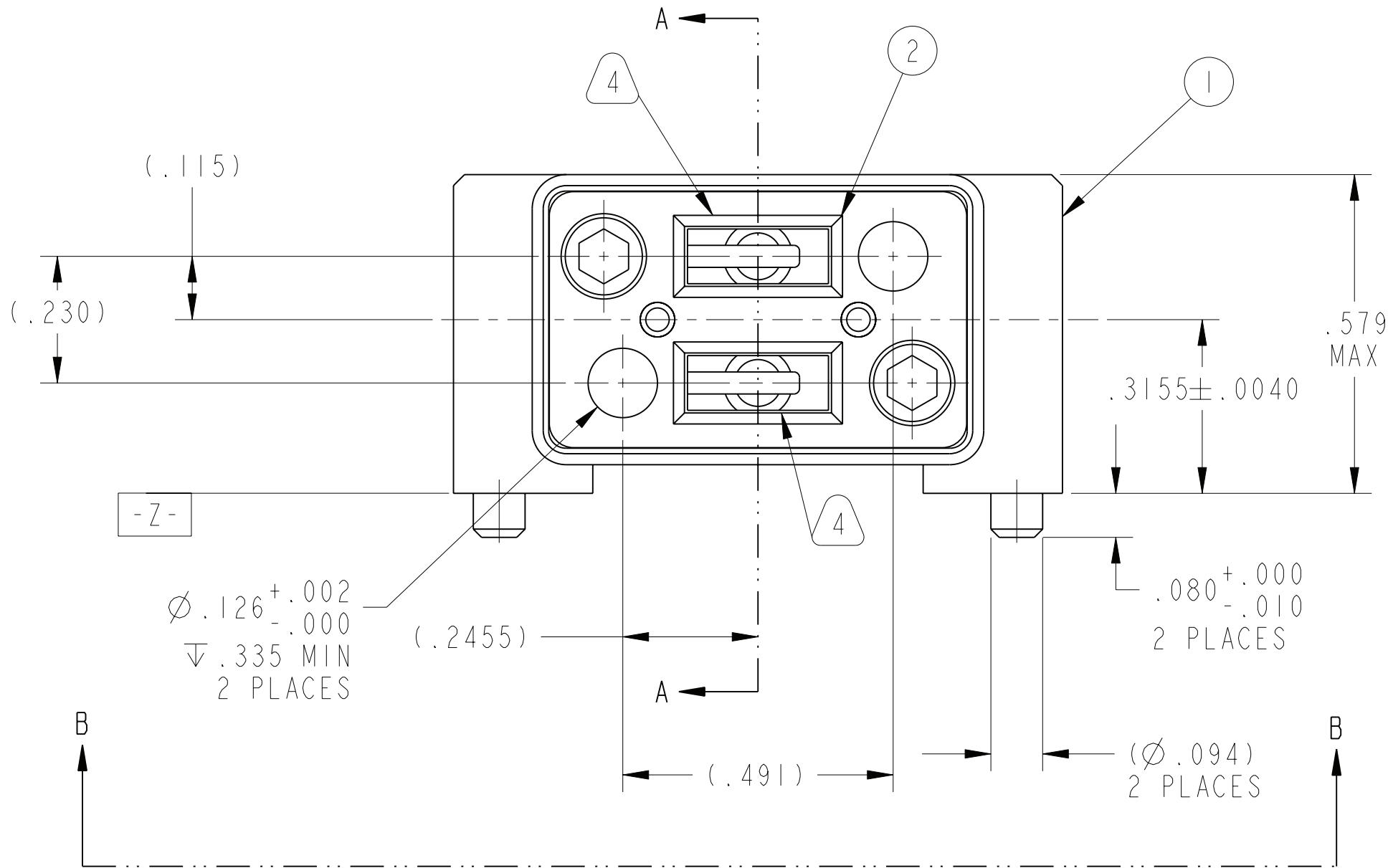
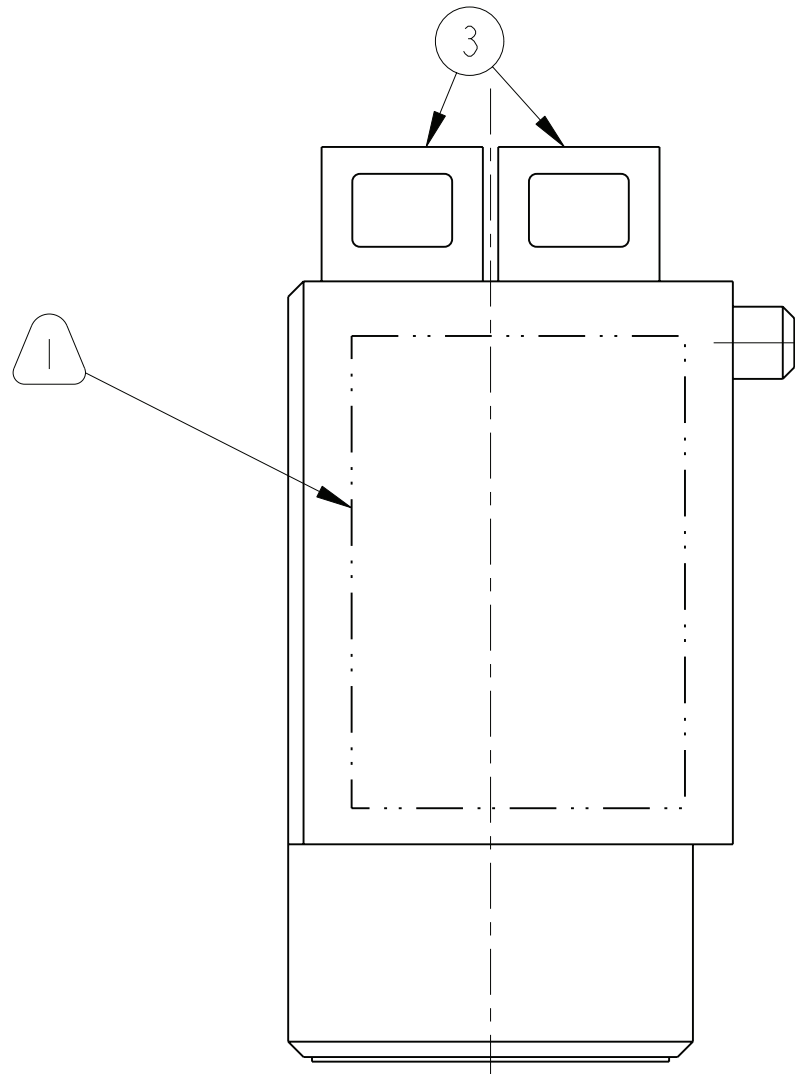
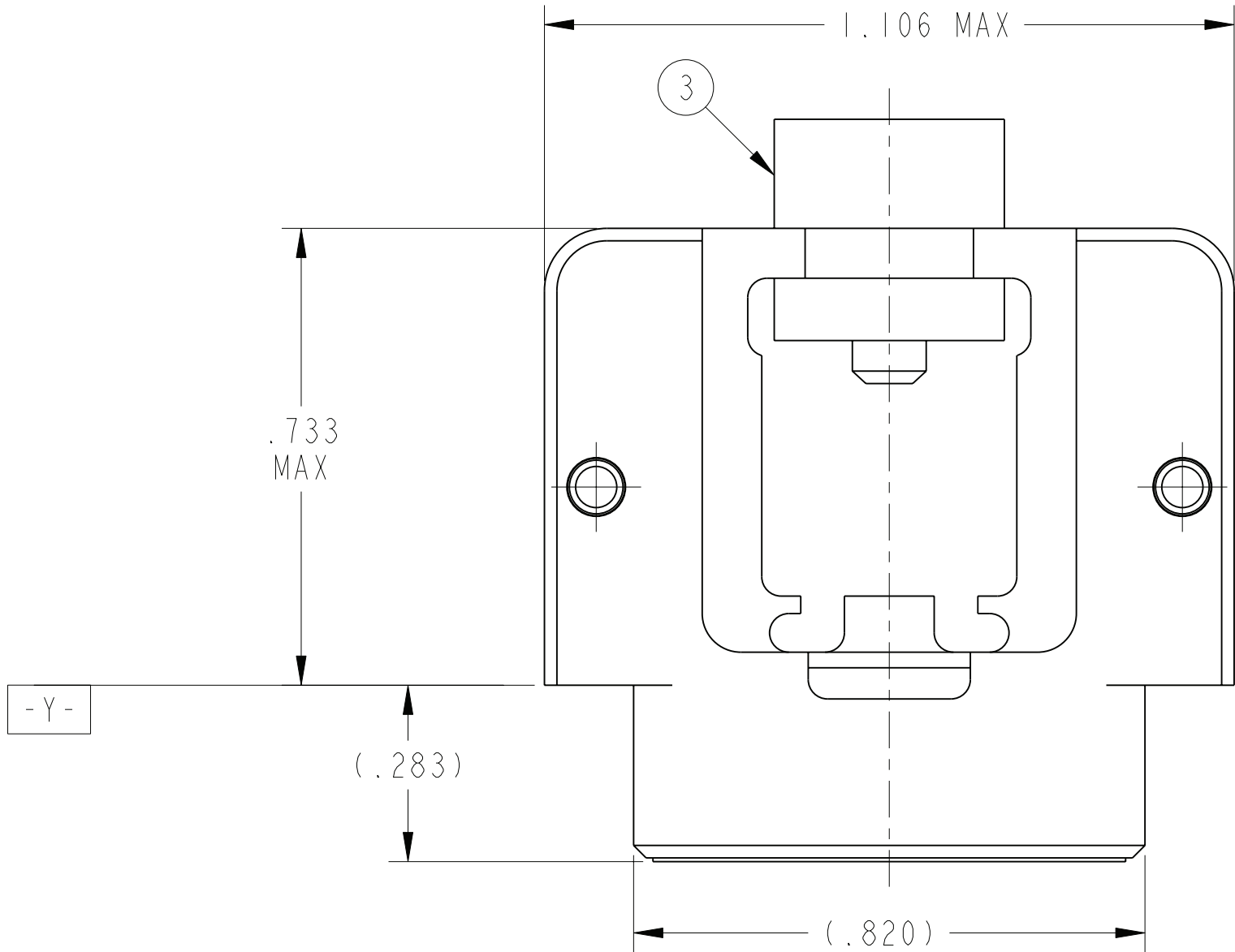
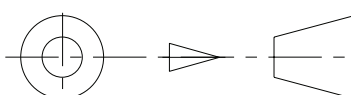


10-504637-004		DOCUMENT NO.	
SHEET 1 OF 4		REV. B	
REVISIONS			
LTR	DESCRIPTION	DATE	
A	PRODUCTION RELEASE	6/13/11	
B	CL(11) SEE CHANGE NOTICE ECN:B2374	1/23/12 RKC	



SECTION A-A

4	4	10-504808-007	MT PIN CLAMP ASSEMBLY	
3	2	10-504819-003	STRAIN RELIEF	
2	1	10-504819-007	MT FRONT INSERT ASSEMBLY	
1	1	10-504638-019	MAIN BODY	
POS	QTY	PART NUMBER	DESCRIPTION	NOTE
PARTS LIST				
APPROVALS		DATE	<div>AMPHENOL CORPORATION</div> <div>40-60 DELAWARE AVENUE SIDNEY, N.Y. 13838</div> <div>CONNECTOR, FIBER OPTIC, MODULE, 2 MT</div>	
PREPARED BY R. CHAPMAN		13-Jan-11		
ENGINEER IN CHARGE E. HICKEY				
DESIGN MANAGER E. HICKEY				
DESIGN ACTIVITY GROUP BLP				
THIRD ANGLE PROJECTION				
				
SIZE C	CAGE CODE 77820	DOCUMENT NO. 10-504637-004	REV. B	
SCALE: 2.0		REF: 10-504637-003	SHEET 1 OF 4	

PRO/ENGINEER INFORMATION	
N/A	Pro/e Model Used:
N/A	10-504637-004.ASSEM
Drawing Name:	
10-504637-004	
NEXT ASSEMBLY	

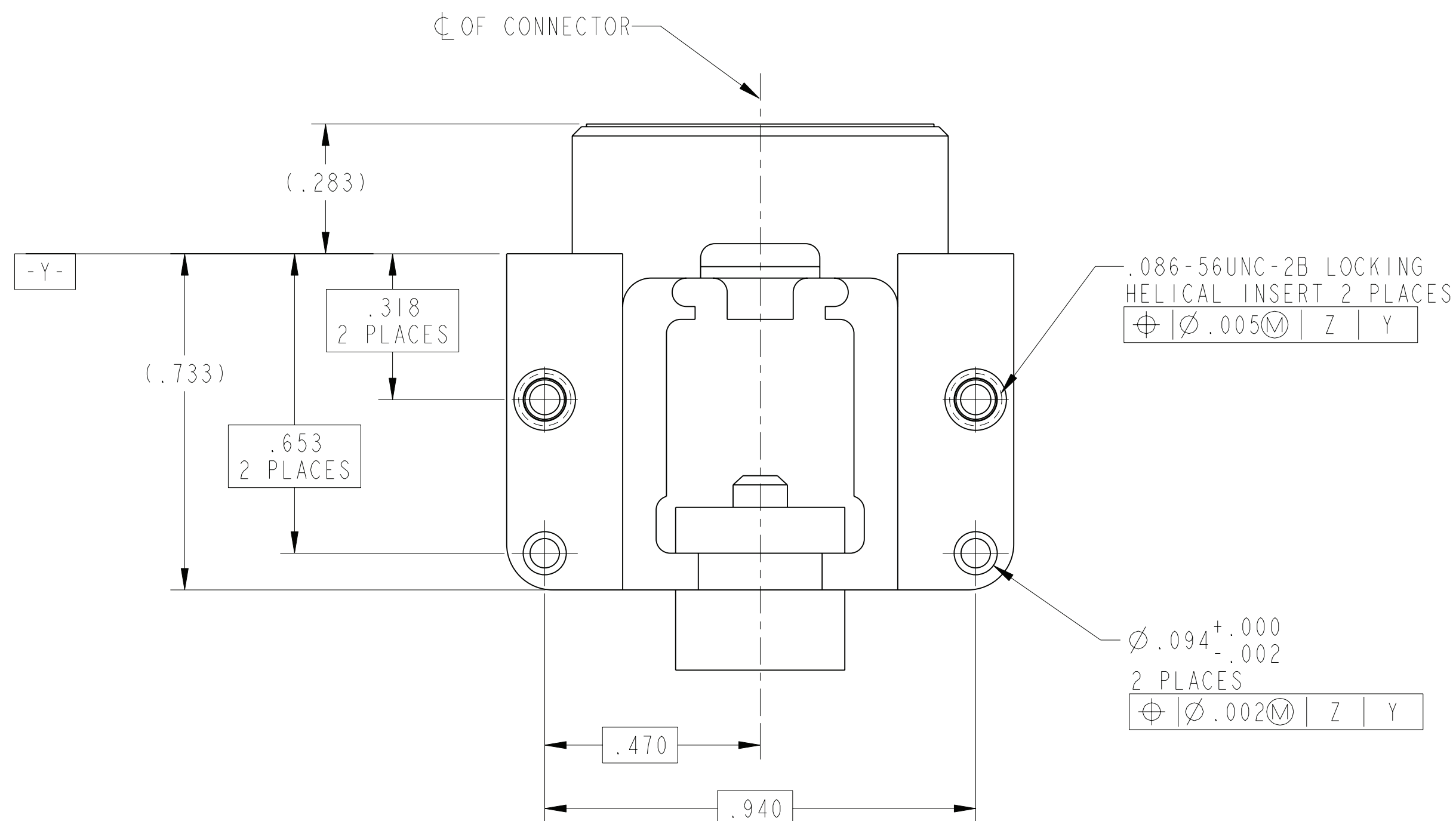
UNLESS OTHERWISE SPECIFIED
LINEAR DIMENSIONS ARE IN INCHES TOLERANCES: .XXXX = ±.0005 ANGLES= ±2° .XXX = ±.010 .XX = ±.03 .X = ±.1
DIM.& TOL. PER ASME Y14.5M; DRM PER MIL-DTL-31000; OTHER Amphenol Sds. PER 9-3800
LEGENDS: =FLAG NOTE CALL OUT REFERENCE ONLY

SPECIFICATIONS
MATERIAL SPEC. NA
PROCESS SPEC. 9-3856-5 9-3895

NOTES: SEE SHEET 2

THE USE OF THIS DOCUMENT IS UNLIMITED.
HOWEVER, DOCUMENTS REFERENCED HEREON
MAY CONTAIN LIMITED RIGHTS DATA.

DOCUMENT NO.	SHEET 1 OF 4	REV.
10-504637-004		B



VIEW AT B

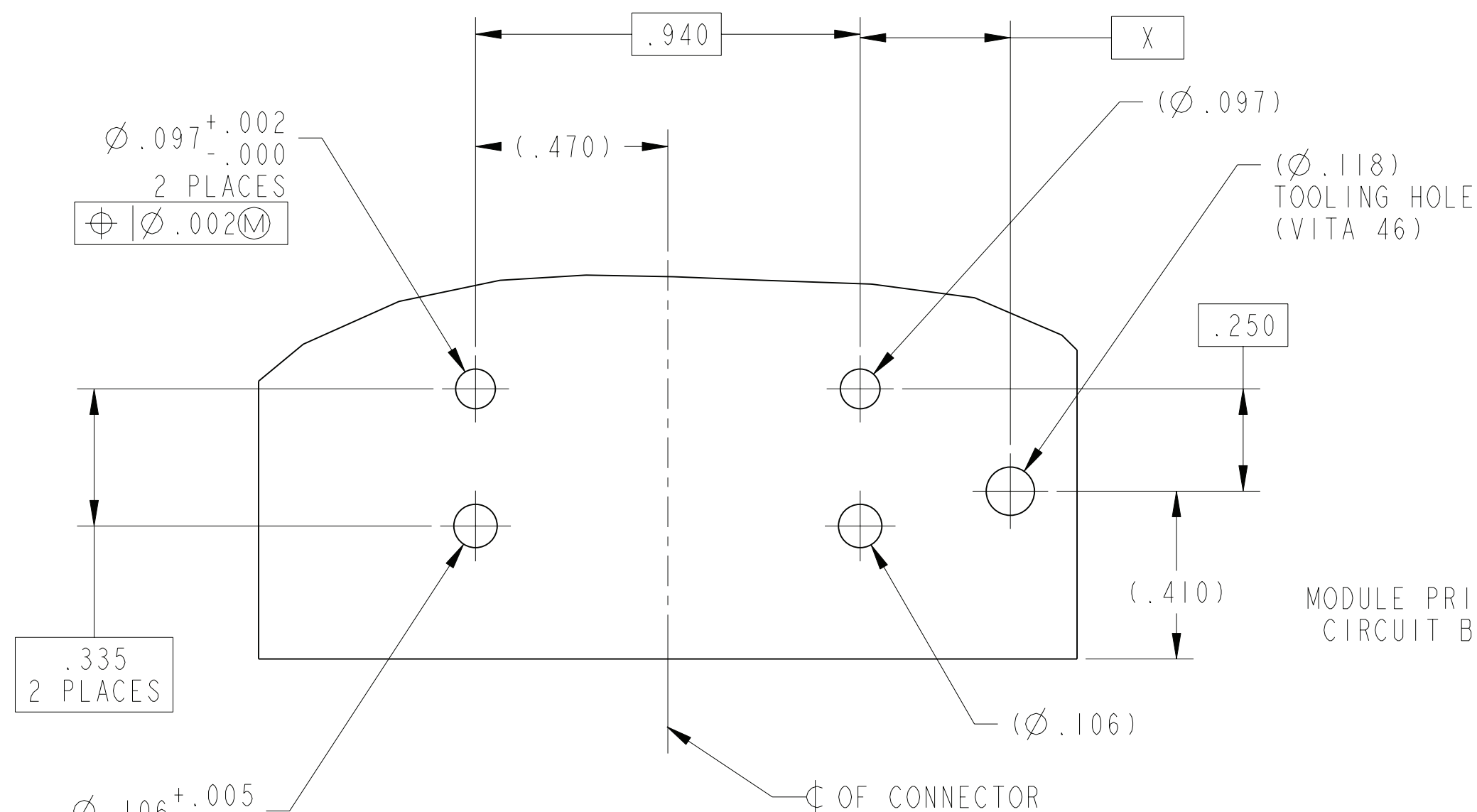
7. MT FERRULE (NOT INCLUDED) CAN NOT BE INSTALLED OR REMOVED UNLESS INSERT IS REMOVED FROM ASSEMBLY FIRST. REMOVE CONNECTOR FROM BOARD TO ACCESS MT FERRULE CLOSEST TO BOARD.
6. FRONT INSERT ASSEMBLY, STRAIN RELIEFS AND MT PIN CLAMP ASSEMBLIES ARE SHIPPED UNASSEMBLED.
5. FRONT INSERT (F/N 2) IS REMOVABLE ONCE CONNECTOR IS ATTACHED TO MODULE FOR CLEANING BY UNTHREADING CAPTIVE SCREWS. SCREWS SHOULD BE INSTALLED TO 10-14 IN-OZ.
4. INSERT CAVITIES ARE FOR FIBER OPTIC MT FERRULES PER IEC 1754-5-4. MT FERRULES AND ASSOCIATED RIBBON CABLE ARE NOT PART OF THIS ASSEMBLY. GUIDE PINS FOR MT FERRULES ARE INCLUDED (F/N 4) IN THE ASSEMBLY.
3. FOR CONNECTOR INSTALLATION ILLUSTRATION AND MATED DIMENSIONS SEE SHEET 3.
2. FOR MATING BACKPLANE CONNECTOR ASSEMBLY, SEE DRAWING 10-504639-002.
1. BLACK INK STAMP "AMPHENOL" PART NUMBER AND DATE CODE ON INDICATED SURFACE PER 9-3856-5. DATE CODE PER 9-3895. CHARACTERS TO BE .062±.020 HIGH. ADDITIONAL INFORMATION MAY BE REQUESTED BY PURCHASE ORDER. STAMPING CAN BE ON BOTH SIDES OF PART.

THE USE OF THIS DOCUMENT IS UNLIMITED.
HOWEVER, DOCUMENTS REFERENCED HEREON
MAY CONTAIN LIMITED RIGHTS DATA.

SIZE C	CAGE CODE 77820	DOCUMENT NO. 10-504637-004	REV. B
SCALE: 2.0		REF. 10-504637-003	SHEET 2 OF 4

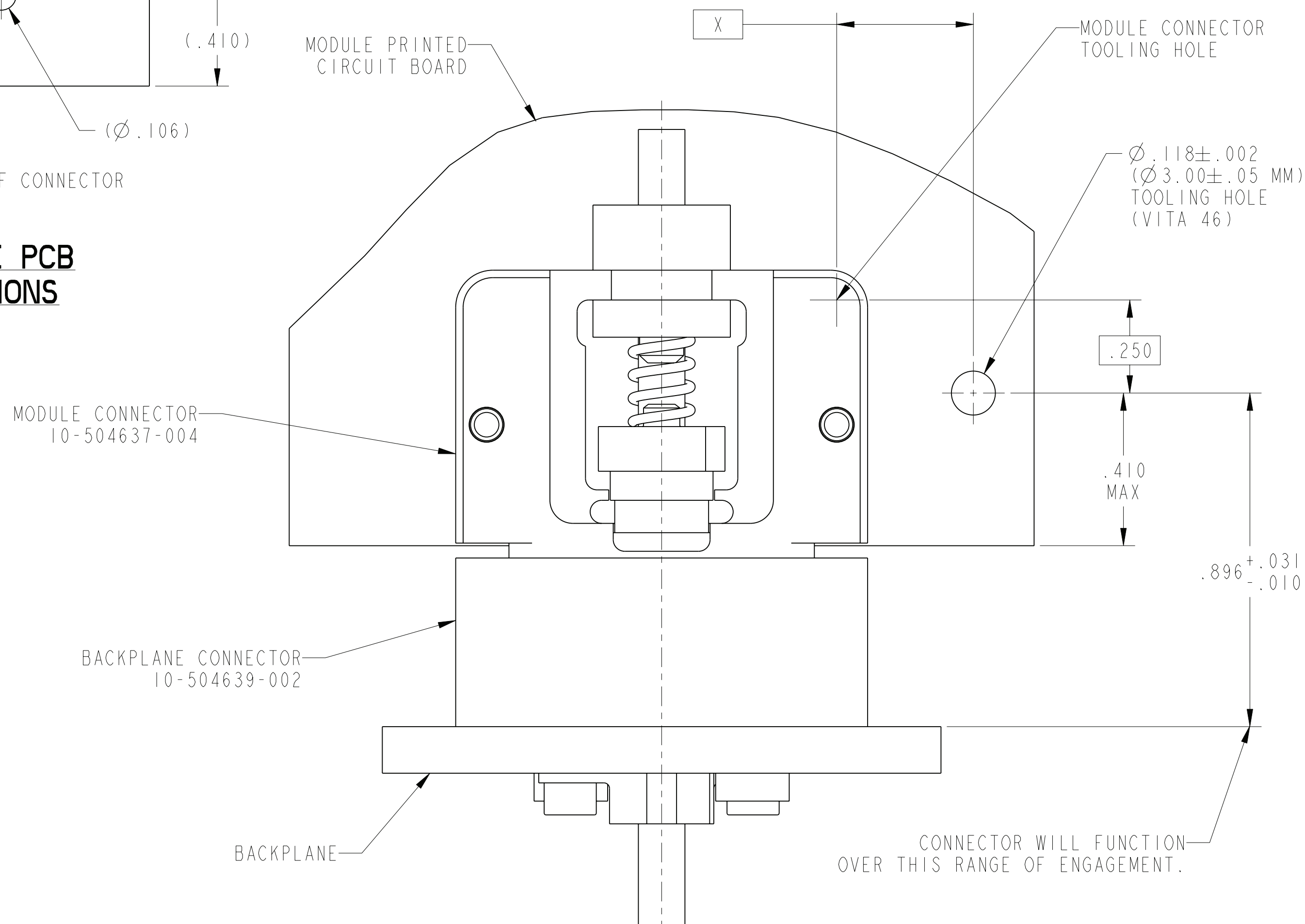
CONNECTOR LOCATION ON MODULE PCB	
POSITION	DIM "X" MM (INCH)
P2	53.73 (2.1154)
P3	96.55 (3.8012)
P4	125.35 (4.9350)
P5	154.15 (6.0689)
P6	182.95 (7.2028)

—POSITIONS PER VITA 46



SUGGESTED MODULE PCB INTERFACE DIMENSIONS

SCALE 3.000

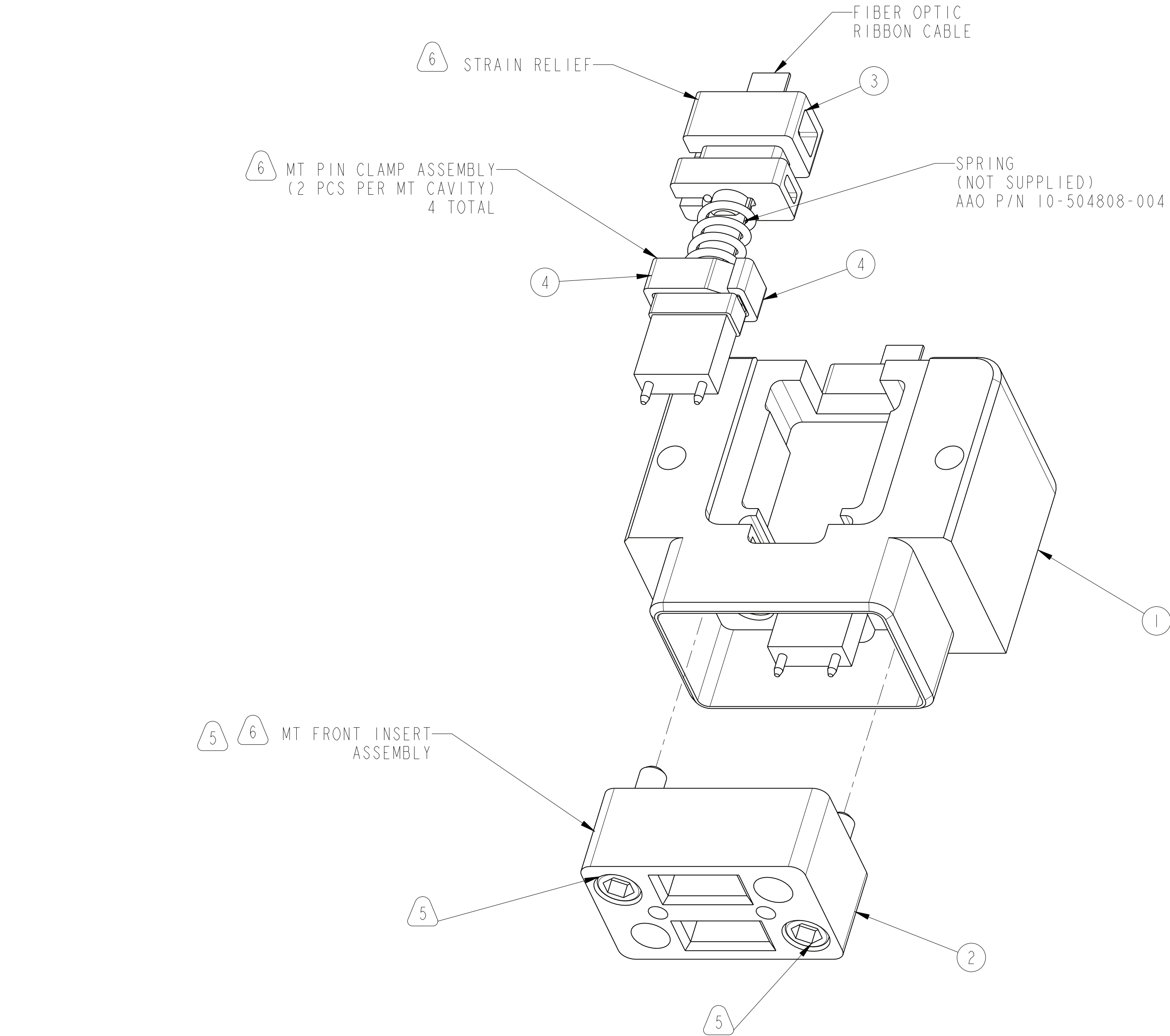


CONNECTOR INSTALLATION ILLUSTRATION AND MATED DIMENSIONS

SCALE 4.000

THE USE OF THIS DOCUMENT IS UNLIMITED.
HOWEVER, DOCUMENTS REFERENCED HEREON
MAY CONTAIN LIMITED RIGHTS DATA.

SIZE C	CAGE CODE 77820	DOCUMENT NO. 10-504637-004	REV. B
SCALE: 2.0		REF. 10-504637-003	SHEET 3 OF 4



EXPLODED VIEW OF
MT ASSEMBLY

SCALE 4.000

THE USE OF THIS DOCUMENT IS UNLIMITED.
HOWEVER, DOCUMENTS REFERENCED HEREON
MAY CONTAIN LIMITED RIGHTS DATA.

Mouser Electronics

Authorized Distributor

Click to View Pricing, Inventory, Delivery & Lifecycle Information:

[Amphenol:](#)

[10-504637-004](#)