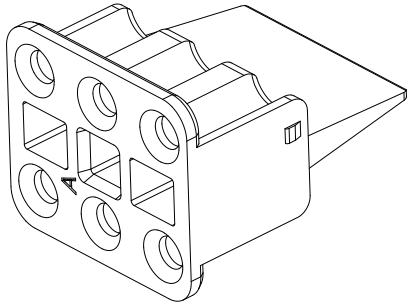
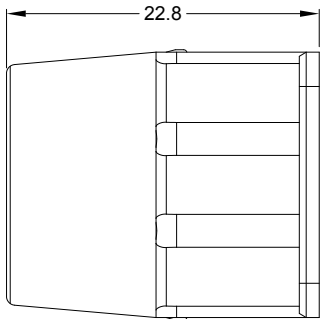
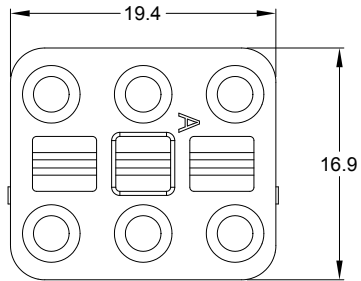
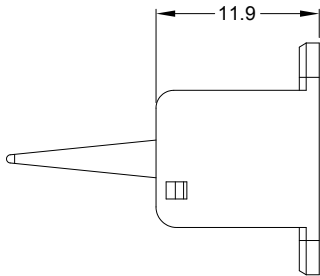



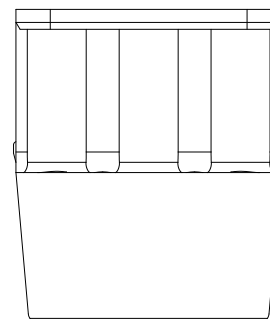
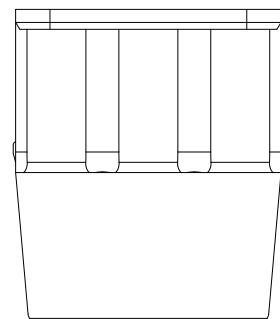
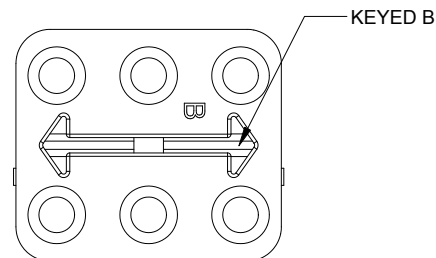
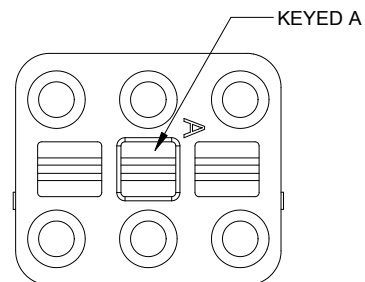
REVISIONS					
REV	ECO	DESCRIPTION	DATE	BY	APPR
A1	--	RELEASE NEW DRAWING	18/MAR/20	PETER	TOMMY



- NOTES: UNLESS OTHERWISE SPECIFIED
1. MATERIAL: THERMOPLASTIC; COLOR: SEE SHEET 2
 2. RoHS COMPLIANT
 3. CAVITIES: 6
 - 4 KEYED: SEE SHEET 2
 5. USE WITH CONNECTORS ATP06-6S*
(* = MODIFICATIONS AND COLORS)
 6. ALL DIMENSIONS ARE FOR REFERENCE USE ONLY.

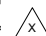
		AWP-6SX			
QUANTITY	PART NUMBER		DESCRIPTION		ITEM
MATERIALS LIST					
<div>UNLESS OTHERWISE SPECIFIED</div> <div>1) All dimensions are in metric(mm). 2) Tolerances are as follows: 1 PL DEC ±0.30 2 PL DEC ±0.15 3 PL DEC ±0.08</div> <div>Fractions ±1/64 Angles ±1°</div> <div>3) Note reference = </div>		<div>SIGNATURES</div> <div>DRAWN: PETER.YANG CHECKED: ORION.LI ENGINEER: APPROVAL: TOMMY.XIE CUSTOMER:</div> <div>DATE</div> <div>18/MAR/20 19/MAR/20 20/MAR/20</div>		<div>Amphenol</div> <div>Sine Systems - www.amphenol-sine.com 44724 Morley Drive Clinton Township, MI 48036</div>	
MATERIAL SPECIFICATIONS:		S-WEDGELOCK, 6 POSITION, ATP SERIES			
PROCESS SPECIFICATIONS:		<div>THIS DRAWING IS SUPPLIED FOR INFORMATION ONLY. DESIGN FEATURES, SPECIFICATIONS AND PERFORMANCE DATA SHOWN HEREON ARE THE PROPERTY OF THE AMPHENOL CORPORATION. NO RIGHTS OF REPRODUCTION ARE IMPLIED. ALL DIMENSIONS ARE SUBJECT TO NORMAL MANUFACTURING VARIATIONS.</div>			
NEXT ASSY:		<div>SIZE A</div> <div>TYPE C-</div> <div>SCALE: NONE</div>		<div>DWG NO: AWP-6SX</div> <div>REVISION A1</div> <div>SHEET 1 OF 2</div>	

REVISIONS					
REV	ECO	DESCRIPTION	DATE	BY	APPR
A1	--	RELEASE NEW DRAWING	18/MAR/20	PETER	TOMMY



AWP-6SA
GRAY

AWP-6SB
BLACK

	AWP-6SX				
QUANTITY	PART NUMBER		DESCRIPTION		ITEM
MATERIALS LIST					
UNLESS OTHERWISE SPECIFIED 1) All dimensions are in metric(mm). 2) Tolerances are as follows: 1 PL DEC ±0.30 2 PL DEC ±0.15 3 PL DEC ±0.08 3) Note reference = 		SIGNATURES DRAWN: PETER.YANG CHECKED: ORION.LI ENGINEER: APPROVAL: TOMMY.XIE CUSTOMER: THIS DRAWING IS SUPPLIED FOR INFORMATION ONLY. DESIGN FEATURES, SPECIFICATIONS AND PERFORMANCE DATA SHOWN HEREON ARE THE PROPERTY OF THE AMPHENOL CORPORATION. NO RIGHTS OF REPRODUCTION ARE IMPLIED. ALL DIMENSIONS ARE SUBJECT TO NORMAL MANUFACTURING VARIATIONS.		DATE 18/MAR/20 19/MAR/20 20/MAR/20	
MATERIAL SPECIFICATIONS:		<div>Amphenol</div> <div>Sine Systems - www.amphenol-sine.com 44724 Morley Drive Clinton Township, MI 48036</div>			
PROCESS SPECIFICATIONS:		S-WEDGELOCK, 6 POSITION, ATP SERIES			
NEXT ASSY:		SIZE A	TYPE C-	DWG NO: AWP-6SX	REVISION A1
		SCALE: NONE		SHEET 2 OF 2	

Mouser Electronics

Authorized Distributor

Click to View Pricing, Inventory, Delivery & Lifecycle Information:

[Amphenol:](#)

[AWP-6SA](#) [AWP-6SC](#) [AWP-6SD](#)