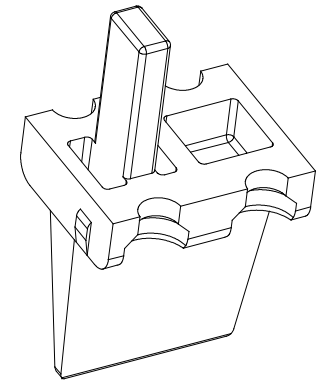
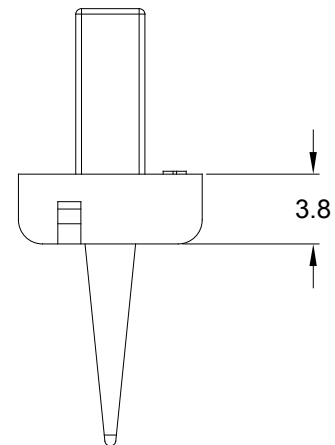
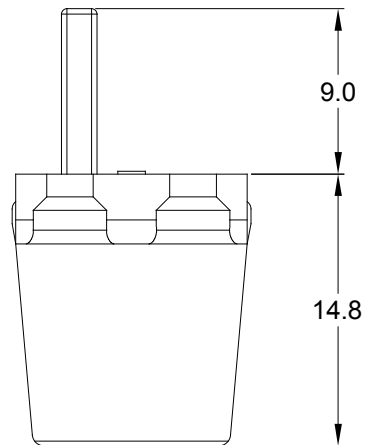
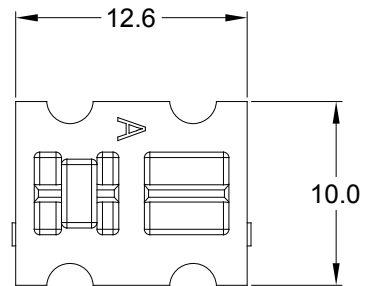


## REVISIONS

REV	ECO	DESCRIPTION	DATE	BY	APPR
A1	--	RELEASE DRAWING	05/DEC/19	SULLEN	TOMMY



## NOTES: UNLESS OTHERWISE SPECIFIED

1. MATERIAL: THERMOPLASTIC; COLOR: SEE SHEET 2

2. RoHS COMPLIANT

3. CAVITIES: 4

4. KEYED: SEE SHEET 2


5. USE WITH CONNECTORS ATP04-4P\*  
(\* = MODIFICATIONS AND COLORS)

6. ALL DIMENSIONS ARE FOR REFERENCE USE ONLY.

SEE SHEET 2

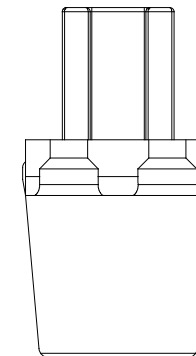
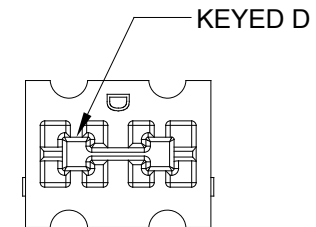
QUANTITY	PART NUMBER	DESCRIPTION	ITEM
----------	-------------	-------------	------

## MATERIALS LIST

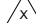

<b>UNLESS OTHERWISE SPECIFIED</b> 1) All dimensions are in metric(mm). 2) Tolerances are as follows: 1 PL DEC $\pm 0.30$ 2 PL DEC $\pm 0.15$ 3 PL DEC $\pm 0.08$ 3) Note reference = 		<b>SIGNATURES</b> DRAWN: SULLEN.ZHANG CHECKED: ORION.LI ENGINEER: APPROVAL: TOMMY.XIE	<b>DATE</b> 05/DEC/19 05/DEC/19  05/DEC/19	<b>Amphenol</b> Sine Systems - www.amphenol-sine.com 44724 Morley Drive Clinton Township, MI 48036	
<b>MATERIAL SPECIFICATIONS:</b>		<b>CUSTOMER:</b>		<b>P-WEDGELOCK,4 POS,ATP SERIES</b>	
<b>PROCESS SPECIFICATIONS:</b>		<b>THIS DRAWING IS SUPPLIED FOR INFORMATION ONLY. DESIGN FEATURES, SPECIFICATIONS AND PERFORMANCE DATA SHOWN HEREON ARE THE PROPERTY OF THE AMPHENOL CORPORATION. NO RIGHTS OF REPRODUCTION ARE IMPLIED. ALL DIMENSIONS ARE SUBJECT TO NORMAL MANUFACTURING VARIATIONS.</b>		<b>SIZE</b> A	<b>TYPE</b> C-
<b>NEXT ASSY:</b>		<b>DWG NO:</b> AWP-4PX		<b>REVISION</b> A1	
		<b>SCALE:</b> NONE		<b>SHEET</b> 1	<b>OF</b> 2

## APPR

TOMMY



AWP-4PD  
BROWN

		AWP-4PX			
QUANTITY	PART NUMBER		DESCRIPTION		ITEM
MATERIALS LIST					
<div>UNLESS OTHERWISE SPECIFIED</div> <div>1) All dimensions are in metric(mm).</div> <div>2) Tolerances are as follows:</div> <div>1 PL DEC ±0.30    Fractions ±1/64</div> <div>2 PL DEC ±0.15    Angles ±1°</div> <div>3 PL DEC ±0.08</div> <div>3) Note reference = </div>		<div>SIGNATURES</div> <div>DATE</div> <div>DRAWN: SULLEN.ZHANG 05/DEC/19</div> <div>CHECKED: ORION.LI 05/DEC/19</div> <div>ENGINEER:</div> <div>APPROVAL: TOMMY.XIE 05/DEC/19</div> <div>CUSTOMER:</div> <div>THIS DRAWING IS SUPPLIED FOR INFORMATION ONLY. DESIGN FEATURES, SPECIFICATIONS AND PERFORMANCE DATA SHOWN HEREON ARE THE PROPERTY OF THE AMPHENOL CORPORATION. NO RIGHTS OF REPRODUCTION ARE IMPLIED. ALL DIMENSIONS ARE SUBJECT TO NORMAL MANUFACTURING VARIATIONS.</div>		<div></div> <div>Sine Systems - <a href="http://www.amphenol-sine.com">www.amphenol-sine.com</a></div> <div>44724 Morley Drive</div> <div>Clinton Township, MI 48036</div> <div>P-WEDGELOCK,4 POS,ATP SERIES</div> <div><div><div>SIZE</div><div>A</div></div><div><div>TYPE</div><div>C-</div></div><div><div>DWG NO:</div><div>AWP-4PX</div></div><div><div>REVISION</div><div>A1</div></div></div> <div><div>SCALE:</div><div>NONE</div></div> <div><div>SHEET</div><div>2</div><div>OF</div><div>2</div></div>	
NEXT ASSY:					

# Mouser Electronics

Authorized Distributor

Click to View Pricing, Inventory, Delivery & Lifecycle Information:

[Amphenol:](#)

[AWP-4PD](#)