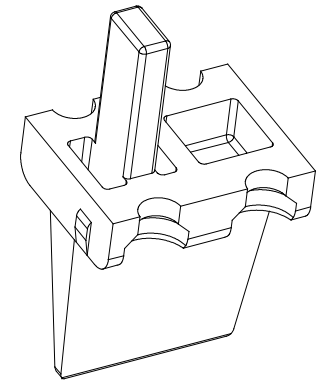
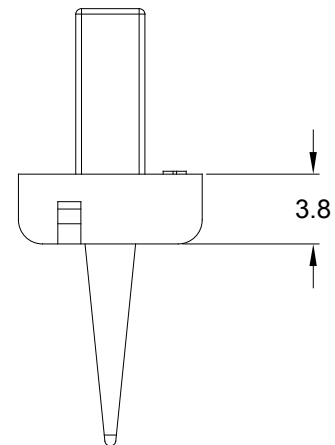
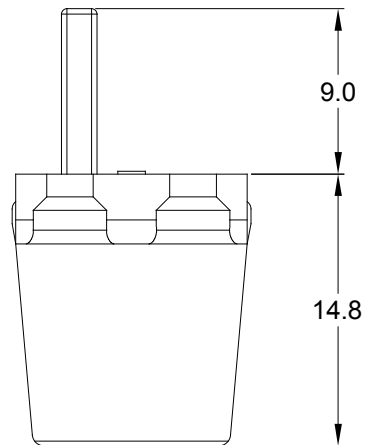
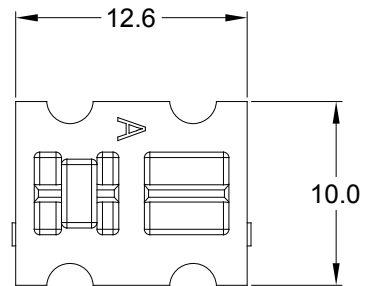


REVISIONS

REV	ECO	DESCRIPTION	DATE	BY	APPR
A1	--	RELEASE DRAWING	05/DEC/19	SULLEN	TOMMY



NOTES: UNLESS OTHERWISE SPECIFIED

1. MATERIAL: THERMOPLASTIC; COLOR: SEE SHEET 2

2. RoHS COMPLIANT

3. CAVITIES: 4

4. KEYED: SEE SHEET 2


5. USE WITH CONNECTORS ATP04-4P*
(* = MODIFICATIONS AND COLORS)

6. ALL DIMENSIONS ARE FOR REFERENCE USE ONLY.

SEE SHEET 2

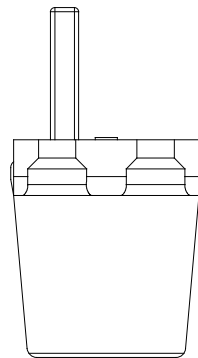
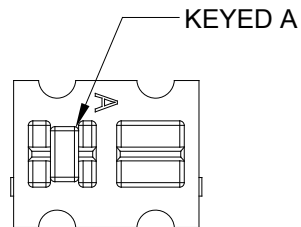
QUANTITY	PART NUMBER	DESCRIPTION	ITEM
----------	-------------	-------------	------

MATERIALS LIST

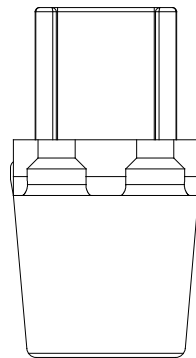
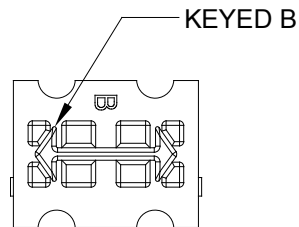
UNLESS OTHERWISE SPECIFIED 1) All dimensions are in metric(mm). 2) Tolerances are as follows: 1 PL DEC ± 0.30 2 PL DEC ± 0.15 3 PL DEC ± 0.08 3) Note reference = 		SIGNATURES DRAWN: SULLEN.ZHANG CHECKED: ORION.LI ENGINEER: APPROVAL: TOMMY.XIE	DATE 05/DEC/19 05/DEC/19 05/DEC/19	Amphenol Sine Systems - www.amphenol-sine.com 44724 Morley Drive Clinton Township, MI 48036	
MATERIAL SPECIFICATIONS:		CUSTOMER:		P-WEDGELOCK,4 POS,ATP SERIES	
PROCESS SPECIFICATIONS:		THIS DRAWING IS SUPPLIED FOR INFORMATION ONLY. DESIGN FEATURES, SPECIFICATIONS AND PERFORMANCE DATA SHOWN HEREON ARE THE PROPERTY OF THE AMPHENOL CORPORATION. NO RIGHTS OF REPRODUCTION ARE IMPLIED. ALL DIMENSIONS ARE SUBJECT TO NORMAL MANUFACTURING VARIATIONS.		SIZE A	TYPE C-
NEXT ASSY:		DWG NO: AWP-4PX		REVISION A1	
		SCALE: NONE		SHEET 1	OF 2

REVISIONS

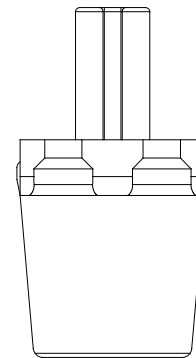
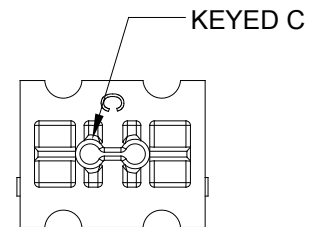
REV	ECO	DESCRIPTION	DATE	BY	APPR
A1	--	RELEASE DRAWING	05/DEC/19	SULLEN	TOMMY



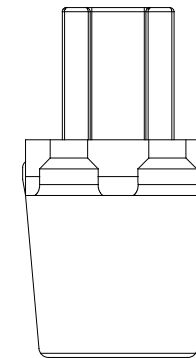
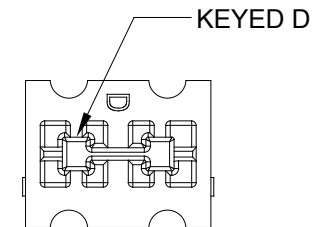
AWP-4PA
GRAY




AWP-4PB
BLACK



AWP-4PC
GREEN



AWP-4PD
BROWN

	AWP-4PX			
QUANTITY	PART NUMBER	DESCRIPTION		ITEM
MATERIALS LIST				
<div>UNLESS OTHERWISE SPECIFIED</div> <div>1) All dimensions are in metric(mm).</div> <div>2) Tolerances are as follows:</div> <div>1 PL DEC ±0.30</div> <div>2 PL DEC ±0.15</div> <div>3 PL DEC ±0.08</div> <div>3) Note reference = </div>		<div>SIGNATURES</div> <div>DRAWN: SULLEN.ZHANG</div> <div>CHECKED: ORION.LI</div> <div>ENGINEER:</div> <div>APPROVAL: TOMMY.XIE</div> <div>CUSTOMER:</div> <div>THIS DRAWING IS SUPPLIED FOR INFORMATION ONLY. DESIGN FEATURES, SPECIFICATIONS AND PERFORMANCE DATA SHOWN HEREON ARE THE PROPERTY OF THE AMPHENOL CORPORATION. NO RIGHTS OF REPRODUCTION ARE IMPLIED. ALL DIMENSIONS ARE SUBJECT TO NORMAL MANUFACTURING VARIATIONS.</div>	<div>DATE</div> <div>05/DEC/19</div> <div>05/DEC/19</div> <div></div> <div>05/DEC/19</div> <div></div> <div><div>Amphenol</div><div>Sine Systems - www.amphenol-sine.com</div><div>44724 Morley Drive</div><div>Clinton Township, MI 48036</div></div>	
MATERIAL SPECIFICATIONS:		P-WEDGELOCK,4 POS,ATP SERIES		
PROCESS SPECIFICATIONS:		SIZE	TYPE	REVISION
		A	C-	A1
NEXT ASSY:		DWG NO: AWP-4PX		
		SCALE: NONE		
		SHEET 2 OF 2		

Mouser Electronics

Authorized Distributor

Click to View Pricing, Inventory, Delivery & Lifecycle Information:

[Amphenol:](#)

[AWP-4PB](#)