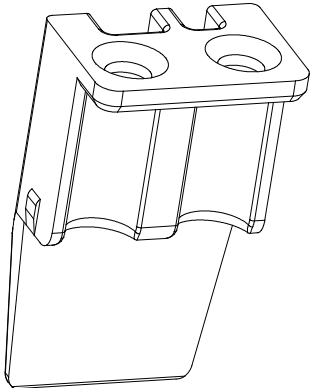
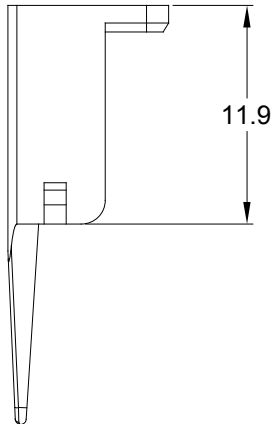
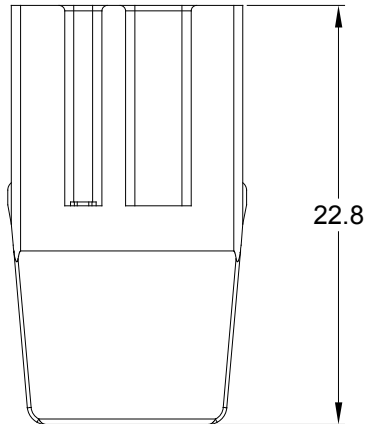
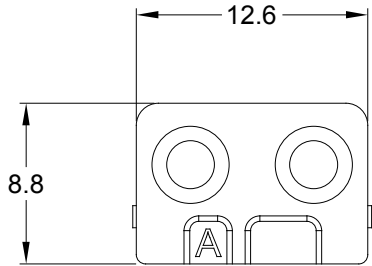


REVISIONS					
REV	ECO	DESCRIPTION	DATE	BY	APPR
A1	--	RELEASE DRAWING	05/DEC/19	SULLEN	TOMMY



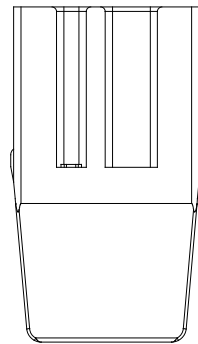
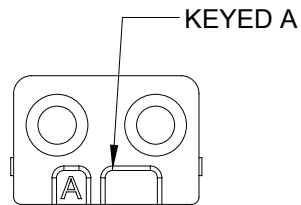
NOTES: UNLESS OTHERWISE SPECIFIED

1. MATERIAL: THERMOPLASTIC; COLOR: SEE SHEET 2
2. RoHS COMPLIANT
3. CAVITIES: 2
4. KEYED: SEE SHEET 2
5. USE WITH CONNECTORS ATP06-2S*
(* = MODIFICATIONS AND COLORS)
6. ALL DIMENSIONS ARE FOR REFERENCE USE ONLY.

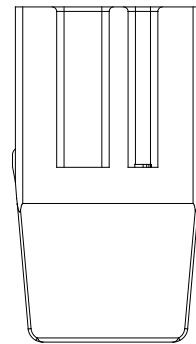
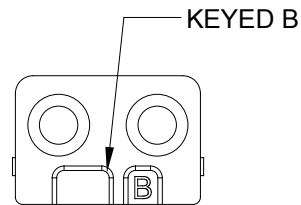
		SEE SHEET 2			
QUANTITY		PART NUMBER		DESCRIPTION	
				ITEM	
MATERIALS LIST					
<div>UNLESS OTHERWISE SPECIFIED</div> <div>1) All dimensions are in metric(mm).</div> <div>2) Tolerances are as follows:</div> <div>1 PL DEC ±0.30</div> <div>2 PL DEC ±0.15</div> <div>3 PL DEC ±0.08</div> <div>Fractions ±1/64</div> <div>Angles ±1°</div> <div>3) Note reference = <div>X</div></div>		<div>SIGNATURES</div> <div>DRAWN: SULLEN.ZHANG</div> <div>CHECKED: ORION.LI</div> <div>ENGINEER:</div> <div>APPROVAL: TOMMY.XIE</div> <div>CUSTOMER:</div> <div>DATE</div> <div>05/DEC/19</div> <div>05/DEC/19</div> <div>05/DEC/19</div>		<div>Amphenol</div> <div>Sine Systems - www.amphenol-sine.com</div> <div>44724 Morley Drive</div> <div>Clinton Township, MI 48036</div>	
MATERIAL SPECIFICATIONS:				S-WEDGELOCK,2 POS,ATP SERIES	
PROCESS SPECIFICATIONS:		THIS DRAWING IS SUPPLIED FOR INFORMATION ONLY. DESIGN FEATURES, SPECIFICATIONS AND PERFORMANCE DATA SHOWN HEREON ARE THE PROPERTY OF THE AMPHENOL CORPORATION. NO RIGHTS OF REPRODUCTION ARE IMPLIED. ALL DIMENSIONS ARE SUBJECT TO NORMAL MANUFACTURING VARIATIONS.			
NEXT ASSY:					

REVISIONS

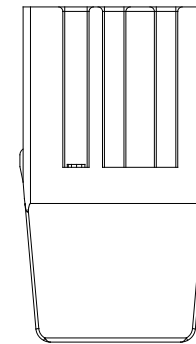
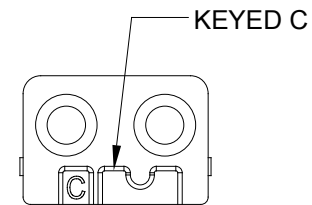
REV	ECO	DESCRIPTION	DATE	BY	APPR
A1	--	RELEASE DRAWING	05/DEC/19	SULLEN	TOMMY



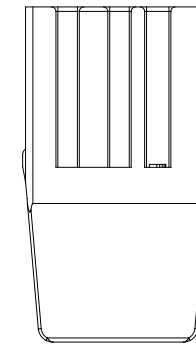
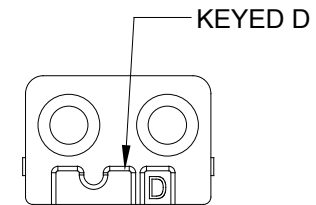
AWP-2SA
GRAY




AWP-2SB
BLACK



AWP-2SC
GREEN



AWP-2SD
BROWN

AWP-2SX			
QUANTITY	PART NUMBER	DESCRIPTION	ITEM
MATERIALS LIST			
<div>UNLESS OTHERWISE SPECIFIED</div> <div>1) All dimensions are in metric(mm).</div> <div>2) Tolerances are as follows:</div> <div>1 PL DEC ±0.30</div> <div>2 PL DEC ±0.15</div> <div>3 PL DEC ±0.08</div> <div>3) Note reference = </div>		<div>SIGNATURES</div> <div>DATE</div> <div>DRAWN: SULLEN.ZHANG</div> <div>05/DEC/19</div> <div>CHECKED: ORION.LI</div> <div>05/DEC/19</div> <div>ENGINEER:</div> <div>APPROVAL: TOMMY.XIE</div> <div>05/DEC/19</div> <div>CUSTOMER:</div> <div>THIS DRAWING IS SUPPLIED FOR INFORMATION ONLY. DESIGN FEATURES, SPECIFICATIONS AND PERFORMANCE DATA SHOWN HEREON ARE THE PROPERTY OF THE AMPHENOL CORPORATION. NO RIGHTS OF REPRODUCTION ARE IMPLIED. ALL DIMENSIONS ARE SUBJECT TO NORMAL MANUFACTURING VARIATIONS.</div>	<div>Amphenol</div> <div>Sine Systems - www.amphenol-sine.com</div> <div>44724 Morley Drive</div> <div>Clinton Township, MI 48036</div> <div>S-WEDGELOCK,2 POS,ATP SERIES</div> <div><div>SIZE</div><div>A</div><div>TYPE</div><div>C-</div><div>DWG NO:</div><div>AWP-2SX</div><div>REVISION</div><div>A1</div></div> <div><div>SCALE:</div><div>NONE</div><div>SHEET</div><div>2</div><div>OF</div><div>2</div></div>
NEXT ASS'Y:			

Mouser Electronics

Authorized Distributor

Click to View Pricing, Inventory, Delivery & Lifecycle Information:

[Amphenol:](#)

[AWP-2SD](#)