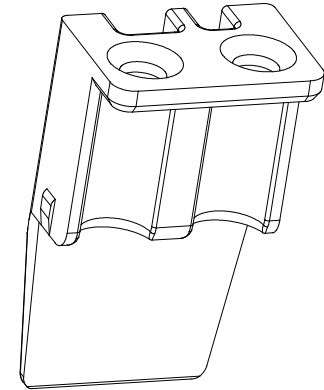
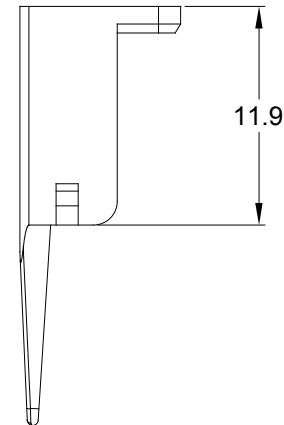
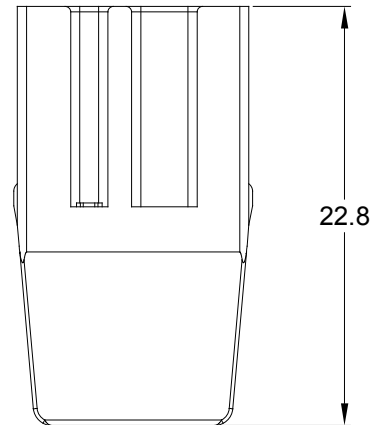
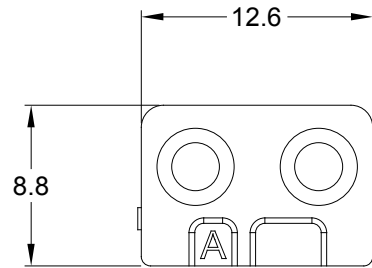


REVISIONS

REV	ECO	DESCRIPTION	DATE	BY	APPR
A1	--	RELEASE DRAWING	05/DEC/19	SULLEN	TOMMY



NOTES: UNLESS OTHERWISE SPECIFIED

1. MATERIAL: THERMOPLASTIC; COLOR: SEE SHEET 2

2. RoHS COMPLIANT

3. CAVITIES: 2

4. KEYED: SEE SHEET 2

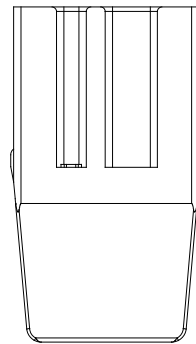
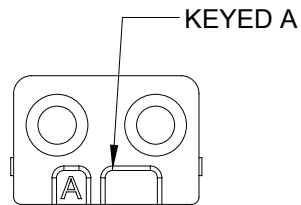
5. USE WITH CONNECTORS ATP06-2S*
(* = MODIFICATIONS AND COLORS)

6. ALL DIMENSIONS ARE FOR REFERENCE USE ONLY.

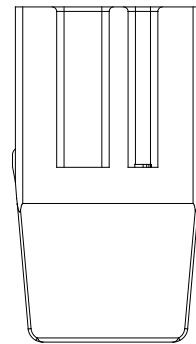
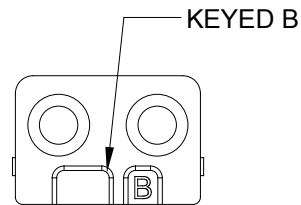
SEE SHEET 2				
QUANTITY	PART NUMBER	DESCRIPTION		ITEM
MATERIALS LIST				
<div>UNLESS OTHERWISE SPECIFIED</div> <div>1) All dimensions are in metric(mm).</div> <div>2) Tolerances are as follows:</div> <div>1 PL DEC ±0.30</div> <div>2 PL DEC ±0.15</div> <div>3 PL DEC ±0.08</div> <div>3) Note reference = <div><div>X</div></div></div>		<div>SIGNATURES</div> <div>DATE</div> <div>DRAWN: SULLEN.ZHANG</div> <div>05/DEC/19</div> <div>CHECKED: ORION.LI</div> <div>05/DEC/19</div> <div>ENGINEER:</div> <div>APPROVAL: TOMMY.XIE</div> <div>05/DEC/19</div> <div>CUSTOMER:</div> <div>THIS DRAWING IS SUPPLIED FOR INFORMATION ONLY. DESIGN FEATURES, SPECIFICATIONS AND PERFORMANCE DATA SHOWN HEREON ARE THE PROPERTY OF THE AMPHENOL CORPORATION. NO RIGHTS OF REPRODUCTION ARE IMPLIED. ALL DIMENSIONS ARE SUBJECT TO NORMAL MANUFACTURING VARIATIONS.</div>	<div>Amphenol</div> <div>Sine Systems - www.amphenol-sine.com</div> <div>44724 Morley Drive</div> <div>Clinton Township, MI 48036</div> <div>S-WEDGELOCK,2 POS,ATP SERIES</div> <div><div>SIZE</div><div>A</div><div>TYPE</div><div>C-</div><div>DWG NO:</div><div>AWP-2SX</div><div>REVISION</div><div>A1</div></div> <div><div>SCALE:</div><div>NONE</div><div>SHEET</div><div>1</div><div>OF</div><div>2</div></div>	
NEXT ASSY:				

REVISIONS

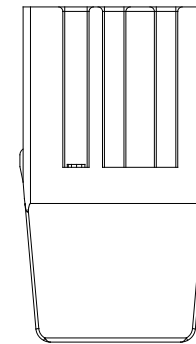
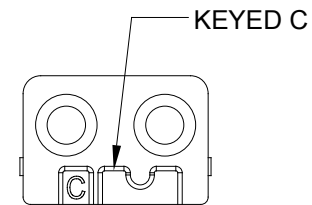
REV	ECO	DESCRIPTION	DATE	BY	APPR
A1	--	RELEASE DRAWING	05/DEC/19	SULLEN	TOMMY



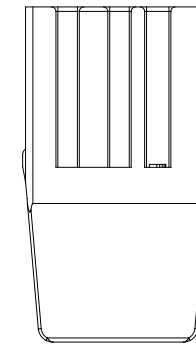
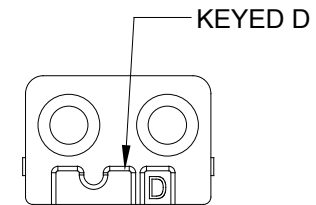
AWP-2SA
GRAY




AWP-2SB
BLACK



AWP-2SC
GREEN



AWP-2SD
BROWN

		AWP-2SX							
QUANTITY	PART NUMBER		DESCRIPTION						
ITEM									
MATERIALS LIST									
<div>UNLESS OTHERWISE SPECIFIED</div> <div>1) All dimensions are in metric(mm).</div> <div>2) Tolerances are as follows:</div> <div>1 PL DEC ±0.30</div> <div>2 PL DEC ±0.15</div> <div>3 PL DEC ±0.08</div> <div>3) Note reference = </div>		<div>SIGNATURES</div> <div>DRAWN: SULLEN.ZHANG</div> <div>CHECKED: ORION.LI</div> <div>ENGINEER:</div> <div>APPROVAL: TOMMY.XIE</div> <div>CUSTOMER:</div>		<div>DATE</div> <div>05/DEC/19</div> <div>05/DEC/19</div> <div></div> <div>05/DEC/19</div>		<div>Amphenol</div> <div>Sine Systems - www.amphenol-sine.com</div> <div>44724 Morley Drive</div> <div>Clinton Township, MI 48036</div>			
MATERIAL SPECIFICATIONS:		S-WEDGELOCK,2 POS,ATP SERIES							
PROCESS SPECIFICATIONS:		THIS DRAWING IS SUPPLIED FOR INFORMATION ONLY. DESIGN FEATURES, SPECIFICATIONS AND PERFORMANCE DATA SHOWN HEREON ARE THE PROPERTY OF THE AMPHENOL CORPORATION. NO RIGHTS OF REPRODUCTION ARE IMPLIED. ALL DIMENSIONS ARE SUBJECT TO NORMAL MANUFACTURING VARIATIONS.							
NEXT ASSY:		SIZE		TYPE		DWG NO:		REVISION	
		A		C-		AWP-2SX		A1	
		SCALE:		NONE		SHEET 2 OF 2			

Mouser Electronics

Authorized Distributor

Click to View Pricing, Inventory, Delivery & Lifecycle Information:

[Amphenol:](#)

[AWP-2SC](#)