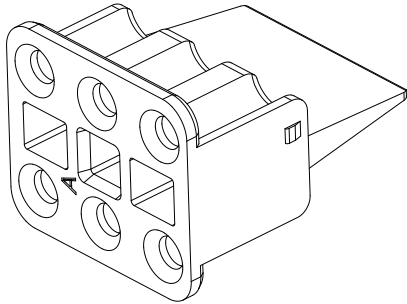
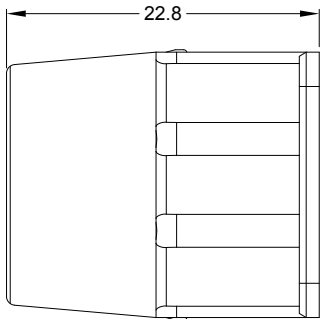
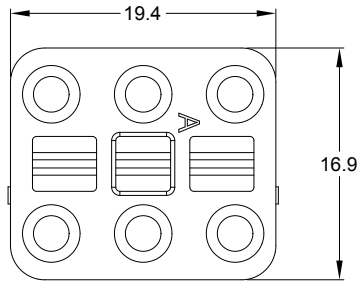
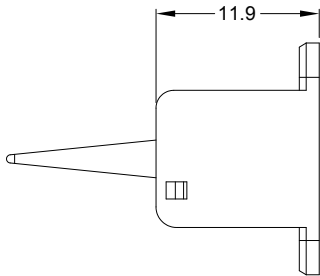


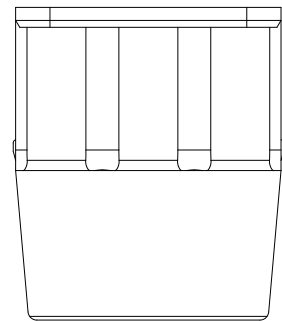
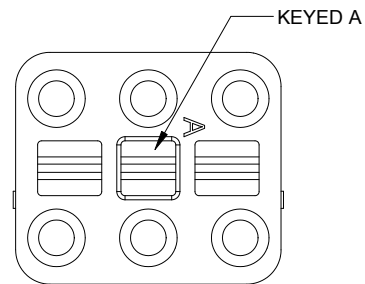
REVISIONS					
REV	ECO	DESCRIPTION	DATE	BY	APPR
A1	--	RELEASE NEW DRAWING	18/MAR/20	PETER	TOMMY



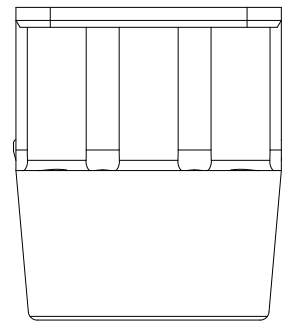
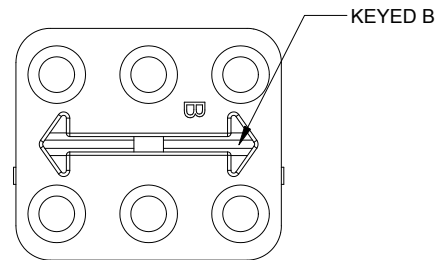
- NOTES: UNLESS OTHERWISE SPECIFIED
1. MATERIAL: THERMOPLASTIC; COLOR: SEE SHEET 2
  2. RoHS COMPLIANT
  3. CAVITIES: 6
  - 4 KEYED: SEE SHEET 2
  5. USE WITH CONNECTORS ATP06-6S\*  
( \* = MODIFICATIONS AND COLORS )
  6. ALL DIMENSIONS ARE FOR REFERENCE USE ONLY.

		AWP-6SX					
QUANTITY	PART NUMBER		DESCRIPTION			ITEM	
MATERIALS LIST							
<div>UNLESS OTHERWISE SPECIFIED</div> <div>1) All dimensions are in metric(mm).</div> <div>2) Tolerances are as follows:</div> <div>1 PL DEC ±0.30</div> <div>2 PL DEC ±0.15</div> <div>3 PL DEC ±0.08</div> <div>Fractions ±1/64</div> <div>Angles ±1°</div> <div>3) Note reference = <div><div>X</div></div></div>		<div>SIGNATURES</div> <div>DRAWN: PETER.YANG</div> <div>CHECKED: ORION.LI</div> <div>ENGINEER:</div> <div>APPROVAL: TOMMY.XIE</div> <div>CUSTOMER:</div>		<div>DATE</div> <div>18/MAR/20</div> <div>19/MAR/20</div> <div>20/MAR/20</div>		<div>Amphenol</div> <div>Sine Systems - www.amphenol-sine.com</div> <div>44724 Morley Drive</div> <div>Clinton Township, MI 48036</div>	
MATERIAL SPECIFICATIONS:		S-WEDGELOCK, 6 POSITION, ATP SERIES					
PROCESS SPECIFICATIONS:		<div>THIS DRAWING IS SUPPLIED FOR INFORMATION ONLY. DESIGN FEATURES, SPECIFICATIONS AND PERFORMANCE DATA SHOWN HEREON ARE THE PROPERTY OF THE AMPHENOL CORPORATION. NO RIGHTS OF REPRODUCTION ARE IMPLIED. ALL DIMENSIONS ARE SUBJECT TO NORMAL MANUFACTURING VARIATIONS.</div>					
NEXT ASS'Y:		SIZE		TYPE	DWG NO:	REVISION	
		A		C-	AWP-6SX	A1	
		SCALE: NONE			SHEET 1 OF 2	2	


REVISIONS					
REV	ECO	DESCRIPTION	DATE	BY	APPR
A1	--	RELEASE NEW DRAWING	18/MAR/20	PETER	TOMMY



AWP-6SA  
GRAY



AWP-6SB  
BLACK

	AWP-6SX					
QUANTITY	PART NUMBER		DESCRIPTION			ITEM
MATERIALS LIST						
<b>UNLESS OTHERWISE SPECIFIED</b> 1) All dimensions are in metric(mm). 2) Tolerances are as follows: 1 PL DEC $\pm 0.30$ 2 PL DEC $\pm 0.15$ 3 PL DEC $\pm 0.08$ 3) Note reference = 		<b>SIGNATURES</b> DRAWN: PETER.YANG CHECKED: ORION.LI ENGINEER: APPROVAL: TOMMY.XIE CUSTOMER:  THIS DRAWING IS SUPPLIED FOR INFORMATION ONLY. DESIGN FEATURES, SPECIFICATIONS AND PERFORMANCE DATA SHOWN HEREON ARE THE PROPERTY OF THE AMPHENOL CORPORATION. NO RIGHTS OF REPRODUCTION ARE IMPLIED. ALL DIMENSIONS ARE SUBJECT TO NORMAL MANUFACTURING VARIATIONS.		<b>DATE</b> 18/MAR/20 19/MAR/20  20/MAR/20		
MATERIAL SPECIFICATIONS:		<div>Amphenol</div> <div>Sine Systems - <a href="http://www.amphenol-sine.com">www.amphenol-sine.com</a> 44724 Morley Drive Clinton Township, MI 48036</div>				
PROCESS SPECIFICATIONS:		S-WEDGELOCK, 6 POSITION, ATP SERIES				
NEXT ASS'Y:		SIZE A	TYPE C-	DWG NO: AWP-6SX	REVISION A1	
		SCALE: NONE		SHEET 2 OF 2	2	

# Mouser Electronics

Authorized Distributor

Click to View Pricing, Inventory, Delivery & Lifecycle Information:

[Amphenol:](#)

[AWP-6SB](#)