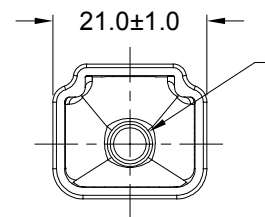
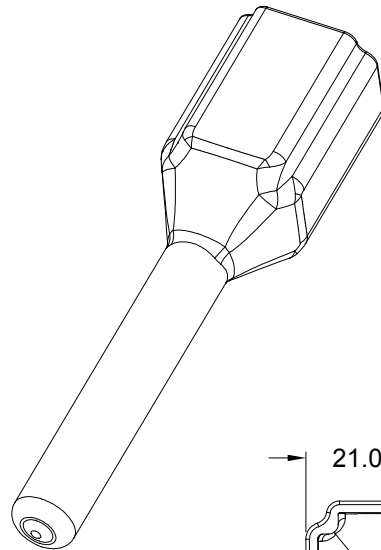
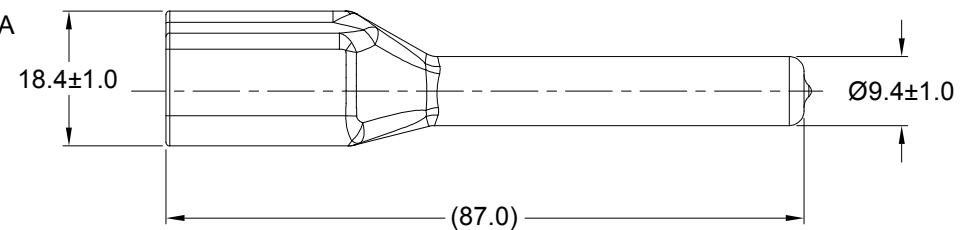


| REVISIONS |     |                |         |       |       |
|-----------|-----|----------------|---------|-------|-------|
| REV       | ECO | DESCRIPTION    | DATE    | BY    | APPR  |
| A1        | -   | RELEASE NUMBER | 13MAR20 | BROOK | TOMMY |




Ø6.2±1.0  
CABLE JACKET AREA



| PART NUMBER CHART |             |
|-------------------|-------------|
| COLOR             | PART NUMBER |
| GREY              | ATP2P-BT    |
| BLACK             | ATP2P-BT-BK |
| YELLOW            | ATP2P-BT-YW |

NOTES: UNLESS OTHERWISE SPECIFIED

- THIS PART IS USED ON ATP04-2P RECEPTACLE  
ANY MODIFICATION DOES NOT INCLUDE AN END CAP.
- TEMPERATURE RATING : -29°C TO +100°C [-20°F TO +212°F]
- ALL DIMENSIONS ARE FOR REFERENCE USE ONLY.

|   |                |  |  |         |              |          |         |          |   |    |             |    |             |  |              |  |
|---|----------------|--|--|---------|--------------|----------|---------|----------|---|----|-------------|----|-------------|--|--------------|--|
| SEE PART NUMBER CHART   |                | REF:DTP2P-BT, DTP2P-BT-BK, DTP2P-BT-YW   |  |         |              |          |         |          |   |    |             |    |             |  |              |  |
| PART NUMBER   |                | DESCRIPTION  |  | ITEM    |              |          |         |          |   |    |             |    |             |  |              |  |
| QUANTITY  | MATERIALS LIST |  |  |         |              |          |         |          |   |    |             |    |             |  |              |  |
| UNLESS OTHERWISE SPECIFIED  |                | <div>Amphenol</div> <div>Sine Systems - www.amphenol-sine.com<br/>44724 Morley Drive<br/>Clinton Township, MI 48036</div> <div>BOOT, ATP,2 WAY,RECEPTACLE</div> <table><tr><td>SIZE</td><td>TYPE</td><td>DWG NO:</td><td>REVISION</td></tr><tr><td>A</td><td>C-</td><td>ATP2P-BT-XX</td><td>A1</td></tr><tr><td colspan="2">SCALE: NONE</td><td colspan="2">SHEET 1 OF 1</td></tr></table> |  |         | SIZE         | TYPE     | DWG NO: | REVISION | A | C- | ATP2P-BT-XX | A1 | SCALE: NONE |  | SHEET 1 OF 1 |  |
| SIZE  | TYPE           |  |  |         | DWG NO:      | REVISION |         |          |   |    |             |    |             |  |              |  |
| A   | C-             |  |  |         | ATP2P-BT-XX  | A1       |         |          |   |    |             |    |             |  |              |  |
| SCALE: NONE   |                |  |  |         | SHEET 1 OF 1 |          |         |          |   |    |             |    |             |  |              |  |
| 1) All dimensions are in metric(mm).<br>2) Tolerances are as follows:<br>1 PL DEC ±0.30<br>2 PL DEC ±0.15<br>3 PL DEC ±0.08 |                |  |  |         | SIGNATURES   |          | DATE    |          |   |    |             |    |             |  |              |  |
| 3) Note reference =                    |                | DRAWN: BROOK.DING  |  | 13MAR20 |              |          |         |          |   |    |             |    |             |  |              |  |
| MATERIAL SPECIFICATIONS:  |                | CHECKED: ORION.LI  |  | 16MAR20 |              |          |         |          |   |    |             |    |             |  |              |  |
| PVC   |                | ENGINEER:  |  |         |              |          |         |          |   |    |             |    |             |  |              |  |
| PROCESS SPECIFICATIONS:   |                | APPROVAL: TOMMY.XIE  |  | 18MAR20 |              |          |         |          |   |    |             |    |             |  |              |  |
| NEXT ASSY:  |                | CUSTOMER:  |  |         |              |          |         |          |   |    |             |    |             |  |              |  |
|   |                | THIS DRAWING IS SUPPLIED FOR INFORMATION ONLY. DESIGN FEATURES, SPECIFICATIONS AND PERFORMANCE DATA SHOWN HEREON ARE THE PROPERTY OF THE AMPHENOL CORPORATION. NO RIGHTS OF REPRODUCTION ARE IMPLIED. ALL DIMENSIONS ARE SUBJECT TO NORMAL MANUFACTURING VARIATIONS.   |  |         |              |          |         |          |   |    |             |    |             |  |              |  |

# Mouser Electronics

Authorized Distributor

Click to View Pricing, Inventory, Delivery & Lifecycle Information:

[Amphenol:](#)

[ATP2P-BT-YW](#)