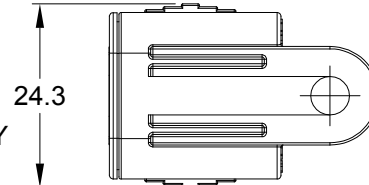
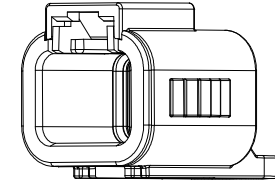
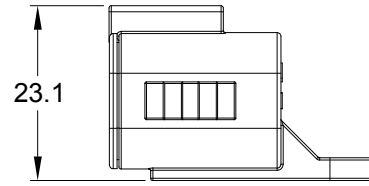
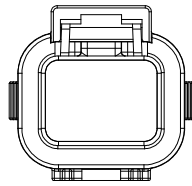
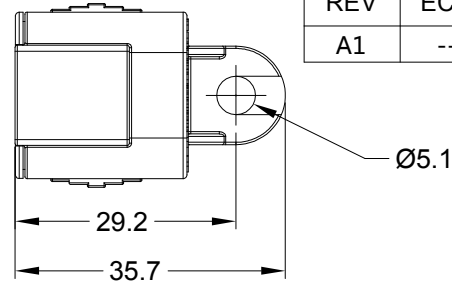


REVISIONS					
REV	ECO	DESCRIPTION	DATE	BY	APPR
A1	--	RELEASE NEW PRODUCT	08/OCT/20	LOUIE	TOMMY



NOTES: UNLESS OTHERWISE SPECIFIED

1. MATERIAL: THERMOPLASTIC, COLOR:GREY


2. RoHS COMPLIANT

3. MOISTURE RESISTANCE:
IP68 (1M OF WATER FOR A PERIOD OF 24 HOURS , MATED
CONDITION)
IP69K (MATED CONDITION)

4. TEMPERATURE RANGE: -55°C~125°C

5. USE WITH CONNECTORS ATP06-2S*
(* = MODIFICATIONS AND/OR COLORS)

6. ALL DIMENSIONS ARE FOR REFERENCE USE ONLY.

	ATP06-2S-CAP			
	PART NUMBER		DESCRIPTION	ITEM
QUANTITY	MATERIALS LIST			
UNLESS OTHERWISE SPECIFIED 1) All dimensions are in metric(mm). 2) Tolerances are as follows: 1 PL DEC ±0.30 2 PL DEC ±0.15 3 PL DEC ±0.08 3) Note reference = 		SIGNATURES DRAWN: LOUIE.YIN CHECKED: ORION.LI ENGINEER: APPROVAL: TOMMY.XIE CUSTOMER: THIS DRAWING IS SUPPLIED FOR INFORMATION ONLY. DESIGN FEATURES, SPECIFICATIONS AND PERFORMANCE DATA SHOWN HEREON ARE THE PROPERTY OF THE AMPHENOL CORPORATION. NO RIGHTS OF REPRODUCTION ARE IMPLIED. ALL DIMENSIONS ARE SUBJECT TO NORMAL MANUFACTURING VARIATIONS.	DATE 08/OCT/20 09/OCT/20 12/OCT/20	<div>Amphenol</div> <div>Sine Systems - www.amphenol-sine.com 44724 Morley Drive Clinton Township, MI 48036</div> <div>2 POS,DUST CAP FOR PLUG, ATP SERIES</div>
MATERIAL SPECIFICATIONS:		<div><div>SIZE A</div><div>TYPE C-</div><div>DWG NO: ATP06-2S-CAP</div><div>REVISION A1</div></div>		
PROCESS SPECIFICATIONS:				
NEXT ASS'Y:				
		SCALE: NONE		SHEET 1 OF 1

Mouser Electronics

Authorized Distributor

Click to View Pricing, Inventory, Delivery & Lifecycle Information:

[Amphenol:](#)

[ATP06-2S-CAP](#)